



AIM Control

The Viet-Nhan Agriculture - Industry - Marine Control Inspection Group

45, Str. 03, Ward 04, District 03, Ho Chi Minh City, Vietnam
Tel. (848) 3832 - 7204 – (849) 03615612, Fax: (848) 3832 - 8393
aimcontrol@vnn.vn, aimcontrol@media.net.vn, www.aimcontrol.service.to

INSPECTION & SURVEY

INSPECTION

- Inspection of marine field, offshore
- Inspection of industrial product, consumer goods;
- Inspection of agriculture products, foodstuff;
- Inspection of goods prior to shipment and at destination;
- Verification and certification of quality standards and goods quantity control;
at all of the ports on the world



SURVEY

- Testing, Analysis & laboratory
- Technical Consultancy
- Valuation and tariff code classification of any kind of tradable product;
- Business process audits to verify compliance with trade regulations;
- Transit monitoring & cargo tracking
- Classification services



DIVER & UNDERWATER WORK

- Diving & monitor by camera
- CCTV can be connected from underwater to shore

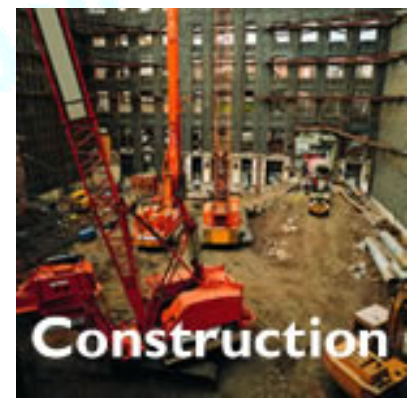


BRIEF INTRODUCTION

- INCEPTION : 1993
- GROUP : 21 INDEPENDENT PRIVATE LIMITED FIRMS
- OWNERSHIP : AGRICULTURE – INDUSTRY – MARINE INSPECTION GROUP.
- CORE BUSINESS : SURVEY, INSPECTION & DIVING, UNDERWATER WORKS
- STAFF STRENGTH : 200 PEOPLE
- HEAD OFFICE : HO CHI MINH CITY, VIETNAM
- REGIONAL PRESENCE: IN ALL WORLDWIDE MAJOR CITIES
- MEMBERSHIPS : IFIA, GAFTA, FOSFA, ICA, FIATA, IATA, PIFFA, ACCAP
- LICENSES : GOVERNMENT & ISO 9001:2000, 14000, SA 8000, HACCP, TQM
- MANAGEMENT TEAM : 25 POST PhD & GRADUATES / 05 CHARTERED ACCOUNTANTS

Our inspection, survey services are on products

We supply inspection, survey services & underwater works all over Vietnam & Worldwide:



Our group is independent companies but not limited to unite:



Global Maritime Group



Control Union



BASE SPA (Italia)



Atlantic Marine Survey Ltd. CARGO & MARINE SURVEYORS PETROLEUM INSPECTORS ANALYTICAL CHEMIST



PT. MULTI SURINDO



To be continued to unite new members

MESSAGE FROM THE MANAGEMENT

AIM is **A**griculture – **I**ndustry – **M**arine Control Inspection Group, which one of the world's leading trade inspection, trade security and certification companies, operating in close to 100 countries.

Established in Vietnam in 1993, the company was born out of an entrepreneurial spirit, with the founder of AIM responding to a need to develop professional inspection services in the Far East.

It is this sense of entrepreneurialism and innovation, plus a continuing first-hand understanding of developing economies, which has enabled AIM to become the leading global trade facilitation and trade security solution providers we are today

Our key strength is the ability to a complete range of inspection, quality goods control and consulting service to trade and agriculture, industry & marine fields as well as governmental buying organizations., and we treat each client, whether governmental or commercial, as a distinct entity with unique requirements.

We operate with the understanding that 'the client's fate is our fate' and every service we provide is conducted with a meticulous attention to detail.

Pursuant to the mottos:

Precise - unprejudiced – prompt – professional - progressive & world-wide

With best regards,

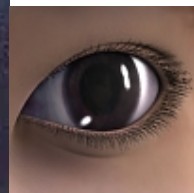
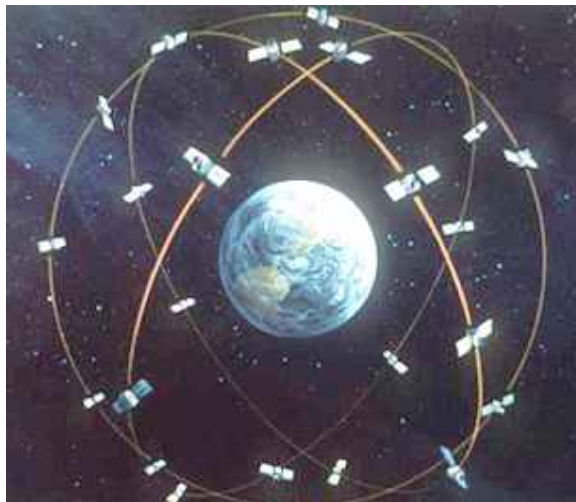


Dr Capt. Nguyen Te Nhan/ G. Director

INSPECTION & SURVEY SERVICES

- ➔ Machinery and equipment inspection (page 6)
- ➔ Marine & offshore survey, inspection (page 7, 8)
- ➔ Laboratory testing, analysis services (page 9)
- ➔ Agriculture products & foodstuff inspection (page 10)
- ➔ Container survey and containerized cargo survey, inspection (page 11)
- ➔ Consumer goods inspection (page 12)
- ➔ Crude oil and petroleum products inspection (page 13)
- ➔ Forestry and native products inspection (page 14)
- ➔ Mineral and chemical products inspection (page 15)
- ➔ Art-articles and handicraft inspection (page 16)
- ➔ Fumigation service (page 17)
- ➔ Assets valuation services (page 18)
- ➔ Inspection services serve administrative operation of the state and other fields (page 19)
- ➔ Diving, CTTV, underwater works (page 20)
- ➔ Form of inspection and survey order (page 21)

Our comprehensive range of inspection service solutions to governments and private commerce but not limited.



➔ MACHINERY AND EQUIPMENT INSPECTION

One of AIM Control's strong points is inspection of production line and machinery and equipment. With fully qualified and experienced engineers, AIM Control has been providing a range of inspection and related services applicable to machinery, equipment, production line and investment project with high quality services. We have performed the inspection of a great number of high valued production lines, machinery and equipment for organizations, domestic enterprises, enterprises with foreign invested capital and 100% foreign capital.

Products for inspection: Production lines, machinery and equipment

- Pre-shipment inspection
- Quantity & Quality
- Condition & Packing
- Stowage & Loading supervision
- Price verification...



➔ MARINE SURVEY, INSPECTION

Products for inspection: Means of transport; cargoes on board; Shore tanks

- Supervision before and during loading and discharging
- Tallying services
- Draft survey & measurement
- Quantity inspection of liquid cargo
- Damaged cargo survey, damage and repair survey on ship hull, machinery and cargo gears
- Cleanliness of hold, ship's hold suitability survey
- Collision survey
- Temperature determination
- On/off-hire survey, bunker survey
- Full on- hire / off- hire survey
- Hold's capacity determination
- Sealing and unsealing
- Loading stowage survey, towing, stuffed to/ stuffed off & intact seal container survey
- Survey & approval of towage & stowage, lashing, seaworthiness condition
- Gas-free survey, Tank coatings, corrosion survey, inspection
- Dry-docking survey & Repair & new ship building superintendents,
- Pre-purchase ship condition survey, P&I ship condition survey, ship register survey



The photographs taken by AIM Control's surveyors in survey fields

➔ **MARINE SURVEY, INSPECTION**

Services available but not limited:



The photographs taken by AIM Control's surveyors in survey fields

➔ LABORATORY SERVICES

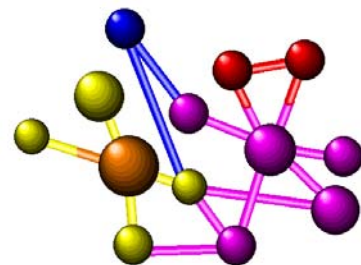
The laboratories are fully equipped to offer a complete range of agricultural analytical, inspection and certification services for raw & refined sugar, oils & fats, cereals, fertilizers and all other soft commodities. The company has established a global network of dedicated agricultural laboratories to meet your analytical requirements.

Services available:

- Sampling and sample preparation
- Sensory evaluation tests
- Visual assessment, determination of name of goods and use
- Physic-chemical tests, microbiological tests
- Testing and evaluating the conformity of product to requirements provided by clients
- Testing toxin content, testing/ analysis report
- Advisory and other specific services on request

Products for testing & analysis:

- Agricultural products and foodstuff
- Mineral products
- Petroleum and natural gas products
- Medical products
- Chemical and other products



➔ AGRICULTURE PRODUCTS AND FOODSTUFFS INSPECTION, SURVEY

Our group is company members of the following organizations: Grain and Feed Trade Association (GAFTA), Federation of Oil Seeds and Fats Association (FOSFA), Malaysian Palm Oil Board (MPOB), The Sugar Association of London (SAL), Department of Environment, Food and Rural Affairs (DEFRA), International Federation of Inspection Agencies (IFIA), Servicio Nacional de Sanidad y Calidad Agroalimentaria (SENASA) & International Fertiliser Industry Association (IFA)

Services available:

- ❑ Incoming inspection
- ❑ Inspection during production (quality and quantity, packing and marking)
- ❑ Supervision during loading and discharging
- ❑ Sampling for laboratory analysis, tallying services
- ❑ Testing: organoleptic, visual physic, chemical
- ❑ Attendance at stuffing and stuffing off of containers
- ❑ Ship hold inspection before loading, draft survey, sealing
- ❑ Advisory and other specific services on request

Products for inspection:

- ❑ Rice, maize, tapioca, pepper; bean: coffee bean, soya-bean, green bean
- ❑ Oil seeds: sesame, groundnut, cashew nut, tobacco, alcohol, spirits, beer, soft drinks
- ❑ Fresh fruits and vegetables, spices: whole and powdered, canned products
- ❑ Dried products: fruits, spices, animal and sea products
- ❑ Salted products: fruits, meat and sea products
- ❑ Sugar, candies, cakes, milk, dairy products, salt, animal feeds
- ❑ Fresh flowers, ornamental plant and fish, Livestock and poultry
- ❑ Feather and downs, preserved hides and skins, Jute fibber, jute bag



➔ INSPECTION TO CONTAINER AND CARGO SERVICES

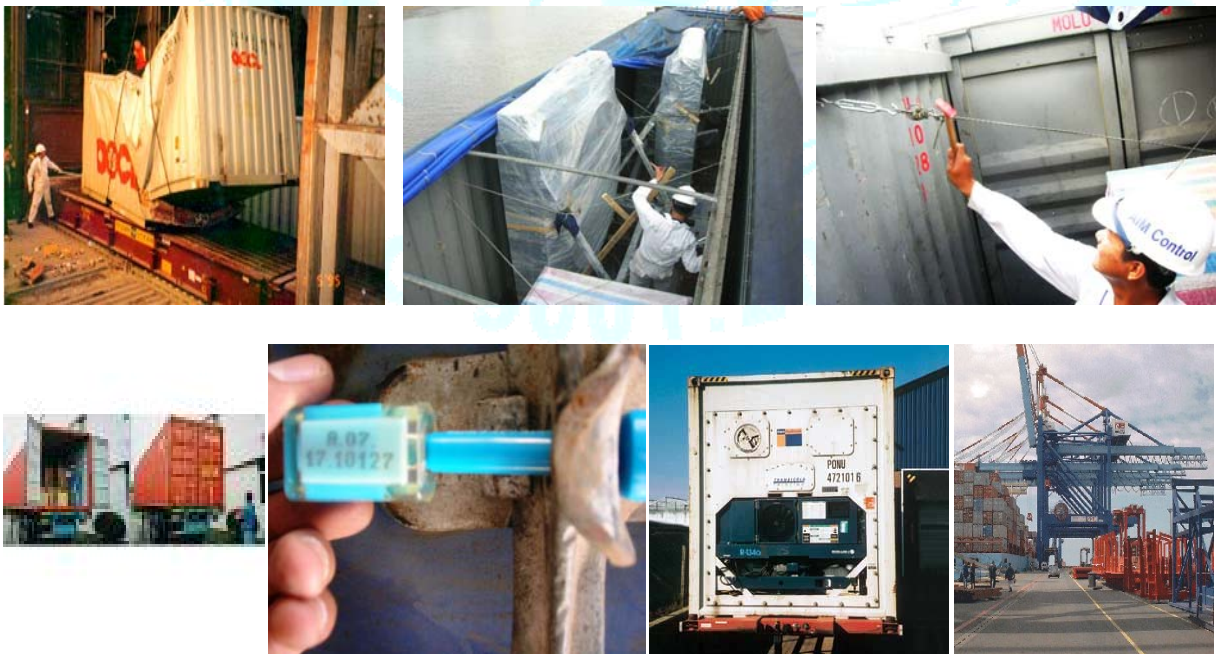
Our surveyors have always improved their knowledge (a team of surveyors has been certified by IICL), updated new technology and accumulated experience to supply clients with the highest quality services.

Inspection to container:

- Inspection of condition on: pre-post repair; on hire / off hire; interchange; damage.
- Suitability to load frozen cargo, Inspection of stowing capability of container
- Inspection of cleanliness according to carriers or loading parties standards/ criteria.
- Pre-Trip-inspection (PTI)

Inspection of containerized cargoes:

- Quantity, volume, condition
- Damage, checking temperature and condition of frozen cargo before & after stuffing
- Inspection of fastening, dunnaging and stowing condition of containerized cargoes
- Inspection of liquid weight in container tanks
- Fumigation of agricultural products stowed in containers.



The photographs taken by our surveyors in survey fields

➔ INSPECTION TO CONSUMER GOODS

With experienced, professional and skilled surveyors, we are capable of inspection services about kinds of consumer goods for import & export.

Services available:

- Inspection to incoming, during production
- Pre-shipment inspection, inspection of quality and quantity
- Packing and marking
- Supervision during loading, discharging & tallying services
- Attendance at stuffing and stuffing-off of containers
- Sampling for laboratory analysis, sealing
- Advisory and other specific services on request

Product for inspection:

- Knitwear, textiles and garments, footwear, travel goods
- Sports goods, toys, leather and imitation leather products
- Rubber products, small household appliances
- Furnishings, small furniture, electronic and electric appliances
- Wood products, raw materials for manufacturing consumer goods
- Miscellaneous gadgets



The photographs taken by our surveyors in survey fields

➔ INSPECTION TO CRUDE OIL & PETROLEUM PRODUCTS

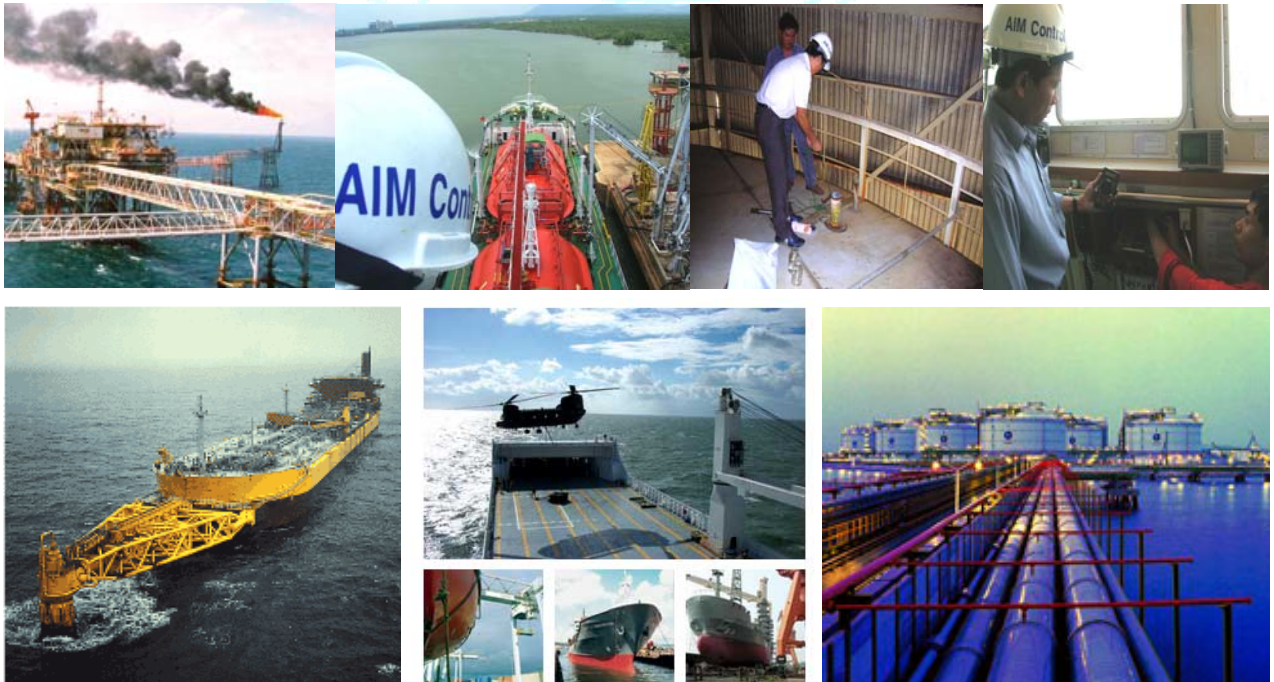
The inspection is doing at oil fields such as Bach Ho, Dai Hung, Ruby, Rang Dong, the newly Su Tu Den in Vietnam and other oil fields.

Services available:

- 📌 Supervision of loading and unloading
- 📌 Measurement and calculation of quantity contained in ship-tanks
- 📌 Measurement and calculation of quantity contained in shore-tanks
- 📌 Bunker survey
- 📌 Visual inspection of ship-tanks, pumps and pipelines for cleanliness
- 📌 Ship-tank suitability survey
- 📌 Sampling of cargo according to instructions
- 📌 Analyzing and testing
- 📌 Loss, damage and contamination survey
- 📌 Calibration for shore-tanks

Products for inspection:

- 📌 Crude oil, gasoline, air plane fuel
- 📌 Diesel oil, fuel oil , liquefied petroleum gas, raw gas, asphalt
- 📌 Liquid cargo, chemicals



The photographs taken by our surveyors in survey fields

➔ INSPECTION TO FORESTRY AND NATIVE PRODUCTS

Services available:

- 📌 Pre-shipment inspection
 - Inspection of quality and quantity
 - Packing and marking
 - Stuffing goods into container
- 📌 Supervision during loading and discharging
- 📌 Measurement
- 📌 Tallying services
- 📌 Attendance at stuffing and destuffing of containers
- 📌 Sealing
- 📌 Advisory and other specific services on request

Products for inspection:

- 📌 Log and sawn timber, flooring, wooden chip
- 📌 Raw materials for making handicraft: bamboo, rattan, cane, leaves
- 📌 Medicinal herbs, essential oils
- 📌 Forest - sourced specialties: cassia, aniseed star, aloe, raw lacquer, gum, resins
- 📌 Rubber and rubber latex



➔ INSPECTION TO MINERAL AND CHEMICAL PRODUCTS

Services available:

- ❑ Pre-shipment inspection of quality and weight
- ❑ Draft survey
- ❑ Tallying services
- ❑ Inspection during loading and discharging
- ❑ Attendance at stuffing and stuffing off of containers
- ❑ Sampling for laboratory analysis
- ❑ Testing
- ❑ Advisory and other specific services on request

Products for inspection:

- ❑ Coal
- ❑ Metals: tin, aluminum, zinc and lead ingots
- ❑ Alloys: roll steel, steel plate, steel bar, pig iron
- ❑ Ores and concentrates: pyrite, barite, chromites, wolfram, ilmenite, zircon
- ❑ Silica s and chemicals, fertilizers
- ❑ Pharmaceutical products
- ❑ Methanol, VAM, BA, Dow chemical, LPG gas . . .
- ❑ Construction materials: marble, cement, gypsum, clinker, glass...
- ❑ Gemstone : Gold, silver, diamond, ruby, sapphire, collecting samples



➔ INSPECTION TO ART-ARTICLES AND HANDICRAFT

We have successfully accomplished inspection of big lots of export cargoes and gained credits from its home and overseas clients

Services available:

- 📌 Incoming inspection
- 📌 Inspection during production
- 📌 Pre-shipment inspection: quality and quantity control; packing & marking
- 📌 Attendance at stuffing and stuffing off of containers
- 📌 Sealing, tallying services
- 📌 Supervision during loading and discharging
- 📌 Fumigation services
- 📌 Advisory and other specific services on request

Products for inspection:

- 📌 Hand-made embroideries, lace
- 📌 Lacquer ware, wood carvings, stone carvings and other decorative articles
- 📌 Silverware, bone and ivory items, ceramic
- 📌 Products made of rattan, bamboo, cane, palm-leaf, coir, maize, rush (basketry, curtains and blinds, mats and matting, carpets, boxes, bags, hats, fishing rods, walking sticks...)



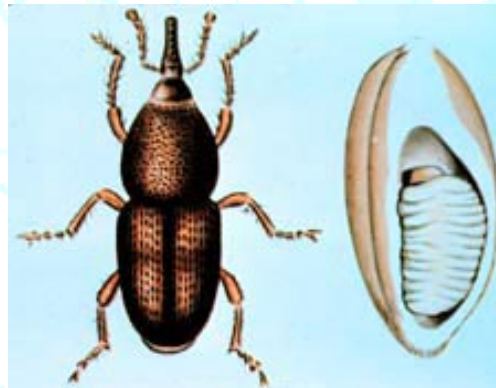
➔ FUMIGATION SERVICE

Services available:

- 📌 Fumigation at ship holds and lighters
- 📌 Fumigation in containers
- 📌 Fumigation at warehouses
- 📌 Other fumigation services on request

Products for fumigation:

- 📌 Means of transportation: Ship, lighter, container...
- 📌 Agricultural products: rice, groundnut, sesame seeds, soya bean, coffee bean and others.
- 📌 Wood products
- 📌 Products made of rattan, bamboo, cane, palm-leaf, coir, maize, rush...
- 📌 Raw materials for making handicraft



➔ ASSETS VALUATION SERVICE

AIM has a professional assessors/ values with capabilities and expertise to perfectly carry out assets valuation services in accordance with the international valuation standards. Its assets valuation reports will assist you in making important decision on your business in the following fields: Purchase, insurance, establishment of an enterprise, equitization, compensation, leasing, mortgage, financial statement, balance of investment capital, collateral, settlement of property and other fields on request.

Services available:

- Assets valuation including: Invisible and visible assets (machinery and equipment, production lines, factories, real estate...)
- Enterprise valuation
- Price valuation for clients' purposes such as Purchase; Insurance, Equitization; Compensation; Leasing; Mortgage; Financial statement; Balance of investment capital; Collateral; Settlement of property and other fields on request of clients.
- Advising matters relating to price



➔ INSPECTION TO ADMINISTRATIVE OPERATION OF THE STATE AND THE OTHER FIELDS

Services available:

- ❑ Inspection for customs clearance, taxes... (scope of inspection as follows: quantity, weight, name of commodity, types of goods, purpose of use...)
- ❑ Inspection of origin of commodity
- ❑ Inspection on quality of commodity (gemstones, precious metal) for state administration
- ❑ Inspection of hygiene and safety of foodstuffs
- ❑ Inspection for test before acceptance, balance of investment projects
- ❑ Inspection for environment protection
- ❑ Inspection for insurance



➔ DIVING, CTTV, UNDERWATER WORKS

Services available:

- ✘ Air diving 0'-220'
- ✘ Mixed gas diving 130'-300'
- ✘ Saturation diving to 1,000'
- ✘ Level I & II ultrasonic
- ✘ Level I & II mag particle
- ✘ level II, III & IV platform inspections
- ✘ Non-destructive testing
- ✘ Underwater video
- ✘ Underwater photography inspections
- ✘ Lloyds hull inspections
- ✘ Inspection reports
- ✘ Site surveys
- ✘ Underwater grit blasting
- ✘ Rig move surveys
- ✘ Underwater burning
- ✘ ESCVM (patent pending)
- ✘ Epic site clearance verification method
- ✘ Diver surveys
- ✘ Anode installations
- ✘ Cathodic protection installation
- ✘ Grinding
- ✘ Handjetting
- ✘ Jet sled burial
- ✘ Pipe cutting
- ✘ Pipeline burial
- ✘ Pipeline installation/repair
- ✘ Pipeline location riser installation/repair
- ✘ Underwater welding
- ✘ Striking diving & marine salvage wreck
- ✘ Platform pipeline removal



SURVEY & INSPECTION ORDER

Client ref. No.....

➡ **To: Agriculture – Industry – Marine Survey & Inspection Group**

Applicant.....

Address..... Email.....

Tel..... Fax.....

V.A.T code.....

Subject of inspection.....

Marks..... Pattern sample.....

Quality..... Quality.....

Transportation.....

Scope of inspection.....

Time and place of survey & inspection.....

Contact person..... Tel.....

Documents and procedure.....

Certificates / reports.....

– Home..... Original.....

– English..... Original.....

Fees of inspection..... Period of payment.....

Payment term Cash Bank Other

Date.....

Approved by us:

Applicant

(Signed and stamped)

OUR CONTACTS

➔ CORPORATE HEAD OFFICE

AIM CONTROL GROUP OF COMPANIES

No 45, Street 03,

Ward 04, District 03

Ho Chi Minh City,

Vietnam

Phone : + 84 (8) 832-7204

Fax : + 84 (8) 832-8393

Email : aimcontrol@vnn.vn; aimcontrol@media.net.vn

Web : www.ship.gr/aim.htm

www.aimcontrol.service.to

www.aimcontrolgroup.com

➔ **KEY PERSONNEL**



Dr. Nguyen Te Nhan



Master Ha Van Truong



Capt. Tran Duc Nhat



Master-Engineer Officer
Nguyen Ngoc Phu



Master of Architecture Pham
Ngoc Thao



C/Electrical Eng. Le Quang Dat



Electrical Industry Eng.
Nguyen Hai Phong



Operation Manager
Nguyen Sy Huy



Chief Engineer Nguyen Dinh
Hung



Construction Eng. Nguyen
Van Khoa



Construction Eng. Tran Duy An