

VMX24

Big capabilities in a small package.



Not many machining centers with a 24" X-axis travel have as small of a footprint (85.8" x 87.5") as the Hurco VMX24. Even fewer have an accompanying 20" Y-axis travel. Packaged with all the additional features, Hurco's VMX24 certainly stands alone.

As with all Hurco machines, the VMX24 comes with the most powerful control available. It's also rigidly constructed to eliminate vibrations—even under the heaviest cutting conditions. The standard, 10,000 rpm spindle compares favorably to many machining centers costing considerably more.

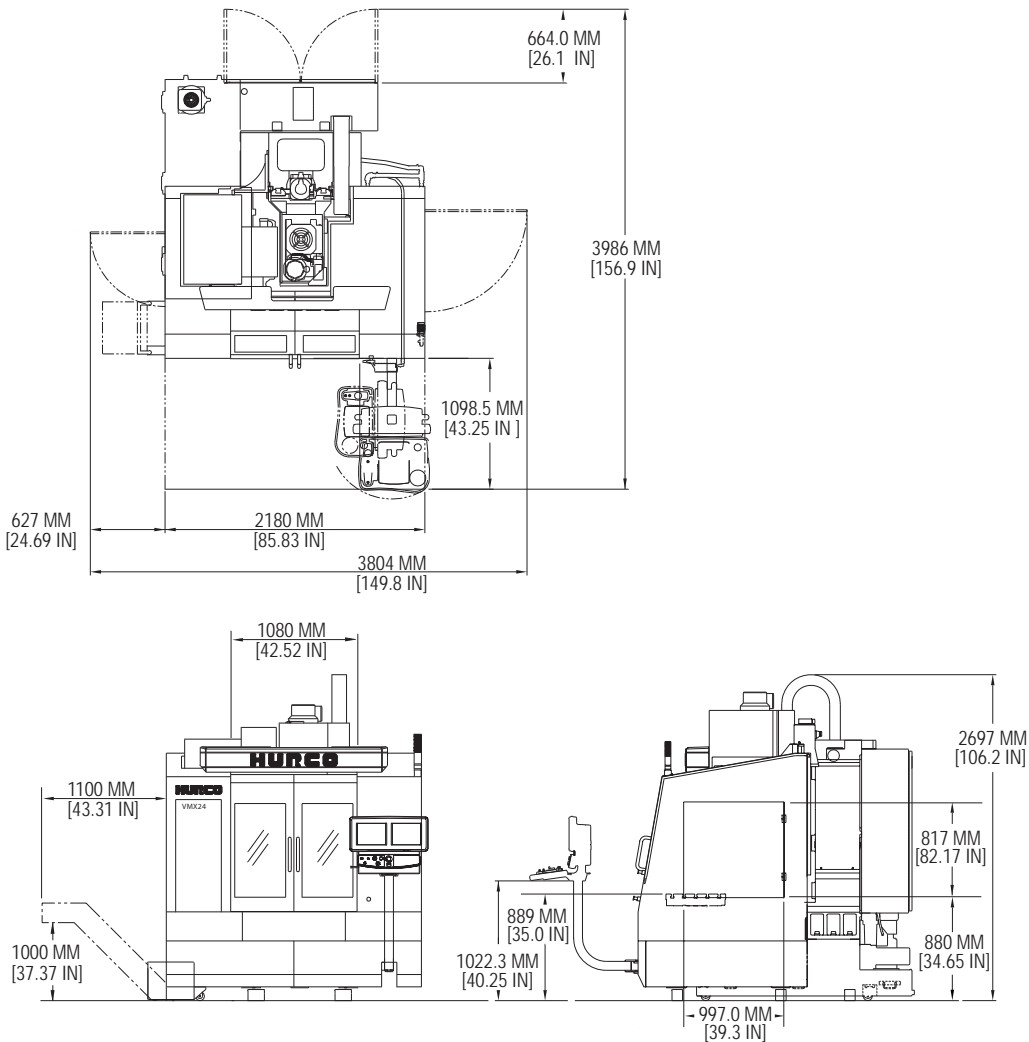
		VMX24	
X, Y, Z Axis Travel, inches (mm)		24 x 20 x 24 (610 x 508 x 610)	
Table Size, inches (mm)		30 x 20 (760 / 508)	
Max Weight on Table, lbs (Kg)		3,000 (1,360)	1,500 (680)
Peak Spindle Motor, hp (Kw)		12 (9)	20 (15)
Max Spindle Motor Torque, ft lbs (Nm) @ rpm	10k	85 (115) @ 750	75 (102) @ 1,450
	12k	70 (95) @ 900	N/A
	15k	56 (76) @ 1,125	N/A
Rapid Traverse X, Y / Z axis, inches (M) / min		1,378 / 1,181 (35 / 30)	1,181 / 787 (30 / 20)
Tools		24 CAT (BT) 40	
Positioning, inches (mm)		±0.0002 (0.005)	
Repeatability, inches (mm)		±0.0001 (0.0025)	
Machine Weight, lbs (Kg)		10,225 (4,640)	9,590 (4,350)

Optimum machine performance is reliant upon installation conditions at the facility, such as power supply, air supply, and ambient air conditions.

Best in class features

- Huge work cube (50% larger on average than competitive models) lets the operator schedule a wider variety of work.
- Robust conversational and NC programming tools provide the shop with options on how best to approach a particular part.
- Advanced NC interpreter includes powerful software features, such as graphical Data Block Search, which eliminates the tedious task of searching through hundreds of lines of code. Use the rendered graphic of the part and simply point to the spot you need to adjust—the software automatically finds the corresponding line of code.
- Exceptional cutting feed rates of up to 600 ipm with Hurco's SelectSurface Finish Quality (SFQ). Couple that with surface finishing and other process automation software options to get the fastest cut with the best quality.
- Conversational probing aligns the machine to the part instead of aligning the part to the machine—saving valuable time during setup.

VMX24



Hardware Features / Options

Coolant / Chip Removal

- Chip Conveyor
- Coolant Screen System
- Flood Coolant
- High Pressure CTS
- Telescopic Way Covers
- Top Dome
- Wash Down Gun and Air Gun
- Wash Down System

Spindle / Motor

- Dual Wound Motor
- High Speed Servo Systems
- Low Air Pressure Switch
- Motor Brake in Z-Axis
- Spindle Chiller

Tooling / Accessories

- Tooling and Visers
- Trunnion Tables
- Rotary Tables

Frame / Cabinet

- Air Conditioner
- Door Interlock
- Dual Work Lights
- E-Stop Button on Control Head
- Easy Access Side Door with Latch
- Fully Contained Tool Storage
- Linear Glass Scales (X, Y, Z)
- Linear Rails
- Lube Oil Separator
- Power Cabinet Heat Exchanger
- Solid One Piece High-Grade Cast Iron Bed

WinMax Software/Automation Packages

- Advanced Verification Graphics with 3D Solid Rendering
- Swept Surface with 3D Mold
- NC/Conversational Merge
- SelectSurface Finish Quality (SFQ)
- Tool Center Point Management
- Tool and Material Library
- 4th Axis Rotary Wrap
- UltiPocket with Helical Ramp Entry
- DXF Transfer
- Tool Probing
- Part Probing
- Industry Standard NC (ISNC)
- NC Productivity Package (NCPP)
- WinMax Desktop
- UltiNet LAN Interface

Shipping Dimensions, inches (mm) 90.6" x 116.1" x 100.00" (2,300 x 2,950 x 2,540)

Service Requirements

- Power Required 18 KVA (full load)
- Voltage Required 200-240 VAC / 50-60 Hz
- Air Required 5 CFM @ 80-100 psi (0.14 M³ / min @ 6-8 bar)