

BHAGWATI ENGINEERS... High technology enterprise, mainly deals with high technology product such as Sheet metal machinery. We have manufacturing base in Rajkot City. We have the ability to solve the design and manufacture puzzles from stand-alone machine to the whole set to meet customers' requirements. With advanced technique system like using latest machine designing technique, strong production capacity, strict quality control and scientific management, we can provide various top quality products to meet the requirements of customers.

We specialized in designing and manufacturing of high quality Metal Shearing Machine, Metal Press Brake, Bending Machine & Notching Machine. Since the inception, the company is continuously rising on the growth chart and setting very high quality standards.

We at '**Bhagwati Engineers**' Manufacturing, **ANASUYA** – Brand Mechanical / Hydraulic Shearing Machine, Hydraulic Press brake, H-frame hydraulic press, 3-Roll plate bending machine, Corner notching Machine & Other special purpose machines with very high quality design Technology by using latest 3-D CADD software.

The Company was founded in 1992. Factory has 2200 sq.ft area with fine ventilated factory building. The Well skilled & Experienced Work shop Staff is eligible for manufacturing precision complex machines.

Manufacturing Product

- POWER PRESS.
- SHEARING MACHINE.
- PRESS BRAKE.
- HYDRAULIC PRESS
- 3-ROLL PLATE BENDING MACHINE.
- SPECIAL PURPOSE MACHINE.



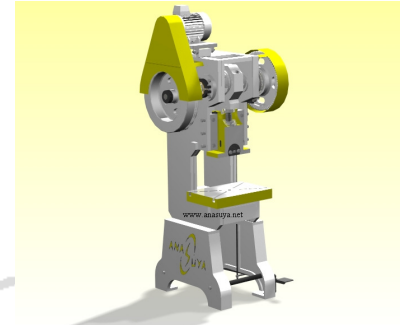
Technology at it's... Steady state



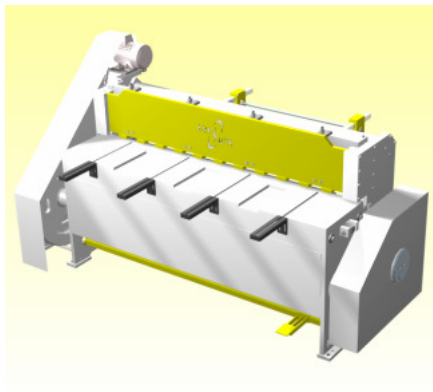
PRODUCT CATALOGUE

POWER PRESS

- ANASUYA Power Presses have been designed for continuous production & accuracy.
- The frame is of solid steel fabricated with suitable cross ribbing. The clutch is of rolling key type & gives continuous strokes for mass production.
- Crank shaft is made of special Alloy Steel and fitted in with Gun Metal bushes for smooth working and longer life.
- Table and ram are perfectly aligned to each other to obtain highly precision press operation.



MECHANICAL SHEARING MACHINE



- ANASUYA Guillotine Shearing Machines have been designed & developed through structural analysis technique for continuous Production, Accuracy and Repeatability. Rigid, Interlock designed, heavily welded construction of MS plates and sections to take full load with minimum deflection.
- The arm is guided throughout its length by guideways ensuring proper clean cut. A rigid clutch mechanism is provided for giving continuous strokes for production.
- The spring loaded Mechanical Hold Down maintains a positive and uniform pressure along the full length of work piece avoiding slipping and bowing of sheet resulting a clean square cut.
- ANASUYA Shears are provided with four edge rectangular high quality High Carbon High Chromium (HCHCR) knives for longer life. Gun Metal Bushes

are provided in all running parts. A rigid and accurate mechanical back gauge & hand operated Single Shot Lubrication system is provided with all ANASUYA shears as standard equipment.

HYDRAULIC PRESS BRAKE

- The all steel structure of ANASUYA Press Brakes consist of side frames, ram, T-Beam type table and pair of levers manufactured from ultrasonically tested steel plates.
- All sections are designed to give minimum deflections and maximum rigidity as per international standards. Pair of hydraulic cylinders are synchronized by a heavy duty torque tube welded to the levers.
- This offers absolute parallelism between them and table working surfaces





HYDRAULIC SHEARING MACHINE



- » The stable robust, all welded steel frame from ultra sonically tested plates is of top quality. Raw & table designed with special inclined member & box type structure for maximum strength.
- » The top beam is guided by three point roller with replaceable hardened liners for least wear. This eliminates lubrication of steel to provide better quality of cutting for a longer time.
- » Rake angle can be varied to permit shearing of higher thickness than nominal capacity & facilitating distortion free shearing of thin sheets.
- » The fastest & easiest way of blade clearance setting without need of feeler gauge, which helps burr-free edges.
- » Positive holding by hydraulic hold downs before shearing avoids slippage of sheets & independent operation of hold downs for clamping of sheet helps checking of mark without taking shear stroke
- » Front gauging by disappearing stoppers mounted on left squaring arm. Robust, heavy & accurate back gauging to set cutting width.
- » Hydraulic cylinder are designed with both low & high pressure sealing, hard chrome plated rod also with special type guide for long life without leakage.

» Hydraulic components are of international quality standards & assembled on specially designed compact manifold block for easy maintenance

H-FRAME HYDRAULIC PRESS

- 'ANASUYA'- H Frame press structures are of various capacities & are available for different types of works. Steel plates & designed columns are welded together for making 'H'-Frame.
- The main advantage of 'H'-frame presses are differ then other presses due to its variable daylight. It's highly applicable for straightening, bending, bush fitting etc.
- H-Frame presses are manufactured in two categories as a hand operated and power operated. Hand operated press are used for frequent jobs and power operated presses in productions work. Power operated press have a power packs for minimizing a manual power with high torque & less effort.

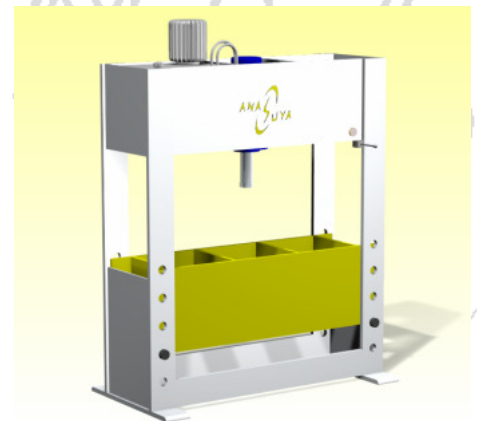


PLATE BENDING MACHINE



- 'ANASUYA'-Hydraulic 3-Rolls Bending machine is designed to bend plated of big thickness. This machine is used to make the steel plate into barrel shape, circular shape and conical shape, etc.
- The upper roller can move, it can finish the pre-bending work and coiling work at the same machine. The upper roller is solid-type design, so it has the anti-deformation function.
- There is equipped the support rollers under the lower rollers it can help to coil the high precision products. The lower rollers
-

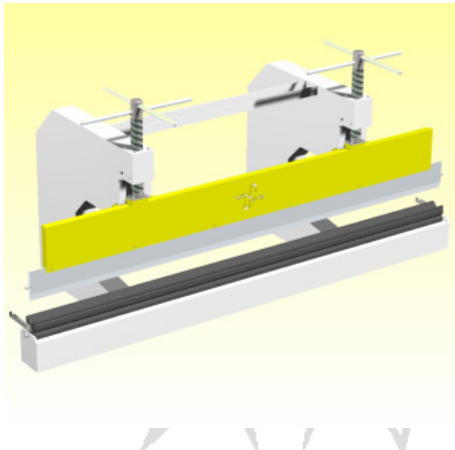


MARUTI INDUSTRIAL AREA, GONDAL
ROAD, NEAR OCTROI POINT,
RAJKOT - 360 004. (GUJARAT) INDIA.
Ph.: + 91 - 281 - 2372576
Mo.: + 91 - 9898974320 , 9426734687
WEBSITE: www.anasuya.net
E-mail : bhagwatiengg@hotmail.com



- are fixed symmetrically deployed relatively to upper roller, mechanical drive is employed for driving lower rollers. Upper roller ascends or descends at the central symmetric location of the lower rollers; the ascending and descending are hydraulic driven.
- In certain models Lower roller moves to the left or right position to prepare for pre-bending work, the shift position is controlled by the hydraulically or manually. Moving control is employed for the control system

HAND PRESS BRAKE

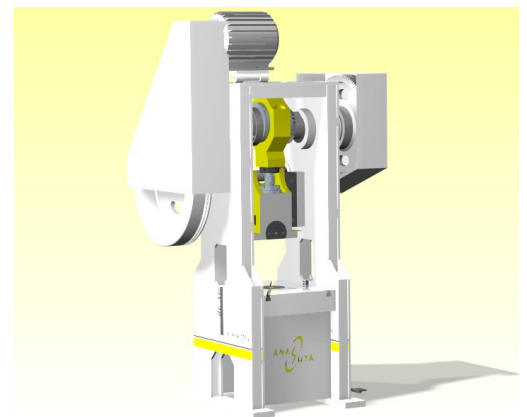


Hand press brake are most useful for half and light angle bending

- **Side-Wall:** Made From M.S. Plates, Vertical And Horizontal Supports Are Provided For More Strength.
- **Screw:** Made From Mild Steel Square Thick Threads. Both The Ends Are Tempered To Increase Strength And To Eliminate Wear Of Screws.
- **Upper Beam:** Made From Heavy Solid Plates. All Surfaces Are Surfaced To Get Accuracy.
- **V-Block:** Made From Mild Steel And Sharpened Up To 20 After Sufficient Machining. An Additional Half Round Die Is Supplied As Optional Accessorie Is If Required By Cutomer

PILLAR POWER PRESS

- We offer quality pillar type - H type power presses that are widely acknowledged for optimum performance. Sturdy in construction these have gained wide appreciation for excellent performance, low maintenance and longer and reliable serviceability
- Steel fabricated straight sided presses
- Available in single point and two point geared, ungeared type
- Available with Rolling Key (standard supply) or Pneumatic Clutch (Photograph shows pneumatic clutch which is optional equipment)
- 'H' shaped press frame provides extreme structural rigidity and uniform parallel deflection producing increased tool life
- Heavy duty machine, forged with tensile steel crankshaft to ensure minimum deflection
- Variable stroke can be changed in minutes to provide ideal stroke for specific operation





PHOTOGALLERY





MARUTI INDUSTRIAL AREA, GONDAL
ROAD, NEAR OCTROI POINT,
RAJKOT - 360 004. (GUJARAT) INDIA.
Ph.: + 91 - 281 - 2372576
Mo.: + 91 - 9898974320 , 9426734687
WEBSITE: www.anasuya.net
E-mail : bhagwatiengg@hotmail.com



MARUTI INDUSTRIAL AREA, GONDAL
ROAD, NEAR OCTROI POINT,
RAJKOT - 360 004. (GUJARAT) INDIA.
Ph.: + 91 - 281 - 2372576
Mo.: + 91 - 9898974320 , 9426734687
WEBSITE: www.anasuya.net
E-mail : bhagwatiengg@hotmail.com



Manufacturing Facility

The production blocks have various special purpose machines, turning, grinding, drilling and boring machines, and fabrication equipment, crane facility, a small CAD work station, extensive material handling facilities etc. are part of the set-up.

The Human Resource

The most valuable asset of the company is the committed and dedicated workforce.

Relations with employees at all levels have been extremely cordial throughout the company's existence. The employees have, in a large measure, contributed immensely in bringing the company to its present level, through team spirit, initiative and expressing their views in a constructive manner.

Principles and Policies

'BE' believes in creating wealth by socially and ecologically appropriate means. Honesty and transparency are considered very valuable. Interest of employees, customers and investors is never compromised for the benefit of the owners or managers.

Current Business Status

The company is viewed by its customer base as a solution provider, not a mere product manufacturer. Machinery, equipment and services are so designed that each customer has been provided with a package that suits his specific requirement.

Fabrication & Assembly Shop

We have suitably spaced fabrication & assembly shop with well equipped welding, plate profile cutting, & material handling facilities.



MARUTI INDUSTRIAL AREA, GONDAL
ROAD, NEAR OCTROI POINT,
RAJKOT - 360 004. (GUJARAT) INDIA.
Ph.: + 91 - 281 - 2372576
Mo.: + 91 - 9898974320 , 9426734687
WEBSITE: www.anasuya.net
E-mail : bhagwatiengg@hotmail.com



Technology at it's... Steady state

Insisting on the principles of "quality first, credit first", we have already established favorable relationships with many clients. We warmly welcome old and new clients to visit our company and establish business relationships with us. We do believe our mutual cooperation will create a brilliant future.

-DODIA HARSHAD J.

Some of our Esteemed clients:

Renault Nissan Automotive India Pvt. Ltd- Chennai (Mr. Senthil Murugan: 09176682282)
 Tirth Agro Technology Pvt. Ltd –Rajkot (Mr. Ashvin Gohil 0281-2377204.)
 Tough International (mica) Ltd. –Jaipur (Mr. 91-9887019999)
 Ajanta Transformer Pvt Ltd (Mr.Manish- 9825323500)
 Shree Bhagwati Fabricator Pvt Ltd. Rajkot (Mr Ramesh.:9825217195)
 Ashwin Metal Works Pvt Ltd.-Morvi (02822) 222546)
 Perfect Engineering Works. –Rajkot (Mr. Jayanti Pitroda: 9427252637)
 Tirumala Stamping-Rajkot (Mr. Sanjay: 9624761000)
 Ashwin Associates-Ahmedabad (Mr. Ashwin:)
 Kawa Press System Pvt. Ltd. –Veraval
 Shailesh Machine Tools –Rajkot
 Ashwin Associates –Ahemdabad
 Chamunda Engineering works -Rajkot
 Devi food Products -Mumbai
 Prakash Machine Tools -Mumbai
 Uphar Products -Rajkot
 Tirupati Stamping -Rajkot
 Divine Machines Pvt. Ltd. –Veraval
 Darshan Plastics. –Rajkot



MARUTI INDUSTRIAL AREA, GONDAL
 ROAD, NEAR OCTROI POINT,
 RAJKOT - 360 004. (GUJARAT) INDIA.
 Ph.: + 91 - 281 - 2372576
 Mo.: + 91 - 9898974320 , 9426734687
 WEBSITE: www.anasuya.net
 E-mail : bhagwatiengg@hotmail.com

Technology at it's... Steady state