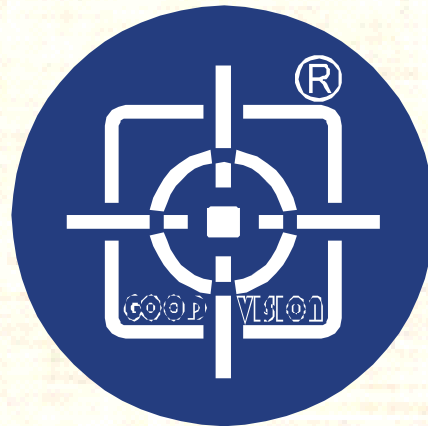




东莞兆丰精密仪器有限公司
GOOD VISION PRECISION INSTRUMENT CO.,LTD

GOOD VISION



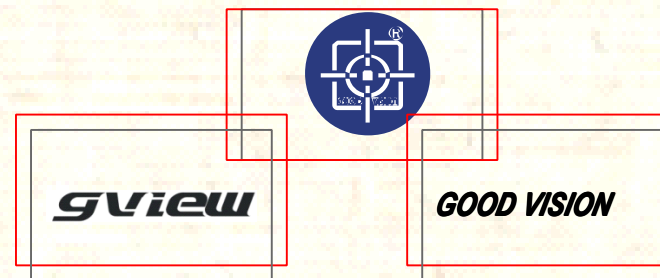
Top professional vision measuring system manufacturer

Company Profile

Good Vision Precision Instrument CO., Ltd is one of wholly owned subsidiary invested by GPM group in China mainland, is one of high-tech enterprise of precision video measuring instrument manufacturer and developer.

GPM group was founded in 2004, Subsidiary enterprises including: Good Vision Precision Instrument Co., Ltd, Dongguan Goodwill Precision Machinery Co., Ltd, Suzhou Goodwill Zhongli Precision Machinery Co., Ltd, Suzhou Good Vision Precision Machinery Co., Ltd.

The company devoted to the philosophy of management "people-oriented, striking for the best, exploration and innovation, lasting development". Base on excellent technical talents, rich metrology experience and strong technical strength, combining the international advanced technology to develop a series of video measuring instruments with leading technique, reliable quality and powerful function, as well as provide you excellent measurement solutions, top professional equipment and new product development services etc., effectively improved your measurement precision and the market competition. At the same time, Our Co. cooperated with light-instrument-electronic integrative research institute of South China University of technology, the research team which includes doctors, masters, specialists and scholars are working on Geometrical Survey Technology. Launching variety products with latest scientific and technology to meet requirement of customers continuously.



Optical measurement Famous Brand

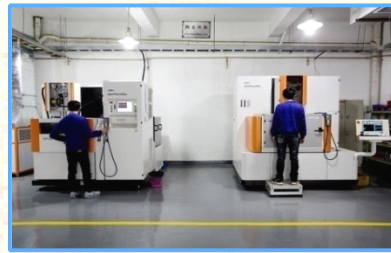


Workshop

Assembling



Machining





东莞兆丰精密仪器有限公司
GOOD VISION PRECISION INSTRUMENT CO.,LTD

Enterprise Culture





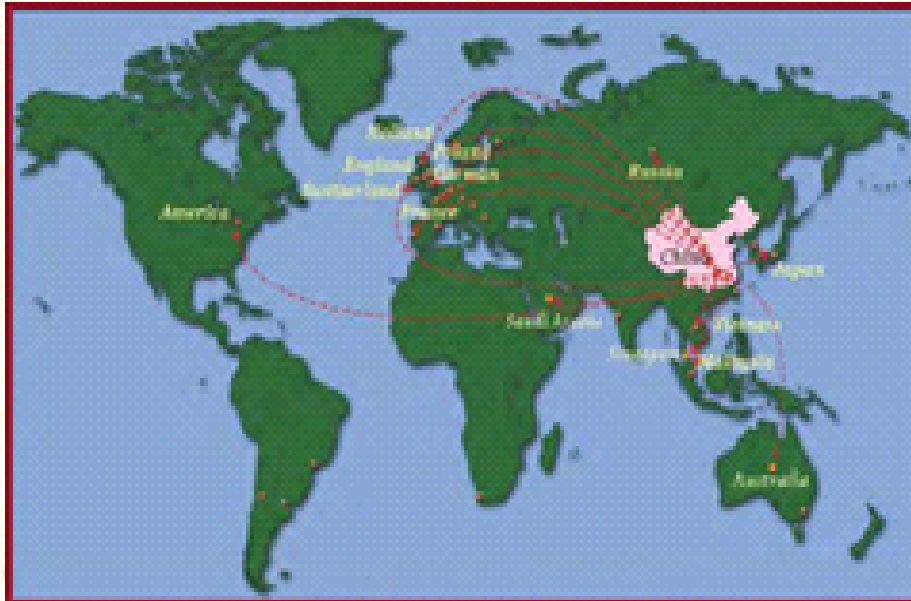
东莞兆丰精密仪器有限公司
GOOD VISION PRECISION INSTRUMENT CO.,LTD

Certificates





Market



Market Covers More Than 20 Countries And Regions



Branches Spread 9 Provinces In China



东莞兆丰精密仪器有限公司
GOOD VISION PRECISION INSTRUMENT CO.,LTD

Main Customers





Products



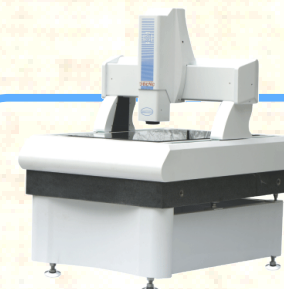
LUXURY series (5-axis CNC)

X、 Y liner accuracy(um): $1.8+L/250$
X-Y vector accuracy(um): $2+L/200$
Z axis accuracy(um): $\leq 2.8+L/200$



VIP series (4-axis CNC)

X、 Y liner accuracy(um): $2+L/250$
X-Y vector accuracy(um): $2.5+L/200$
Z axes accuracy(um): $\leq 3+L/150$



VIP series (4-axis CNC)

X、 Y liner accuracy(um): $2+L/200$
X-Y vector accuracy(um): $3+L/150$
Z axis accuracy(um): $\leq 3+L/150$



MVP 3D series (manual, semiautomatic, auto-)

X、 Y liner accuracy(um) $2.5+L/250$
X-Y vector accuracy(um): $3+L/200$
Z axis accuracy(um): ≤ 5



GV 3D series (manual)

X、 Y liner accuracy(um): $3+L/200$
X-Y vector accuracy(um): $3.5+L/150$
Z axis accuracy(um): ≤ 5



GVS 2D series (manual)

X、 Y liner accuracy(um): $+L/200$
X-Y vector accuracy(um): $4+L/150$



LUXURY SERIES (5-axis CNC)

- ◇ “000” grade marble base, guide rail cardinal plane 's flatness, straightness $\leq 0.005\text{mm}$
- ◇ Video magnification: 25-152X
- ◇ Germany Heidenhain self-stick grating, distinguish ability 0.005mm
- ◇ Automatic continuous zoom objective lens 0.7-4.5X
- ◇ Germany industry CCD camera
- ◇ Intelligent control lighting system, 3 circles 8 zones internal ring light +coaxial epi-illumination +lift type 3 circles 8 zones light
- ◇ Full auto CNC measuring software, smart program, auto measuring
- ◇ Renishaw probe and KEYENCE CCD laser probe for optional
- ◇ X,Y linear 1.8+L/250um

| Parameter | | Model | Luxury300CNC | Luxury400CNC | Luxury500CNC |
|---------------------|----------------------|-------|---------------|---------------|----------------|
| | | | | | |
| Weight | | | 285 | 345 | 425 |
| Dimension | | | 1000x720x1670 | 1205x900x1700 | 1425x1060x1985 |
| Measuring range(mm) | X | | 300 | 400 | 500 |
| | y | | 200 | 300 | 400 |
| | z | | 200 | 200 | 300 |
| Working stage(mm) | Marble Stage | | 647x380 | 827x480 | 1012x585 |
| | Glass board | | 315x245 | 445x345 | 545x445 |
| | Loading Weight (kgs) | | 30 | 30 | 30 |





VIP SERIES (4-axis CNC)

- ◇ "000" grade marble base, guide rail cardinal plane's flatness, straightness $\leq 0.005\text{mm}$
- ◇ Video magnification: 25-160X
- ◇ Germany Heidenhain self-stick grating, distinguish ability 0.005mm
- ◇ Automatic continuous zoom objective lens 0.7-5X
- ◇ Germany industry CCD camera
- ◇ Controllable 8 zones 3 circles surface lighting + same axis lighting + 3 circles 8 zones auto elevation assist lighting + bottom track parallel lighting
- ◇ Full auto CNC measuring software, smart program, auto measuring
- ◇ Renishaw probe and KEYENCE CCD laser probe for optional
- ◇ X,Y linear 2+L/250um

| Parameter | | Model | VIP300CNC | VIP400CNC | VIP500CNC |
|---------------------|----------------------|-------|---------------|---------------|----------------|
| | | | | | |
| Weight | | | 285 | 345 | 425 |
| Dimension | | | 1000x720x1670 | 1205x900x1700 | 1425x1060x1985 |
| Measuring range(mm) | X | | 300 | 400 | 500 |
| | Y | | 200 | 300 | 400 |
| | Z | | 200 | 200 | 300 |
| Working stage(mm) | Marble Stage | | 647x380 | 827x480 | 1012x585 |
| | Glass board | | 315x245 | 445x345 | 545x445 |
| | Loading Weight (kgs) | | 30 | 30 | 30 |





VIP SERIES GANTRY TYPE (4-axis CNC)

- ◇ "000" grade marble base, guide rail cardinal plane's flatness, straightness $\leq 0.005\text{mm}$
- ◇ Guide rail assembly by horizontal and vertical combine way, motion linear precise $\leq 0.005\text{mm}$
- ◇ Germany Heidenhain self-stick grating, distinguish ability 0.005mm
- ◇ Auto zoom lens
- ◇ Germany industry CCD camera
- ◇ Controllable 8 zones circle surface lighting +same axis lighting +3 circle 8 zones auto elevation assist lighting +bottom track parallel lighting
- ◇ Full auto CNC measuring software, smart program, auto measuring
- ◇ Renishaw probe and KEYENCE CCD laser probe for optional
- ◇ X,Y linear 2+L/300um
- ◇ Max. measuring scope can be 2000*1500mm



| Parameter | | Model | VIP600CNC | VIP800CNC | VIP100CNC | VIP1200CNC | VIP1500CNC |
|---------------------|----------------------|--------|----------------|----------------|----------------|----------------|----------------|
| | | Weight | 1600 | 1800 | 2000 | 2200 | 2400 |
| Dimension | | | 1350x1200x1730 | 1550x1200x1730 | 1720x1400x1750 | 1920x1600x1750 | 2220x1800x1760 |
| Measuring range(mm) | X | | 600 | 600 | 800 | 1000 | 1200 |
| | Y | | 600 | 800 | 1000 | 1200 | 1500 |
| | Z | | 200 | 200 | 200 | 200 | 200 |
| Working stage(mm) | Marble Stage | | 1300x1100 | 1500x1100 | 1670x1300 | 1870x1500 | 2170x1700 |
| | Glass board | | 698x718 | 898x718 | 1098x918 | 1298x1118 | 1598x1318 |
| | Loading Weight (kgs) | | 50 | 50 | 50 | 50 | 50 |



MVP SERIES (3D)

- ◇ "00" grade marble base
- ◇ Improved light weight double layer work table structure reduce inertance
- ◇ Germany SCHNEEBERGER precision cross roller guide rail
- ◇ Auto type use TBI grind C3 grade ball screw, work with servo motor loop control system, manual type use precision non-thread lead screw, semi auto type use TBI grind C3 grade screw
- ◇ Germany industry CCD camera
- ◇ Controllable 8 zones circle surface lighting +same axis lighting +bottom track parallel lighting
- ◇ Precision optical scale, distinguish ability 0.0005mm
- ◇ Japan V-TECH industry CCD camera

| Parameter | | Model | | | |
|----------------------|----------------------|-------------|--------------|---------------|---------------|
| | | MVP200M/A | MVP200M/A | MVP200M/A | MVP200M/A |
| Weight | | 160 | 230 | 400 | 540 |
| Dimension | | 650X550X935 | 800X700X1000 | 1000X800X1030 | 1100X900X1060 |
| Measuring range (mm) | X | 200 | 300 | 400 | 500 |
| | Y | 100 | 200 | 300 | 400 |
| | Z | 150 | 200 | 200 | 200 |
| Working stage (mm) | Marble Stage | 365X266 | 487X367 | 606X476 | 706X576 |
| | Glass board | 260X160 | 345X245 | 445X345 | 545X445 |
| | Loading Weight (kgs) | 20 | 20 | 30 | 30 |





GV SERIES (3D)

- ◇ High precision marble base, marble work stage
- ◇ Improved light weight double layer work table structure
- ◇ Precision cross roller guide rail
- ◇ Japan V-TECH industry CCD camera
- ◇ Controllable 8 zones circle surface lighting +bottom track parallel lighting
- ◇ Precision optical scale, distinguish ability 0.001mm

| Parameter | | Model | GV200M-3D | GV300M-3D | GV400M-3D | GV500M-3D |
|---------------------|----------------------|--------|-------------|-------------|--------------|---------------|
| | | Weight | 140 | 210 | 365 | 500 |
| Dimension | | | 640x560x915 | 800x640x940 | 970x750x1100 | 1170x850x1110 |
| Measuring range(mm) | X | | 200 | 300 | 400 | 500 |
| | Y | | 100 | 200 | 300 | 400 |
| | Z | | 150 | 150 | 200 | 200 |
| Working stage(mm) | Marble Stage | | 365x266 | 487x367 | 606x476 | 706x576 |
| | Glass board | | 260x160 | 345x245 | 445x345 | 545x445 |
| | Loading Weight (kgs) | | 20 | 20 | 30 | 30 |





GVS SERIES (2D)

- ◇ High precision marble base, marble work stage
- ◇ Improved light weight double layer workstage structure
- ◇ Precision cross roller guide rail
- ◇ High resolution color CCD camera
- ◇ LED ring surface light +parallel light in bottom
- ◇ Precision optical scale, distinguish ability 0.001mm

| Parameter | | Model | GV200M-2D | GV300M-2D | GV400M-2D |
|---------------------|---------------------|-------|-------------|-------------|--------------|
| | | | | | |
| Weight | | | 75 | 95 | 160 |
| Dimension | | | 660x550x780 | 760x580x820 | 970x750x1000 |
| Measuring range(mm) | X | | 200 | 300 | 400 |
| | Y | | 100 | 200 | 300 |
| | Z | | 100 | 100 | 150 |
| Working stage(mm) | Marble stage | | 356x266 | 487x367 | 606x476 |
| | Glass board | | 260x160 | 345x245 | 445x345 |
| | Loading weight(kgs) | | 20 | 20 | 25 |

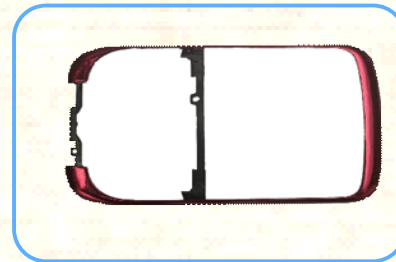
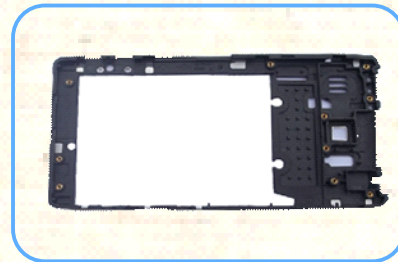
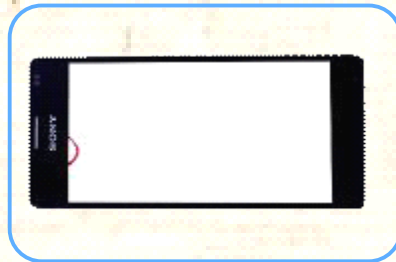
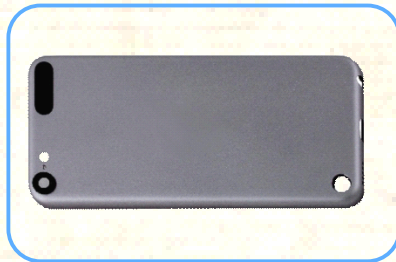




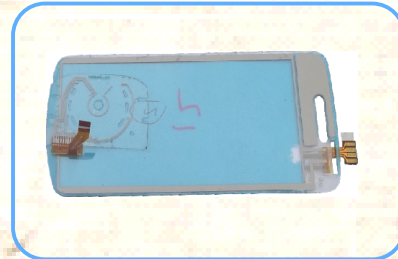
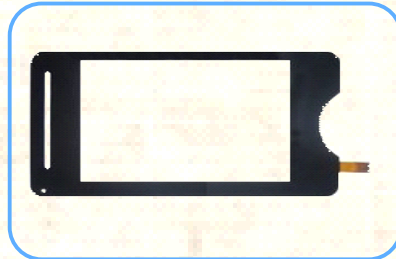
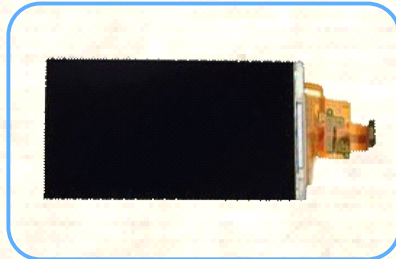
Application

*** Mainly applied to geometry measurement of the workpieces , widely used in electronic, mold, rubber, plastic products, hardware, tool, spring, auto parts and teaching, scientific research, product development and other fields.**

Mobile-phone Cover



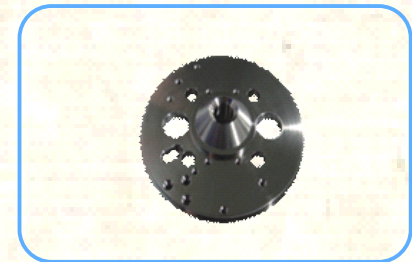
Touch Screen



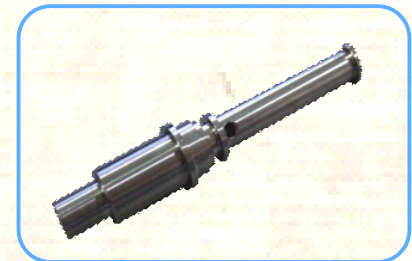
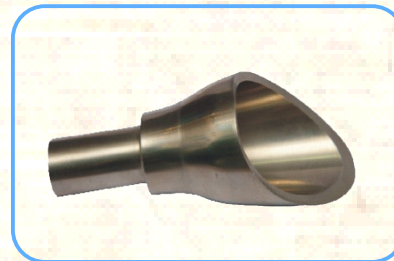
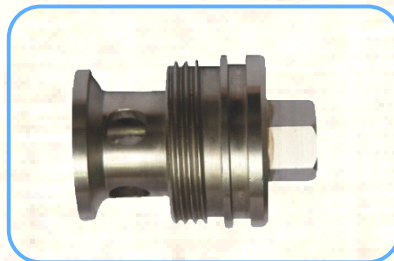


Application

Precision Machine Part



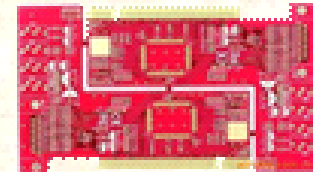
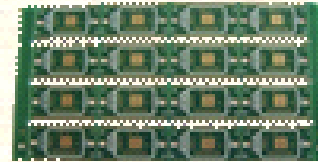
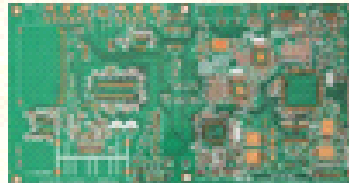
Precision Shaft



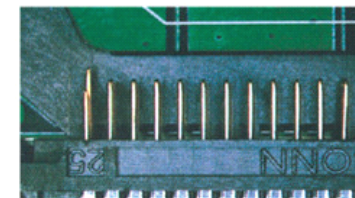
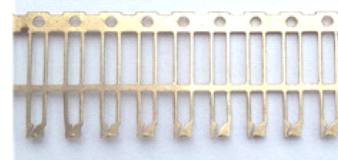
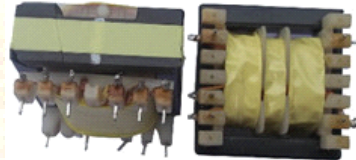


Application

PCB(Printed Circuit Board)



Capacitor & Connector



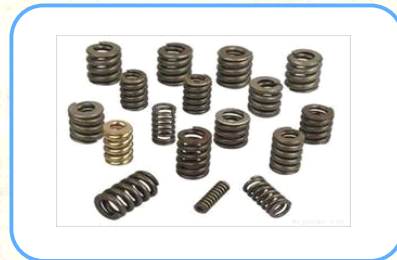


Application

IC & Electronic Component



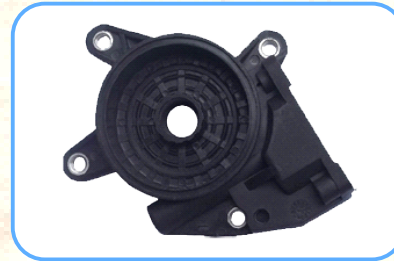
Spring & Bolt





Application

Bottle cap & Plastic part



Gear





东莞兆丰精密仪器有限公司
GOOD VISION PRECISION INSTRUMENT CO.,LTD

Thank You !

