

APA SERIES



- With high rigidity design in machine frame , the machine body is welded of quality steel sheet and treated by tension elimination, improve stability and reliability of precision of the machine.
- Keep the transmission center and machine center in uniformity, guarantee the precision of pressing.
- In order to guarantee the machine running in stable and smooth, adopts the design of symmetrical boards with balancer.
- The precision of mold adjusting up to 0.1mm,safety,reliable and convenient.
- Crank, gear.connect bar are oxidized hardening and milled, having super comprehensive mechanical performance and durable function.
- Used reliable high sensitive clutch/brake and international up-to-date twin electromagnetic valve, overloading protector can guarantee the precision of slider running and stop and safe production of the machine.
- Reasonable structural design, is benefit for automation production and reduce cost ,improve efficiency.
- Advanced design principle, low noise, low consumption, low cost , save energy.

Standard Accessories

- > Inverter
- > Hydraulic over-load protector
- > Slide adjust (60Tons and below)
- > Slide adjust device(80Tons and above)
- > Die height indicator (60Tons and below)
- > Die height indicator (60Tons and above)
- > Balance device
- > Rotary cam switch
- > Misfeed detection consent
- > Power supply
- > Crank angle indicator
- > Electrical stroke counter
- > Air source receptacle
- > Against over-run safety device
- > Air ejector
- > Maintenance tool box
- > Operation manual

Optional Accessories

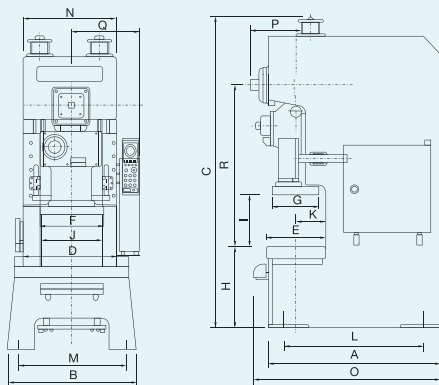
- > High performance wet clutch & brake
- > Electrical automatic lubrication system
- > Pneumatic die cushion device
- > Foot switch
- > Quick die change device (die lifter, clamp and die arm sepjes)
- > Slide knock-out device
- > Anti-vibration press mount
- > Photo-electronic safety device
- > Feeder
- > Uncoiler
- > Leveler
- > Mechanism hand
- > Die room light
- > Touch pad(preset, total counter)
- > PAC 100 counter system
- > Human-computer counter system

Standard Accessories

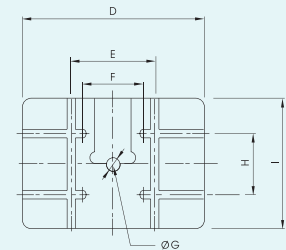
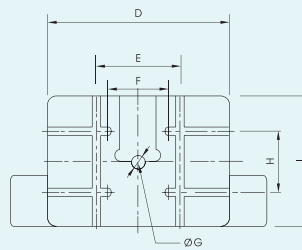
Name		APA-15	APA-25A	APA-25		APA-35		APA-45		APA-60	
Model		V	V	V	H	V	H	V	H	V	H
Capacity	Ton	15	25	25		35		45		60	
Rated tonnage point	mm	1	3.2	3.2	1.6	3.2	1.6	3.2	1.6	4	2
Speed changing	s.p.m	120-180	60-140	60-140	130-200	40-120	110-180	40-100	100-150	35~90	80-120
Stable speed	s.p.m	130	110	110		85		75		65	
Stroke	mm	60	80	60	30	70	40	80	50	120	60
Die height	mm	200	195	200	215	220	235	250	265	310	340
Slide adjustment	mm	50	50	50		55		60		75	
Slide area	mm	300×230×50	300×230×50	300×230×50		360×250×50		400×300×60		500×360×70	
Bolster area	mm	680×300×70	680×300×65	680×300×70		800×400×70		850×440×80		900×500×80	
Shank hole	mm	∅38.1	∅38.1	∅38.1		∅38.1		∅38.1		∅50	
Main motor	kw.p	2.2×6	3.7×4	3.7×4		3.7×4		5.5×4		5.5×4	
Slide adjust device	HP	Manual operation									
Air pressure	kg/cm2	6	6	6		6		6		6	
Presses precision		GB(JIS)1class	GB(JIS)1class	GB(JIS)1class		GB(JIS)1class		GB(JIS)1class		GB(JIS)1class	
Presses dimension	mm	1236×830×1920	1280×850×2200	1280×850×2200		1380×900×2400		1575×950×2500		1595×1000×2800	
Presses weight	Tons	1.8	2.1	2.1		3		3.8		5.6	
Die cushion capacity	Ton	-	-	-		2.3		2.3		3.6	
Stroke	mm	-	-	-		50		50		70	
Die cushion effective area	mm2	-	-	-		300×230		300×230		350×300	

APA SERIES

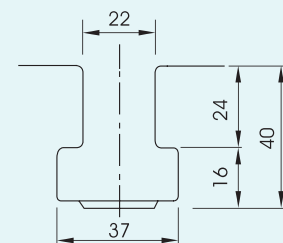
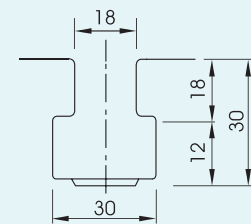
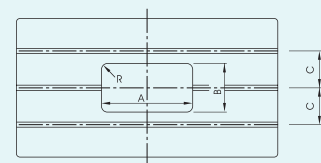
Model	A	B	C	D	E	F	G	H	I	T型沟
APA-15	240	120	90	300	-	150	∅ 38.1	80	230	I
APA-25A	240	120	90	300	-	150	∅ 38.1	80	230	I
APA-25	240	120	90	300	-	150	∅ 38.1	80	230	I
APA-35	280	140	120	360	-	160	∅ 38.1	100	250	I
APA-45	300	150	120	400	-	210	∅ 38.1	120	300	I
APA-60	320	160	150	500	220	220	∅ 50	160	360	II
APA-80	360	180	150	560	300	220	∅ 50	180	420	II
APA-110	400	200	160	650	300	220	∅ 50	220	470	II
APA-160	440	220	220	700	300	175	∅ 65	220	550	II
APA-200	480	240	280	850	420	200	∅ 65	300	630	II
APA-260	520	260	290	950	420	200	∅ 65	300	700	II
APA-315	520	260	290	950	420	200	∅ 65	300	700	II



Slide



Bolster



APA-80		APA-110		APA-160		APA-200		APA-260		APA-315	
V	H	V	H	V	H	V	H	V	H	V	H
80		110		160		200		260		315	
4	2	6	3	6	3	6	3	7	3.5	7	3.5
35-80	80-120	30-60	60-90	20-50	40-70	20-50	50-70	20-40	40-50	20-40	40-50
65		50		35		35		30		30	
150	70	180	80	200	90	200	100	250	150	250	150
340	380	360	410	460	510	460	510	500	550	520	570
80		80		100		110		120		120	
560×420×70		650×470×80		700×550×90		850×630×90		950×700×100		950×700×100	
1000×550×90		1150×600×110		1250×800×140		1400×820×160		1500×840×180		1500×840×180	
∅50		∅50		∅65		∅65		∅65		∅65	
7.5×4		11×4		15×4		18×4		22×4		30×4	
Electrical driving											
6		6		6		6		6		6	
GB(JIS)1class		GB(JIS)1class		GB(JIS)1class		GB(JIS)1class		GB(JIS)1class		GB(JIS)1class	
1800×1180×2980		1900×1300×3200		2315×1400×3670		2615×1690×4075		2780×1850×4470		2780×1870×4490	
6.5		9.6		16		23		32		34	
3.6		6.3		10		14		14		14	
70		80		80		100		100		100	
450×310		500×350		650×420		710×480		810×480		810×480	

APL SERIES



With high rigidity design in machine frame , the machine body is welded of quality steel sheet and treated by tension elimination, improve stability and reliability of precision of the machine.

Adjustable stroke of slide in 12 gears, to meet the punch processing for various dies.

Standard Accessories

- > Inverter
- > Hydraulic over-load protector
- > Slide adjust (60Tons and below)
- > Slide adjust device (80Tons and above)
- > Die height indicator (60Tons and below)
- > Die height indicator (60Tons and above)
- > Balance device
- > Rotary cam switch
- > Misfeed detection consent
- > Power supply
- > Crank angle indicator
- > Electrical stroke counter
- > Air source receptacle
- > Against over-run safety device
- > Air ejector
- > Maintenance tool box
- > Operation manual

Optional Accessories

- > High performance wet clutch & brake
- > Electrical automatic lubrication system
- > Pneumatic die cushion device
- > Foot switch
- > Quick die change device (die lifter, clamp and die arm sepies)
- > Slide knock-out device
- > Anti-vibration press mount
- > Photo-electronic safety device
- > Feeder
- > Uncoiler
- > Leveler
- > Mechanism hand
- > Die room light
- > Touch pad(preset, total counter)
- > PAC 100 counter system
- > Human-computer counter system

Functions Features

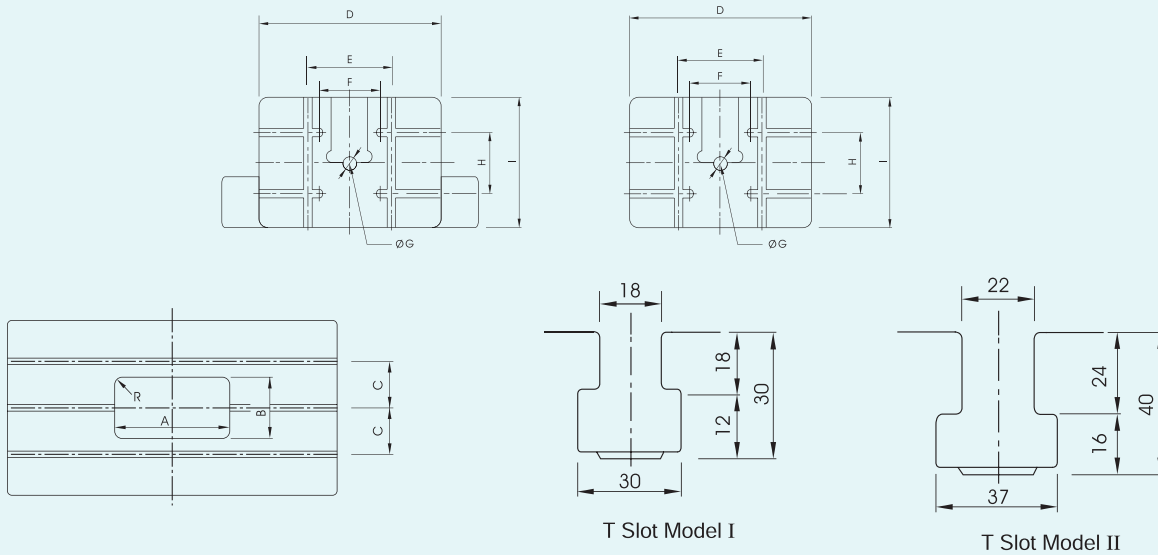
- Keep the transmission center and machine center in uniformity, guarantee the precision of pressing.
- In order to guarantee the machine running in stable and smooth, adopts the design of symmetrical boards with balancer.
- The precision of mold adjusting up to 0.1mm,safety,reliable and convenient.
- Crank, gear,connect bar are oxidized hardening and milled, having super comprehensive mechanical performance and durable function.
- Used reliable high sensitive clutch/brake and international up-to-date twin electromagnetic valve, overloading protector can guarantee the precision of slider running and stop and safe production of the machine.
- Reasonable structural design, is benefit for automation production and reduce cost ,improve efficiency.
- Advanced design principle, low noise, low consumption, low cost , save energy.

Standard Accessories

Name		APL-25	APL-35
Capacity	Ton	25	35
Rated tonnage point	mm	3.2	3.2
Speed changing	s.p.m	60-140	40-120
Stable speed	s.p.m	110	85
Stroke	mm	12-60	15-70
Die height	mm	200	220
Slide adjustment	mm	50	55
Slide area	mm	300×230×50	360×250×50
Bolster area	mm	680×300×70	800×400×70
Shank hole	mm	∅38.1	∅38.1
Main motor	kw,p	3.7×4	3.7×4
Slide adjust device	HP	Manual operation	
Air pressure	kg/cm2	6	6
Presses precision		GB(JIS)1class	GB(JIS)1class
Presses dimension		1280×850×2200	1380×900×2400
Presses weight	Tons	2.1	3
Die cushion capacity	Ton	-	2.3
Stroke	mm	-	50
Die cushion effective area	mm2	-	300×230



Model	A	B	C	D	E	F	G	H	I	T Slot
APL-25	240	120	90	300	-	150	∅ 38.1	80	230	I
APL-35	280	140	120	360	-	160	∅ 38.1	100	250	I
APL-45	300	150	120	400	-	210	∅ 38.1	120	300	I
APL-60	320	160	150	500	220	220	∅ 50	160	360	II
APL-80	360	180	150	560	300	220	∅ 50	180	420	II
APL-110	400	200	160	650	300	220	∅ 50	220	470	II
APL-160	440	220	220	700	300	175	∅ 65	220	550	II
APL-200	480	240	280	850	420	200	∅ 65	300	630	II
APL-260	520	260	290	950	420	200	∅ 65	300	700	II



T Slot Model I

T Slot Model II

APL-45	APL-60	APL-80	APL-110	APL-160	APL-200	APL-260
45	60	80	110	160	200	260
3.2	4	4	6	6	6	7
40-100	35~90	35-80	30-60	20-50	20-50	20-40
75	65	65	50	35	35	30
20-80	20-100	25-120	25-160	30-180	30-180	40-200
250	310	340	370	470	470	520
60	75	80	80	100	110	120
400×300×60	500×360×70	560×420×70	650×470×80	700×550×90	850×630×90	950×700×100
850×440×80	900×500×80	1000×550×90	1150×600×110	1250×800×140	1400×820×160	1500×840×180
∅38.1	∅50	∅50	∅50	∅65	∅65	∅65
5.5×4	5.5×4	7.5×4	11×4	15×4	18×4	22×4
Manual operation			Electrical driving			
6	6	6	6	6	6	6
GB(JIS)1class	GB(JIS)1class	GB(JIS)1class	GB(JIS)1class	GB(JIS)1class	GB(JIS)1class	GB(JIS)1class
1575×950×2500	1595×1000×2800	1800×1180×2980	1900×1300×3200	2315×1400×3670	2615×1690×4075	2780×1850×4470
3.8	5.6	6.5	9.6	16	23	32
2.3	3.6	3.6	6.3	10	14	14
50	70	70	80	80	100	100
300×230	350×300	450×310	500×350	650×420	710×480	810×480

APC SERIES



With high rigidity design in machine frame , the machine body is welded of quality steel sheet and treated by tension elimination, improve stability and reliability of precision of the machine.

Functions Features

- With the optimization design ,used high-grade alloy steel, double crank, two wide work center with connection bar structure.
- In order to guarantee the machine running in stable and smooth, adopts the design of symmetrical boards with balancer.
- The precision of mold adjusting up to 0.1mm, safety, reliable and convenient.
- Crank, gear. connect bar are oxidized hardening and milled, having super comprehensive mechanical performance and durable function.
- Used reliable high sensitive clutch/brake and international up-to-date twin electromagnetic valve, overloading protector can guarantee the precision of slider running and stop and safe production of the machine.
- Reasonable structural design, is benefit for automation production and reduce cost,improve efficiency.
- Advanced design principle, low noise, low consumption, low cost , save energy.

Standard Accessories

Name		APC-110		APC-160		APC-200		APC-250	
		V	H	V	H	V	H	V	H
Model									
Capacity	Ton	110		160		200		250	
Rated tonnage point	mm	5	3	6	3	6	3	7	3.5
Stroke	mm	180	110	200	130	250	150	280	170
Stable speed	s.p.m	35-65	50-100	30-55	40-85	25-45	35-70	20-35	30-60
Die height	mm	400	435	450	485	500	550	550	605
Slide adjustment	mm	100		100		120		120	
Bolster area	mm	1800 × 650 × 130		2000 × 760 × 150		2400 × 840 × 170		2700 × 900 × 170	
Slide area	mm	1400 × 500 × 70		1600 × 550 × 70		1850 × 650 × 95		2100 × 700 × 95	
Main motor	kw×P	11 × 4		15 × 4		18.5 × 4		22 × 4	
Presses weight	Ton	14.2		20		27.5		45.5	
Air pressure	kg/cm2	5		5		5		5	
Presses precision		JIS(CNS) 1class							
Die cushion capacity		Two plate & two cylinders							
Capacity	Ton	3.6 × 2		6.3 × 2		10 × 2		14 × 2	
Air pressure	kg/cm2	6		6		6		6	
Stroke	mm	70		70		80		100	
Die cushion work part dimension	mm2	350 × 235 × 2		410 × 260 × 2		540 × 350 × 2		640 × 470 × 2	

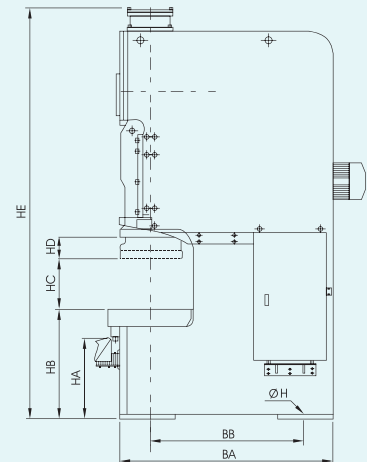
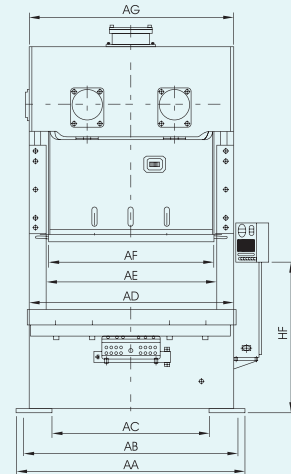
APC SERIES

Standard Accessories

- > High performance dry clutch & brake
- > Standard operating system
- > Operation mode selection/off/inching safety one stroke/continuous
- > Hydraulic overload protector
- > Overrun detector
- > Dual solenoid valve
- > Missfeed detector
- > Motorized slide adjustment
- > Digital die height indicator (unit 0.1mm)
- > Motorized grease pump
- > Total counter, 6 digits
- > Preset counter, 6 digits
- > Maintenance counter, 4 digits
- > Life counter, 6 digits
- > Electronic rotary cam switch (6 spare channel)
- > Air ejector 1/2" one channel
- > Air source receptacle 1/2" two channel
- > Missfeed detection circuit
- > Power receptacle (available only for single phase,
- > 110V power source wiring by user)

Optional Accessories

- > High performance wet clutch & brake
- > Die cushion
- > Vs motor
- > Touch screen devices
- > Safety light curtain
- > Slide knock-out device
- > Main motor reversing circuit
- > Foot switch
- > Safety die block with plug
- > Portable 2-hand push
- > Inverter
- > Anti-vibration amounts
- > Quick die change system
- > Upper die clamper
- > Lower die clamper
- > Die lifter
- > Die arm
- > Anchor bolts & foundation plates
- > Automatic feed equipment
- > NC straightener feed c/w uncoiler(3 in 1)
- > NC roller feeder
- > Staightener c/w uncoiler (2 in 1)
- > Staightene



Specification	APC-110		APC-160		APC-200		APC-250	
Model	V	H	V	H	V	H	V	H
AA	2000		2200		2620		3000	
AB	1900		2080		2460		2800	
AC	1360		1520		1820		2200	
AD	1800		2000		2400		2700	
AE	1510		1660		1990		2220	
AF	1400		1600		1850		2100	
AG	1780		1980		2320		2590	
BA	1745		1940		2235		2545	
BB	1295		1380		1885		2195	
BC	650		760		840		900	
BD	330		385		425		455	
BE	500		550		650		700	
HA	(630)		(730)		(790)		(820)	
HB	830	865	990	1025	1070	1120	1100	1155
HC	400	435	450	485	500	550	550	605
HD	180	110	200	130	250	150	280	170
HE	3059		3709		3849		4304	
HF	1240		1440		1570		1680	
Øh	Ø35		Ø47		Ø54		Ø54	

APE SERIES

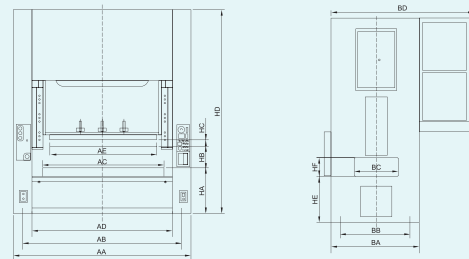


With high rigidity design in machine frame , the machine body is welded of quality steel sheet and treated by tension elimination, improve stability and reliability of precision of the machine.

Functions Features

- Keep the transmission center and machine center in uniformity, guarantee the precision of pressing.
- In order to guarantee the machine running in stable and smooth, adopts the design of symmetrical boards with balancer.
- The precision of mold adjusting up to 0.1mm,safety,reliable and convenient.
- Crank, gear,connect bar are oxidized hardening and milled, having super comprehensive mechanical performance and durable function.
- Used reliable high sensitive clutch/brake and international up-to-date twin electromagnetic valve, overloading protector can guarantee the precision of slider running and stop and safe production of the machine.
- Reasonable structural design, is benefit for automation production and reduce cost ,improve efficiency.
- Advanced design principle, low noise, low consumption, low cost , save energy.

Machine Dimensions



Specification

Name		APE-160		APE-200		APE-250		APE-300		APE-400		APE-500		APE-600	
Model		S	H	S	H	S	H	S	H	S	H	S	H	S	H
Capacity	Ton	160		200		250		300		400		500		600	
Rated tonnage point	mm	6	3	6	3	7	3	7	3	7	3	10	6	10	6
Stroke	mm	180	130	250	150	280	170	300	170	300	170	300	180	300	180
Stroke per minute	s.p.m	30-55	40-85	20-50	35-70	20-40	30-60	20-35	30-50	20-30	20-40	18-25	20-30	15-25	20-30
Die height	mm	450	400	500	450	550	450	550	450	550	450	580	480	600	500
Slide adjustment	mm	100		120		120		120		120		120		120	
Slide area	mm	1600 × 650		1850 × 750		2100 × 900		2100 × 900		2800 × 1000		2900 × 1000		3100 × 1100	
Bolster area	mm	1800 × 760		2200 × 940		2500 × 1000		2500 × 1000		3200 × 1000		3300 × 1200		3500 × 1200	
Side opening	mm	700 × 450		900 × 600		900 × 600		900 × 600		900 × 600		1000 × 750		1100 × 750	
Main motor	Kw×P	15 × 4		18.5 × 4		22 × 4		30 × 4		30 × 4		45 × 4		55 × 4	
Slide adjust device	Kw×P	1 × 4		2 × 4		2 × 4		2 × 4		2 × 4		3 × 4		3 × 4	
Air pressure	kg/cm ²	6		6		6		6		6		6		6	
Presses precision		GB(JIS)1class													

APE SERIES



Standard Accessories

- > High performance dry clutch & brake
- > Standard operating system of kiston
- > Operation mode selection/off/inching safety one stroke/continuous
- > Hydraulic overload protector
- > Overrun detector
- > Dual solenoid valve
- > Missfeed detector
- > Motorized slide adjustment
- > Digital die height indicator (unit 0.1mm)
- > Motorized grease pump
- > Total counter, 6 digits
- > Preset counter, 6 digits
- > Maintenance counter, 4 digits
- > Life counter, 6 digits
- > Electronic rotary cam switch (6 spare channel)
- > Air ejector 1/2" one channel
- > Air source receptacle 1/2" two channel
- > Missfeed detection circuit
- > Power receptacle (available only for single phase, 110V power source wiring by user)

Optional Accessories

- > High performance wet clutch & brake
- > Die cushion
- > Vs motor
- > Touch screen devices
- > Safety light curtain
- > Slide knock-out device
- > Main motor reversing circuit
- > Foot switch
- > Safety die block with plug
- > Portable 2-hand push
- > Inverter
- > Anti-vibration amounts
- > Quick die change system
- > Upper die clamper
- > Lower die clamper
- > Die lifter
- > Die arm
- > Anchor bolts & foundation plates
- > Automatic feed equipment
- > NC straightener feed c/w uncoiler(3 in 1)
- > NC roller feeder
- > Straightener c/w uncoiler (2 in 1)
- > Straightene

Specification	APE-160		APE-200		APE-250		APE-300		APE-400		APE-500		APE-600	
	S	H	S	H	S	H	S	H	S	H	S	H	S	H
AA	2590		3000		3700		3700		4100		4300		4700	
AB	2240		2700		3350		3350		3750		3900		4250	
AC	1800		2200		2500		2500		3200		3300		3500	
AD	1880		2290		2800		2800		3300		3450		3650	
AE	1600		1850		2100		2100		2800		2900		3100	
BA	1400		1750		1800		1800		2100		2300		2550	
BB	1200		1550		1450		1450		1940		2050		2200	
BC	700		900		900		900		900		1000		1100	
BD	2150		2500		2950		2950		3129		3750		3900	
HA	800		900		1000		1000		1200		1200		1200	
HB	450	400	500	450	550	450	550	450	550	450	580	480	600	500
HC	190	130	250	150	280	170	300	170	300	170	300	180	300	180
HD	3400	3300	3750	3600	4250	4040	4400	4170	5195	4965	5870	5620	6100	5870
HF	900		900		1000		1000		1150		1150		1150	
HE	450		600		600		600		600		600		600	

Model	APE-160	APE-200	APE-250	APE-300	APE-400	APE-500	APE-600	Model	A	B
Slide Plate Area(LR × FB)	1600×650	1850×750	2100×900	2200×900	3100×1000	3200×1000	3400×1100	a	22	28
Type of T-Slot	A	B	B	B	B	B	B	b	37	48
Type of T-Slot	6	6	6	6	6	6	6	c	24	28
b6	375	375	450	450	600	600	600	d	16	20
b7	125	125	150	150	200	200	200	R	1	1

APD SERIES



- With high rigidity design in machine frame, the machine body is welded of quality steel sheet and treated by tension elimination, improve stability and reliability of precision of the machine.
- Keep the transmission center and machine center in uniformity, guarantee the precision of pressing.
- In order to guarantee the machine running in stable and smooth, adopts the design of symmetrical boards with balancer.
- The precision of mold adjusting up to 0.1mm, safety, reliable and convenient.
- Crank, gear, connect bar are oxidized hardening and milled, having super comprehensive mechanical performance and durable function.
- Used reliable high sensitive clutch/brake and international up-to-date twin electromagnetic valve, overloading protector can guarantee the precision of slider running and stop and safe production of the machine.
- Reasonable structural design, is benefit for automation production and reduce cost, improve efficiency.
- Advanced design principle, low noise, low consumption, low cost, save energy.

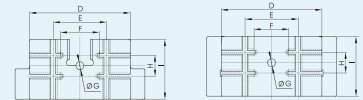
Standard Accessories

- > Inverter
- > Hydraulic over-load protector
- > Slide adjust device
- > Die height indicator
- > Balance device
- > Misfeed detection consent
- > Power supply
- > Rotary cam switch
- > Crank angle indicator
- > Electrical stroke counter
- > Air source receptacle
- > Against over-run safety device
- > Maintenance tool box
- > Operation manual

Optional Accessories

- > Electrical automatic lubrication system
- > Pneumatic die cushion device
- > Preset counter
- > Preset counter
- > Foot switch
- > Quick die change device (Die filler, clamp and die arm sejes)
- > Slide knock-out device
- > Anti-vibration press mount
- > Photo-electronic safety device
- > Feeder
- > Uncoiler
- > Leveler
- > Mechanism hand
- > Die room light
- > Left (right) feeding device
- > PAC 100 counter system
- > Human-computer counter system

Slide



Bolster



MODEL	A	B	C	D	E	F	G	H	I
APD-80	360	180	150	560	300	220	∅ 50	180	420
APD-110	400	200	160	650	300	220	∅ 50	220	470
APD-160	440	220	220	700	300	175	∅ 65	220	550
APD-200	480	240	280	850	420	200	∅ 65	300	630
APD-260	520	260	290	950	420	200	∅ 65	300	700
APD-315	540	280	300	1000	450	200	∅ 65	300	750

Standard Accessories

Name		APD-80		APD-110		APD-160		APD-200		APD-260		APD-315	
		V	H	V	H	V	H	V	H	V	H	V	H
Model		V	H	V	H	V	H	V	H	V	H	V	H
Capacity	Ton	80		110		160		200		260		315	
Rated tonnage point	mm	4	2	6	3	6	3	6	3	7	3.5	7	3.5
Stroke	mm	150	70	180	80	200	90	200	100	250	150	280	170
Die height	mm	340	380	360	410	460	510	460	510	500	550	550	600
Stroke per minute	s.p.m	35-80	80-120	30-60	60-90	20-50	40-70	20-50	50-70	20-40	40-50	20-35	30-50
Slide adjustment	mm	80		80		100		110		120		120	
Slide area	mm	560x420x70		650x470x80		700x550x90		850x630x90		950x700x100		1000x750x110	
Bolster area	mm	760x550x90		900x600x110		980x880x140		1140x820x160		1500x840x180		1600x900x200	
Main motor	kwxp	7.5x4		11x4		15x4		18x4		22x4		30x4	
Slide adjust device	HP	Electrial driving											
Air pressure	kg/cm ²	6		6		6		6		6		6	
Presses dimension	mm	1300x1890x3000		1420x1985x3200		1600x2200x3500		1750x2500x3900		2080x2895x4470		2100x2925x4550	
Presses weight	Ton	7.8		10.5		17.8		25.3		37		42	
Presses precision		GB(JIS)1class											
Die cushion capacity	Ton	3.6		6.3		10		14		14		14	
Stroke	mm	70		80		80		100		100		100	
Die cushion effective area	mm ²	450x310		500x350		650x420		710x480		810x480		810x480	

APF SERIES



Functions Features

- The machine body is welded high quality steel sheet and treated by tension elimination
- The key parts are treated by hard chrome plated/nitrogen
- Adopted well known controller/driving unit/electromagnetism clutch/equipments,bearing etc
- International technology class for press machine, measures machine specification
- High quality& high response multi –function processor
- High memory /program with specialized design
- Shift driving with high integration multishaft/spreading automatic equipments
- LCD man-machine interface/high frequency response control /Connection terminalof international website & USB

Standard Accessories

- > Overload protector
- > motorized slide adjusting device
- > digital die height indicator(unit:0.1mm)
- > Couter Balancer
- > Rotary Cam Switch
- > Crank Angle Indicator
- > Re-circulation Lubrication Device
- > Electromagnetic Counter
- > Over Run Proiector
- > PLC Controller
- > T-type Operation Stand
- > Air Ejector
- > Air Source Receptacle
- > Indepence Electric Control Cabinet
- > Service Tools and Tools Kit

Optional Accessories

- > Die Cushion
- > Slide Knockout Device
- > Die Light
- > Main Motor Reversing Circuit
- > Photo Electri Safety Device
- > Safety Block With Plug
- > Preset Counter
- > Load Monitor
- > Receptacle for Misfeed Detecting Device
- > Inverter
- > Anchor Bolts、 Plate & Foundation Plates
- > Safety Guard & Ladder
- > Power Receptacle
- > Quick Die Change Device

The advance technical optimized structure of machine

Standard Accessories

Name		APF-110		APF-160		APF-200		APF-260		APF-300		APF-400		APF-500	APF-600
		V	H	V	H	V	H	V	H	V	H	V	H	V	V
Model															
Capacity	ton	110		160		200		260		300		400		500	600
Rated tonnage point	mm	6	3	6	3	6	3	7	3.5	7	3.5	9	4.5	10	13
Stroke	mm	180	80	200	90	200	100	250	150	300	170	300	200	250	250
Speed changing	s.p.m	30~60	60~90	20~50	40~70	20~50	50~70	20~40	40~50	20~40	35~50	15~25	20~35	20~30	15~20
Stable speed	s.p.m	50		35		35		30		30		20		20	20
Die height	mm	360	410	460	510	460	510	500	550	550	615	550	600	550	550
Slide adjustment	mm	80		100		110		120		120		150		120	120
Slide area	mm	1000x550x70		1100x600x90		1200x650x90		1300x700x100		1400x800x110		1500x850x110		1400x800	1400x1200
Bolster area	mm	1100x600x110		1200x800x140		1300x820x160		1400x840x180		1500x950x200		1600x1000x200		1500x1000	1700x1300
Side opening	mm	700x500		850x600		880x650		900x700		1000x750		1000x750		900x800	1000x900
Main moter	kw x p	11x4		15x4		18x4		22x4		30x4		40x4		55x4	75x4
Slide adjusting moter	kw x p	0.4x4		0.75x4		0.75x4		1.5x4		1.5x4		2.2x4		3x4	3x4
Air pressure	kg/cm ²	6	6	6	6	6	6	6	6	6	6	6	6	6	6
Presses precision		GB/T23280-2009 [JIS1]													

Hydraulic Press



For plastic, form products, it could put heating facilities on table & bottom surface of ram which is controlled by PID & DRO.



Application of machine

The Press composed of main body and control devices which respectively formed with frame, main cylinder, knock-out cylinder, hydraulic system and drive mechanism, lower and upper limit switches pipe lines, electrical control cabinet and etc.

Drive mechanism includes oil tank, high pressure pumps, low pressure control sytem, valves, Electrical control system is designed according to the working procedure of hydraulic principle. By preset, sequential operation can be achieved by drive mechanism via pumps, cylindres, valves, tank and pipe lines.

The press is applicable to compression of plastic materials, For example, powder and plastics products forming and heat/cool metal extrusion, metal sheet drawing, stamping,bending, edge-folding, straightening, depressed mounting and etc.

Independent drive structures and electrical devices insure reliable operation with centered control buttons. Adjustment, manual operation and semi-automatic operation, three modes are provided respectively for your choice.

The working pressure, pressing speed, unload-descending speed and decelerated pressing speed can be respectively adjusted in requirements.

By preset, knock-out, non-knock-out and drawing can be taken out with pressure-dependtent or distance-dependent movement of die. In the case of pressure-dependent movement, the main cylinder of YAN32 type press initiates pressure-holding, time delay and automatic return.

Specification	Model	Unit	11601	11602	11603	11604	11605	11606	11607	11608	11609	11610	11611	11612	11613	11614	11615
			YAN32-40	YAN32-63	YAN32-100	YAN32-100A	YAN32-160	YAN32-200	YAN32-315	YAN32-400	YAN32-500	YAN32-500C	YAN32-630	YAN32-800	YAN32-1000	YAN32-1250	YAN32-1600
Nominal force		KN	400	630	1000	1000	1600	2000	3150	4000	5000	5000	6300	8000	10000	12500	16000
Knock-out force		KN	120	190	190	190	240	400	630	630	1000	1000	1000	1600	2000	2000	2000
Max. working hydraulic pressure		Mpa	25	25	25	25	25	25	25	25	25	25	25	25	25	25	25
Slide-stroke		mm	450	500	600	600	700	700	800	800	900	900	900	800	900	900	900
Knock-out stroke		mm	150	200	200	200	200	250	300	300	350	350	350	450	450	450	450
Max. Daylight		mm	700	800	900	900	1050	1100	1250	1300	1500	1500	1600	1600	1600	1600	1600
Slide speed	Descent	mm/s	40	100	120	180	120	100	100	100	100	100	100	80	80	80	80
	Working	mm/s	15	20	14	14	10	12	5	4	10	10	6	8	10	6-10	6-10
	Return	mm/s	50	60	47	60	60	52	60	60	60	60	50	50	50	45	50
Effective area of table	Left-right	mm	500	560	680	500	1000	1000	1200	1200	1400	2370	1500	1500	1530	1700	2000
	Front-back	mm	460	500	580	460	800	900	1200	1200	1400	1450	1500	1400	1600	1600	1600
Overall Size	Left-right	mm	2000	2400	2500	2000	2700	2825	3235	3235	4060	6500	4200	4800	5250	5250	5800
	Front-back	mm	1300	1400	1500	1300	1700	2060	2200	2200	3525	3800	4200	4000	3800	3800	4000
	Height above ground	mm	2600	3100	2950	2600	3400	3725	4295	4500	4995	4740	5600	6000	5800	6000	6200
Total motor power		kw	4	7.5	7.5	4	7.5	15	22	22	45	45	45	60	75.5	75.5	75.5
Weight		kg	2000	3000	4000	2000	6000	11000	14000	22000	25000	38000	34000	40000	48000	60000	82000

Double Action Hydraulic Press



Application of machine

Suitable for all drawing, bending, forming, stamping and flanging processes.

Four column type or straight side structure available on request and both structures are calculated by finite elements methods.

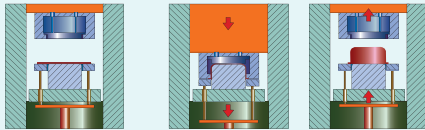
The four column type press featuring compact arrangement and high price performance ratio, straight side structure press is with much high rigidity and precision, also eccentric load resistance performance.

Cartridge valve integrated unit equipped in hydraulic control system, with high reliability, durability. Oil leakage is avoided by means of proper piping and minimum hydraulic impact design.

Electrical system controlled by imported PLC unit, with the features of compact, sensitivity, reliability and flexibility; reliable actions and easy maintenance are the features of the system based on relay control.

Three operation modes are provided: Adjustment, Two-hand/single circle and Auto continuous (equipped with robot) operations.

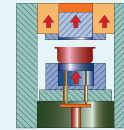
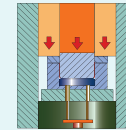
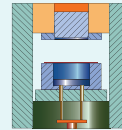
Various actions such as Preset Stroke Forming or Preset Pressure Forming process, cushion actions including Rest, Ejection or Blank holding can be selected on control panel.



Item		Unit	11701	11702	11708	11712	11716	11717	11718	11719
			YAN27	YAN27	YAN27	YAN27	YAN27	YAN27	YAN27	YAN27
			-63	-100	-200	-315	-500(1)	-500(2)	-630	-1000
Nominal Force		KN	630	1000	2000	3150	5000	5000	6300	10000
Return Force		KN	180	260	480	630	1000	1000	1250	1250
Cushion Force		KN	200	300	600	1250	1600	1600	2500	3000
Max. pressure of liquid		MPa	25	25	25	25	25	25	25	25
Stroke	Slide	mm	450	700	710	800	900	900	1000	1400
	Cushion	mm	180	300	250	300	350	300	400	350
Max. Daylight		mm	900	1000	1120	1250	1500	1500	1600	2300
Slide speed	Descent	mm/s	120	150	100	100	140	100	100	100
	Pressing	mm/s	11-15	20	6-15	6-12	5-15	8	6-14	13
	Return	mm/s	130	80	80	60	70	90	65	60
Table Dimensions	L-R	mm	560	720	1000	1250	1400	2200	2600	2500
	F-B	mm	500	580	900	1120	1400	1400	1750	2000
Cushion Dimensions	L-R	mm	310	470	800	900	1100	1700	1950	2000
	F-B	mm	300	430	630	800	1100	900	1200	1500
Height of table above Floor		mm	750	750	500	600	500	500	500	0
Total Power		KW	11	11	22	22	45	45	45	90
Total Weight		Kg	4200	6500	14200	18000	29500	41000	77000	102000
Overall Dimensions	L-R	mm	1420	1960	2698	3018	4120	4750	5222	5800
	F-B	mm	1265	1620	2530	2530	3600	3800	3785	6050
	Height above Floor	mm	2698	3250	4110	4560	5545	5545	5970	8098
	Depth below Floor	mm		300	800	1000	1200	1000	1400	2400

Special size as per customers' request

Hydraulic Deep Drawing Press



Item		Unit	11801	11802	11802-1	11803	11803-1	11805	11806
			YAN28 -63/100	YAN28 -100/150	YAN28 -150/200	YAN28 -200/300	YAN28 -220/315	YAN28 -315/400	YAN28 -400/600
Nominal Force		kN	1000	1500	2000	3000	3150	4000	6000
Drawing Force		kN	630	1000	150	2000	2200	3150	4000
Knock out Force		kN	190	190	400	400	400	800	630
Blank-holder Force		kN	300	500	630	800	1000	1000	2000
Max.pressure of liquid		MPa	25	25	25	25	25	25	25
Stroke of drawing slide		mm	600	600	700	800	800	800	800
Stroke of Bland-holder slide		mm	250	250	250	400	350	400	720
Stroke of knock out cylider		mm	200	250	250	350	350	-	400
Daylight of drawing slide		mm	1000	1200	1300	1400	1560	1500	2190
Daylight of Blank holder slide		mm	600	750	900	720	820	1000	1300
Table area		mm ²	720 x 580	800 x 800	1000 x 900	980 x 900	1120 x 1120	1260 x 1200	1250 x 1250
Main Ram	Rapid down	mm/s	100	100	100	100	100	100	100
	Slow down	mm/s	20	20	20	20	20	20	16
	Pressing	mm/s	10~20	10~20	10~20	10~20	10~20	10	10~16
	Return	mm/s	100	100	100	135	100	100	100
Drawing Slide	Knock-out	mm/s	95	95	60	60	90	90	100
	Return	mm/s	220	220	180	180	200	200	200
Overall dimensions of machine	L-R	mm	2500	2300	3800	3800	3800	4500	4300
	F-B	mm	1500	900	1800	1800	1800	2800	2315
	Height above floor	mm	3200	3600	4400	4600	4400	4600	5240
Total power		kW	11	15	22	37	37	37	37
Total weight		kg	6000	8000	10000	13000	15000	17000	41000
Old model			YQ28-63/100	YQ28-100/150	YQ28-150/200	YQ28-200/300	YQ28-220/315	YQ28-315/400	YQ28-400/600