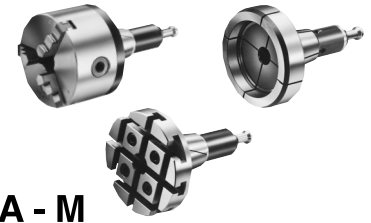


MULTI-SPINDLE TILTING ROTARY TABLE



5AX-4MT-120

- Tilting rotary table with Multi-Spindle
- Various attachment for fixing work piece



- Explanation of the Code No. (Example)

5AX - 2MT - 105 - 120 F A - M

- No Letter: without motor M: with motor
- No Letter: DC servo motor A: AC servo motor
- Motor Maker P.37
- WA21: with NIKKEN α 21 controllers for both axes
- DA21: with NIKKEN α 21 controller for tilting axis
- F:FANUC M:MELDAS
- Y:YASNAC OSP:OSP T:TOSNUC N:NEC
- S:SANYO Z:SIEMENS I:INDRAMAT
- H:HEIDENHAIN X:ISOFLEX SEM:SEM B:BOSCH
- No Letter: Tilting axis right hand side
- L: Tilting axis left hand side
- Pitch (Centre distance)
- Diameter of Table 105, 120
- Number of spindles 2, 3, 4
- 5AX-: Tilting rotary table

() : High Speed type Please contact us.

Specifications

Item / Code No.		5AX-2MT-105		5AX-4MT-120	
Diameter of Table	ϕ mm	105		105	
Diameter of Spindle Hole	ϕ mm	$\phi 60H7 \times \phi 30$		$\phi 60 \times \phi 30$	
Number of spindles (Pitch)	mm	120		120	
Centre Height (90°)	mm	175		235	
Table Height in Horizontal Position (0°)	mm	250		300	
Width of T Slot	mm	$16^{+0.018}_0$		$16^{+0.018}_0$	
Axis		Rotary	Tilting (0°~105°)	Rotary	Tilting (-110°~+110°)
Clamping System	Air 0.5MPa Hyd. 3.5MPa	Air	Air	Hyd.	Hyd.
Clamping Torque	N·m	147	147	147	343
Table Inertia at Motor Shaft ($\frac{GD^2}{4}$)	kg·m ² ×10 ⁻³	0.13	0.13	0.2	0.48
Servo Motor	min ⁻¹	$\alpha 2 / 5000i \cdot 2000$	$\alpha 2 / 5000i \cdot 2000$	$\alpha 8 / 3000i \cdot 2000$	$\alpha 4 / 4000i \cdot 2000$
MIN. Increment		0.001°	0.001°	0.001°	0.001°
Rotation Speed	min ⁻¹	22.2	11.1	11.1 (44.4)	16.6
Total Reduction Ratio		1/90	1/180	1/180 (1/45)	1/120
Indexing Accuracy	sec	±30	60	±45	±30
Net Weight	kg	115		230	
MAX. Work Load on the Table	0° to 30°	15 kg		25 kg	
	30° to 90°	10 kg		15 kg	
MAX. Thrust Load applicable on the Table	Tilting Angle = 0°	3920 N		3920 N	
	Tilting Angle = 0°	L=60mm F ₁ =784N		L=60mm F=2858N	
	Tilting Angle = 90°	L ₁ =0mm F ₁ =653N L ₂ =100mm F ₂ =490N		L ₁ =0mm F ₁ =1380N L ₂ =100mm F ₂ =1040N	
	Tilting Angle = 90°	49 N·m		49 N·m	
MAX. Work Inertia		0.014 ($\frac{GD^2}{4}$) kg·m ²		0.021 ($\frac{GD^2}{4}$) kg·m ²	
Driving Torque		36 N·m		144 N·m	

- ★ Min. pitch between spindles 105:120mm. If you need different pitch, please contact with us.
- ★ 4 spindle rotary table to suit 2 Spindle M/C is also available, please contact with us.
- ★ Max numbers of spindles 105:4 spindles.
- ★ The supplied hydraulic pressure is 3.5MPa for hydraulic clamping system.
- ★ Range of tilting angle (0°~105° or ±110°) can be expanded as an option. Please contact with us.

