

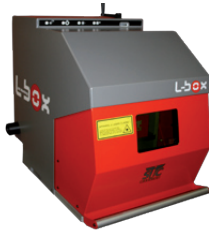
# MARKING & TRACEABILITY SOLUTIONS



## Technology & Range

### LASER

WORKSTATIONS



#### L-Box

##### USER - FRIENDLY

Ergonomically Designed  
Working Area:  
370 x 450 mm / 14.5 x 17.7 in



#### XL-Box

##### HIGH VOLUME, HIGH EFFICIENCY

Pneumatic Door and Motorized Z-Column  
Working area:  
570 x 564 mm / 22.4 x 22.2 in

INTEGRATED



#### i103 L-G

##### HIGH SPEED & HIGH CONTRAST MARKING

Seamless integration  
10, 20, or 50 Watt Sources  
Marking Field:  
100 x 100 mm / 3.9 x 3.9 inches



#### Controller

##### FIBER UNIT

Controlled with SIC Laser PC software  
Integrated safety loop



Datamatrix on Raw Foundry



Logo on Painted Part



Circular Marking on Steel



Marking on Plastics

### NP DOT PEEN MARKING

COLUMN MOUNTED



#### ec1

##### SIMPLE & COMPACT

Marking Window:  
• 120 x 100 mm / 4.7 x 3.9 in



#### e10 c153 / c153 za / c303

##### ROBUST & COMPLETE

Motorized or Manual Column  
Marking Windows:  
• 160 x 100 mm / 6.3 x 3.9 in (c153/c153 za)  
• 300 x 150 mm / 11.8 x 5.9 in (c303)

PORTABLE



#### e1 p63c / p123

##### LIGHTWEIGHT & COMPACT

Marking Windows:  
• 60 x 25 mm / 2.4 x 1 in (p63c)  
• 120 x 40 mm / 4.7 x 1 in (p123)



#### e10 p63 / p123

##### ADAPTABLE & FUNCTIONAL

Marking Windows:  
• 60 x 25 mm (p63)  
• 120 x 25 mm (p123)

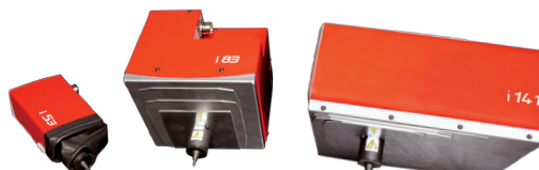


#### e-mark / e-mark XL

##### CORDLESS MARKING SYSTEM

Marking Window:  
• 60 x 25 mm / 2.4 x 1 in  
• 120 x 40 mm / 4.72 x 1.57 in

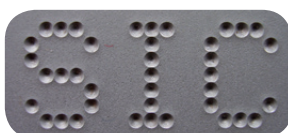
INTEGRATED



#### e10 R i53 / i83 / i141

##### HIGH SPEED & COMPACT

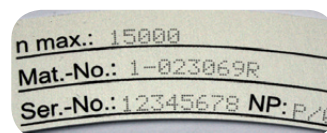
Easy to Integrate  
Marking Windows :  
• 50 x 20 mm / 2 x 0.8 in (i53)  
• 80 x 70 mm / 3.1 x 2.7 in (i83)  
• 150 x 100 mm / 5.9 x 3.9 in (i141)



Deep Marking



Circular Marking



ID Tag



Datamatrix on Aluminium



# SCRIBING

## INTEGRATED



e10 R i63 s / i113 s

### COMPACT & SILENT

Aesthetic Marking

Marking Windows:

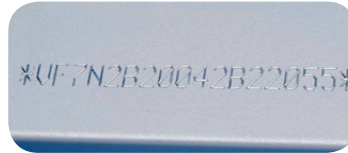
- 60 x 30 mm / 2.4 x 1.7 in (i63s)
- 110 x 60 mm / 4.3 x 2.4 in (i113s)



Deep Marking on Steel



Radial Marking



Marking on U-Shaped Bar

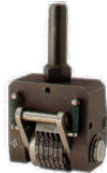


Light Scribing



# CONVENTIONAL MARKING

## IMPACT MARKING & STAMPS



- Steel Type
- Type holders
- Punches
- Numbering Heads
- Presses



# CUSTOM SOLUTIONS

## MANY APPLICATIONS



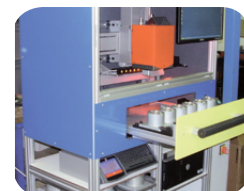
VIN Marking



Custom Laser Station



Marking System with Swing Plate



Data matrix marking on parts loaded into a drawer

### ENGINEERING

- Mechanical
- Software development
- Process automation
- Industrial vision

## Complete Traceability: Reading Systems



# VISION

## IDENTIFICATION & READING SYSTEMS



Handheld reader



Data matrix reader



Dedicated Vision System



Traceability Software



www.sic-marking.com

(2015/03) SIC Marking® reserves the right to modify equipment specifications at any time - This document is not contractual.

MARKING & TRACEABILITY SOLUTIONS