

01010111101
01001

0101011111
101011000110101
100110100101101
01011110101100011
0101101101001011
0101011110110110
10101111011010
10001101011011
01011000

01

00

01 001011 1

00

011 1

01010111101
010

01 0010

0 1

1 111
0

0

01

1 111
001

01

01001011 1

01010111101

0

1

1 111

0

01001

0

01

01

00

01 001011 1

1 111

00

01 001011 1

01010111101

01 001011 1

01001

01010111101

01001

01 001011 1

1 111
001

01

0

1

1 111

0

01 001011 1

0

1 1 1 1

01

01 001011 1

01010111101

01 001011 1



Multiax
headquarters
are located in
North East
Italy



WELCOME TO MULTIAX

HISTORY LANDMARKS

The company was founded in 1995 with the name Heian Europe, a joint venture of an Italian CNC machine distributor with a Japanese manufacturer of CNC machines to produce a line of innovative and advanced CNC machines built in Italy.

In 1998 the company passed entirely in the hands of Italian entrepreneurs who changed the name into Multiax and, in later stages, expanded its activity opening a subsidiary in the USA in 2001. Many machines have been developed and produced until July 2010, when the ownership of Multiax was taken over by U.S. investors after the economic crisis of 2008 with the enthusiastic support of Italian partners and a team of experienced specialists.

Our greater commitment is aimed at emerging markets and rapidly expanding sectors, such as aerospace, automotive, energy, building and transport, where the high value of Multiax machines is more appreciated

PRODUCTION / View from the deck

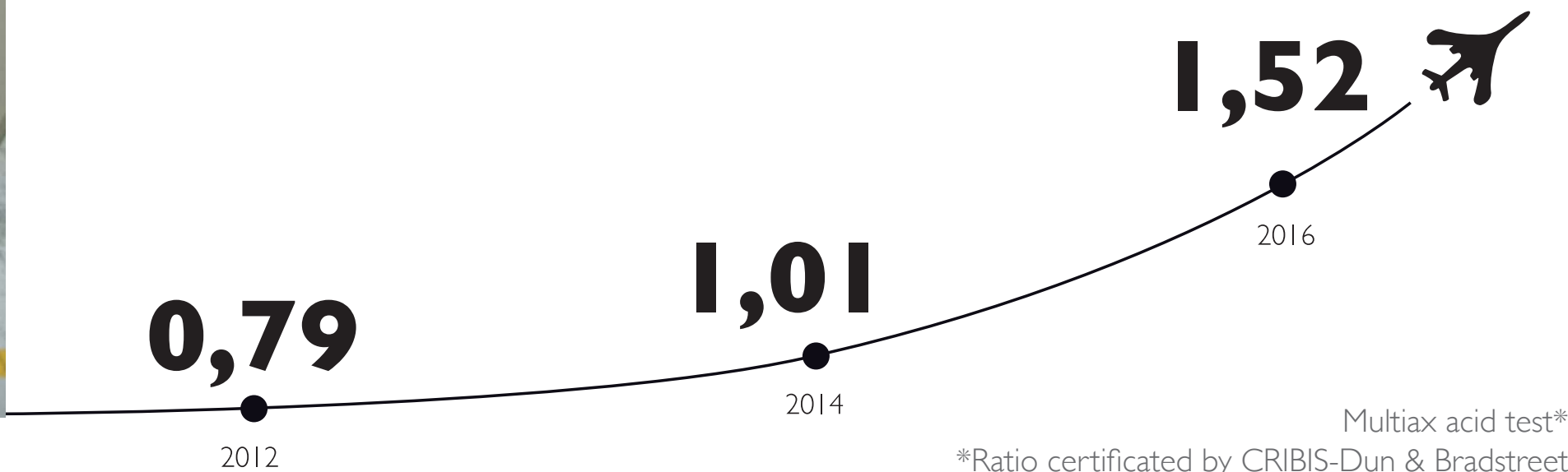


Multiax now has more than 220 CNC machining centers operating in the world, from China to Chile, from Finland to Australia, if not mention the U.S., Mexico, France, Germany and UK to name a few Countries where are present with our products, all customized according to different needs, all operational and serviced professionally.

FACTORY AND OFFICES

The company headquarters are located in North East Italy, in one new industrial facility of about 47.000 ft2 (4.400 m2), including a two-floors office building. The main production facility is equipped with two overhead travelling cranes and different machines for mechanical works, painting measurements, calibrations and tests.

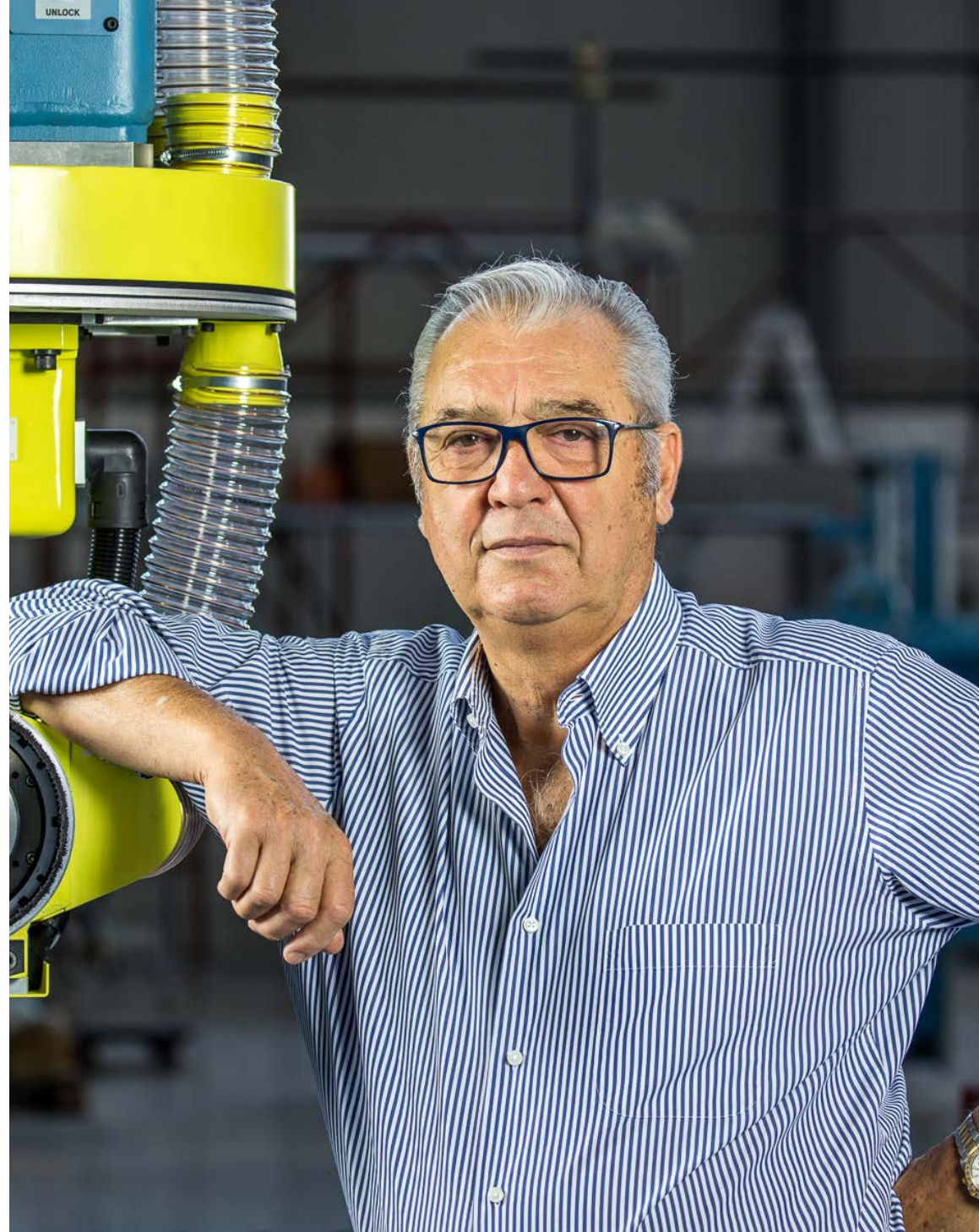
The production process consists mainly in assembling and testing prototype devices engineered and designed inside the company and outsourced to a skilled group of specialised suppliers.





MOULDED TO CHALLENGE

Leading the way in custom designed CNC Machining Centers, Multi-ax's philosophy has always been aware of our customer's needs and able to understand the objectives of management providing the latest competences, technologies and solutions to keep your company at the edge of competition in today's challenging markets.



MARVI CHIAROTTIN / CEO Multiax

Smart managers for smart customers

THE TEAM

A smart team is much more than “human resources”. In Multiax, managers and engineers share their competences and knowledge to take over every step of the process in order to create customised solutions.

In quite two decades, they have collected a wide range of case histories, developing CNC machines for plastic, composite, aluminum at the highest level of performance.

MULTIAX MANAGER TEAM
Loris De Antoni / CNC Applications
Marco Nascimben / Design & Mechanical Engineering
Matteo Chiarottin / Accounting & Finance
Diego Zille / Factory Director



THE RANGE OF SERVICES

Multiax services include a series of activities to guarantee customer satisfaction:

- full information to use of the machine at its maximum potentialities;
- tailored training courses for customers and partners from basic to the best practices;
- optimised machine programming;
- training and support for the whole machine life cycle.

THE PURCHASING POLICY

Our purchasing policy aims for the excellence.

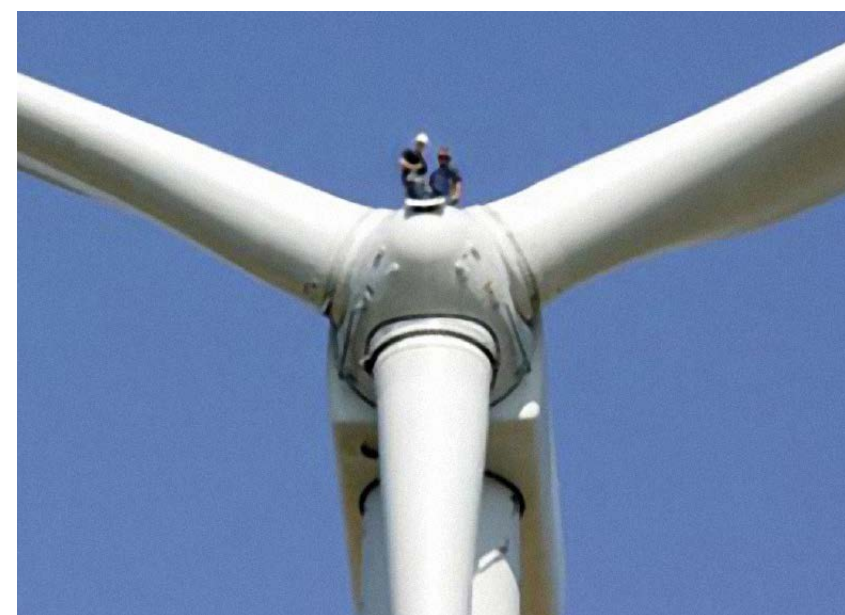
To achieve this, Multiax focuses on:

- requiring the highest levels of performance from suppliers with regard to quality, costs and delivery times;
- asking respect of the required specifications;
- continuous update and tracking of the performances of the suppliers;
- support to partners to help optimise performance at every stage of the supply chain;
- close relation with outsourcers and suppliers;
- cross-exchanged support;
- sharing of know-how with suppliers;
- continuous process innovation and improvements with suppliers and partners;
- clear and shared procedures.



ITALIANS DO IT BETTER

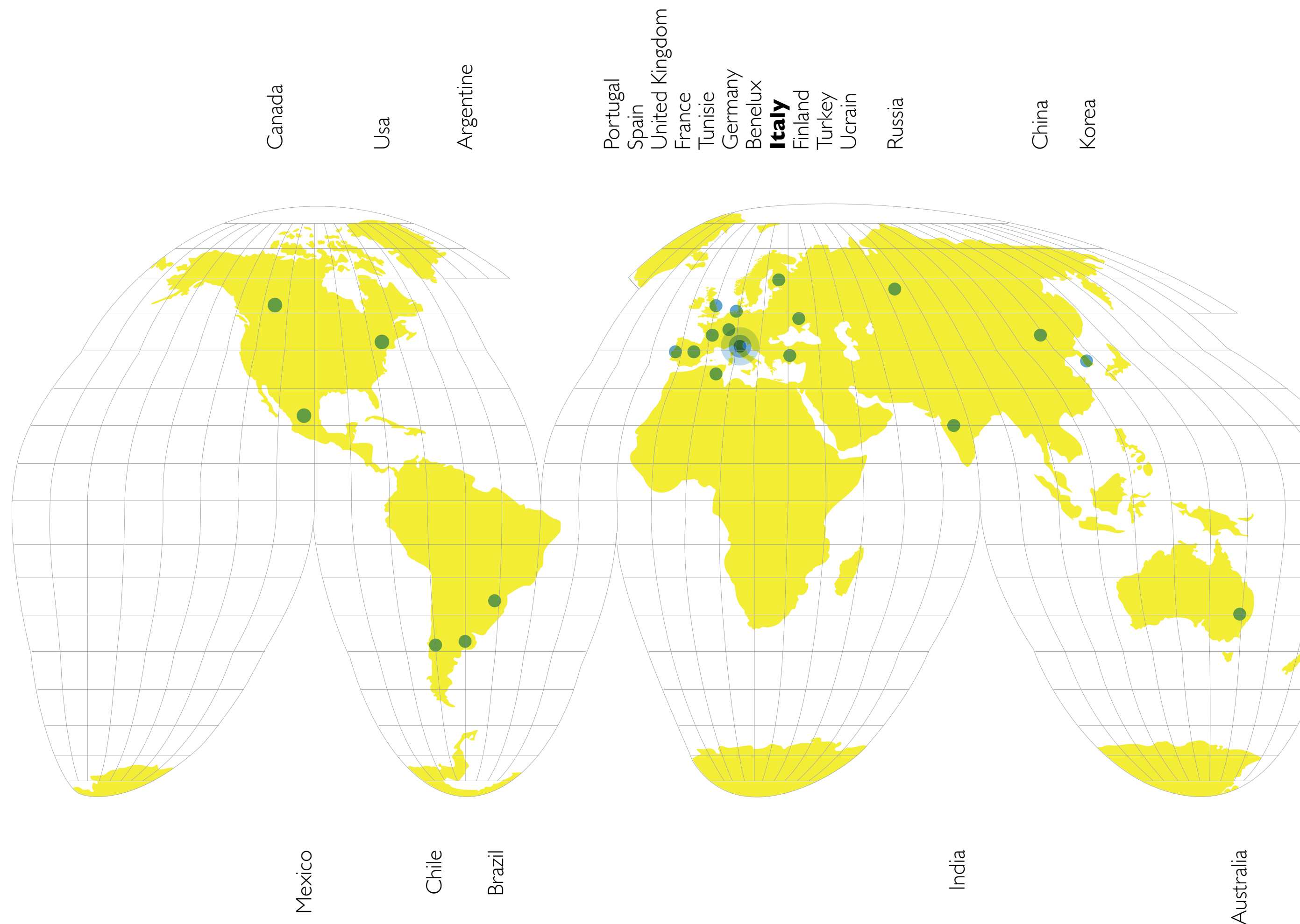
Innate Italian skill for craftsmanship, engineering and design along with true capability to establish long lasting relationships, make Multiax the perfect partner for international customers, assuring them with the maximum technical and economic success of the investments. A real value higher than the standard solutions available worldwide.



Aerospace
Automotive
Prototype + Model Makers
Wind Energy
Boat Builders
Amusement + Entertainment
Furniture
Thermoforming Industry

Over 220 customers worldwide use Multi-ax CNC machines: from Korea to Chile, from Finland to Canada and Australia in different industries like aerospace, marine and wind energy

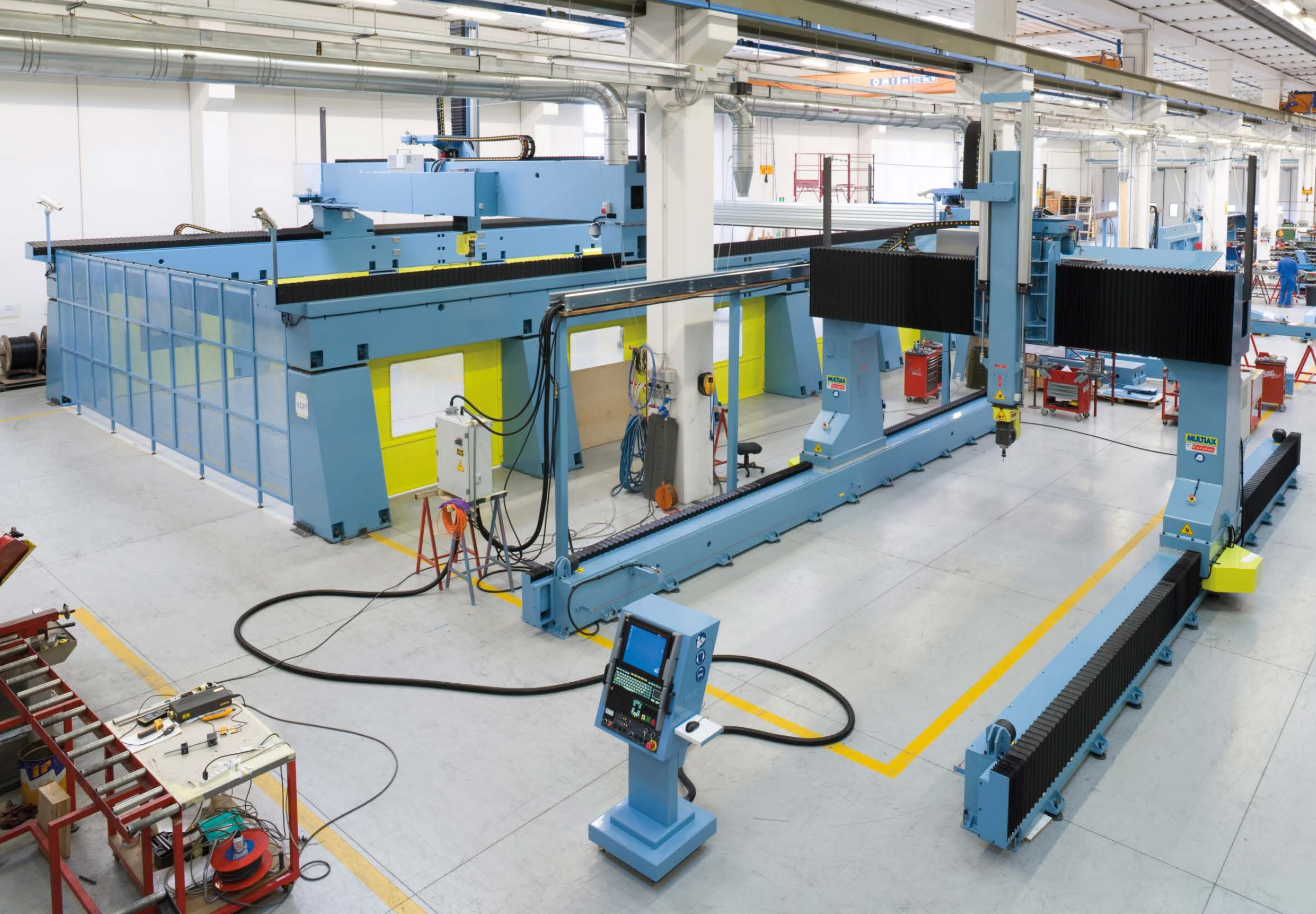
Multi-ax has been manufacturing CNC Machining Centers for over two decades. Today, Multi-ax is a world leader in designing, engineering and manufacturing CNC Machining centres associated with high accuracy, innovative engineering and total reliability easily available worldwide: we install components and our customers can rely on our direct or our partners servicing facilities with wide choice of spare parts and very fast reaction times in case of need.





Far beyond selling a machine, Multiax rather provides means for a more profitable process, where the machine is seen as a means, not an end.

Among the choice of integrative devices: wide range of spindles for powerful material removal and high speed accurate finish, high-quality components (Siemens, Fanuc, CNCs, high standard motion systems, LM guides, electric, pneumatic, hydraulic components), laser calibration, tool life management, toolsetter, radio probes, OMV software, VDO camera networks, dust/chip extraction systems, backlash, temperature and other error compensations, protections from abrasive dust or chips, customized PLC.



Moving Bridges
Fix Bridges
Special Machines

EFFICIENCY
EXTRALARGE

MultiAx Heavy Duty engineering culture and its great attention to details all through the company processes lead to:

- 24/7 machine use, always keeping the requested performances
- reliability for long time
- reduced average service costs.

L SERIES: MOVING BRIDGE > GANTRIES WITH RAILS ON THE FLOOR



Floor rails moving gantries. The modular design of the L series makes it precisely addressed to industries requiring a large work envelop along with a high degree of precision such as machining moulds for the automotive, wind energy and marine industries, or large composite parts in aerospace. Beyond milling, it's well suited

for hybrid configurations, to support other heads for CNC automated operations like insert of rivets, or extrusion of pastes. To clamp the parts, there are different types of standard and special beds available (T-slots, Vacuum, Hybrid configurations, etc.).



T SERIES: MOVING BRIDGE > LONGITUDINAL GANTRIES



The perfect closed cell CNC 5 axis machining center. Multi-ax has developed a 5 Axis machining center for fast and accurate machining of complex 3D surfaces which is generally used in the plastic and composites industry. The T Model is productive, reliable, and easy to use. It is built to exceed the customer's expectations. This is possible thanks to the rigid construction frame and

the mechanical components which lead to greater axis squareness, speed and positioning accuracies. The mechanical structure has been tested with Finite Element Analysis software to simulate extreme stress and heavy usage and also to check the base sturdiness.



P SERIES: MOVING BRIDGE > TRASVERSAL GANTRIES

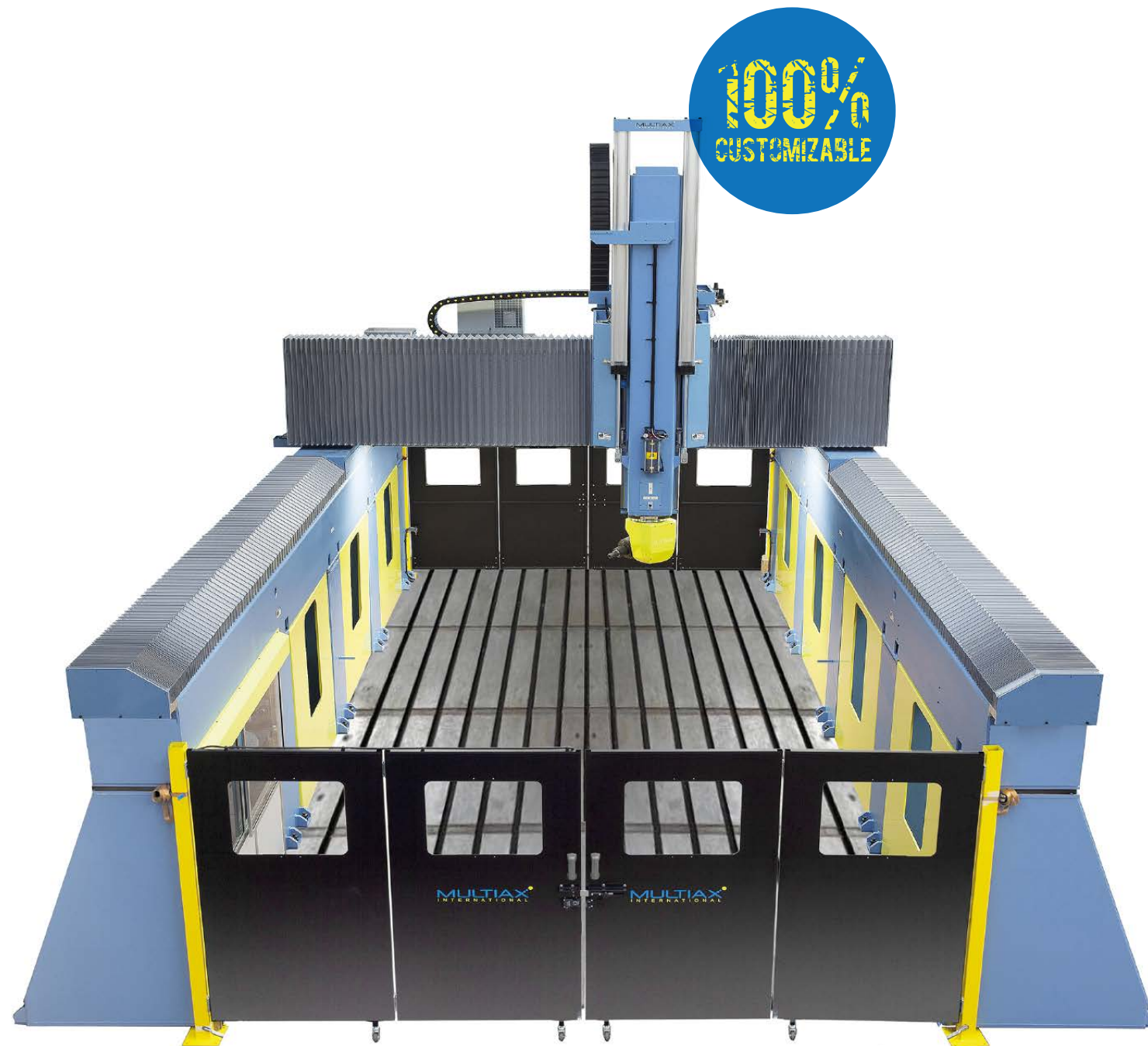
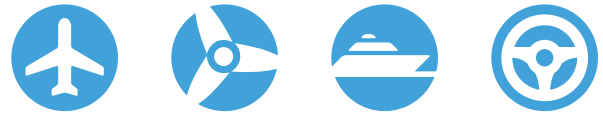


The smartest closed cell CNC 5 axis machining center for composites is compact, enclosed, with a moving bridge design, engineered to perform highly accurate 3D operations. The bridge is moved with a twin master/slave drive configuration and there

are many options available to make possible a wide range of configurations to meet very specific requirements.



A SERIES: MOVING BRIDGE > GANTRIES WITH HIGH SHOULDERS



Heavy Duty closed structure, high rail gantries for large work envelopes. This massive suspended gantry 5-Axis CNC machine is ideal for machining large cubic size work pieces. Most common automated CNC operations include milling, cutting, drilling, countersinking, rivet and

fasteners applications, etc. The moving bridge structure with a wide range of optional components, allows the user to machine various sizes of large work pieces, while ensuring high cutting speeds, high precision and a smooth surface finish.

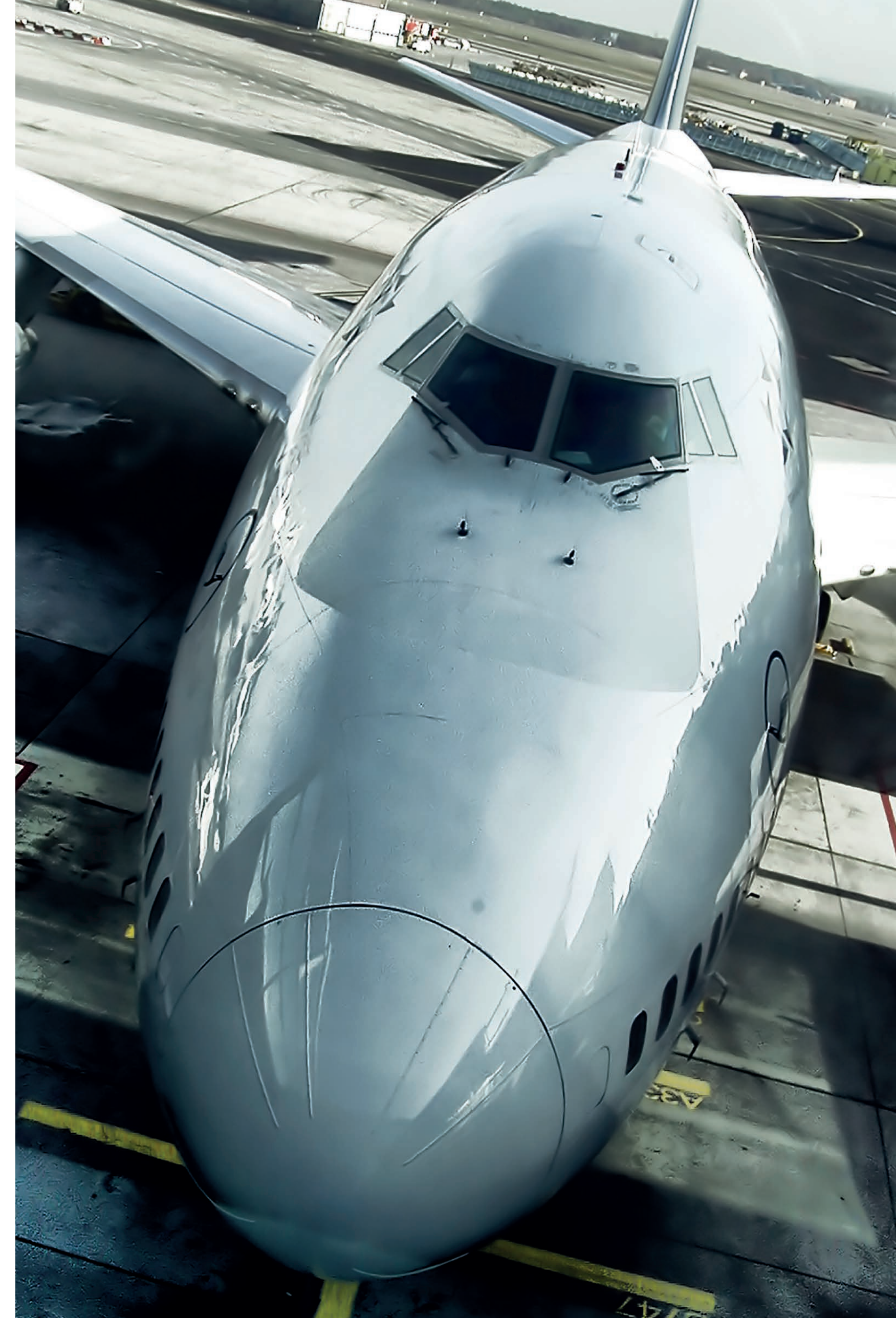


K SERIES: MOVING BRIDGE > TRASVERSAL HD GANTRIES



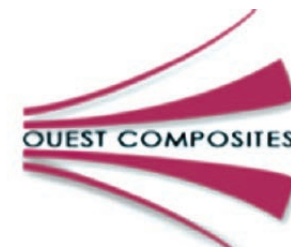
Compact, yet highly powerful, precise and versatile 5-axis CNC milling and machining center mounted on a monobloc basement. Its welded and reinforced, stress relieved steel structure is designed for heavy-duty operations, and rigorously FEM analyzed to ensure the dimensional stability and rigidity for the most demanding requirements.

Thanks to modular engineering, there is a wide choice through different versions with different type of guides, different number of guide ways and carriages, alternative arrangement of transmission ram-in ram Z ram arrangement, different spindles and heads, including torque motors.



REFERENCES

Multi-ax CNC Machines are actually used by:





www.multiax.com

MULTIAX INTERNATIONAL CNC S.R.L.

Viale Europa, 11 • 33070
Brugnera (PN) • Italy
Ph: +39 0434 598151
Fax: 39 0434 598175
info@multiax.com

MULTIAX AMERICA Inc.

3000 Remico St. SW
Grandville, MI 49418 • USA
Ph: +1 616.534.4530
Fax: +1 616.534.4570
edg@multiaxamerica.com