



TAIWAN PRO

Stamping Technology

PRECISION
HIGH-SPEED PRESS



Absolute Precision • Peak Performance



About Us

MING XU established since 1993, is a wholly-owned Taiwanese firm that specializes in design and manufacturing of precision high-speed presses. Headquartered in Dongguan China, our plant covers of 10,000m² and we possess advanced machining equipment such as CNC lathe, CNC milling machine, CNC boring machine, 5-face machining centre, vibration instrument and many other machining facilities. We focus on design and manufacture an array of precision high-speed presses, stamping tonnage range from 25 tons to 400 tons which meet the modern industry needs and are safe, reliable, long life and competitive in the global market.

After years of rapid development, now has a batch of industry elite and outstanding technicians, in which has more than 20 senior engineers and Taiwan top universities graduate. We have developed an optimized organisational structure from R&D, machining operations to production and believed that people-oriented management could drive a positive working environment and ignite motivation among co-workers in the company.

"Technology Innovation, Optimum Performance, Excellent Quality, Intimate Service, On Time Delivery and Value Creation" are the quality management key guiding principles of the company that strive to maintain peak performance, new creation and improved solutions, leading us becomes one of the top leaders in China stamping technology.

Discover our comprehensive sales & service networks which respectively located in Zhu-San-Jiao district, Chang-San-Jiao district, Bohai sea district, Jiang-Zhe-Hu district and Southwest region so that we committed to achieving customer service excellent within 24 hours.

Our presses currently marketing among Beijing, Tianjin, Shanghai, Shandong, Hebei, Henan, Shaanxi, Anhui, Jiangsu, Zhejiang, Hubei, Jiangxi, Sichuan, Chongqing, Guangdong, Guangxi, Fujian, Inner Mongolia, Taiwan and other provinces and municipalities.

Moreover, we export machine to South Asia, Southeast Asia and Central Asia, which has driven this change to our global network to provide the level of service these clients demand.

We adhere to "Sincerity, Dedication, Pragmatic, Innovation, and Excellence" that move towards our brilliant and glorious future.

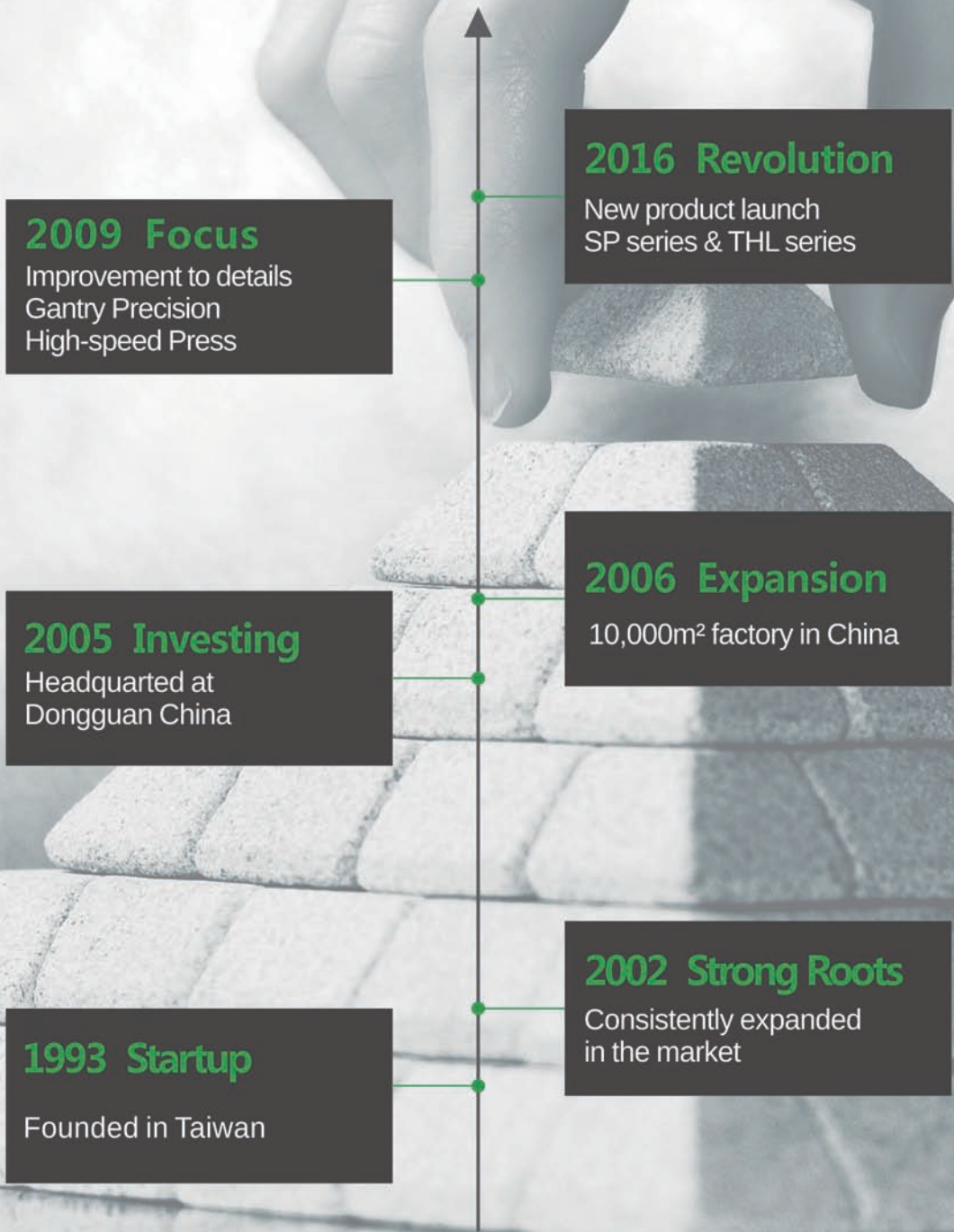


Powerful Production Capabilities
The core of Chinese manufacturing industry

Advanced Technological Power
Keep pace with World Technology

We have setup a professional dust-free assembly workshop with powerful circulated air conditioning in order to form a positive pressure workshop and guarantee the highest standard of cleanliness. It could enhance the stability and lifespan of our high-speed presses.

BRAND History



Honourary & Certification

Famous Brand ♦ ISO 9001 certificate ♦ Patents granted



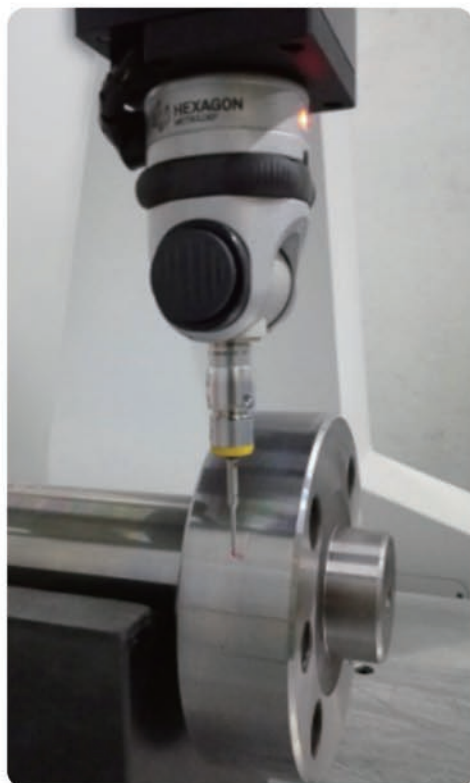
As one of the core competencies - R&D team, with innovative and creativity spirit, they develop visions that they put into practice and therefore constantly innovate a wide range of high-speed presses and granted varied patents, which other competitors may pursue for long time.



Quality Assurance

The entire production flow in compliance with ISO9001:2008 quality management system requirements. We have nearly hundred kind of precision measuring instruments such as Japan made B.D.C accuracy monitoring instrument, Switzerland made 2D detector, Hexagon explorer and laser geometrical measurement instruments, accurately measure each component of presses assured its perfection and JIS super grade of accuracy. In addition, we have setup an exclusive supply chain management system which keeps track of moving our product and service from supplier to customer.





Hexagon explorer

Various type of high-tech design systems help to improve efficiency:

- "Intelligence Finite Element Analysis System" ensured the optimization of body and part design,
- Automatic Dynamic Analysis of Mechanical Systems (ADAMS) greatly accelerating the pace of research,
- Japan calculating software precisely monitor the crankshaft strength, flywheel pressure and others primary element.



Switzerland made 2D detector



Japan made B.D.C accuracy monitoring instrument



Powerful Precision Processing Equipment

Continuous Improvement

Our employees are well trained and highly experienced. Each new staff will be instructed by skilled senior on one-to-one training to build up professional skills. Meanwhile, we also offer training course for employee periodically of learning new technology.



Higher Accuracy

We have invested manufacturing equipment immensely that will be more impressively precise and consistently perfected presses offer to our clients.

Good Tools make for Top-class parts

We are one of the leading manufacturers possess massive advanced machining equipment, including gantry machining, vertical machining and CNC machines.



PRESS MODEL

◆ M series – C Frame Precision High-speed Press

M-25	11
M-40/MHS-40	11
M-60	12
MHS-80	12

◆ CHS series – Gantry Single Crank Precision High-speed Press

CHS-25	15
CHS-40	15

◆ CHD series – Gantry Double crank Precision High-speed Press

CHD-30	18
CHD-45	18
CHD-60	19
CHD-80	23
CHD-125	23
CHD-220	24
CHD-360	24

◆ SP Superior series – Gantry Single/Double Precision High-speed Press

CHS-25sp	27
CHS-40sp	27
CHD-60sp	28

◆ THL Luxe series – Gantry Double crank Precision High-speed Press

THL-80	30
--------	----

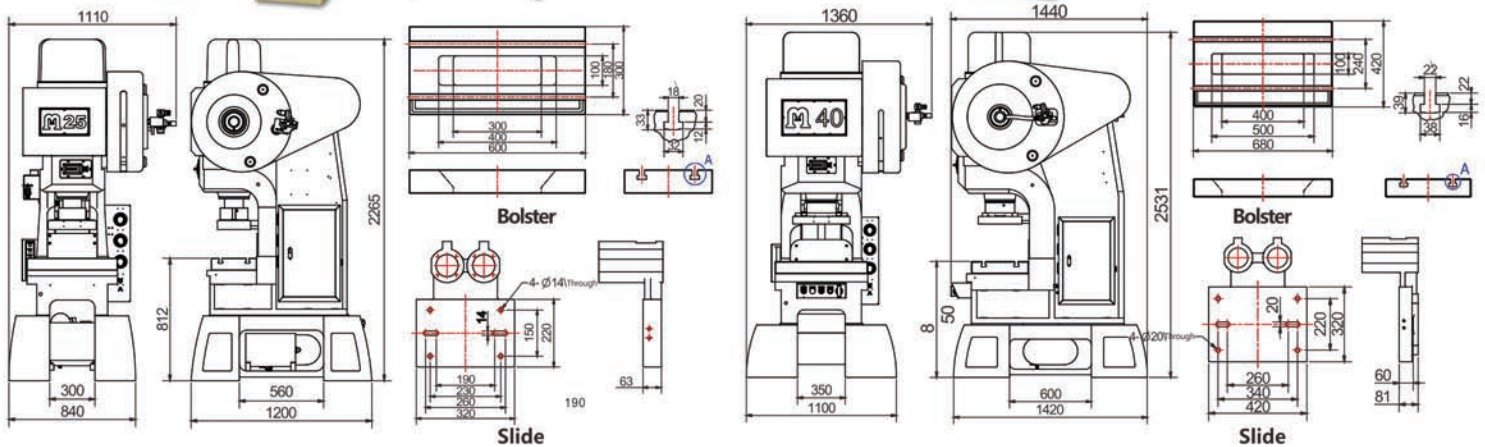


Japan JIS
Super Grade
Accuracy

M series
C Frame
Precision
High-speed Press

Function Features

- High rigidity cast steel through internal stress relief to ensure long-term high precision.
- Tri-round guide pole apply with lubrication system to minimize the kinetic force of friction and heat deformation.
- Apply high pressure oil on crankshaft centre to avoid oil leakage caused by rupture tube and reduce moving of parts.
- Inverted dynamic balancing device to achieve high speed stability of equilibrium.
- Manual (electric) die height adjustment device with digital die height indicator and hydraulic slide locking device to ensure product accuracy.
- MCU control system display press angle, tachogram, fault signal and others information.



Technical Parameters

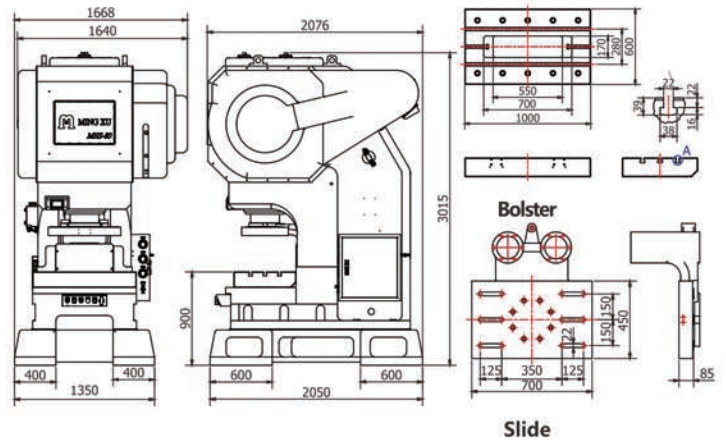
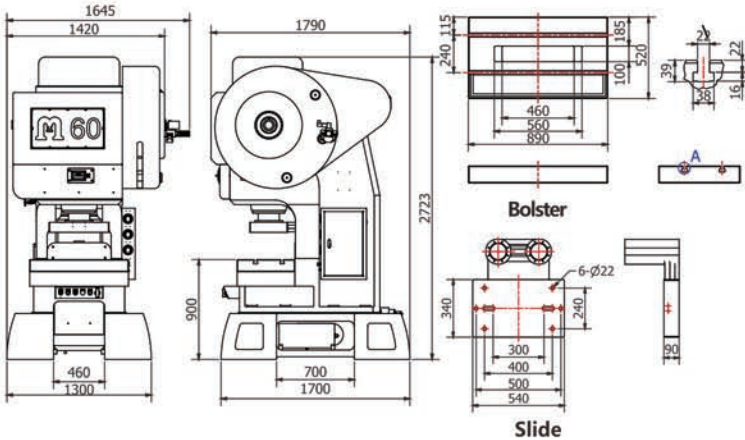
Model		M-25				M-40/MHS-40		
Capacity	Ton	25				40		
Stroke	mm	20	25	30	35	20	30	40
Speed	S.P.M	200-900	200-850	200-800	200-750	200-800	200-700	200-600
Die-Height	mm	185-215	182-212	180-210	178-208	215-245	210-240	205-235
Bolster Area	mm	600*300*80				680*420*90		
Slide Area	mm	320*220				420*320		
Slide Adjustment	mm	30				30		
Bed Opening	mm	(400) 300*100				(500) 400*100		
Main Motor	HP/kW	5 / 3.7				7.5 / 5.5		
Gross Weight (approx.)	Ton	2.9				4.9		
Lubrication		Automatic Lubrication				Automatic Lubrication		
Speed Control		Inverter				Inverter		
Clutch & Brake		Air & Friction				Air & Friction		
Auto Top Stop		T.D.C				T.D.C		
Shock Absorber		Pneumatic				Pneumatic		



M-60



MHS-80



Technical Parameters

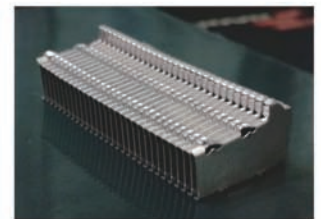
Model		M-60					MHS-80				
Capacity	Ton	60					80				
Stroke	mm	25	30	40	50	20	30	40	50	60	
Speed	S.P.M	200-700	200-650	200-550	200-450	200-600	200-500	200-400	200-300	200-300	
Die-Height	mm	208-258	205-255	200-250	195-245	320-370	315-365	310-360	305-355	300-350	
Bolster Area	mm	890*520*110					1000*600*150				
Slide Area	mm	540*340					700*450				
Slide Adjustment	mm	50					50				
Bed Opening	mm	(560) 460*100					(700) 550*170				
Main Motor	HP/kW	15 / 11					30 / 22				
Gross Weight (approx.)	Ton	8					14				
Lubrication		Automatic Lubrication					Automatic Lubrication				
Speed Control		Inverter					Inverter				
Clutch & Brake		Air & Friction					Air & Friction				
Auto Top Stop		T.D.C					T.D.C				
Shock Absorber		Mounting					Mounting				

Standard Accessories

Accessories	Standard
Inverter	●
Die height Indicator	●
Manual die height adjustment (M-25, M40)	●
Electric die height adjustment (M-60, MHS-80)	●
Die height accuracy 0.01mm	●
Micro inching positioning	●
Dynamic balancer	●
Hydraulic slide locking device	●
Electric control box	●
Circulation lubrication device	●
Clutch & Brake	●

Accessories	Standard
Electronic rotary cam switch (applicable only for M-60 & MHS-80)	●
Shock absorber (height: pneumatic 120mm, mounting 220mm)	●
Main motor FWD. REV. changeover device	●
Misfeed detector	●
Electric stroke counter	●
Air Ejector	●
Power socket	●
Air source connector	●
Work light	●
Tool box	●
Operation manual	●

Proven and Tested Quality





CHS series
Gantry Single Crank
Precision
High-speed Press

Japan JIS
Super Grade
Accuracy

Function Features

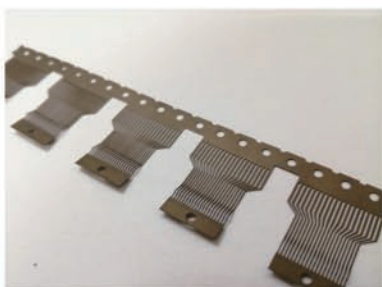
- Integral high rigidity cast steel body structure guaranteed overall strength and adopts FEA to optimize its design.
- As-cast finished go through annealing, rough machining and vibration aging treatment for stress relief to ensure long-term high precision.
- Inverted dynamic balancing device to achieve high speed stability.
- Gantry type design could minimize deformation of body structure.
- Apply high pressure oil on crankshaft centre to minimize the risk of pipe breakage.
- Manual die height adjustment equipment with digital die height indicator and hydraulic slide locking device to ensure product accuracy.
- MCU control system display press angle, tachogram, fault signal and others information.

Standard Accessories

Accessories	Standard
Inverter	●
Die height Indicator	●
Manual die height adjustment	●
Die height accuracy 0.01mm	●
Micro inching positioning	●
Dynamic balancer	●
Hydraulic slide locking device	●
Electric control box	●
Circulation lubrication device	●
Clutch & Brake	●
Electronic rotary cam switch	●

Accessories	Standard
Safety door (front & back sound insulation)	●
Shock absorber (height: pneumatic 120mm, mounting 220mm)	●
Main motor FWD. REV. changeover device	●
Misfeed detector	●
Electric stroke counter	●
Air Ejector	●
Power socket	●
Air source connector	●
Work light	●
Tool box	●
Operation manual	●

Proven and Tested Quality





Japan JIS
Super Grade
Accuracy

CHD series
Gantry Double Crank
Precision
High-speed Press

Function Features

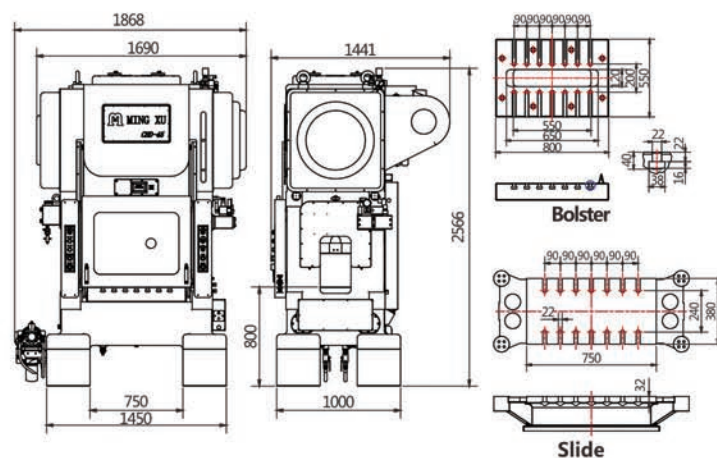
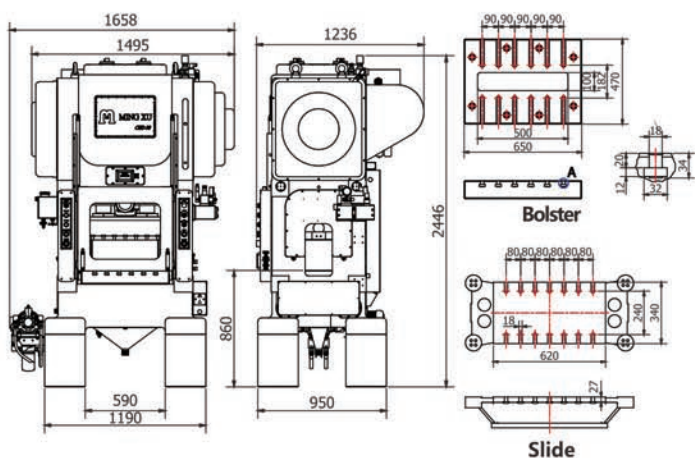
- Integral high rigidity cast steel through internal stress relief to ensure long-term high precision.
- Six-round guide pole apply with lubrication system to minimize the kinetic force of friction and heat deformation.
- Apply high pressure oil on crankshaft centre to minimize the risk of pipe breakage.
- Inverted dynamic balancing device to achieve high speed stability of equilibrium.
- Electric die height adjustment equipped with digital die height indicator and hydraulic slide locking device to ensure product accuracy.
- MCU control system display press angle, tachogram, fault signal and others information.



CHD-30



CHD-45



Technical Parameters

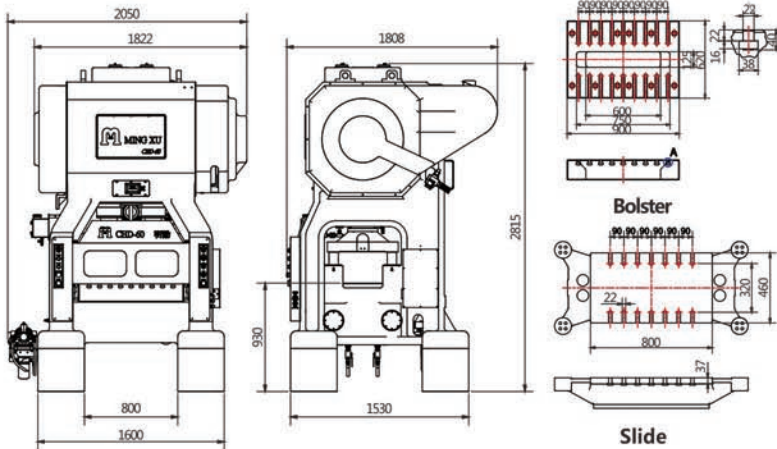
Model		CHD-30				CHD-45			
Capacity	Ton	30				45			
Stroke	mm	20	25	30	40	20	25	30	40
Speed	S.P.M	200-1000	200-900	200-800	200-600	200-900	200-800	200-700	200-600
Die-Height	mm	195-235	192-232	190-230	185-225	230-280	227-277	225-275	220-270
Bolster Area	mm	650*470*100				800*550*120			
Slide Area	mm	620*340				750*380			
Slide Adjustment	mm	40				50			
Bed Opening	mm	500*100				(650) 550*120			
Window width (Left & Right)	mm	200				250			
Main Motor	HP/kW	10 / 7.5				15 / 11			
Gross Weight (approx.)	Ton	5.2				8.5			
Lubrication		Automatic Lubrication				Automatic Lubrication			
Speed Control		Inverter				Inverter			
Clutch & Brake		Air & Friction				Air & Friction			
Auto Top Stop		T.D.C				T.D.C			
Shock Absorber		Mounting or pneumatic (option)				Mounting or pneumatic (option)			



CHD-60

Technical Parameters

Model		CHD-60			
Capacity	Ton	60			
Stroke	mm	20	30	40	50
Speed	S.P.M	200-700	200-600	200-500	200-400
Die-Height	mm	235-285	230-280	225-275	220-270
Bolster Area	mm	900*620*160			
Slide Area	mm	800*460			
Slide Adjustment	mm	50			
Bed Opening	mm	(750) 600*125			
Window width (Left & Right)	mm	340			
Main Motor	HP/kW	20 / 15			
Gross Weight (approx.)	Ton	10.5			
Lubrication		Automatic Lubrication			
Speed Control		Inverter			
Clutch & Brake		Air & Friction			
Auto Top Stop		T.D.C			
Shock Absorber		Mounting			

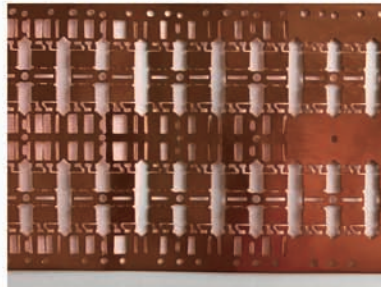
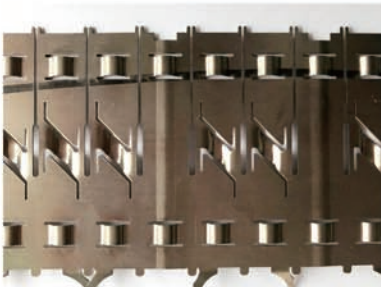
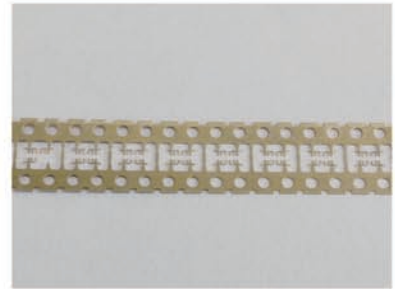
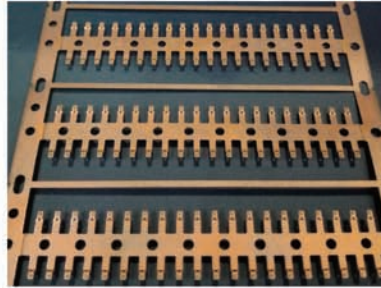
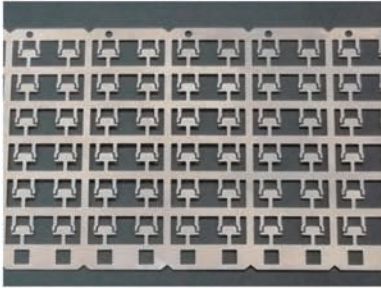


Standard Accessories

Accessories	Standard
Inverter	●
Die height Indicator	●
Electric die height adjustment	●
Die height accuracy 0.01mm	●
Micro inching positioning	●
Dynamic balancer	●
Hydraulic slide locking device	●
Electric control box	●
Circulation lubrication device	●
Clutch & Brake	●
Oil cooler	●
Electronic rotary cam switch	●

Accessories	Standard
Safety door (front & back sound insulation)	●
Shock absorber (height: mounting 220mm)	●
Main motor FWD. REV. changeover device	●
Misfeed detector	●
Electric stroke counter	●
Air Ejector	●
Power socket	●
Air source connector	●
Work light	●
Tool box	●
Operation manual	●

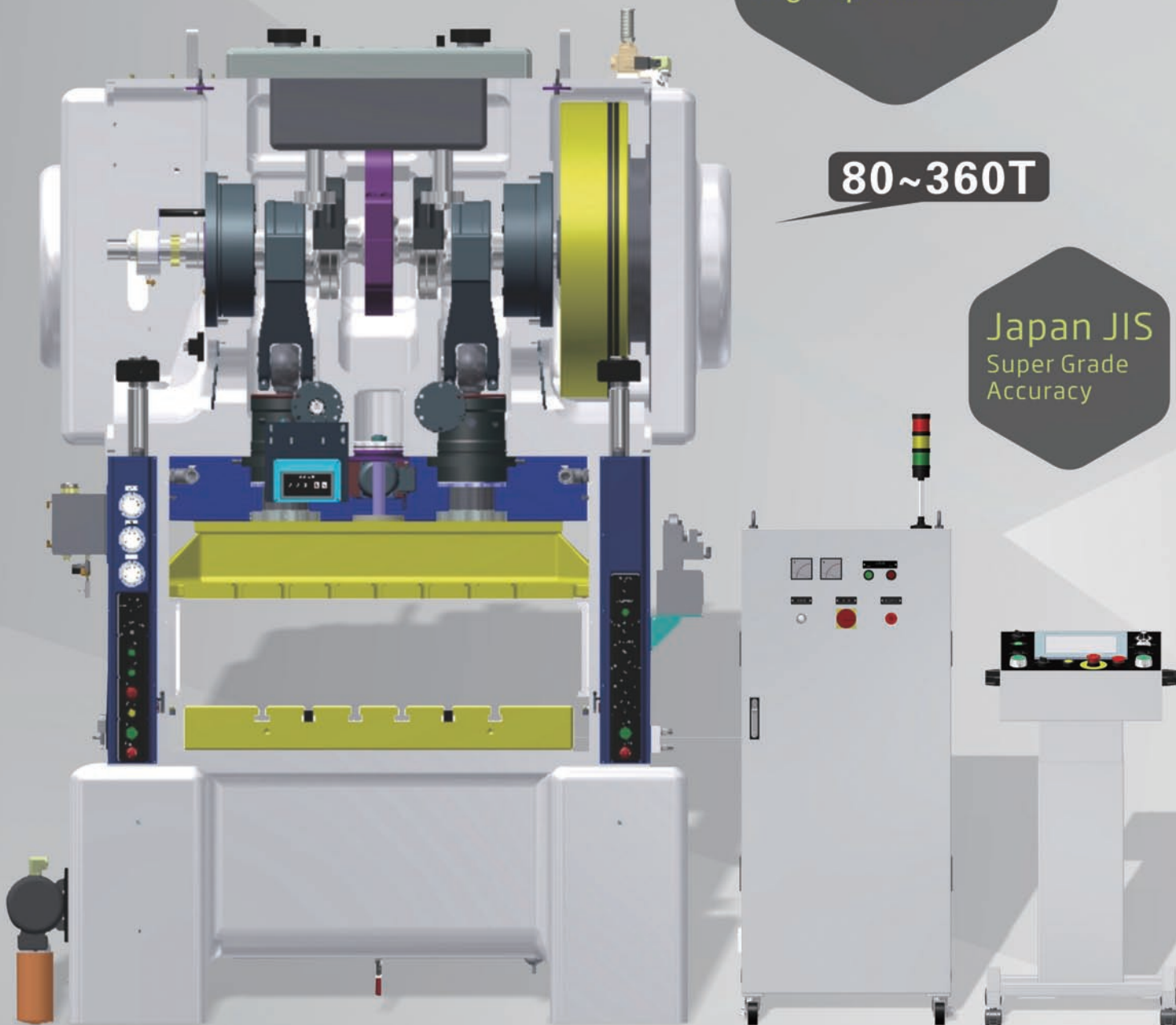
Proven and Tested Quality

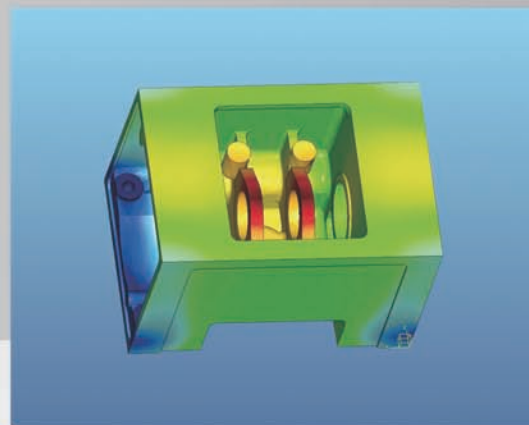
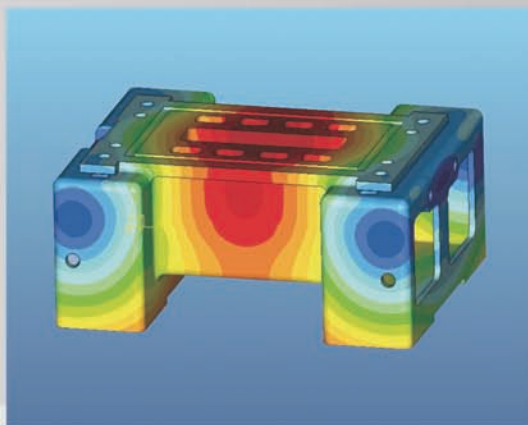


CHD series
Gantry Double Crank
Precision
High-speed Press

80~360T

Japan JIS
Super Grade
Accuracy





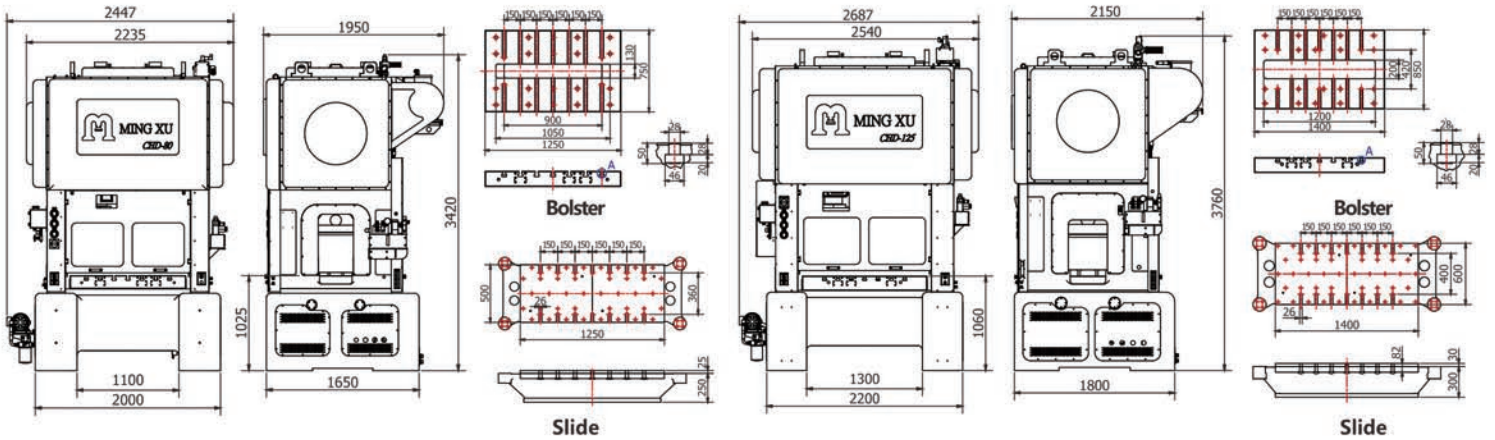
Function Features

- Oil cooler controlled the internal oil temperature balancing cycle to avoid sudden changes of temperature caused of unstable thermal dilatation, minimize deformation and improve bottom dead point stability.
- Integral high rigidity cast steel body structure guaranteed overall strength and adopts FEA to optimize its design.
- As-cast finished go through annealing, rough machining and vibration aging treatment for stress relief to ensure long-term high precision.
- Apply high pressure oil on crankshaft centre to minimize the risk of oil pipe breaking. Lubricating oil pass through the thermostat oil cooler to minimize heat deformation.
- Inverted dynamic balancing device to achieve high speed stability.
- Gantry type design could minimize deformation of body structure.
- Hydraulic slide lock release device user-friendly and make sure press running safely.
- Electric die height adjustment equipped with digital die height indicator and hydraulic slide locking device to ensure product accuracy.
- T-mobile station display press angle, tachogram, fault signal and others information.

CHD-80

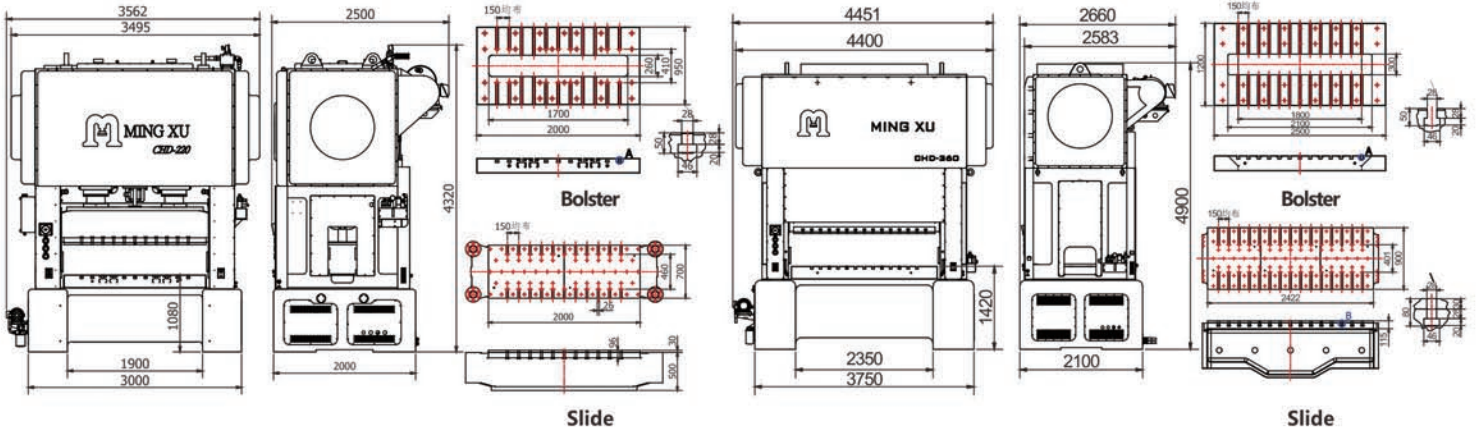


CHD-125



Technical Parameters

Model		CHD-80				CHD-125			
Capacity	Ton	80				125			
Stroke	mm	20	30	40	50	20	30	40	50
Speed	S.P.M	200-600	200-535	200-465	200-400	200-550	200-500	200-450	200-400
Die-Height	mm	405-455	400-450	395-445	390-440	405-455	400-450	395-445	390-440
Bolster Area	mm	1250*750*140				1400*850*160			
Slide Area	mm	1250*500				1400*600			
Slide Adjustment	mm	50				50			
Bed Opening	mm	900*130				1200*200			
Window width (Left & Right)	mm	350				400			
Main Motor	HP/kW	30 / 22				40 / 30			
Gross Weight (approx.)	Ton	18.5				26			
Lubrication		Automatic Lubrication				Automatic Lubrication			
Speed Control		Inverter				Inverter			
Clutch & Brake		Air & Friction				Air & Friction			
Auto Top Stop		T.D.C (Movable Control Panel)				T.D.C (Movable Control Panel)			
Shock Absorber		Mounting				Mounting			



Technical Parameters

Model		CHD-220				CHD-360				
Capacity	Ton	220				360				
Stroke	mm	20	30	40	50	20	30	40	50	60
Speed	S.P.M	150-450	150-400	150-350	150-300	100-400	100-350	100-300	100-250	100-250
Die-Height	mm	405-455	400-450	395-445	390-440	465-525	460-520	455-515	450-510	445-505
Bolster Area	mm	2000*950*180				2500*1200*220				
Slide Area	mm	2000*700				2500*900				
Slide Adjustment	mm	50				60				
Bed Opening	mm	1700*260				(2100) 1800*300				
Window width (Left & Right)	mm	350 (400)				Width varies according to the height of the material line				
Main Motor	HP/kW	50 / 37				75 / 55				
Gross Weight (approx.)	Ton	48				76.5				
Lubrication		Automatic Lubrication				Automatic Lubrication				
Speed Control		Inverter				Inverter				
Clutch & Brake		Air & Friction				Air & Friction				
Auto Top Stop		T.D.C (Movable Control Panel)				T.D.C (Movable Control Panel)				
Shock Absorber		Mounting				Mounting				

Standard Accessories

Accessories	Standard
Inverter	●
Die height Indicator	●
Electric die height adjustment	●
Die height accuracy 0.01mm	●
Micro inching positioning	●
Dynamic balancer	●
Hydraulic slide locking device	●
Electric control box	●
T-mobile station	●
Circulation lubrication device	●
Clutch & Brake	●
Oil cooler	●
Electronic rotary cam switch	●
Safety door (front & back sound insulation)	●

Accessories	Standard
Shock absorber (height: mounting 220mm)	●
Crankshaft angle indicator	●
Main motor FWD. REV. changeover device	●
Misfeed detector	●
Electric stroke counter	●
Power socket	●
Air source connector	●
Work light	●
Tool box	●
Operation manual	●

Accessories	Optional
Die Arm	●
Die Lifter	●
RAM controller	●

Proven and Tested Quality

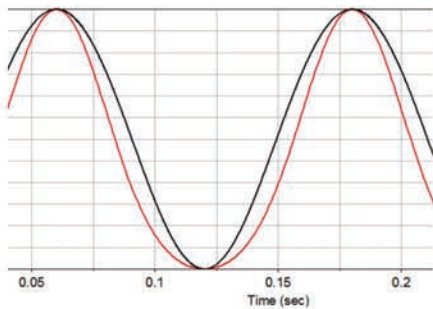




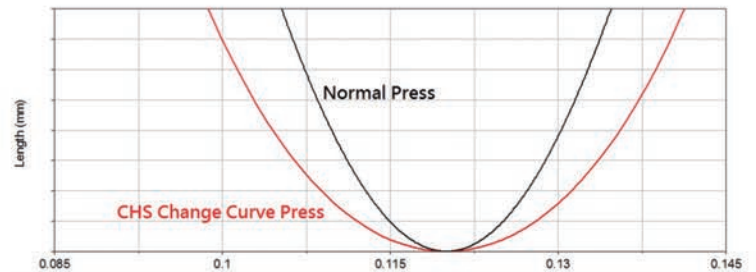
SP series
Gantry Single/Double
Precision
High-speed Press

Japan JIS
Super Grade
Accuracy

B.D.C residence time increase **80%**

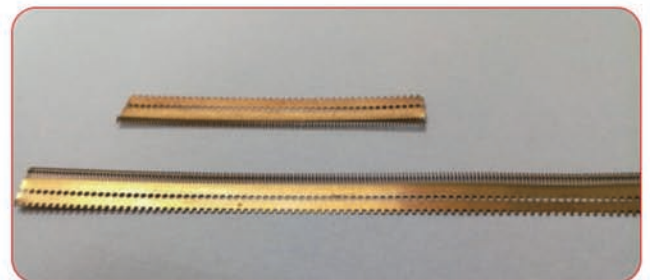


Change Curve Invention Patent



Function Features

- Bottom dead centre under decelerate-loading design, B.D.C residence time increased by more than 80%
- Oblique body design structure reduces punching deformation, reducing power losses and increased rigidity.
- Integral high rigidity cast steel body structure guaranteed overall strength and adopts FEA to optimize its design.
- As-cast finished go through annealing, rough machining and vibration aging treatment for stress relief to ensure long-term high precision.
- Inverted dynamic balancing device to achieve high speed stability.
- Gantry type design could minimize deformation of body structure.
- Apply high pressure oil on crankshaft centre to minimize the risk of pipe breakage.
- Manual (Electric) die height adjustment equipped with digital die height indicator and hydraulic slide locking device to ensure product accuracy.
- PLC screen display press angle, tachogram, fault signal and others information.

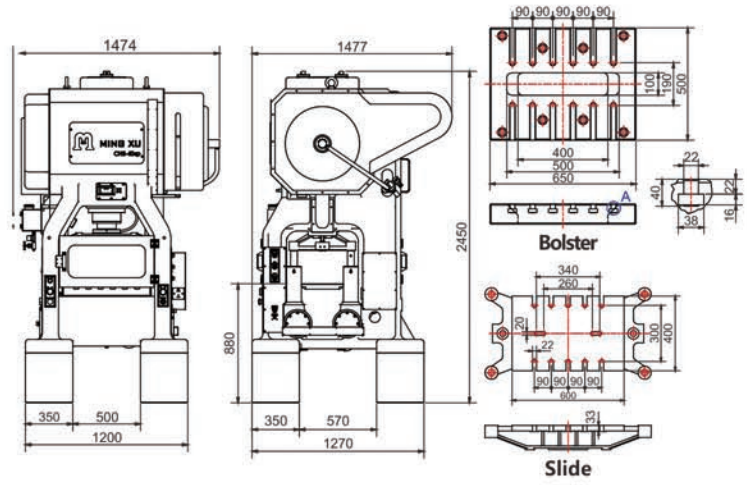
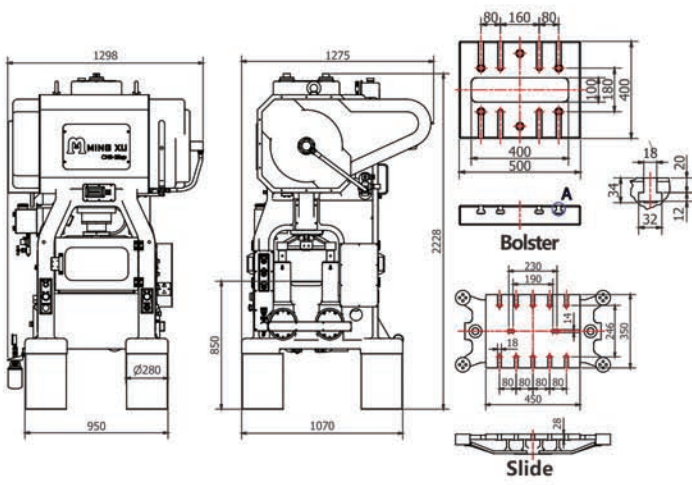




CHS-25SP

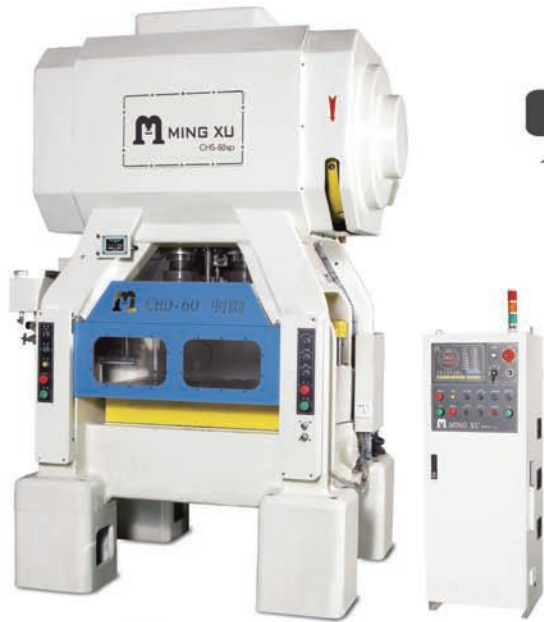


CHS-40SP



Technical Parameters

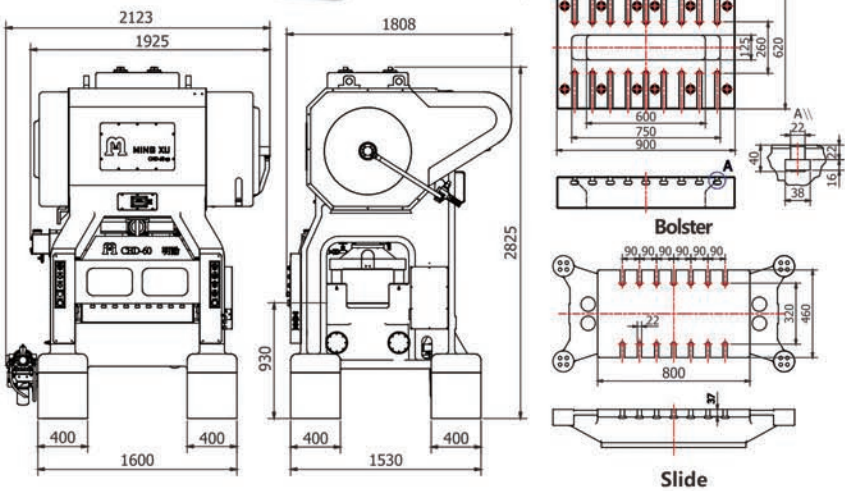
Model		CHS-25SP			CHS-40SP		
Capacity	Ton	25			40		
Stroke	mm	20	25	30	20	30	40
Speed	S.P.M	200-700	200-700	200-700	200-600	200-600	200-600
Die-Height	mm	185-215	182-212	180-210	215-245	210-240	205-235
Bolster Area	mm	500*400*80			650*500*90		
Slide Area	mm	450*350			600*400		
Slide Adjustment	mm	30			30		
Bed Opening	mm	400*100			(500) 400*100		
Window width (Left & Right)	mm	210			310		
Main Motor	HPxP	7.5 x 4			10 x 4		
	kWxP	5.5 x 4			7.5 x 4		
Gross Weight (approx.)	Ton	2.9			4.8		
Lubrication		Automatic Lubrication (Thermostat oil cooler)			Automatic Lubrication (Thermostat oil cooler)		
Speed Control		Inverter			Inverter		
Clutch & Brake		Air & Friction			Air & Friction		
Auto Top Stop		T.D.C			T.D.C		
Shock Absorber		Pneumatic			Pneumatic		



CHD-60SP

Technical Parameters

Model		CHD-60SP			
Capacity	Ton	60			
Stroke	mm	20	30	40	50
Speed	S.P.M	150-500	150-500	150-500	150-400
Die-Height	mm	235-285	230-280	225-275	220-270
Bolster Area	mm	900*620*160			
Slide Area	mm	800*460			
Slide Adjustment	mm	50			
Bed Opening	mm	(750) 600*125			
Window width (Left & Right)	mm	340			
Main Motor	HPxP	20 x 4			
	kWxP	15 x 4			
Gross Weight (approx.)	Ton	10.5			
Lubrication		Automatic Lubrication (Thermostat oil cooler)			
Speed Control		Inverter			
Clutch & Brake		Air & Friction			
Auto Top Stop		T.D.C			
Shock Absorber		Mounting			



Standard Accessories

Accessories	Standard
Inverter	●
Die height Indicator	●
Manual die height adjustment (CHS-25SP, CHS-40SP)	●
Electric die height adjustment (applicable only for CHD-60SP)	●
Die height accuracy 0.01mm	●
Micro inching positioning	●
Dynamic balancer	●
Hydraulic slide locking device	●
ECB with Programmable logic controller	●
Circulation lubrication device	●
Clutch & Brake	●
Thermostat oil cooler (applicable only for SP series)	●

Accessories	Standard
Electronic rotary cam switch	●
Safety door (front & back sound insulation)	●
Shock absorber (height: pneumatic 120mm, mounting 220mm)	●
Main motor FWD. REV. changeover device	●
Misfeed detector	●
Electric stroke counter	●
Air Ejector	●
Power socket	●
Air source connector	●
Work light	●
Tool box	●
Operation manual	●

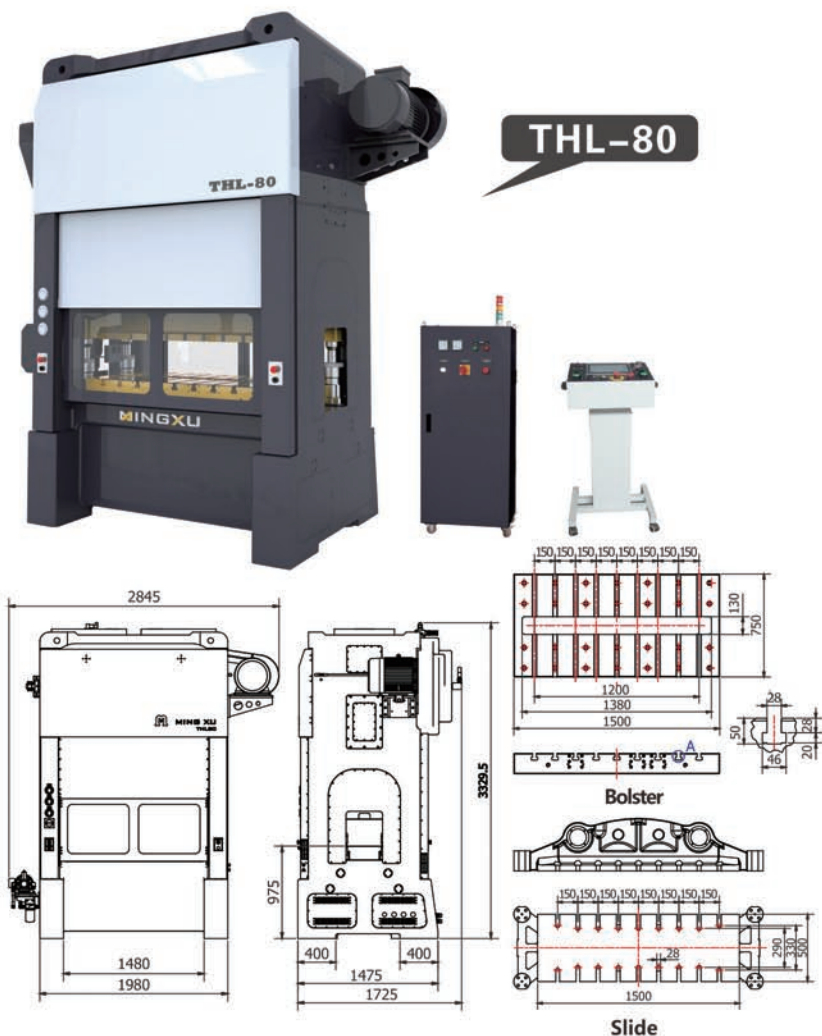


Japan JIS
Super Grade
Accuracy

THL series
Gantry Double Crank
Precision
High-speed Press

Function Features

- **Monitoring punching force and RAM power constantly and adjusted slide in real time.**
Consequently, increasing bottom dead point accuracy to within 0.005mm.
- Integral high rigidity cast steel body structure guaranteed overall strength and adopts FEA to optimize its design.
- As-cast finished go through annealing, rough machining and vibration aging treatment for stress relief to ensure long-term high precision.
- Lubricating oil pass through the thermostat oil cooler to minimize heat deformation.
- Reverse dynamic balancing device to achieve high speed stability.
- Gantry type design could minimize deformation of body structure.
- Electric die height adjustment equipped with digital die height indicator and hydraulic slide locking device to ensure product accuracy.
- T-mobile station display press angle, tachogram, fault signal and others information.



THL-80

Technical Parameters

Model		THL-80		
Capacity	Ton	80		
Stroke	mm	20	25	30
Speed	S.P.M	200-500	200-500	200-500
Die-Height	mm	220-250	220-250	220-250
Bolster Area	mm	1500*750*150		
Slide Area	mm	1500*500		
Slide Adjustment	mm	30		
Bed Opening	mm	(1380) 1200*130		
Window width (Left & Right)	mm	384		
Main Motor	HP/kW	30 / 22		
Gross Weight (approx.)	Ton	22.5		
Lubrication		Automatic Lubrication (Thermostat oil cooler)		
Speed Control		Inverter		
Clutch & Brake		Air & Friction		
Auto Top Stop		T.D.C		
Shock Absorber		Mounting		

Standard Accessories

Accessories	Standard
Inverter	●
Die height Indicator	●
Electric die height adjustment	●
Die height accuracy 0.005mm	●
Micro inching positioning	●
Dynamic balancer	●
Electric control box	●
T-mobile station	●
Circulation lubrication device	●
Clutch & Brake	●
Thermostat oil cooler (applicable only for THL series)	●
Electronic rotary cam switch	●
Safety door (front & back sound insulation)	●

Accessories	Standard
Shock absorber (height: mounting 220mm)	●
Crankshaft angle indicator	●
Main motor FWD. REV. changeover device	●
Misfeed detector	●
Electric stroke counter	●
Power socket	●
Air source connector	●
Work light	●
Tool box	●
Operation manual	●

Accessories	Optional
Die Arm	●
Die Lifter	●
RAM controller	●