

强力粉碎机RG-26E/36E  
Powerful granulator



强力粉碎机RG-26G/36G/46G  
Powerful granulator



静音集中粉碎机RG-26GQ/36GQ  
Soundproof centralized granulator



强力粉碎机适用于破碎不同种类的软、硬塑料，将块状、球状、条状以及水口料等塑胶次品、废品，提高了塑料利用率。

静音集中粉碎机在粉碎过程中声音进一步降低，满足不同客户的要求。  
Description :

Plastic powerful granulator apply to crushing different kinds of soft,hard plastics blocks,balls, stub bars and nozzle material etc.,improve plastic utilization.

Soundproof centralized granulator is with lower noise function,can meet different customers requirement.



宁波北仑日宏机械制造有限公司  
Ningbo Beilun Rhong Machinery Manufacturing Co.,Ltd

地址：浙江.宁波.北仑.小港街道.东岗碶.  
Donggangqi,Xiaogang Subdistrict,Beilun,  
Ningbo,Zhejiang Province,China.  
T +86-574-55019010 , MB:0086 137 7723 9417  
F +86-574-55019017  
E-mail : leysa@plasticmachine-tool.com(EN)



Wechat



Website

更多咨询请访问：  
[www.plasticmachine-tool.com](http://www.plasticmachine-tool.com) (EN)

强力粉碎机RG-26E/36E  
Powerful granulator

强力粉碎机RG-26G/36G/46G  
Powerful granulator

静音集中粉碎机RG-26GQ/36GQ  
Soundproof centralized granulator

配置的旋风分离器，更方便的将粉碎料装袋，节省人力资源。  
Our design cyclone, better for collecting crushed material, save manpower

进料口不锈钢制作,可按照客户要求加磁铁。  
Feeding mouth made of stainless steel material, optional magnet bin on feeding mouth.

进料斗内层采用镀锌板制作,减少原料的污染。  
Inner feeding hopper is made of Galvanized plate material, reduce raw material pollution.

粉碎室采用中部半开结构,动定刀的更换更简单易行。  
Half-open structure in the middle of cutting chamber, better for replacing rotating and fixed blades.

机身采用全封闭式,有效的降低了粉碎时产生的噪音。  
Fully enclosed body, reduce noise during crushing.

定刀设计在粉碎室上平面,更方便拆卸、更换、清扫。  
Fixed blades installed on the upper plane of the crushing chamber, better for disassemble, replace and clean.

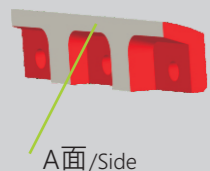
轴承安装在机体外,粉尘不易侵入,散热良好,保养及维护简便易行。  
Outside bearing design, hard to enter into dust, better cooling efficiency, maintenance.

配置了可调节避震脚,减小了因地面不平而导致的震动与产生的噪音。  
Equip with adjustable shock absorber because of uneven ground, can reduce noise and vibration.

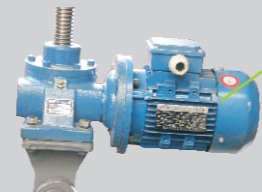
电机设过载保护,保护电机安全。  
Overload device to protect motor.

标配风机送料系统,提高生产效率,而且能将粉碎室内的物料与热量吸走,有效的降低粉碎室温度。  
Standard allocation with blower conveying system, increase production capacity, suck material and absorb heat to reduce the cutting chamber temperature.

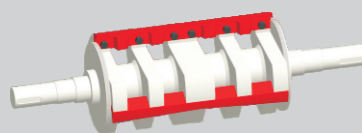
前门与粉碎室上箱设有安全开关,保证在打开时,刀具停止运转。  
Safety switch for front door and upside parts of cutting chamber, to make sure rotor stop running absolutely when opening front door or upper part of cutting chamber.



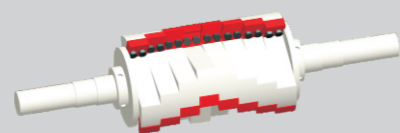
动刀具特殊设计,刃磨(A面)后不需调节刀具间隙,更方便拆卸,更换。刀具采用高铬钢材料,强度高,坚固耐用。  
Special designed rotating blades, no need to adjust gap after resharpening, easy to disassemble and replace blades. The blades are made of high chrome steel material, high strength, strong and durable.



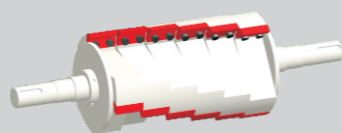
电动起落,开关进料斗更轻松。  
Motor driven system to open and close feeding hopper easily.



RG-36GQ  
片刀型 Paddle blades type



RG-26GQA/36GQA  
爪刀型 Staggered blades type



RG-26GQB/36GQB  
平刀型 Flat blades type

刀具采用“V形”切割技术,切削时物料从两侧向中心滑动,避免材料与机器侧壁的摩擦与堵塞。

多种刀架设计可供客户选择:

- 1.若为硬质球状料则选用爪刀型粉碎机;
- 2.若材料为薄壁壳管类、瓶类的产品需破碎回收要选用片刀型粉碎机;
- 3.粉碎普通片材、管材、型材及包装材料等制品两种(平、片刀型)粉碎机均可选用;

片刀型粉碎机是粉碎回收薄膜及薄片材的首选设备。

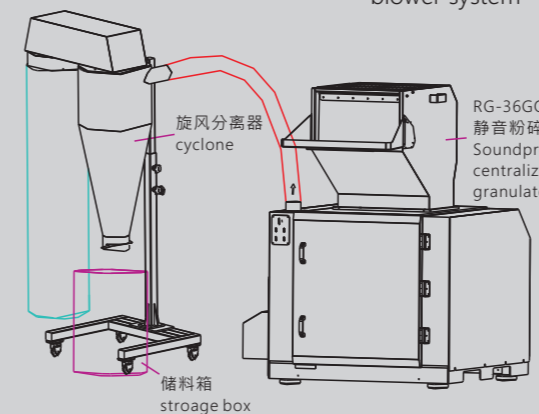
V type arrangement design, during crushing process, material will be crushed in claw blades center point, avoid friction and blockage between material and side wall.

How to choose the correct blades type:

- 1.If hardness block material, please choose staggered blades type central granulators.
- 2.If Thin-walled housing, bottles, please choose paddle blades type central granulators.
- 3.If sheet, pipe, profile and package material, with two choice, flat or paddle blades type central granulators all ok. Attention: paddle blades type central granulators better for crushing film and thinner sheet.

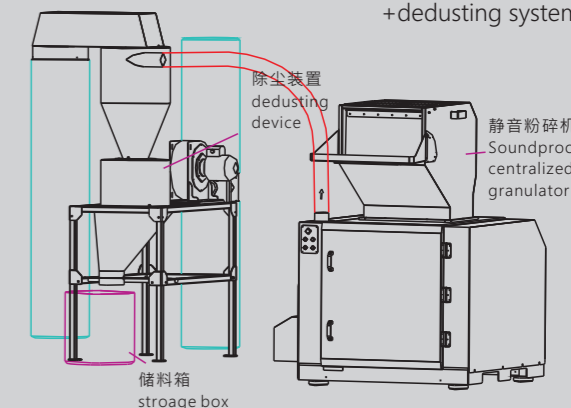
强力粉碎机安装示意图  
---风机送料

Powerful granulator  
Installation diagram  
---blower system



强力粉碎机安装示意图  
---风机送料+除尘装置

Powerful granulator  
Installation diagram  
--blower system  
+dedusting system



**规格表 Specifications**

机型 Model		RG-2640GQ	RG-2650GQ	RG-3660GQ	RG-3680GQ
电机功率 Power	kw	7.5	11	15	22
主轴转速 Rotor speed	rpm	560	560	560	560
活动刀 Rotating blades		PCS		●	●
	-A	PCS	24 ○	30 ○	36 ○
	-B	PCS	12 ●	15 ●	18 ○
固定刀 Fixed blades	PCS	2	4	4	4
筛网孔径 Screen diameter	mm	Φ10	Φ10	Φ12	Φ12
粉碎室尺寸 Cutting chamber size	mm	270X400	270X500	370X600	370X800
粉碎能力 Output	kg/h	300 ~ 550	400 ~ 650	400 ~ 700	600 ~ 900
粉碎时噪音 Noise	dB(A)	80 ~ 95	80 ~ 95	80 ~ 95	80 ~ 95
进料斗电动起落 Motor lifting device for hopper		●	●	●	●
风机送料系统 Blower conveying system		●	●	●	●
进料口加磁铁 Fixed magnet at feeding mouth		○	○	○	○
除尘装置 dedusting device		○	○	○	○
重量 Weight	kg	600	710	1700	2000
外形尺寸(L×W×H) External size	mm	1475X1375X1680	1475X1475X1680	1840X1615X2035	1840X1815X2035

产品规格若有变更,恕不另行通知。

Please excuse for not note if some specifications of products are changed.

Note 注:

- 1) "●"为标配, "○"为选购。  
"●" is standard allocation, "○" is selection purchase.
- 2) 标配为片刀型结构, "-A"为爪刀型结构, "-B"为平刀型结构。  
"V" shaped paddle blades type is standard allocation, "-A" means claw blades type (staggered blades type), "-B" means flat blades type.
- 3) 最大粉碎量取决于筛网孔径及粉碎材料等因素。  
The max. shredding quantity depend on the mesh hole diameter and shredding material quality.
- 4) 机器电压规格为3Φ, 380V, 50Hz。  
The machine voltage specification is 3Φ, 380V, 50Hz.  
The voltage can be changed as you require.

