



天力磁电

TIANLI MAGNET



www.dytldcsb.com

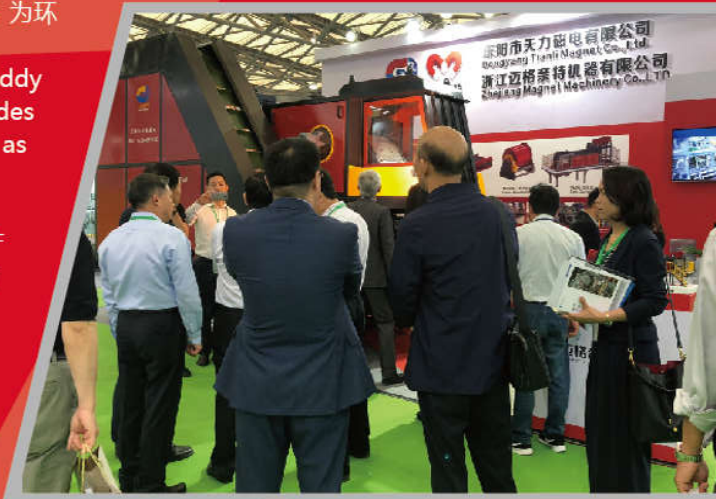
公司简介 Company profile

东阳市天力磁电有限公司，依靠磁选、涡电流分选、传感器分选等核心技术，为环保、矿山、电力、砂石骨料等众多行业提供物料回收处理解决方案。

Dongyang Tianli Magnet Co., Ltd. focus on the Magnetic&sorting, eddy current separation, sensor separation technology application, provides material recycling and processing solutions for industry such as recycling, mining, electricity and construction, etc.

公司成立于2006年，拥有专业的技术团队，与国内知名院校合作开发新产品，提升技术性能，优化行业解决方案。经过10余年的经验积累，“天力磁电”和“迈格奈特”两大品牌，已在行业内获得良好的口碑。

Founded in 2006, the company has a professional technical team, and domestic well-known colleges and universities to develop new products, improve technical performance, optimize industry solutions. After more than 10 years of experience, the two major brands of "TIANLI MAGNET" and "ZHEJIANG MAGNET" have gained a good reputation in the industry.



经过不断的技术更新，我们的明星产品如涡电流分选机、感应式分选机、自卸式永/电磁除铁器、永/电磁滚筒等，在回收行业表现的尤为出色，再加上我们能够为客户提供私人定制式的解决方案，我们生产线中黑色金属、有色金属、不锈钢等物料的分选回收率可以达到95-98%以上，已经为废钢、废塑料、废旧冰箱、木屑、生活垃圾、造纸废渣、废旧电子、废旧电池等行业的客户创造了丰厚的利润。

Through constant technological updates, Our special products such as eddy current separator, metal sorter(induction separator), self-discharge permanent/electromagnetic separator, permanent/electromagnetic roller, etc., are particularly outstanding in the recycling industry. Besides, we are able to provide customers with customized solutions. The recovery rate of ferrous metal, non-ferrous metal, stainless steel and other materials in our production line can reach to 95-98%, and we have created rich profits for customers in such industries as steel scrap, waste plastics, waste refrigerator, wood chip, household waste, paper waste residue, e-waste electronics and waste batteries.

公司十分注重品牌的推广，每年都参加国内外各个行业的会议及展会，包括上海、广州、德国、美国、澳大利亚、新加坡、韩国等。我们始终与客户保持亲密的沟通，不断吸收和引进国外新进理念和技术，不断开发和完善我们的产品。

Tianli company attaches great importance to brand promotion and participates in conferences and exhibitions of various industries at home and abroad every year, including Shanghai, Guangzhou, Germany, America, Australia, Singapore, South Korea, etc. We always keep close communication with customers, constantly absorb and introduce foreign new ideas and technologies, and constantly develop and improve our products.

天力公司发展迅速，是国内外众多工程公司、合同承包商、技术咨询公司的磁选、涡流分选、传感分选等设备的直接供应商，我们期待与您的深入合作！

Tianli company has developed rapidly and is a direct supplier of magnetic separation, eddy current separator, sensor separator and other equipment to many engineering companies, contractors and technical consulting companies at home and abroad. We look forward to further cooperation with you!



环境管理体系

高新技术

ISO9001质量管理体系认证

CE认证

MA安全认证



迈格奈特
MAGNET MACHINERY

天力磁电
TIANLI MAGNET

TLFXP

偏心涡电流分选机

TLFXP ECCENTRIC EDDY CURRENT SEPARATOR



www.dytldcsb.com

TLFXP偏心涡电流分选机

TLFXP eccentric eddy current separator model

产品简介

Product Introduction

本机采用偏心磁辊设计，大角度磁包角，配备振动给料机和挡板调节装置，紧凑合理的整机一体化设计，使得整机性能更稳定，分选效果更佳。

TLFXP eccentric eddy current separator adopts eccentric magnetic rotor design, large Angle magnetic system, equipped with vibration feeder and baffle adjusting device, compact and reasonable integrated design of the whole machine, which makes the performance of the whole machine more stable and the separation effect better.

设计原理

Design Principle

有色金属分选机是利用导体在高频交变磁场里可以产生感应电流的原理进行设计，该机工作时会在分选磁辊表面产生高频交变的强磁场，当金属块进入强磁分选区时，会在金属块内部感应出涡电流，此涡电流产生的磁场与原磁场方向相反，有相互排斥的作用力，这个排斥力的作用可以把金属块向前抛出，实现分离的目的。

Eddy current separator is the use of conductor in the high frequency alternating magnetic field can produce induced current principle to carry on the design,when it is working the separation magnetic roller surface will produce high-frequency alternating magnetic field, and when the metal into the strong magnetic separation zone,the metal piece inside can induction to the eddy current,this eddy current magnetic field is in the opposite direction as the original,produce mutually exclusive reaction,the repulsive force function can put metal piece was thrown forward, the realization of the aim of separation.

使用领域

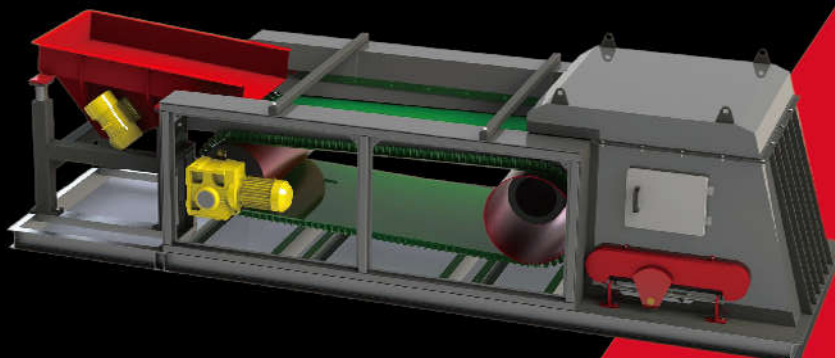
Field of use

主要适用于从工业废料、生活垃圾中分选出铜、铝等有色金属。

- 生活垃圾;
- 生活垃圾焚烧产生的炉渣;
- 造纸厂尾渣;
- 废旧玻璃回收;
- 木屑;
- 废旧金属回收;
- 电子垃圾回收;
- 废旧塑料回收;

It is mainly used for separating copper, aluminum and other non-ferrous metals from industrial wastes and household wastes.

- Household garbage;
- Slag from household refuse incineration;
- Tail residue of paper mill;
- Waste glass recycling;
- Wood chips;
- Scrap metal recycling;
- E-waste recycling;
- Recycling of waste plastics;



TLFXP 偏心涡电流分选机

TLFXP eccentric eddy current separator model

核心优势

Core Advantage

序号 No.	类型 Type	磁极数量 Pole number	磁场强度 Magnetic field intensity (Gs)	转速 Speed(r/min)
1	偏心	38	4500	3000
2		22	4000	3000
3		22 (国内同行标准) (domestic peer standards)	3000	3000

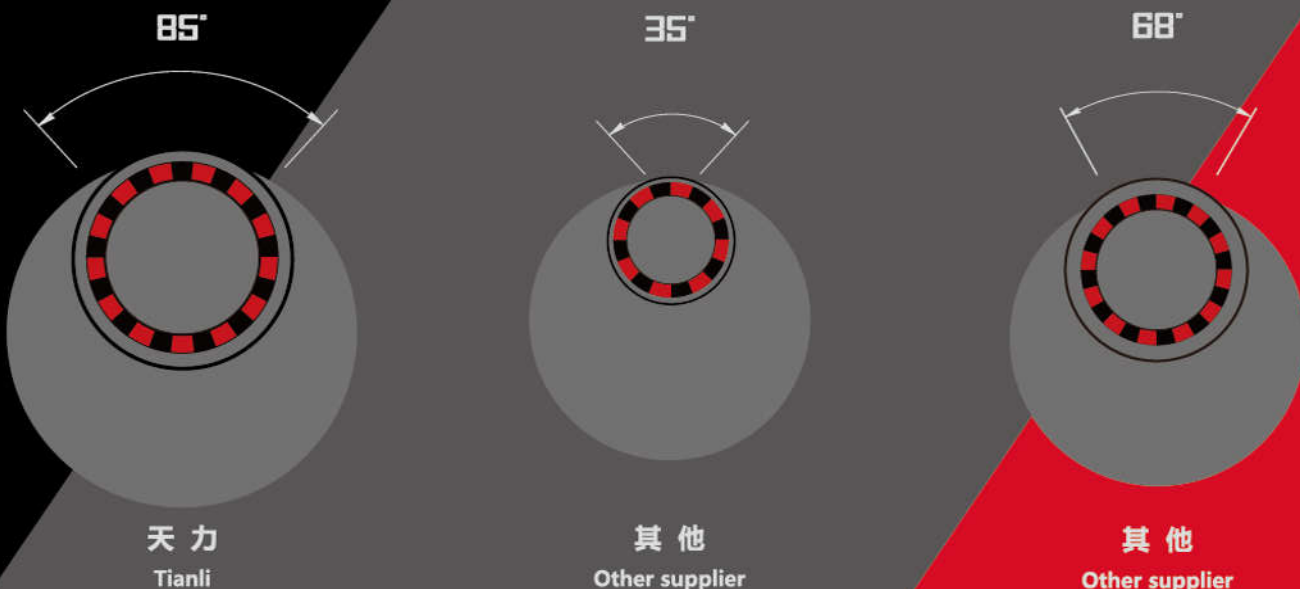
选型建议

Suggestions For Model Selection

入料粒度 Inpur size	磁极配置 magnet polar configuration
0-5mm	38 磁极强磁型 strong magnetic poles
5-30mm	22 磁极强磁型 strong magnetic poles
>30mm	22 磁极强磁型 strong magnetic poles

磁系包角

Magnetic System Angle



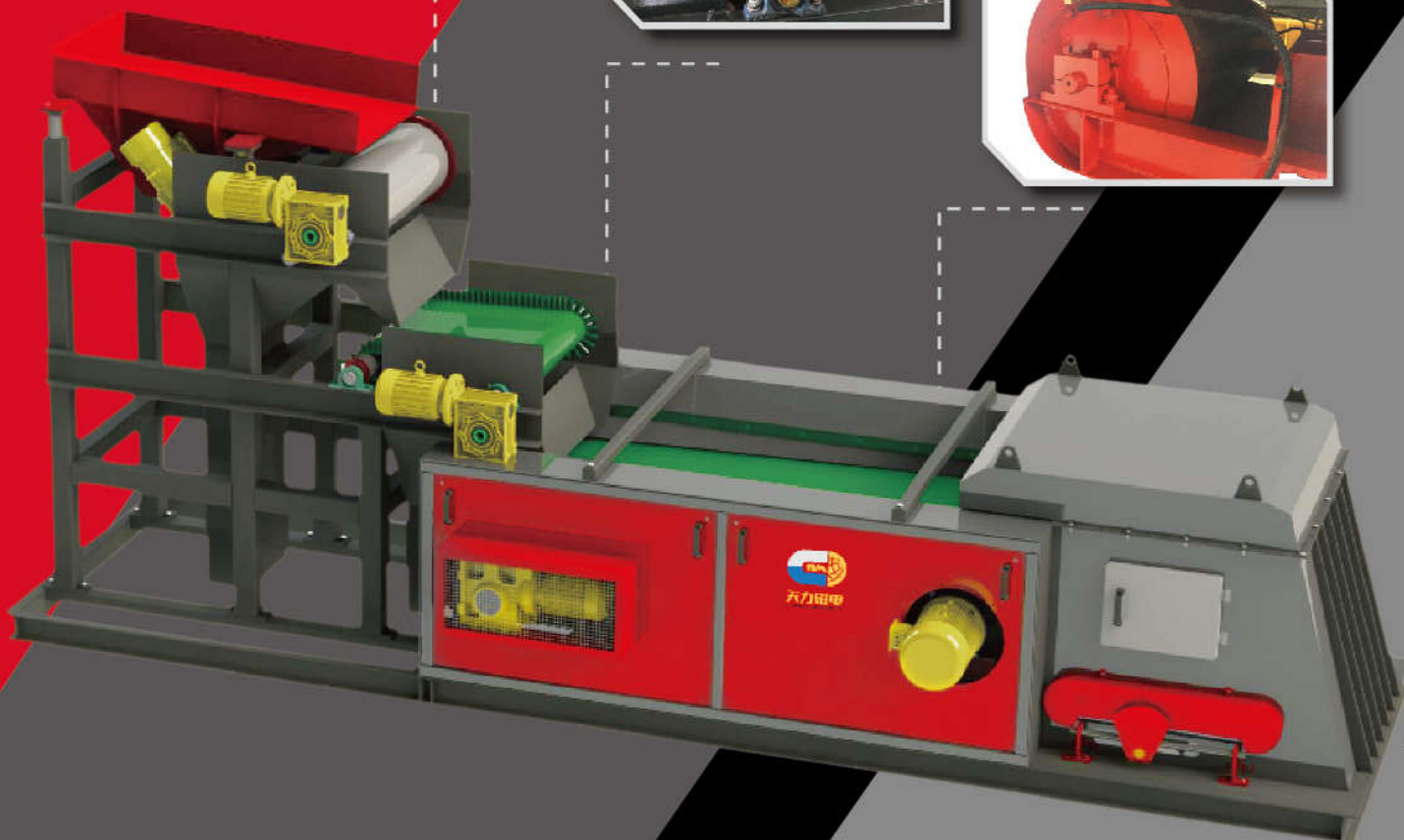
TLFXP偏心涡电流分选机

TLFXP eccentric eddy current separator model

产品特点

Product Advantages

- 使用进口轴承，使用寿命长，运行良好；
- 采用PLC可编程控制，一键启动，操作简单；
- 磁辊采用有效的磁系保护，防止高速运转时磁系脱落；
- 采用智能触磁控制系统，变频控制，运行更平稳可靠；
- 整机采用特殊工艺，精密打造，设备运行时噪音和振动极小；
- 安装了各种检查和报警系统，实时监控每个关键部件的操作。
- Imported bearings with long service life;
- PLC programmable control, easy operation;
- Special design prevent the magnetic system fall off;
- Intelligent touch and frequency conversion control keep machine stable;
- Special craft, precision manufacture reduce the noisy;
- check and alarm system to monitoring machine operation;



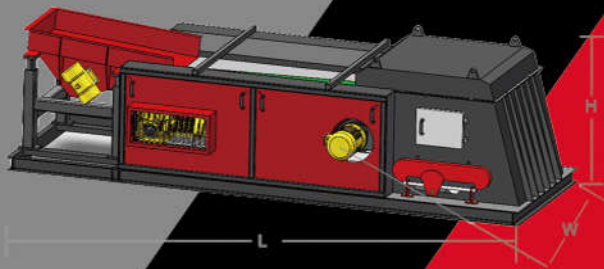
TLFXP偏心涡电流分选机

TLFXP eccentric eddy current separator model

分选效果图

Sorting Effect Diagram

物料 Material	分选前 before sorting	分选后 (金属) after sorting(Metal)	分选后 (非金属) after sorting(Non metal)
PET塑料 PET plastic			
废钢 steel scrap			
炉渣 slag			
废旧冰箱 old refrigerator			



产品规格

Equipment Parameters

型号 Type	給料皮带 Feed belt			处理能力 Capacity (m3/h)	耗能 Energy consumption	承重 Bearing	外形尺寸 Overall dimensions		
	給料宽度 Feed width (mm)	給料长度 Feed length (mm)	給料颗粒 Feed size		总功率 Power (kw)		长度 Length (mm)	宽度 Width (mm)	高度 Height (mm)
TLFXP-5	400	1500	≥1mm ²	4	5.9	700	4600	1660	1700
TLFXP-6	500			6		730		1760	
TLFXP-6.5	600			10		895		1860	
TLFXP-8	650			15		950		1910	
TLFXP-10	810			20		1225		2060	
TLFXP-12	1015			25		1555		2260	
TLFXP-14	1215			30	1875	2460			
TLFXP-16	1420	1800	35	10.7	2275	4900	2660		
TLFXP-18	1600	2000	40		2850	5100	2860		

PET塑料 PET plastic



废钢 steel scrap



炉渣 slag



废旧冰箱 old refrigerator



生活垃圾 Living garbage



TLFX同心涡电流分选机

TLFX concentric eddy current separator

产品简介

Product Introduction

TLFX同心涡电流分选机利用导体在高频交变磁场里可以产生感应电流的原理进行设计，但在磁辊上采用同心的设计，当金属块进入磁辊分选区时，会在金属块内部感应出涡电流，此涡电流产生的磁场与原磁场方向相反，有相互排斥的作用力，这个排斥力的作用可以把金属块向前抛出，实现分离的目的。

TLFX concentric eddy current separator with concentric magnetic rotor design, is the use of conductor in the high frequency alternating magnetic field can produce induced current principle to carry on the design, when it is working the separation magnetic roller surface will produce high-frequency alternating magnetic field, and when the metal into the strong magnetic separation zone, the metal piece inside can induction to the eddy current, this eddy current magnetic field is in the opposite direction as the original, produce mutually exclusive reaction, the repulsive force function can put metal piece was thrown forward, the realization of the aim of separation.

适用范围

Scope of Application

主要适用于从工业废料、生活垃圾中分选出铜、铝等有色金属。可广泛应用于垃圾处理、废旧汽车拆解回收、废旧电器回收等领域，以及有色金属加工行业的物料处理等行业。

It is mainly used to separate copper, aluminum and other non-ferrous metals from industrial waste and household waste. It can be widely used in the fields of waste disposal, waste automobile disassemble and recycling, waste electrical appliance recycling, and non-ferrous metal processing industry.

产品优点

Product Advantage

- 使用进口轴承，使用寿命长，运行良好；
- 采用PLC可编程控制，一键启动，操作简单；
- 磁辊采用有效的磁系保护，防止高速运转时磁系脱落；
- 采用智能触碰控制系统，变频控制，运行更平稳可靠；
- 整机采用特殊工艺，精密打造，设备运行时噪音和振动极小；
- 安装了各种检查和报警系统，实时监控每个关键部件的操作。
- Imported bearings with long service life;
- PLC programmable control, easy operation;
- Special design prevent the magnetic system fall off;
- Intelligent touch and frequency conversion control keep machine stable;
- Special craft, precision manufacture reduce the noisy;
- Various inspection and alarm systems are installed to monitor the operation of each key component in real time.

两款机型

Two Models

天力针对TLFX同心涡电流分选机提供两款机型：双辊同心涡电流分选机和三辊同心涡电流分选机，三辊同心涡电流分选机的设计相较于双辊同心涡电流分选机设计更合理，分选效果更优。

Tianli provides two models for TLFX concentric eddy current separator: Two-roll concentric eddy current separator and three-roll concentric eddy current separator. The design of three-roll concentric eddy current separator is more reasonable than two-roll concentric eddy current separator, with better separation effect.



三辊同心涡电流



双辊同心涡电流

产品规格

Product Parameters



同心式 Concentric type

型号 Type	给料皮带 Feed belt				耗能 Energy consumption	承重 Bearing	外形尺寸 Overall dimensions		
	给料宽度 Feed width (mm)	给料长度 Feed length (mm)	给料颗粒 Feed size	处理能力 Capacity (m3/h)	总功率 Power (kw)	重量 Weight (kg)	长度 Length (mm)	宽度 Width (mm)	高度 Height (mm)
TLFXP-5	400	1500	≥ 25mm ²	6	5.9	850	4600	1480	1620
TLFXP-6	500			8		950			
TLFXP-6.5	600			12		1200			
TLFXP-8	650			15		1350			
TLFXP-10	810			22	6.3	1700			
TLFXP-12	1015			27	7.3	1950			
TLFXP-14	1215			32	9.2	2200			
TLFXP-16	1420	1800	37	10.7	2600	4900	2480		
TLFXP-18	1600	2000	42		3260	5100	2680		



环境友好体系



高新技术



ISO 9001质量管理体系认证



CE/UL



MA安全认证



环境管理体系



高新技术



ISO9001质量体系认证



CE认证



MA安全认证



迈格奈特
MAGNET MACHINERY



天力磁电
TIANLI MAGNET

永磁除铁系列

PERM-MAGNETIC SEPARATOR SERIES



www.dytlcdsb.com

RCYB 永磁除铁器

RCYB Perm-magnetic separator

适用范围

Scope of Application

适用于所有皮带输送机、振动给料机以及溜槽上方，铁质含量较少的场合。

Apply to all belt conveyor, vibrating feeder and chute above, the occasion of the iron content is less.

产品特点

Product Advantage

- 采用高矫顽力、高剩磁的永磁体钕铁硼等组成复合磁系，磁场强、吸力大。
- 安装简单、使用方便，运行可靠，免维护。
- 各项技术指标均符合JB/T8711-2006。
- Adopting high coercive force, high remanence of NdFeB permanent magnet to composite magnetic system, strong magnetic field and suction.
- Installation is simple, easy to use, reliable operation, maintenance free.
- Various technical indexes meet JB/T8711-2006

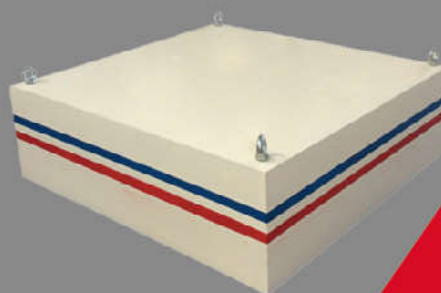
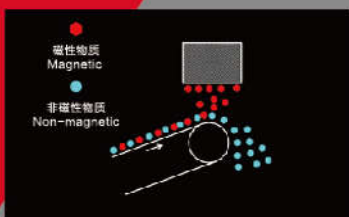
产品规格

Product Parameters

设备型号 Type	适应皮带宽度 Suitable belt width (mm)	适应皮带速度 Suitable belt speed	物料厚度 Material thickness ≤(mm)	额定悬挂高度 Rated lifting height ≤(mm)	输料皮带表面磁感应强度 Magnetic intensity (MT)
RCYB-4	400	≤2.5m/s	80	130	45
RCYB-5	500		100	150	50
RCYB-6	600		130	200	60
RCYB-6.5	650		150	200	70
RCYB-8	800		200	250	70
RCYB-10	1000		250	300	70
RCYB-12	1200		300	350	70

注：可选加强型T1、T2、T3产品，磁场强度分别为90MT、120MT、150MT。

Note: optional enhanced T1, T2 and T3 products, magnetic field intensity respectively for 90MT, 120MT, 150MT.



RCYB

RCYBII

RCYD 自卸式永磁除铁器

RCYD Self-cleaning perm-magnetic separator

产品简介

Product Introduction

RCYDII自卸式永磁除铁器是在RCYB悬挂式永磁除铁器的基础之上增加了机架、卸铁皮带、驱动电机、驱动滚筒等，卸铁方便，可连续工作。

RCYDII developed on the basis of RCYB magnetic separator ,and installed framework, discharging belt,drive motor,drive roller and so on.It' s easy to discharge the iron contamination and can working continuously.



适用范围

Scope of Application

适用于所有皮带输送机、振动给料机以及溜槽上方，铁质较多或者自动化程度较高的场合。

Applicable to all belt conveyor, vibration feeder and chute , and available to the occasion of more iron contamination or high degree of automation.



产品优点

Product Advantage

- 磁路采用计算机模拟设计，完善的双磁极结构，磁场强度高，梯度大，吸力大。
 - 高性能钕铁硼做磁源，磁能积高，不易退磁，八年退磁不超过5%。
 - 腰鼓形滚筒结构，具备自动纠偏功能，全密封轴承座，密封性好，能适应各种恶劣环境。
 - 皮带自动卸铁，可保障长期无故障连续运行。
- Adopting the computer simulation to design the Magnetic circuit,with perfect double magnetic pole structure,higher magnetic intensity,higher gradient,higher magnetic force.
 - High-performance NdFeB magnetic material as the magnetic source,High magnetic energy , not easy to demagnetize, and demagnetization does not exceed 5% in 8 years.
 - Waist drum-shaped drum structure, with automatic correction function, fully sealed bearing, good sealing, can adapt to a variety of harsh environments.
 - Automatic unloading belt , can guarantee long-term trouble-free continuous operation.



产品规格

Product Parameters

设备型号 Type	适应皮带宽度 Suitable belt width(mm)	适应皮带速度 Suitable belt speed	物料厚度 Material thickness ≤(mm)	额定悬挂高度 Rated lifting height≤(mm)	输料皮带表面 磁感强度 Magnetic intensity (MT)	驱动功率 Driving power(kw)
RCYD II-5	500	≤2.5m/s	80	150	63	1.5
RCYD II-6	600		125	200	63	1.5
RCYD II-6.5	650		150	200	70	1.5
RCYD II-8	800		200	250	70	2.2
RCYD II-10	1000		250	300	70	3.0
RCYD II-12	1200		300	350	70	4.0
RCYD II-14	1400		350	400	70	4.0
RCYD II-16	1600		400	450	70	5.5

注：可选加强型T1、T2、T3产品，磁场强度分别为90MT、120MT、150MT。
Note: optional enhanced T1, T2 and T3 products, magnetic field intensity respectively for 90MT, 120MT, 150MT.



RCYDII



RCYD

RCYK 铠装自卸式永磁除铁器

RCYK Armored type perm-magnetic separator

产品简介

Product Introduction

RCYK铠装自卸式永磁除铁器是在RCYDII自卸式永磁除铁器的基础上改进了卸铁皮带，采用了不锈钢防护铠装式皮带，有效的防止皮带的磨损和腐烂。

RCYK developed on the basis of RCYDII magnetic separator improved iron straps, adopt stainless steel anti-corrosion armor type belt, effectively prevent the belt from wear and decay.

适用范围

Scope of Application

适用于所有皮带输送机、振动给料机以及溜槽上方，铁质较多、铁磁性物质较杂、铁质比较尖锐的场合。

Applicable to all belt conveyor, vibration feeder and chute, and available to the occasion of more iron contamination or high degree of automation.

产品优点

Product Advantage

- 独特设计铠装式皮带，能有效防止尖锐铁磁性杂物对皮带的损害，运行经济。
 - 额定高度处磁场强度高、梯度大、吸力强劲。
 - 无需电励磁，省电节能，自动卸铁，运行方便。
 - 稀土钕铁硼永磁材料作为磁源，磁性能稳定可靠。
 - 具有皮带自动纠偏功能，特制密封轴承座，适应恶劣环境条件下工作。
 - 结构紧凑合理，维修保养方便，可长期无故障安全运行。
- Unique designed armored belt, can effectively prevent the damage to the belt from sharp ferromagnetic debris, running more economically.
- Highly rated in the magnetic field intensity is high, the gradient is large, strong suction.
- Without electric excitation so can save electrical power, automatic unloading iron made it easy to operate.
- Rare earth NdFeB permanent magnet material as a magnetic source, providing stable and reliable magnetic intensity.
- With belt automatic correction function, specially sealed bearing, to adapt to harsh environmental conditions.
- Compact and reasonable structure, easy maintenance, long-term safe operation.

产品规格

Product Parameters

设备型号 Type	适应皮带宽度 Suitable belt width(mm)	适应皮带速度 Suitable belt speed	物料厚度 Material thickness ≤(mm)	额定悬挂高度 Rated lifting height ≤(mm)	输料皮带表面磁感应强度 Magnetic intensity (MT)	驱动功率 Driving power(kw)
RCYK-5	500	≤4.5m/s	80	150	70	1.5
RCYK-6	600		125	200	70	1.5
RCYK-6.5	650		150	200	70	1.5
RCYK-8	800		200	250	70	2.2
RCYK-10	1000		250	300	70	3.0
RCYK-12	1200		300	350	70	4.0
RCYK-14	1400		350	400	70	4.0
RCYK-16	1600		400	450	70	5.5

注：可选加强型T1、T2、T3产品，磁场强度分别为90MT、120MT、150MT。
Note: optional enhanced T1, T2 and T3 products, magnetic field intensity respectively for 90MT, 120MT, 150MT.



RCYQ 轻型自卸式永磁除铁器

RCYQ Light-weight perm-magnetic separator

产品简介

Product Introduction

RCYQ 轻型自卸式永磁除铁器是在 RCYD II 自卸式永磁除铁器的基础上改进了电机的安装方式, 采用了斜齿轮蜗轮蜗杆减速机, 使整机更加轻便, 美观, 运行更加的灵活轻巧。

RCYQ developed on the basis of RCYDII magnetic separator, with improved installation of motor, and adopting the slope worm reducer to made the unit more compact and beauty, can running more flexible and lightweight.

适用范围

Scope of Application

适用于所有皮带输送机、振动给料机以及溜槽上方铁质较多的场合除铁, 一般配置在再生资源行业或者移动破碎分选站上。

Applicable to all belt conveyor, vibration feeder and chute, and available to the occasion of more iron contamination. Normally you can see them being used in the recycling industry or the mobile crusher equipment.

产品优点

Product Advantage

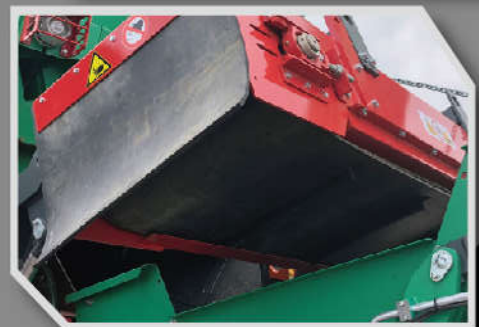
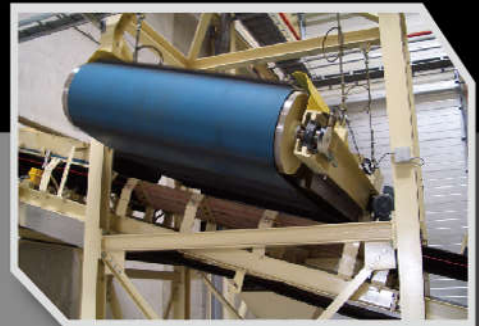
- 总体尺寸小, 可称为轻型永磁带式除铁器, 长度、高度分别是 RCYDII 的: 70%、65%。
- 噪音低, 并能连续吸、弃铁。
- 重量轻, 平均不到 RCYDII 型重量的 75%。
- 结构紧凑, 构件少, 便于吊装, 便于维修管理, 经济实用。
- The overall size is small, can be called light-weight type, its length and height were only 70%, 65% of the RCYDII model magnetic separator.
- Low noise, and can continue to suck, abandoned iron.
- Light weight, less than 75% of the weight of RCYDII.
- Compact structure, less components, easy to lift, easy maintenance management, economical and practical.

产品规格

Product Parameters

设备型号 Type	适应皮带宽度 Suitable belt width(mm)	适应皮带速度 Suitable belt speed	物料厚度 Material thickness ≤(mm)	额定悬挂高度 Rated lifting height≤(mm)	输料皮带表面 磁感应强度 Magnetic Intensity (MT)	驱动功率 Driving power(kw)
RCYQ-5	500	≤ 2.5m/s	80	150	70	
RCYQ-6	600		125	200		
RCYQ-6.5	650		150	200		
RCYQ-8	800		200	250		
RCYQ-10	1000		250	300		
RCYQ-12	1200		300	350		
RCYQ-14	1400		350	400		
RCYQ-16	1600		400	450		

注: 可选加强型 T1、T2、T3 产品, 磁场强度分别为 90MT、120MT、150MT。
Note: optional enhanced T1, T2 and T3 products, magnetic field intensity respectively for 90MT, 120MT, 150MT.



RCYQ



RCYQY

RCYQII轻型自卸式永磁除铁器

RCYQII Light-weight perm-magnetic separator

产品简介

Product Introduction

RCYQII轻型自卸式永磁除铁器是在RCYQ轻型自卸式永磁除铁器的基础上进行了改进，皮带采用PVC皮带，磁源更加的均匀，有效针对于再生资源中的平皮带中的除铁。

RCYQII developed on the basis of RCYQ magnetic separator improved the belt, use PVC leather belt, the magnetic source is more uniform, effective for renewable resources of iron in the flat belt.

适用范围

Range of Application

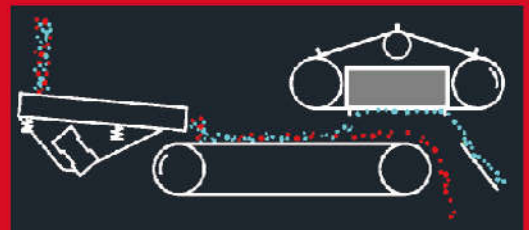
主要针对于再生资源中轮胎粉碎生产线、电子垃圾回收生产线中比较细小的铁质磁选，可适用较宽的皮带，为客户节约成本。

Mainly for the renewable resources in tyre crushing line, e-waste recycling line in relatively small iron magnetic separation, can be used on wide belt, cost savings for customers.

产品优点

Product Advantage

- 采用PVC卸铁皮带，运行更加平稳、轻便、噪音低。
- 可适用再生资源中较宽的皮带输送机，为客户节约采购成本。
- 磁性可强弱搭配，分选效果好。
- 设备更加的轻巧、安装简单。
- Use PVC discharge iron straps, run more smoothly, lightweight, low noise.
- Mixer applicable wide belt conveyor in the renewable resources, saving purchasing cost for the customer.
- Mixer can match strength, magnetic separation effect is good.
- Pieces of equipment more light and simple installation.





环境管理体系



高新技术



ISO9001质量管理体系认证



CE认证



MA安全认证



MAGNET MACHINERY



TIANLI MAGNET

电磁除铁系列

ELECTROMAGNETIC SEPARATOR SERIES



www.dytldcsb.com

RCOB 干式电磁除铁器

RCOB Dry type Electromagnetic Separator

产品简介

Product Introduction

干式电磁除铁器是以电磁线圈为磁源、结构简单、通电即产生磁性，卸铁时断电即可，客户可搭配行走小车使用。

Dry type electromagnetic separator with the simple structure and its magnetic source is from the electromagnetic coil. when the electrical power been put through, the magnetic property will be generated, and when the power cut off, it will be disappear. If work with the trolley the effect would be better.

适用范围

Scope of Application

适用于所有皮带输送机、振动给料机以及溜槽上方，铁杂质不多的场合。

Applicable to all belt conveyor, vibration feeder and chute, and available to the occasion of less iron contamination.

产品优点

Product Advantage

- 磁路采用计算机模拟设计，透磁深度大，磁力强。
 - 内部采用电工专用树脂浇注，自冷式全密封结构，防尘、防雨、耐腐蚀。
 - 波翅型散热片，使散热面积大大增加，有效控制了温升。
 - 可有效吸除混杂在非磁性物料中0.1-30公斤的铁磁性物质。
- Adopting the computer simulation to design the Magnetic circuit, with deeper penetration, higher magnetic force.
 - Special resin cast inside, self-cooled full-sealed structure, anti-dust, anti-rain, corrosion resistance.
 - Wave fin type heat sink provide the larger area to decline the heat, effectively control the temperature rise.
 - Can effectively remove the ferromagnetic material weighed between 0.1-30 kg mixed in the non-magnetic materials.

产品规格

Product Parameters

所有圆盘式除铁器规格 Specification of all dry type electromagnetic separator

设备型号 Type	适应皮带宽度 Suitable belt width (mm)	适应皮带速度 Suitable belt speed	物料厚度 Material thickness ≤(mm)	额定悬挂高度 Rated lifting height ≤(mm)	输料皮带表面磁感应强度 Magnetic intensity (MT)	电磁冷却方式 cooling way	电磁励磁功率 excitation power (kw)
RCDB-5	500	≤4.5m/s	80	150	60	自然冷却 Natural cooling	1.0
RCDB-6/6.5	600/650		125/150	200	60/70		1.6/2.0
RCDB-8	800		200	250	70		3.6
RCDB-10	1000		250	300	70		5.0
RCDB-12	1200		300	350	70		6.8
RCDB-14	1400		350	400	70		9.0
RCDB-16	1600		400	450	70		11.6

注：可选加强型T1、T2、T3产品，磁场强度分别为90MT、120MT、150MT。加强型产品励磁功率和重量有所增加。

Note: optional enhanced T1, T2 and T3 products, magnetic field intensity respectively for 90MT, 120MT, 150MT. And the enhanced product excitation power and weight increase.



RCOB



RCOBII



RCDC电磁风冷自卸式电磁除铁器

RCDC Air-Cleaning Electromagnetic Separator

适用范围

Range of Application

适用于钢铁厂、水泥厂、电厂等场合。多用于矿渣除铁和保护辊压机、立磨、破碎机等重要设备。适用于环境条件较好的场合。

Applicable to steel plant, cement plant, power plant and other occasions. It is mainly used in slag removal and protection roller press, vertical mill, crusher and other important equipment. It is suitable for better environmental conditions.



技术特点

Technical Features

- 磁路采用计算机模拟设计，透磁深度大，磁力强。
- 特殊的风道设计，轴流风机强迫风冷，风量大，风压高，使线圈散热快，温升低，冷热态磁场差异小。
- 线圈采用先进的浸漆绝缘及固化处理技术，保护线圈不受粉尘和有害气体侵蚀，提高整机的绝缘性能，保障长期连续工作不老化。
- 自动卸铁，维护简便，滚筒腰鼓形结构，具备皮带自动纠偏功能，特制全密封轴承座，可实现长期无故障运行。
- 产品配套性好，整流设备功能齐全，具有手动和集控功能，能满足多种场合的使用要求。

● The magnetic circuit is designed by computer simulation with large depth and strong magnetic force.

● Special air duct design, forced air cooling by axial flow fan, large wind amount, high wind pressure, fast heat dissipation of coil, low temperature rise, small difference between cold and hot magnetic fields.

● The coil adopts advanced paint dip insulation and solidification treatment technology to protect the coil from dust and harmful gas erosion, improve the insulation performance of the whole machine, and ensure the long-term continuous operation without aging.

● Automatic discharge of iron, easy to maintain, drum waist drum structure, with automatic belt rectification function, special fully sealed bearing seat, can achieve long-term fault-free operation.

● The products are well equipped and have complete functions of the rectifier equipment. They have manual and centralized control functions and can meet the requirements for a variety of occasions.

● Automatic discharge of iron, easy to maintain, drum waist drum structure, with automatic belt rectification function, special fully sealed bearing seat, can achieve long-term fault-free operation.

● The products are well equipped and have complete functions of the rectifier equipment. They have manual and centralized control functions and can meet the requirements for a variety of occasions.



RCDD电磁自冷自卸式除铁器

RCDD Self-Cleaning Electromagnetic Separator

产品简介

Product Introduction

RCDD电磁自冷自卸式除铁器是在RCDB干式电磁除铁器的基础之上增加了机架、卸铁皮带、驱动电机、驱动滚筒等；在卸铁时无需断电，可连续排铁，电磁自冷自卸式除铁器可搭配金属探测仪一起使用，使整个工作过程更加节能省电。

RCDD developed on the basis of RCDB electromagnetic separator, and installed framework, discharging belt, drive motor, drive roller and so on. The iron-unloading need not to be powered off, and can continuous working. It can be used with metal detectors together, so that the whole process more energy efficient.



适用范围

Scope of Application

适用于所有皮带输送机、振动给料机以及溜槽上方，铁质较多或者自动化程度较高的场合。

Applicable to all belt conveyor, vibration feeder and chute, and available to the occasion of more iron contamination or high degree of automation.



产品特点

Product Advantage

- 磁路采用计算机模拟设计，透磁深度大，磁力强。
- 自冷式全密封结构，防尘、防雨、防盐雾、耐腐蚀。
- 自动卸铁、维护简便、滚筒腰鼓形结构，具备皮带自动纠偏功能，可实现长期无故障运行。
- 产品配套性好，整流设备功能齐全，具有手动和集控功能，能满足多种场合的使用要求。
- 可有效吸除混杂在非磁性物料中0.1~30公斤的铁磁性物质。

- Adopting the computer simulation to design the Magnetic circuit, with deeper penetration, higher magnetic force.
- Self-cooled full-sealed structure, anti-dust, anti-rain, corrosion resistance.
- Automatic unloading iron, easy maintenance,
- The drum with waist drum structure, and automatic belt correction function, can achieve long-term trouble-free operation.
- Product matching is good, rectifier equipment is complete, with manual and centralized control function, to meet the requirements of a variety of occasions.
- Can effectively remove the ferromagnetic material weighed between 0.1-30 kg mixed in the non-magnetic materials



产品规格

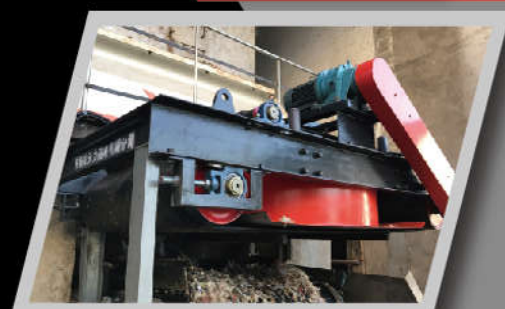
Product Parameters

所有圆盘式除铁器规格 Specification of all dry type electromagnetic separator

设备型号 Type	适应皮带宽度 Suitable belt width (mm)	适应皮带速度 Suitable belt speed	物料厚度 material thickness ≤ (mm)	额定悬挂高度 Rated lifting height ≤ (mm)	输料皮带表面磁感应强度 magnetic field intensity ≥ (MT)	电磁冷却方式 cooling way	电磁励磁功率 excitation power (kw)
RCDB-5	500	≤ 4.5m/s	80	150	60	自然冷却 Natural cooling	1.0
RCDB-6	600		125	200	6		1.6
RCDB-6.5	650		150	200	70		2.0
RCDB-8	800		200	250	70		3.6
RCDB-10	1000		250	300	70		5.0
RCDB-12	1200		300	350	70		6.8
RCDB-14	1400		350	400	70		9.0
RCDB-16	1600		400	450	70		11.6

注：可选加强型T1、T2、T3产品，磁场强度分别为90MT、120MT、150MT。加强型产品励磁功率和重量有所增加。

Note: optional enhanced T1, T2 and T3 products, magnetic field intensity respectively for 90MT, 120MT, 150MT. And the enhanced product excitation power and weight increase.



RCDE油浸自冷式电磁除铁器

RCDE Oil immersion self-cooled electromagnetic Separator

适用范围

Scope of Application

适用于大型火电厂、输煤港口、煤矿、矿山、建材等对除铁要求特别高的场所，可在粉尘、潮湿、海边盐雾腐蚀严重等恶劣环境下正常工作，是国际上最常用的电磁除铁器冷却方式。

It is suitable for large thermal power plant, coal transport port, coal mine, mine, building materials and other places with high requirements on iron removal. It can work normally under the severe environment such as dust, humidity and severe corrosion by sea salt mist. It is the most commonly used electromagnetic iron removal cooling method in the world.



技术特点

Product Advantage

- 磁路采用计算机模拟设计，透磁深度大，磁力强。
- 励磁线圈特殊设计，具有纵向和横向油道，极利于热量传到变压器中，有效地降低线圈的温度
- 线圈绝缘F级以上，选用新型高温导热油，油路设计合理，通畅无阻，循环快，散热效率高。
- 线圈经特制环氧树脂浸泡、固化，提高了整机的绝缘性能，全密封结构，防尘、防雨、防盐雾、耐腐蚀。
- 波纹型散热翅片，大幅度提高散热面积，有效控制了温升。
- 制造采用国际蒸发冷却电磁除铁器生产工艺，采用德国产检漏仪进行了检漏，绝对控制和杜绝了渗漏问题（年泄漏量5毫克可检测到）。

- The magnetic circuit is designed by computer simulation with large depth and strong magnetic force.
- Special excitation coil design, with vertical and horizontal oil, very conducive to heat to the transformer, effectively reduce the temperature of the coil
- With coil insulation above grade F level, a new type of high-temperature heat conduction oil is selected. The oil road is reasonable, unobstructed, quick circulation and high heat dissipation efficiency.
- The coil is soaked and solidified by special epoxy resin, which can improve the insulation performance of the whole machine, complete sealing structure, dustproof, rain proof, salt spray proof and corrosion-proof.
- The corrugated fin is used to greatly increase the heat dissipation area and effectively control the temperature rise.
- Manufactured by international evaporation-cooled electromagnetic iron remover technology, mechatronics made in Germany are used for leak detection, with absolute control and elimination of leakage problems (Annual leakage is detectable at 5mg)



RCDF油冷自卸式电磁除铁器

RCDF Oil - Cooling Self - Discharging Electromagnetic Iron Remover

适用范围

Range of Application

用于破碎机前及输送机皮带上的任何物料除铁，可适用于各种恶劣的环境条件。彻底解决普通除铁器存在的散热、吸力和适应环境三大难题。

Any material on the belt of the crusher and conveyor can be used to remove iron, and can be used in a variety of severe environmental conditions. The three major problems of heat dissipation, suction and environment adaptation of common iron remover are solved thoroughly.

技术特点

Technical Features

- 磁路采用计算机模拟设计，透磁深度大，磁力强。
- 励磁线圈特殊设计，具有纵向和横向油道，极利于热量传到变压器中，有效地降低线圈的温度。
- 线圈经特制环氧树脂浸泡、固化，提高了整机的绝缘性能，全密封结构，防尘、防雨、防盐雾、耐腐蚀。
- 波纹型散热翅片，大幅度提高散热面积，有效控制了温升。
- 自动卸铁，维护简便，滚筒腰鼓形结构，具备皮带自动纠偏功能，特制全密封轴承座，可实现长期无故障运行。
- 产品配套性好，整流设备功能齐全，具有手动和集控功能，能满足多种场合的使用要求。

● The magnetic circuit is designed by computer simulation with large depth and strong magnetic force.

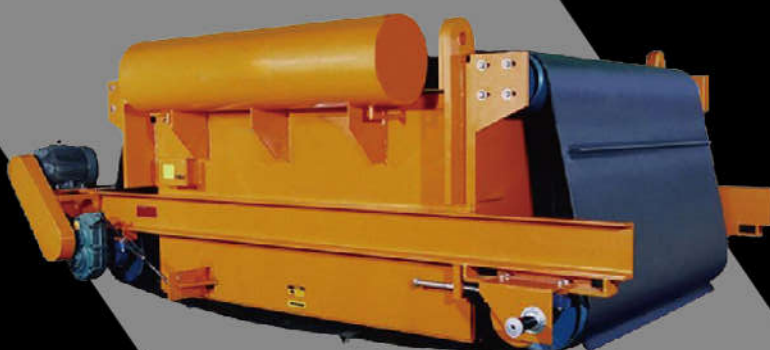
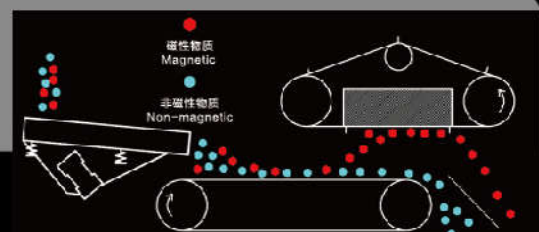
● The coil is specially designed with longitudinal and transverse oil channels, which facilitate the transfer of heat to the transformer and effectively reduce the coil temperature.

● The coil is soaked and solidified by special epoxy resin, which can improve the insulation performance of the whole machine, complete sealing structure, dustproof, rain proof, salt spray proof and corrosion-proof.

● The corrugated fin is used to greatly increase the heat dissipation area and effectively control the temperature rise.

● Automatic discharge of iron, easy maintenance, drum waist drum structure, with automatic belt rectification function, special fully sealed bearing seat, can achieve long-term fault-free operation.

● The products are well equipped and have complete functions of the rectifier equipment. They have manual and centralized control functions and can meet the requirements for a variety of occasions.



上吸式磁滚筒 magnetic drum

TLSXG(O)电磁上吸式磁滚筒 TLSXG(O)electromagnetic drum



产品优点

Product Advantage

- 1.选择筒式磁选机可以分选出更高纯度的铁磁物质。
- 2.采用上吸式的安装方式，分离出的大件铁质干净，不带任何的非磁杂质。
- 3.滚筒表面带有滚筒保护装置，较传统的自卸式的除铁器相比，有效的减少尖锐铁质对其的伤害，有效的防止大件铁质对皮带的拉张磨损，延长使用寿命，维护成本小，降低运行成本。
- 4.顺着皮带运行方向安装，适用于任何角度的皮带机安装。

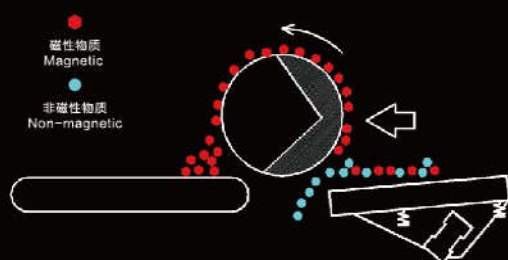
- 1.Select drum magnetic separator can be extracted to higher purity ferromagnetic substance.
- 2.Adopt the suction on the installation, the iron be separated is clean, without any non magnetic impurities.
- 3.Roller surface has protection device, compared with the traditional self-unloading type magnetic separator, effectively reduce sharp iron damage to equipment, and prevent the big iron wear of belt tension, extend the service life, low maintenance costs, reduce running cost.
- 4.Along the belt running direction installation, reducing the installation space, applicable to any Angle belt conveyor installation.

产品简介

Product information

- 电磁式和永磁型
- 用于加工各类有色金属
- 自动地分离铁磁性物质
- 适用于废钢，含铁量大和有尖锐铁件的物料
- Electromagnetic type and perm-magnet type.
- For processing from many nonferrous metals.
- Automatic continuous separation of ferromagnetic substance.
- Suitable for steel scrap ,separation for large amount of iron and iron sharp materials

TLSXG永磁上吸式磁滚筒 TLSXG perm-magnetic drum



产品规格

Product parameters

所有的上吸式磁滚筒规格 Specifications of all type magnetic drum

型号 Type	适应皮带机宽度(mm) Suitable belt width	滚筒尺寸(mm) Size of roller	电机功率(kw) Motor power	励磁功率(kw) Excitation power
TLSXG-4	400	Φ320*400	0.75	1.5
TLSXG-5	500	Φ400*500	1.1	2.0
TLSXG-6	600	Φ500*600	1.5	2.8
TLSXG-6.5	650	Φ500*650	1.5	3.0
TLSXG-8	800	Φ600*800	2.2	5.0
TLSXG-10	1000	Φ800*1000	3.0	7.5
TLSXG-12	1200	Φ800*1200	4.0	10.0
TLSXG-14	1400	Φ1000*1400	4.0	14.0
TLSXG-16	1600	Φ1200*1600	5.5	15.0

注：外形可根据现场定制，磁场强度根据物料性质定制。

Note: shape can be customized according to the site, custom magnetic field intensity according to the material properties.



环境管理体系



高新技术企业



ISO9001质量管理体系认证



CE认证



MA安全认证

TLRCT上部进料磁滚筒

TLRCT Upper Feed Magnetic Drum

产品简介

Product Introduction

本产品是经振动给料机从磁选滚筒上部进料的一种半磁敞开式结构磁选设备。磁场强度1800-8000Gs可选，吸铁能力大，分选效果好。

This product is a kind of semi-magnetic open-type structure magnetic separator, which is fed by vibrating feeder from the upper part of magnetic drum. The magnetic field strength of 1800-8000Gs can be selected.

适用范围

Scope of Application

本设备适用于经破碎后的各种块状或大颗粒状的物料中去除铁磁性物质。

The equipment is suitable for removing ferromagnetic materials in various bulk or large granular materials after crushing.

产品优点

Product Advantage

- 滚筒采用有效的防护装置，防止筒皮磨损。
 - 磁场强度高、磁场的范围大、磁滚筒表面从1800-8000Gs根据客户实际情况选定。
 - 自动分离、连续作业、处理量大、回收率高。
 - 结构简单、运行可靠、易于安装。
- Drum adopt effective protective device, to prevent the cylinder wear.
 - Strong magnetic field intensity, the range of magnetic field is big, magnetic drum mixer surface from 1800-8000Gs selected according to the customer.
 - Automatic separation, continuous operation, large capacity, high recovery rate.
 - Pieces of simple structure, reliable operation, easy to install.

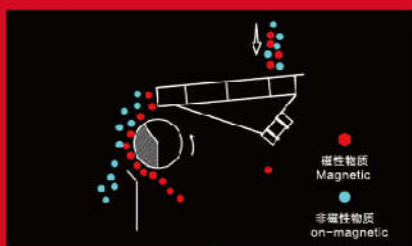
产品规格

Product Parameters

型号 Model	滚筒长度 Drum length (mm)	滚筒直径 Drum diameter (mm)	磁感应强度 Magnetic intensity (GS)	电机功率 motor power (kw)	振动功率 Vibrator power(kw)
TLRCT-32/50	500	φ 320	1800-8000	1.5	0.4
TLRCT-32/60	600				0.4
TLRCT-32/80	800			2.2	0.8
TLRCT-32/100	1000				0.8
TLRCT-32/120	1200			3.0	1.1
TLRCT-32/140	1400				1.5

注：滚筒型号、数量、磁感应强度根据处理量和物料性质量身定制。

Note: Drum type, quantity, magnetic intensity can be tailored according to the amount of processing and material properties.



环境管理体系

高新技术

ISO9001质量管理体系认证

CE认证

MA安全认证

TLGA干式磁选机

TLGA Dry Type Magnetic Separator

产品简介

Product Introduction

本产品是经振动给料机从磁选滚筒上部进料的一种半磁封闭式结构磁选设备。磁场强度800-8000Gs可选，吸铁能力大，分选效果好。

This product is a kind of Semi-magnetic closed-type structure magnetic separator, which is fed by vibrating feeder from the upper part of magnetic drum. The magnetic field strength of 800-8000Gs can be selected. The magnetic field strength of 800-8000Gs can be selected.

适用范围

Scope of Application

本产品适用于经细破后或筛分后粉尘较多的各种细小颗粒的物料中去除铁磁性物质。

This product is applicable to remove ferromagnetic materials with various fine particles after fine breaking or screening.

产品特点

Product Advantage

永磁磁系，耗能省。设备根据情况，选用单级或者多级磁选，分选效果好。

Permanent magnetic system can save the energy. Follow the specific situation to selected Single or multi-stages magnetic separation guarantee the separating effect.

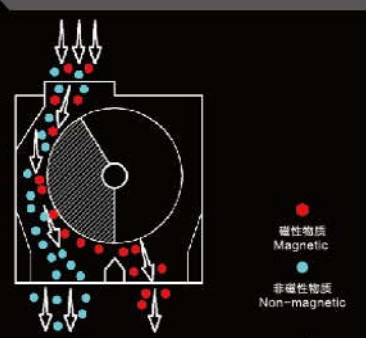
产品规格

Product Parameters

型号 Model	滚筒长度 Drum length (mm)	滚筒直径 Drum diameter (mm)	滚筒数量 Drum quantity (pcs)	物料粒度 Material size ≤ (mm)	电机功率 motor power (kw)	磁感应强度 Magnetic intensity (GS)	滚筒转速 Drum speed (r/min)
TLGA-3240-I	400	φ320	1	5	0.75	800-8000	17-28
TLGA-3240-II			2	6	0.75		
TLGA-3260-I	600		1	5	0.75		
TLGA-3260-II			2	6	0.75		
TLGA-3280-I	800		1	5	1.1		
TLGA-3280-II			2	6	1.1		
TLGA-4060-I	600	φ400	1	5	1.1		
TLGA-4060-II			2	6	1.1		
TLGA-4080-I	800		1	6	1.1		
TLGA-4080-II			2	8	1.5		

注：滚筒型号、数量、磁感应强度根据处理量和物料性质量身定制。

Note: Drum type, quantity, magnetic intensity can be tailored according to the amount of processing and material properties.



TLCG传感式金属分选机

TLCG Metal Sorter

产品简介

Product Introduction

天力TLCG传感式金属分选机，采用高灵敏传感器技术识别/检测出废料中的金属颗粒，然后通过压缩空气喷嘴将金属颗粒从废料中分离开来，从而达到实现两种不同性质物料分离的目的。

TLCG Metal Sorter, based on high sensitivity sensor technology to identify/detect the metal particles in the waste material, and then the metal particles are separated from the waste material through the compressed air nozzle, so as to achieve the purpose of separating two materials with different properties.

应用行业

Application Industry

- 混合包装垃圾、RDF、废纸、PET/PE回收；
 - 金属回收及提纯；
 - 电子垃圾回收、有色金属加工、线缆回收；
 - 汽车拆解回收、CRT玻璃、工业/生活垃圾、RDF生产。
- Mixed packaging waste, RDF, waste paper, PET/PE recycling;
 - Metal recovery and purification;
 - Electronic waste recycling, non-ferrous metal processing, cable recycling;
 - Automotive disassemble recycling, CRT glass, industrial/household waste, RDF production.

传感器配置

Sensor Configuration

- 采用集成特殊的图像处理技术的高灵敏电磁（EM）传感器，基于材料电导率进行识别，可实现在高产量下获得最高纯度。- EM3
High sensitivity electromagnetic (EM) sensor based on material conductivity identification is adopted with special integrated image processing technology to achieve the highest purity in high yield. - EM3
- 电磁（EM）传感器和近红外（NIR）光谱传感器的集成，可基于材料电导率及其独特光谱特征进行识别。- EM3-NIR1 ("poly")
The integration of the electromagnetic (EM) sensor and the near-infrared (NIR) spectrum sensor can be identified based on the material conductivity and its unique spectral features. - em3-nir1 ("poly")

备注：

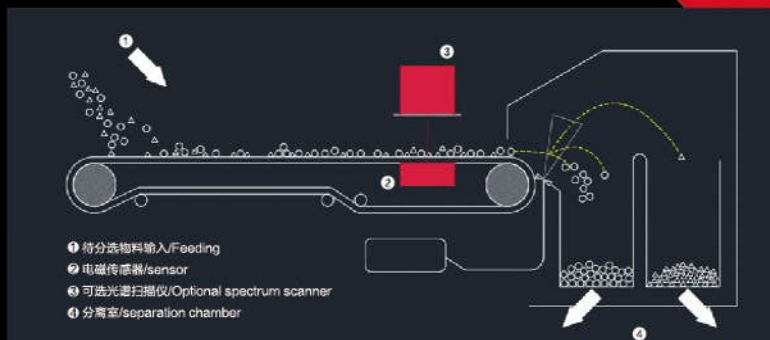
分辨率：两种可选的电磁传感器分辨率为卷径25mm和12.5mm，电磁传感器可探测的最小金属尺寸为1-2mm

Remark:

Resolution: the resolution of the two optional electromagnetic sensors is 25mm and 12.5mm, and the minimum metal size detected by the electromagnetic sensor is 1-2mm

分选原料图

Sorting Drawings



产品优点

Product Advantages

- 提升产品纯度（5-15%）；
- 最大化金属回收
- 稳定的分选性能
- 减少压缩空气消耗（15-25%）
- 附件过程监控
- Improve product purity (5-15%);
- Maximize metal recycling
- Stable separation performance
- Reduce compressed air consumption (15-25%)
- Annex process monitoring

传感器的典型应用

Typical Applications Of Sensors

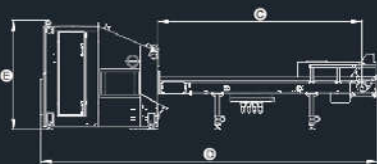
典型应用/Typical applications		传感器类型 sensor type	
		A	B
各类金属回收/metal recycling	回收所有金属 recycle all kinds of metals	●	●
不锈钢/stainless steel	获得高纯度的不锈钢物料 get high purity stainless steel	●	●
线缆回收cable recycling	获得高纯度的绝缘铜线物料 recycle all kinds of cables		○
塑料回收rubber recycling	回收所有可见塑料 recycle all kinds of rubbers		○
塑料分选rubber sorting	分选各种不同材料塑料，如PP/PS/PE,ABS/ABS-PC sorted all kinds of rubbers,like PP/PS/PE,ABS/ABS-PC	○	○
特殊应用special application	金属提纯和杂质剔除 metal impurity and remove contamination	○	○

产品规格

Technical Parameters

阀组类型 和喷嘴间距 Valve Type and nozzle spacing	TLCG-6	TLCG-12	TLCG-18	TLCG-24	TLCG-30
TS1500 /6.25mm	48阀门 /valve	96阀门 /valve	144阀门 /valve	192阀门 /valve	240阀门 /valve
TS400 /6.25mm	96阀门 /valve	192阀门 /valve	288阀门 /valve	384阀门 /valve	480阀门 /valve
TS200 /6.25mm	96阀门 /valve	192阀门 /valve	288阀门 /valve	384阀门 /valve	480阀门 /valve

型号 Model	A (mm)	B (mm)	C (mm)	D (mm)	E (mm)	重量 Weight(kg)	能耗 Power(kw)
TLCG-6	600	1400	4000	6420	2084	2580	4.3
TLCG-12	1200	2000				3550	4.3
TLCG-18	1800	2600				4360	6.1
TLCG-24	2400	3200			2115	5760	6.6
TLCG-30	3000	3800				6520	8.1



环境管理体系

高新技术

ISO9001质量管理体系

CE认证

MA安全认证

TLCC 负压风力比重分选机

TLCC Negative Pressure Wind Gravity Separator (Air Separator)

适用范围

Application Scope

本设备利用负压吸附原理，根据固废中不同组分物质之间表面积、比重等物理属性的差异实现轻重物质的分离，常与振动筛、星盘筛、弹跳皮带机等设备配合使用。

本设备不会产生污泥或导致类似的水污染，而且本设备还可通过进一步配置除尘装置确保无粉尘生产。

This equipment makes use of the principle of negative pressure adsorption to realize the separation of heavy and heavy materials according to the differences of physical properties such as surface area and specific gravity among different components in solid waste.

The equipment will not generate sludge or cause similar water pollution, and the equipment can be further equipped with a dust removal device to ensure no dust production.

产品优点

Product Advantage

适用范围广，建筑垃圾、园林垃圾、原生垃圾、陈腐垃圾等固废的轻重物质分离皆可使用；通过进一步配置除尘设备可实现无粉尘生产，也可有效控制该环节的臭气扩散，尤其胜任对工作环境的粉尘控制及臭气控制有严格要求的情况；本设备主体采用不锈钢或锰钢等优质材料制造，经久耐用；设备安装调节简单、方便，运行稳定、可靠，故障率低，维护成本低。

It is applicable to a wide range of applications. The heavy and light material separation of solid waste such as construction waste, garden waste, native waste and stale waste can be used.

By further disposing the dedusting equipment, the production of no dust can be realized and the diffusion of the odor can be effectively controlled.

The main body of the equipment USES stainless steel or manganese steel and other quality materials, durable;

Equipment installation and adjustment simple, convenient, stable and reliable operation, low fault rate, low maintenance cost.

产品规格

Product Parameters

(有多种规格系列，具体规格及参数可根据实际项目工艺需要选择或做非标设计)

1. 总功率55-90Kw。
2. 处理能力范围0-200 m³/h

(there are a variety of specifications, and the specific specifications and parameters can be selected or non-standard design according to actual project process requirements)

1. Total power: 55-90kw.
2. Processing capacity range 0-200 m³/h



滚筒筛 TLGTS Drum Screen

产品简介

Product Introduction

滚筒筛主要适用于各种固废的颗粒大小分级处理，工艺简单，适用于生活垃圾、建筑垃圾、废金属，以及矿山、电厂、建材、冶金等行业。

The drum screen is mainly suitable for the grading treatment of solid waste of various sizes, the process is simple, including household waste, construction waste, waste metal, and mining, power plant, building materials, metallurgy and other industries.

产品优点

Product Advantage

- 结构坚固、使用寿命长，驱动轮采用耐磨橡胶，振动和噪音极小。
- 筛分效率高，产量大，工艺简便，安装、维护方便，操作方便；
- 占用空间小，投资成本降低，运转平稳可靠；
- 功率小，能耗低，筛体内配有清扫装置，筛孔不易被堵塞；
- 对物料的适应能力强，粘性、湿度大、脏、杂等各种性质的物料都能筛分，对垃圾分选可增加破袋装置。

● drum screens have solid construction, and enjoy long life time. The driving wheels are of friction-resistant rubber and yield very small vibration and very small noise.

● High screening efficiency and large output, the technology is simple, the installation and maintenance is convenient, the operation is convenient;

● Small space required, low investment cost, stable and reliable running;

● Low power, low energy consumption, with cleaning device equipped inside, the screens holes are not easy to be blocked;

● Strong adaptability to all kinds of materials including materials with high viscosity or high humidity, dirt materials and mixed materials. Bag shredding device can be added if necessary.

产品规格

Product Parameters

型号 Model	直径 diameterh (mm)	长度 lengt (mm)	产量 output(t/h)	转速 speed (r/min)	倾斜度 inclination(%)	功率 power(kw)
TLGTS-1109	φ 1100	9000	9	5-18	3-6	11
TLGTS-1201	φ 1200	10000	15			15
TLGTS-1512	φ 1500	12000	18			22
TLGTS-1815	φ 1800	15000	25			37
TLGTS-2016	φ 2000	16000	30			45
TLGTS-2216	φ 2200	16000	35			45
TLGTS-2220	φ 2200	20000	40			45

注：不同物料的筛分性能将出现差异。

Note: sieving performance of different materials will be different.



环境管理体系

高新技术企业

ISO9001质量管理体系认证

CE认证

MA安全认证

垃圾发电焚烧炉渣分选工艺

Waste Power Generation Incineration Slag Sorting Process



整线服务

EPC Service

天力专业打造以“磁选”和“涡电流分选”为核心的焚烧炉渣分选整体解决方案。从破碎到筛分，再到核心的磁选机以及涡电流分选机，天力不仅提供高效分选的设备，更为客户提供流程设计，设备选型，生产线布局，设备安装调试等一站式服务。

TIANLI professional creates the whole solution of incineration slag separation with "magnetic separation" and "eddy current separation" as the core. From crushing to screening, to core magnetic separators and eddy current separators, TIANLI not only provides efficient separation equipment, but also provides one-stop services such as process design, equipment selection, production line layout, equipment installation and debugging.

整线现场

EPC Plant

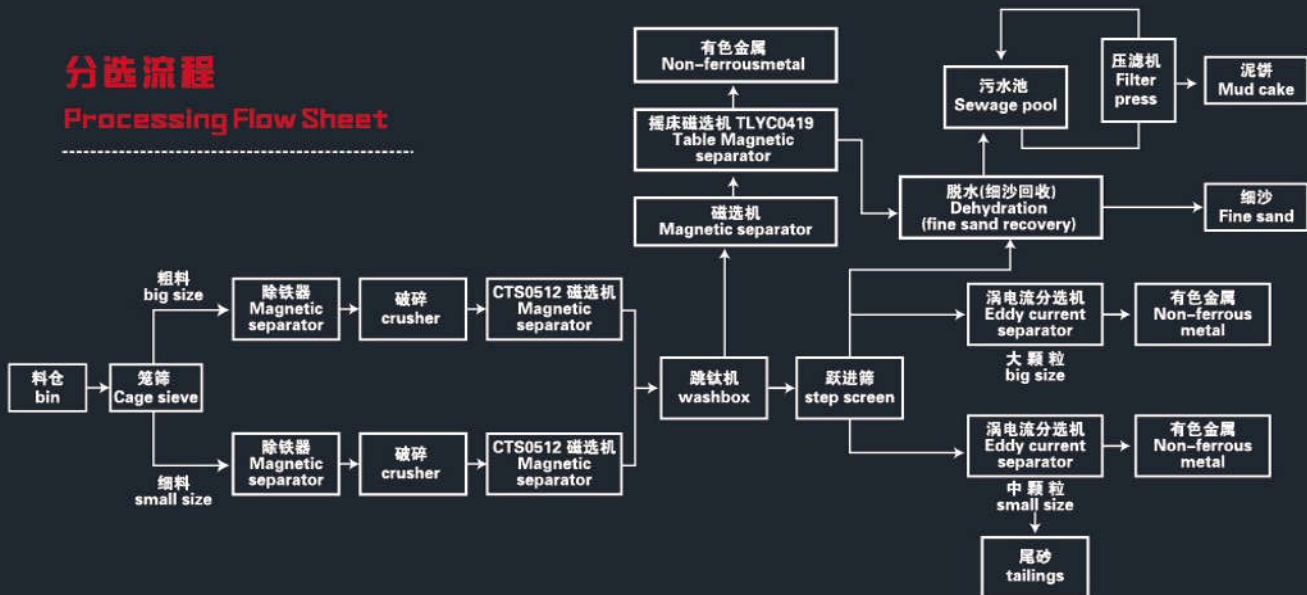


焚烧炉渣分选整线
Incinerator Slag Processing Line

物料 Material	渣 slag	石子 scree	砂 sand	玻璃 glass	陶瓷 ceramics	铝 aluminum	铁 iron	锌 zinc	银 silver	铜 copper	金 gold
比重 proportion (t/m ³)	1.2	2.2	2.3	2.5	2.7	2.7	7.8	7.1	10.5	8.9	19.3

分选流程

Processing Flow Sheet



现场图 Site Photo

