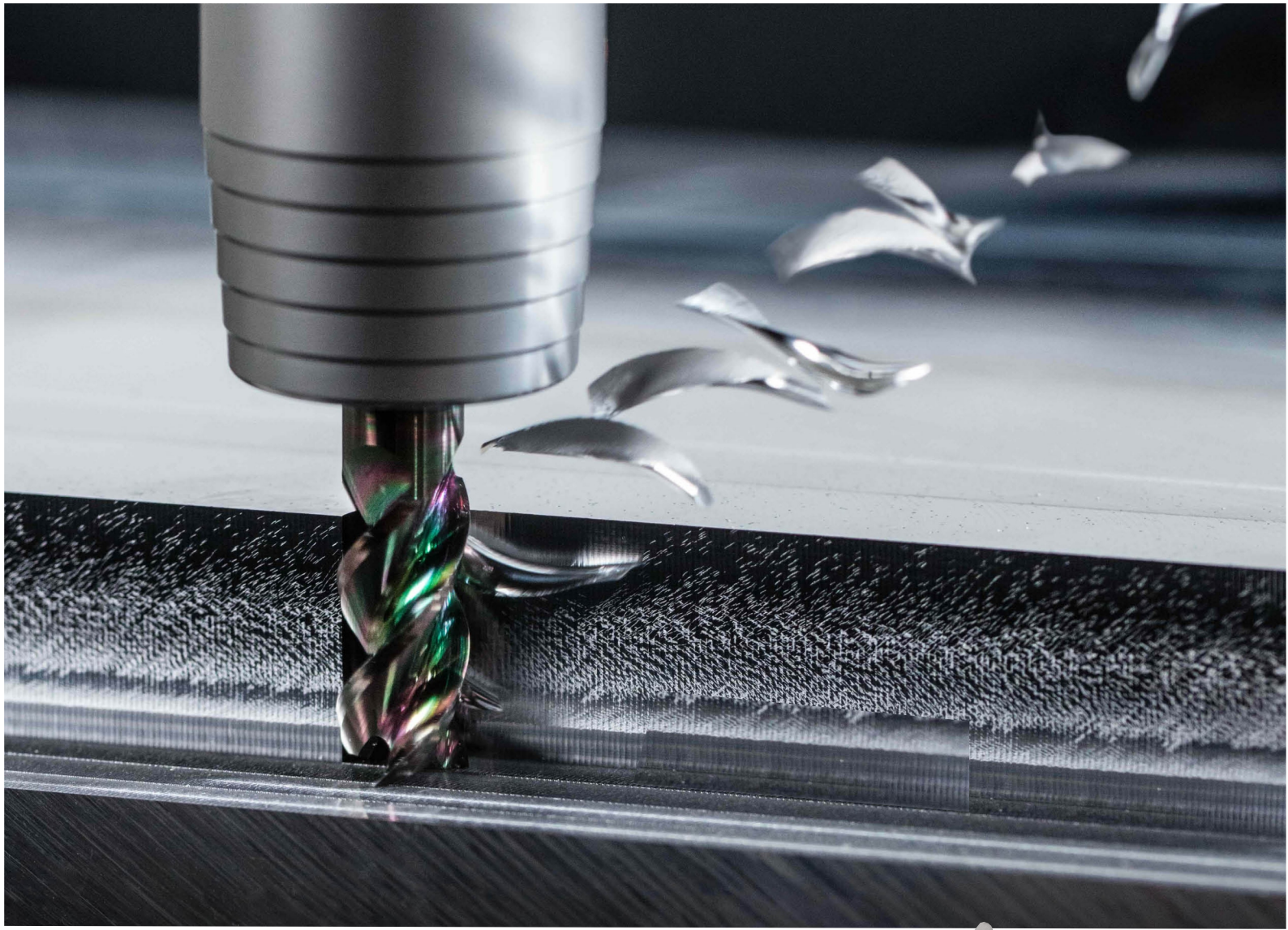




MULTI AXIS CNC





Honour

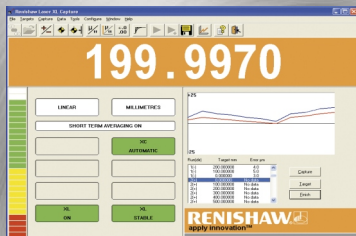
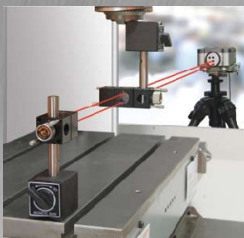
Indian Machine Tool Manufacturer's Association (IMTMA) honoured us as a "Most Achiever Entrepreneur-2014" at 5th Machine Tool Industry Summit at Goa during 1-4 May 2014



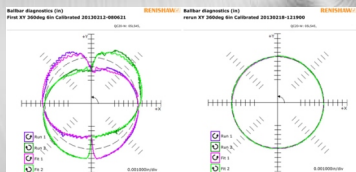
Quality Assurance

by **RENISHAW**
apply innovation™

Laser Calibration



Ball Bar Testing



Our Core Technology

Mitsubishi-M70V/M80



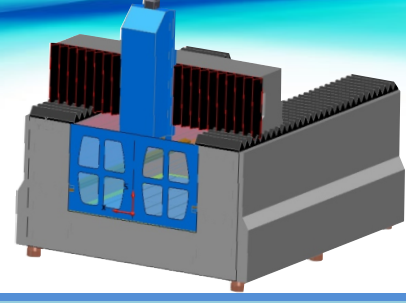
Double Column-Bridge Type heavy duty Rigid structure

Associate Partner





| | High Precision Engraving | | | Hybrid CNC Milling | |
|-------------------------------|--------------------------|----------------|----------------|-----------------------------------|----------------|
| | KD4040 | KD5040 | KD6040 | KD6040 | KD8060 |
| Travel Size | | | | | |
| X | 400 | 500 | 600 | 600 | 800 |
| Y | 400 | 400 | 400 | 400 | 600 |
| Z | 180 | 200 | 200 | 350 | 350 |
| Table Size | 500 x 420 | 600 x 420 | 700 x 420 | 700 x 420 | 900 x 550 |
| Gap Table to Spindle | 50-180=230mm | 50-200=250mm | 50-200=250mm | 100-350=450mm | 150-350=500mm |
| T slot | 1410 x 5Nos. | 1410 x 5Nos. | 1410 x 5Nos. | 1612 x 5Nos | 1612 x 5Nos |
| Load on Table (Kgs) | 200 | 250 | 250 | 350 | 350 |
| M/c structure | Cast iron | Cast iron | Cast iron | Cast iron | Cast iron |
| Spindle Power | 3.0Kw HF* | 3.0Kw HF* | 3.0Kw HF* | 5.5Kw HF* | 7.5Kw HF* |
| Spindle Taper | ER-25 | ER-25 | ER-25 | BT30 | BT-40 |
| Spindle Speed | 24000 Rpm | 24000 Rpm | 24000 Rpm | 18000 Rpm | 12000 Rpm |
| Spindle Torque Nm | 2.4Nm@3000 | 2.4Nm@3000 | 2.4Nm@3000 | 7.1Nm@2250 | 10.4Nm@2250 |
| Spindle Cooling | Water | Water | Water | Water | Water |
| Max Tool Cutting | 12.0mm | 12.0mm | 12.0mm | 20.0mm | 25.0mm |
| LM Guideways | 25.00mm THK | 25.00mm THK | 25.00mm THK | 35.00mm THK | 35.00mm THK |
| Ballscrew | 25.0mm Hiwin | 25.0mm Hiwin | 25.0mm Hiwin | 32.0mm Hiwin | 32.0mm Hiwin |
| Ballscrew Support | Sungil | Sungil | Sungil | Sungil | Sungil |
| Controler | NC Studio | Delta-Taiwan | Delta-Taiwan | Mitsubishi M80 | Mitsubishi M80 |
| Servo Motor | Delta-Taiwan | Delta-Taiwan | Delta-Taiwan | Mitsubishi | Mitsubishi |
| Servo Drive | Delta-Taiwan | Delta-Taiwan | Delta-Taiwan | Mitsubishi | Mitsubishi |
| Handwheel | NC Studio | Delta-Taiwan | Delta-Taiwan | Mitsubishi | Mitsubishi |
| Rapid Feed rate | 30,000mm/min | 30,000mm/min | 30,000mm/min | 20,000mm/min | 20,000mm/min |
| Cutting Feedrate | 10,000mm/min | 10,000mm/min | 10,000mm/min | 10,000mm/min | 10,000mm/min |
| Accurecy | 0.01/300mm | 0.01/300mm | 0.01/300mm | 0.008/300mm | 0.008/300mm |
| Repetability | 0.01/300mm | 0.01/300mm | 0.01/300mm | 0.005/300mm | 0.005/300mm |
| M/c Dimension | 1600x1500x1800 | 1800x1800x2100 | 1800x1800x2100 | 2200x2100x2400 | 2400x2200x2400 |
| M/c Wieght | 1000 Kgs | 1200 Kgs | 1250 Kgs | 3500 Kgs | 3800 Kgs |
| Standres Accessories | | | | | |
| Bellow Coupling | KTR Germany | KTR Germany | KTR Germany | R+H Germany | R+H Germany |
| Auto Lubrication | Dropco | Dropco | Dropco | Dropco | Dropco |
| Spindle Cooling Pump | Rajamane | Rajamane | Rajamane | Rajamane | Rajamane |
| Coolant Pump | Rajamane | Rajamane | Rajamane | Rajamane | Rajamane |
| Tower Light | R/Y/G | R/Y/G | R/Y/G | R/Y/G | R/Y/G |
| Work Light | LED-48watts | LED-48watts | LED-48watts | LED-48watts | LED-48watts |
| Anti-Vibration Pad | Dynamech | Dynamech | Dynamech | Dynamech | Dynamech |
| coolant tank | 150 liters | 200 liters | 200 liters | 250 liters | 250 liters |
| Isolati on Transformer | 2.0Kva | 2.0Kva | 2.0Kva | 5.0Kva | 5.0Kva |
| PH/Power Consumption | 1PH/7.5KVA | 1PH/7.5KVA | 1PH/7.5KVA | 3PH/15KVA | 3PH/15KVA |
| Optional Accessories | | | | | |
| Panel AC | | | | | |
| Spindle Chiller | | | | | |
| Jet Coolant | | | | | |
| Coolant Gun | | | | | |
| Upgra de Controller | | | | | |
| Upgra de Spindle | | | | | |
| Wooden Packing | | | | | |
| | | | | * HF=High Frequency Spindle Motor | |



| | CNC Vertical Milling (VMC) | | | Customized CNC Milling (Dual Y axis) | | | Double Spindle |
|------------------------------|----------------------------|-----------------|----------------|--------------------------------------|----------------------|----------------------|------------------------|
| | KD6050 | KD7050 | KD8060 | KD1012 | KD1215 | KD1525 | DS-8040 |
| Travel Size | | | | | | | |
| X | 600 | 700 | 800 | 1000 | 1200 | 1500 | X1=250mm X2=250mm |
| Y | 500 | 500 | 600 | 1200 | 1500 | 2500 | Y=400mm |
| Z | 400 | 450 | 500 | 400 | 450 | 500 | Z1=300mm Z2=300mm |
| Table Size | 700 x 520 x 80 | 800 x 520 x 80 | 900 x 550 x 80 | 1200 x 1400 | 1400 x 1600 | 1600 x 2400 | 900 x 400 |
| Gap Table to Spindle | 150-400=550mm | 100-450=550mm | 100-500=600mm | 100-400=500mm | 100-450=550mm | 100-500=600mm | 250-300=550mm |
| T slot | 1816 x 5Nos | 1816 x 5Nos | 1816 x 5Nos | 1816 x 5Nos | 1816 x 5Nos | 1816 x 5Nos | 1816 x 5Nos |
| Load on Table (Kgs) | 400 | 450 | 550 | 1500Kgs | 1500Kgs | 2000Kgs | 500Kgs |
| M/c structure | Cast iron | Cast iron | Cast iron | Fabricated+Cast iron | Fabricated+Cast iron | Fabricated+Cast iron | Cast Iron |
| Spindle Power | 6.25Kw/8.25Hp# | 6.25 Kw/8.25Hp# | 6.25Kw/8.25Hp# | 6.25 Kw/8.25Hp# | 6.25 Kw/8.25Hp# | 6.25 Kw/8.25Hp# | SP1=5.5Kw SP2=5.5Kw |
| Spindle Taper | BT-40 | BT-40 | BT-40 | BT-40 | BT-40 | BT-40 | BT-30 |
| Spindle Speed | 8000 Rpm | 8000 Rpm | 8000 Rpm | 8000 Rpm | 8000 Rpm | 8000 Rpm | 18000 Rpm |
| Spindle Torque Nm | 59 Nm@1000 | 59 Nm@1000 | 59 Nm@1000 | 59 Nm@1000 | 59 Nm@1000 | 59 Nm@1000 | 7.1Nm@3000 |
| Spindle Cooling | Water | Water | Water | Water | Water | Water | Water |
| Max Tool Cutting | 50.0mm | 50.0mm | 50.0mm | 50.0mm | 50.0mm | 50.0mm | 16.0mm |
| LM Guideways | 45.00mm THK | 45.00mm THK | 45.00mm THK | 35.00mm THK | 35.00mm THK | 35.00mm THK | 35.00mm THK |
| Ballscrew | 40.0mm Hiwin | 40.0mm Hiwin | 40.0mm Hiwin | 32.0mm Hiwin | 32.0mm Hiwin | 40.0mm Hiwin | 32.0mm Hiwin |
| Ballscrew Support | Sungil | Sungil | Sungil | Sungil | Sungil | Sungil | Sungil |
| Controller | Mitsubishi M80 | Mitsubishi M80 | Mitsubishi M80 | Mitsubishi M80 | Mitsubishi M80 | Mitsubishi M80 | Mitsubishi M80 |
| Servo Motor | Mitsubishi | Mitsubishi | Mitsubishi | Mitsubishi | Mitsubishi | Mitsubishi | Mitsubishi |
| Servo Drive | Mitsubishi | Mitsubishi | Mitsubishi | Mitsubishi | Mitsubishi | Mitsubishi | Mitsubishi |
| Handwheel | Mitsubishi | Mitsubishi | Mitsubishi | Mitsubishi | Mitsubishi | Mitsubishi | Mitsubishi |
| Rapid Feed rate | 2,000mm/min | 20,000mm/min | 2,000mm/min | 20,000mm/min | 2,000mm/min | 20,000mm/min | 20,000mm/min |
| Cutting Feedrate | 10,000mm/min | 10,000mm/min | 10,000mm/min | 10,000mm/min | 10,000mm/min | 10,000mm/min | 10,000mm/min |
| Accuracy | 0.008/300mm | 0.008/300mm | 0.05mm | 0.05mm | 0.05mm | 0.05mm | 0.008mm |
| Repeatability | 0.005/300mm | 0.005/300mm | 0.05mm | 0.05mm | 0.05mm | 0.05mm | 0.005mm |
| M/c Dimension | 2200x2100x2400 | 2400x2400x2400 | 1500x2400x2700 | 1500x2100x2400 | 1800x2400x2400 | 1500x3200x2700 | 2100x2400x2100 |
| M/c Weight | 4500 Kgs | 4800 Kgs | 5000 Kgs | 3500 Kgs | 3800 Kgs | 4000 Kgs | 3500 Kgs |
| Standres Accessories | | | | | | | |
| Bellow Coupling | R+H Germany | R+H Germany | R+H Germany | R+H Germany | R+H Germany | R+H Germany | R+H Germany |
| Auto Lubrication | Dropco | Dropco | Dropco | Dropco | Dropco | Dropco | Dropco |
| Spindle Cooling Pump | Rajamane | Rajamane | Rajamane | Rajamane | Rajamane | Rajamane | Rajamane |
| Coolant Pump | Rajamane | Rajamane | Rajamane | Rajamane | Rajamane | Rajamane | Rajamane |
| Tower Light | R/Y/G | R/Y/G | R/Y/G | R/Y/G | R/Y/G | R/Y/G | R/Y/G |
| Work Light | LED-48watts | LED-48watts | LED-48watts | LED-48watts | LED-48watts | LED-48watts | LED-48watts |
| Anti-Vibration Pad | Dynamech | Dynamech | Dynamech | Dynamech | Dynamech | Dynamech | Dynamech |
| coolant tank | 280 liters | 300 liters | 300 liters | 280 liters | 300 liters | 300 liters | 300 liters |
| Isolation Transformer | 5.0Kva | 5.0Kva | 5.0Kva | 5.0Kva | 5.0Kva | 5.0Kva | 5.0Kva |
| PH/Power Consumption | 3PH/25KVA | 3PH/25KVA | 3PH/25KVA | 3PH/25KVA | 3PH/25KVA | 3PH/25KVA | 3PH/25KVA |
| Optional Accessories | | | | | | | Tool height probe |
| Panel AC | | | | | | | |
| Spindle Chiller | | | | | | | |
| Jet Coolant | | | | | | | |
| Coolant Gun | | | | | | | |
| Upgrade Controller | | | | | | | |
| Upgrade Spindle | | | | | | | |
| Wooden Packing | | | | | | | |
| | # AC Spindle Motor | | | # AC Spindle Motor | | | |



Plot No.-G1-276 RIICO Ind.Area,Khushkhera(Bhiwadi)
 Dist.-Alwar -Rajasthan Pin -301707-INDIA
 Landline:91-1493-298143,M: 9717863403,9810455354,9717523803
 Email:-raj.kush@hotmail.com,info@multiaxiscnc.in
 Website:-www.multiaxiscnc.in
 GSTIN-08ALPPK6913Q1Z8 ,TIN-08704205554 ,PAN-ALPPK6913Q

Manufacturers of:- VMC's ,CNC Engraving , Table top Engraving ,Double Spindle Mocket Milling ,FutureMill (Twin CNC milling)

Unit-2 :- Multi Axis CNC Robotics, Opp. Maruti Kunj,Sohna Road,Bhondsi-Gurgaon-122102-Haryana