

COUTH[®]

INDUSTRIAL MARKING SYSTEMS

**THE SPECIALIST IN
INDUSTRIAL MARKING**

01

ABOUT COUTH



HISTORY

2020

- + Transformation of Shanghai's Rep. Office into COUTH CHINA.
 - + Establishment of COUTH Industrial Marking Systems DEUTSCHLAND GmbH.
-

2019

- + Launch of COUTHlink.
 - + Constitution of COUTH MEXICO S.A. de C.V.
-

2018

- + Launch of new laser technology (fiber).
 - + Launch of new generation of dot peen, scribe and COUTHsmartbox machines.
 - + Sales office in Shanghai (China).
-

2017

- + Development of the new generation of dot peen, scribe machines and the COUTHsmartbox electronic control unit.
-

2016

- + Change of company name to COUTH INDUSTRIAL MARKING SYSTEMS, S.L.U.
- + WS1800 Industries acquires COUTH → New strategic plan.

2013

- + Move to the current facilities in Hernani (Gipuzkoa).
-

2004

- + Launch of new electronic control unit with new features.
-

1996

- + National machine tool design award.
-

1995

- + Super Fast version launched.
-

1994

- + International patent on the dot-marking domain.
-

1992

- + Launch of the technology of microdot marking with electronic control.
-

1963

- + Incorporation of Constructora de Útiles y Herramientas, S.A.
-

1954

- + Start of the impact technology marking activity in San Sebastian (Spain).

COUTH®

MISSION

COUTH develops activities aimed at providing high quality solutions and products to customers and users with industrial marking needs.

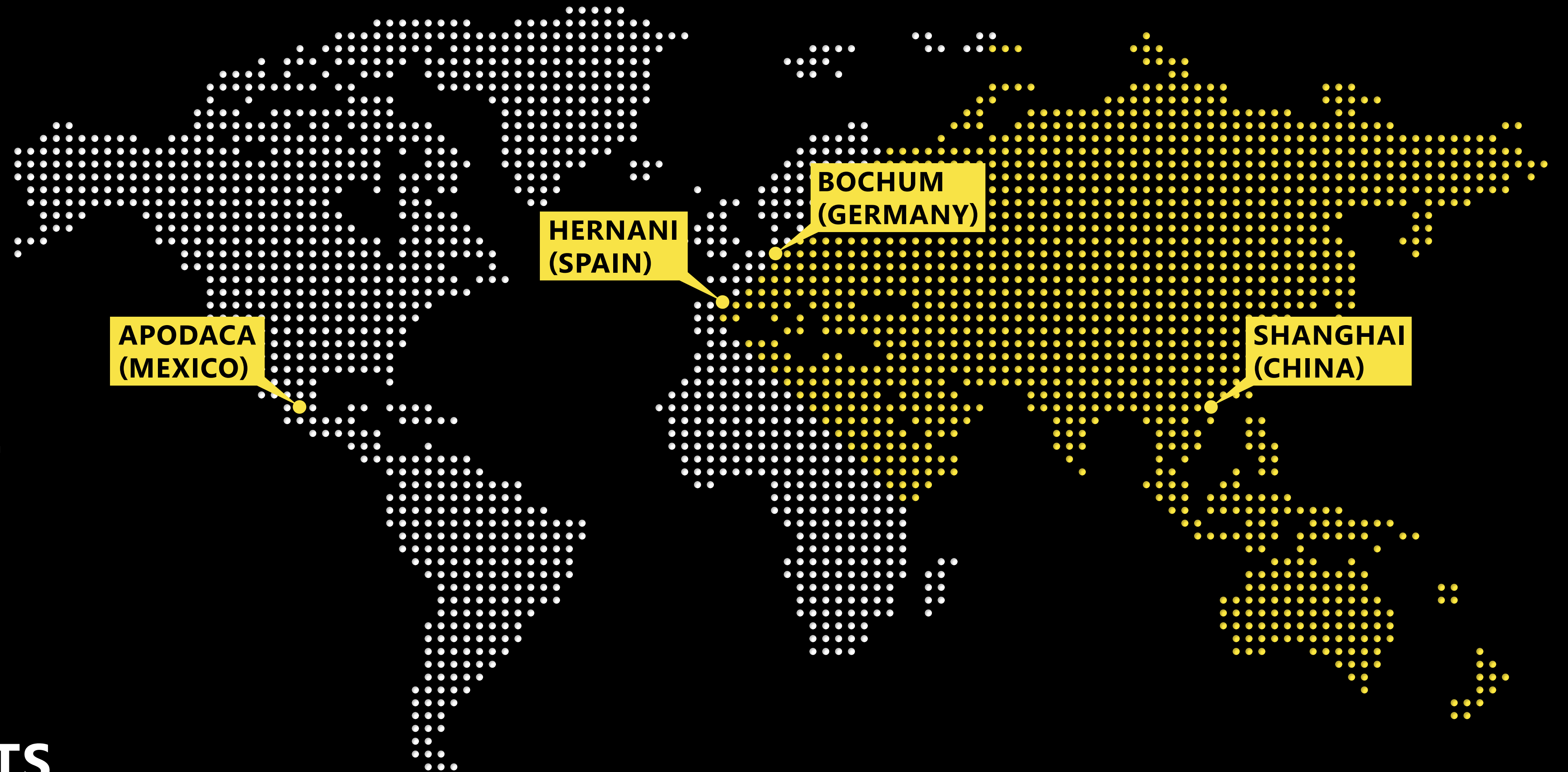


Our management is based on:

- ⊕ The knowledge of end-users and customers.
- ⊕ The strength of our brand.
- ⊕ Research, development and innovation.
- ⊕ Development of people skills.
- ⊕ The excellence of our processes.
- ⊕ An excellent supply chain.

All of this will allow us to achieve profitable growth and contribute to the satisfaction of our customers, shareholders and people who are part of the Project, in a context of respect for the environment and social responsibility.

INTERNATIONAL PRESENCE



WORLDWIDE NETWORK

66 COUNTRIES

5 CONTINENTS

+25.000

MACHINES IN OPERATION

02

SECTORS

COUTH®

SECTORS

▶ AUTOMOTIVE

+ Automotive marking (BIW)



+ Technical plastic parts



+ Marking of exhaust parts



+ Vehicle identification number marking (VIN marking)



+ Transmission system marking



+ Engine block and gearbox marking



COUTH®

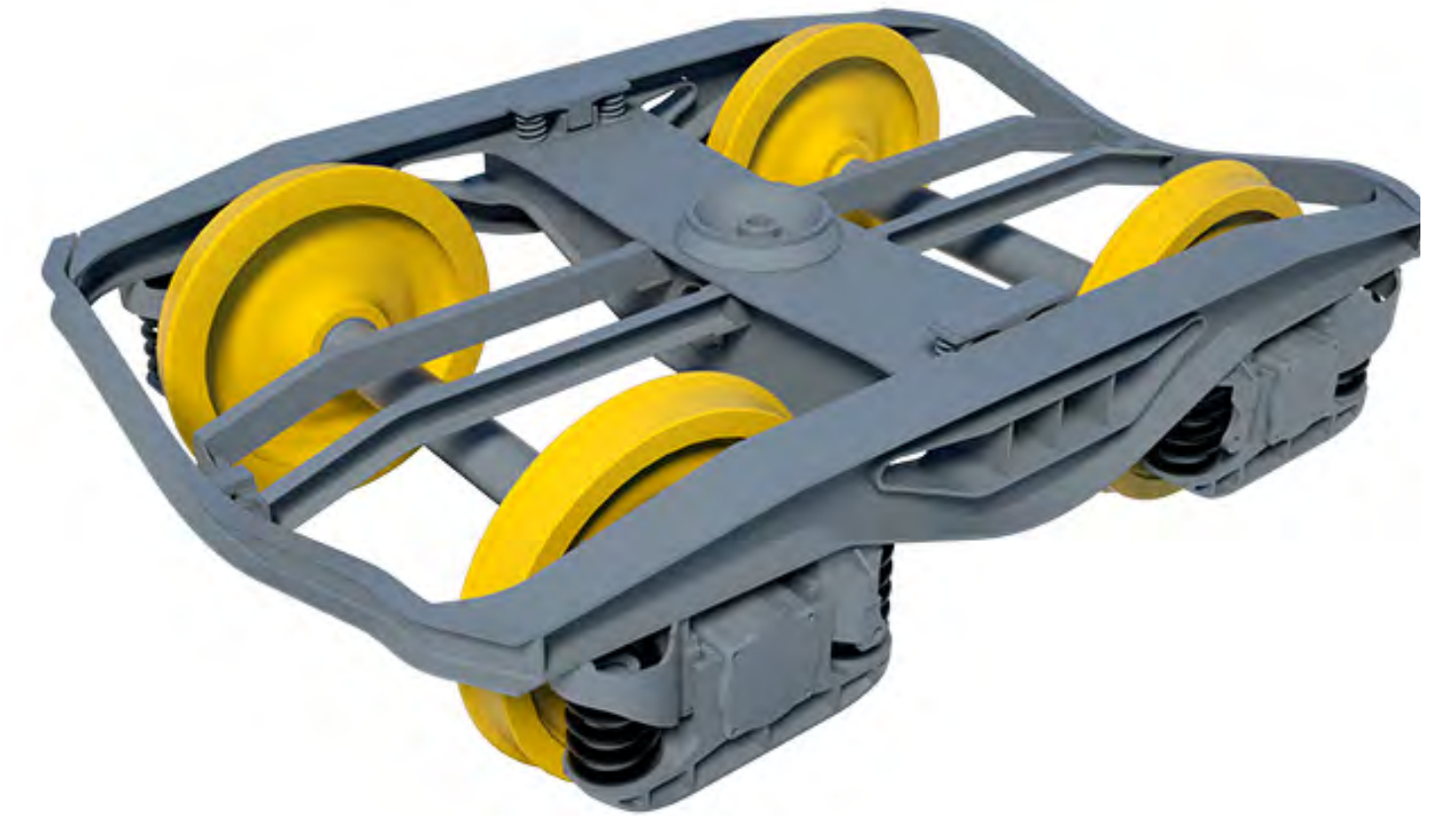
SECTORS

▶ RAILWAY

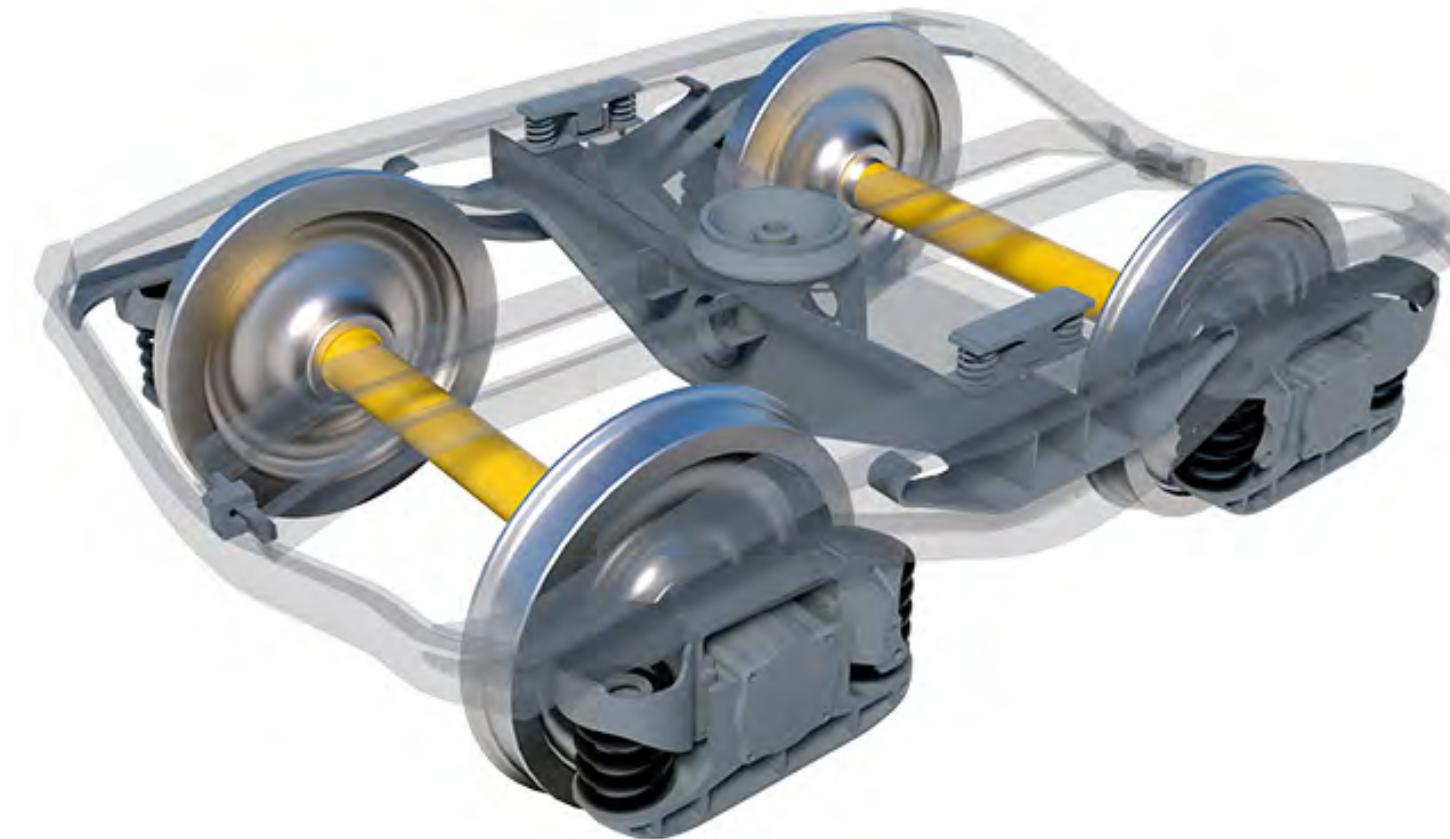
+ Bogie frame marking



+ Marking of train wheels



+ Marking of train wheel axles



COUTH®

SECTORS

▶ **STEEL
INDUSTRY**

+ Marking of rails



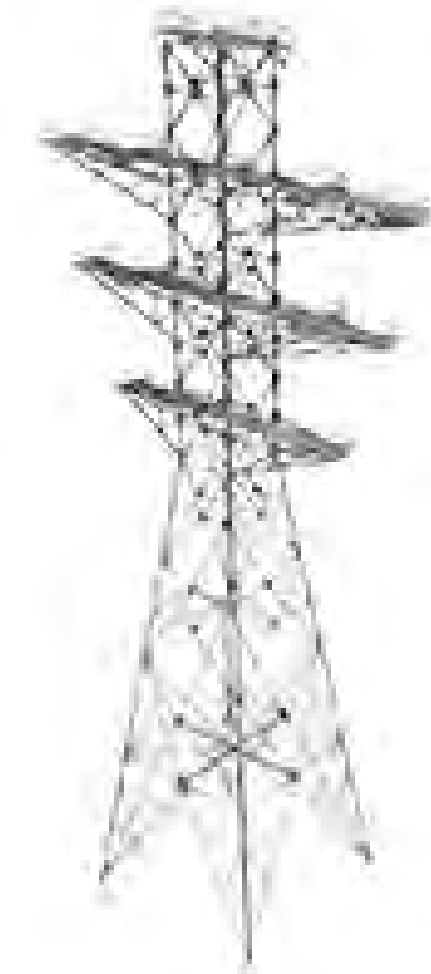
+ Hot industrial marking



+ Marking of metal structures



+ Industrial marking of steel pylons



COUTH®

SECTORS

▶ **OIL & GAS**

+ Gas cylinders marking



+ Valves



+ Piping



+ Flanges



+ Marking solutions for different applications

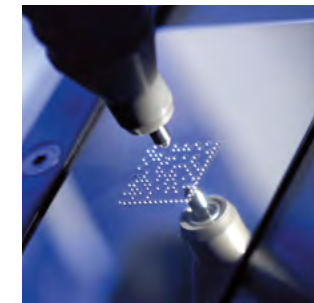


COUTH® manufactures a wide range of marking machines for the traceability of parts in cutting-edge industrial sectors. Our extensive experience in industrial marking means we can offer our customers the most innovative microdot and scribe marking technology.

03

PORTFOLIO

PORTFOLIO



TECHNOLOGY

- + Dot Peen Marking
- + Scribe Marking
- + Laser Marking



ASSEMBLY TYPES

- + Integrable Marking machines
- + Portable Marking machines
- + Benchttop Marking machines
- + Hybrid Marking machines



MARKING TYPES

- + Superfast
- + Standard
- + Deep marking
- + Servo



CONTROL UNITS

- + CONTROL UNIT COUTHsmartbox
- + CONTROL UNIT SERVO T2S

COUTH®

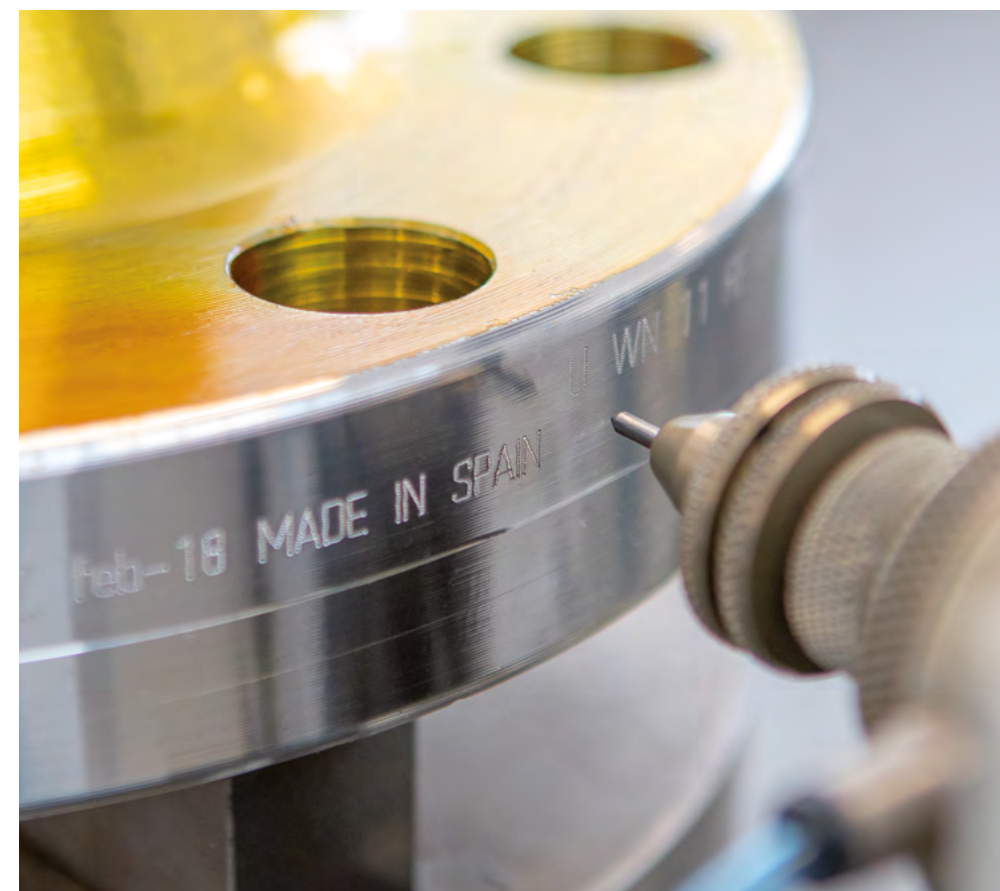
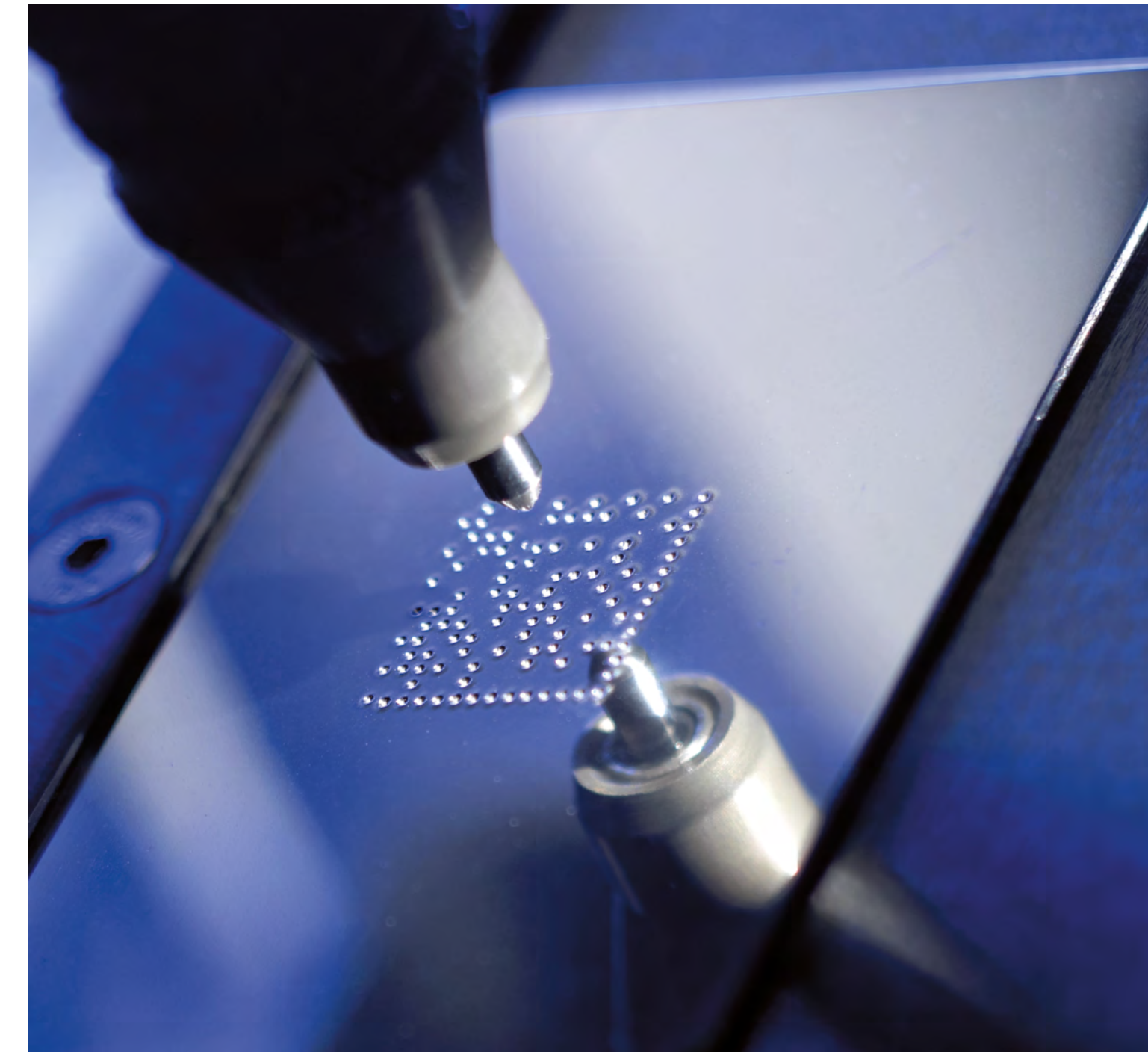
TECHNOLOGY

▶ DOT PEEN MARKING

Speed, marking depth and reliability.

The technology that incorporates the microdot marking range makes them the fastest machines in the market. **Functionality, productivity and optimum marking quality.**

Add the COUTH® features to these characteristics, such as toughness and reliability, the result of over half a century of experience in many sectors and applications.



We are quite aware at COUTH® that marking machines are a key element in the production chain. This is why we add an exceptional speedy and customer proximity service to the quality and robustness of our range.

COUTH®

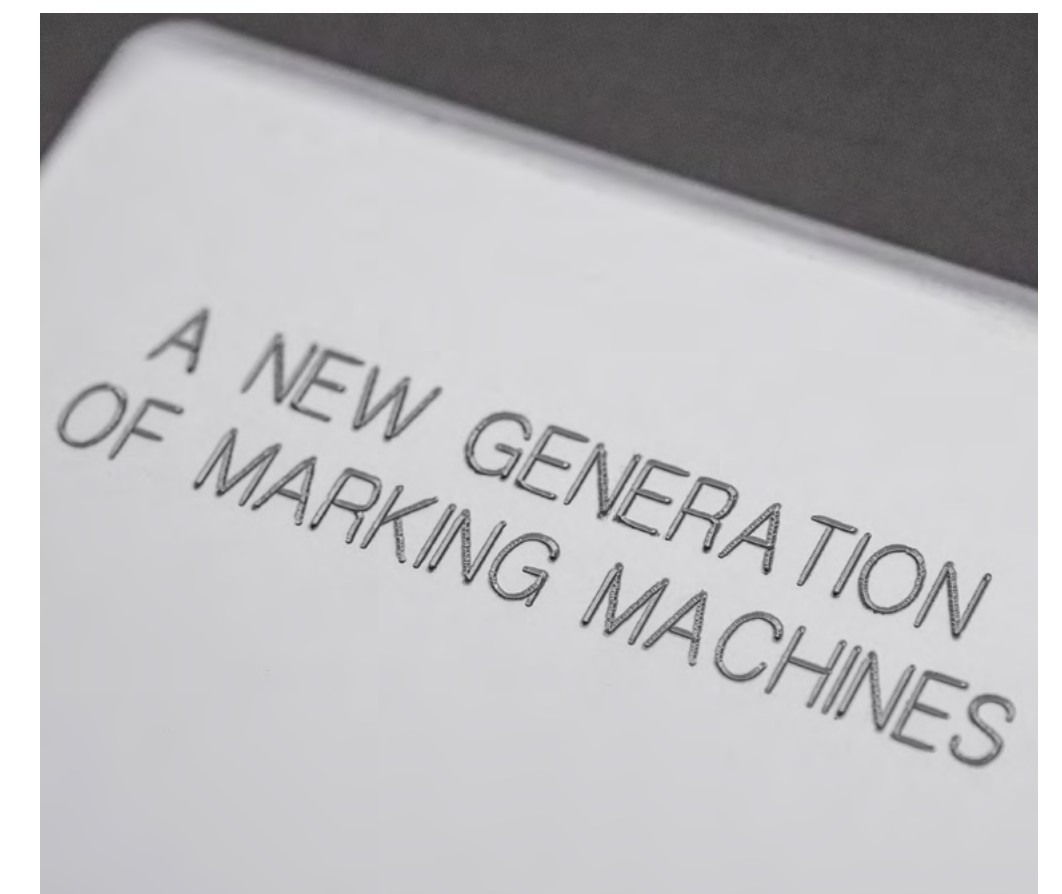
TECHNOLOGY

► SCRIBE MARKING



When noise free marking is a need, scribe marking is the ideal technology. Add a compact, robust and reliable design to this feature, and we have range that provides fine, elegant, sharp and deep marking.

Optimum marker-electronic control / PLC communications makes them easy to integrate into our customers computer systems. All of course, without compromising the ease in handling, versatility and excellence in service that characterises COUTH® .



COUTH®

TECHNOLOGY

▶ LASER MARKING

Fiber laser marking system, designed and manufactured with high-quality components with the COUTH® guarantee, provides a power of 20W, 30W and 50W. Designed to be easily integrable in any industrial environment for the laser marking in all kind of metals, ceramics materials and a wide range of plastics.



Provides a high marking speed. The power output stability makes possible a high and long term performance.



COUTH®

INTEGRABLE MARKING MACHINES



PORTABLE MARKING MACHINES



BENCHTOP MARKING MACHINES



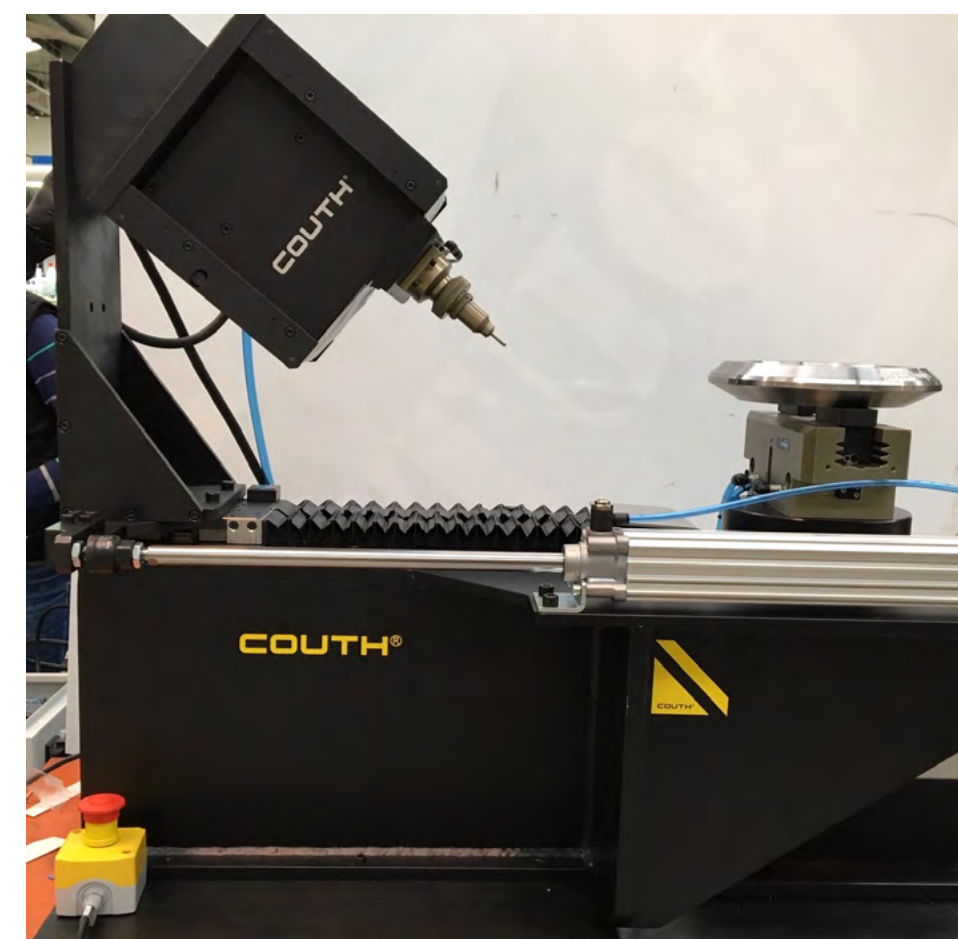
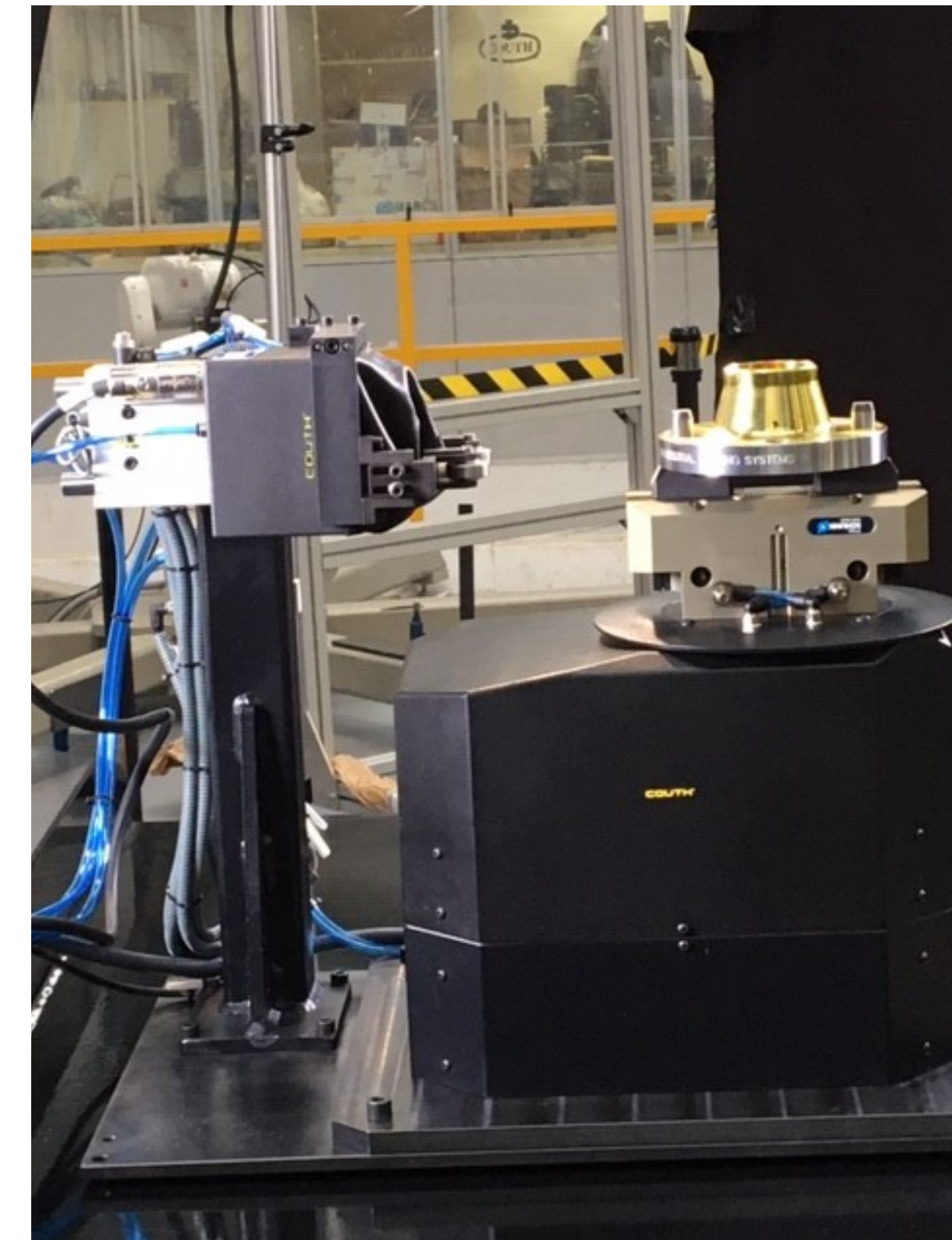
HYBRID MARKING MACHINES



**ASSEMBLY
TYPES**

COUTH®

CUSTOMIZED SOLUTIONS



For any type of need with automatons, robots, artificial vision systems, ..., interconnected with all kinds of main installations.

COUTH®

COUTHlink

Software developed by COUTH® to facilitate the communication between the autonomous control system and the control unit of the couth marking machine through the use of libraries that use different programming platforms for the autonomous control system.

- + Facilitates interaction with the control unit of the couth marking machine and different brands of plc's on the market, (SIEMENS, ALLEN BRADLEY, OMRON, ...).
- + Developed in the platform language. working in the same language as your PLC.
- + Own functions on the autonomous control system platform with the COUTH® protocol.
- + Includes a library package for the different automation programming platforms.
- + Substantial reduction on programming hours. **From 30 hours to 10 minutes.**

START-UP IN 10 MIN.

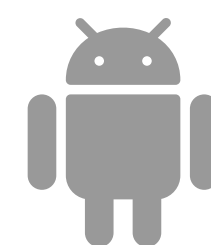
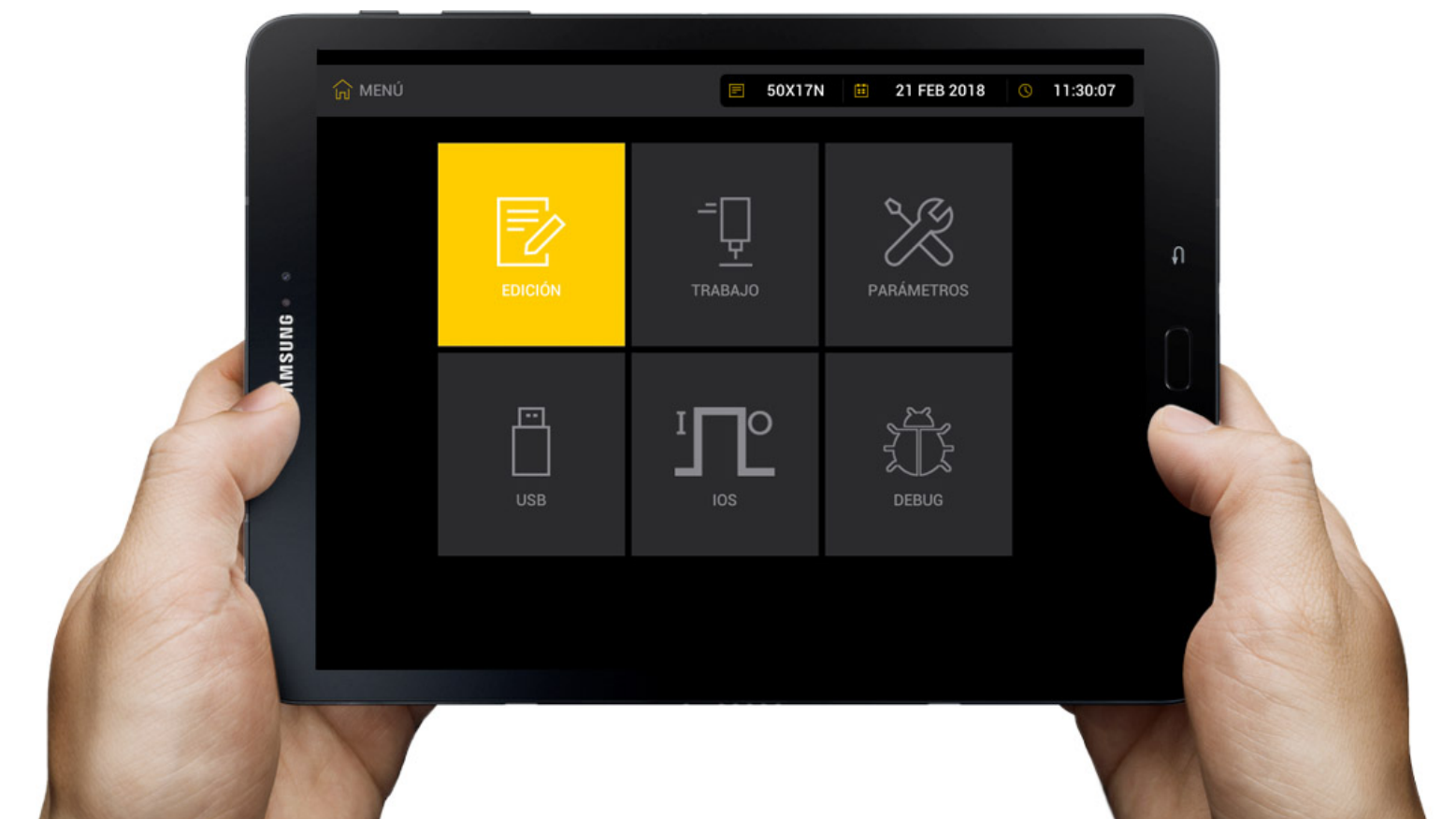


COUTH®

COUTHRemoteHMI

Android application for you to access the COUTHsmartbox control unit to control the COUTH® dot-peen and scribe marking units from your tablet.

- + With it, you can edit files, modify parameters and control marking from your tablet.
- + Use the exact same functions as with the HMI COUTH Touchscreen and COUTH Keypad through your Android tablet.



at [AppStore](#)

04

CUSTOMERS

COUTH®

**MAJOR
INDUSTRIAL
GROUPS
RELY ON
COUTH**



Mercedes-Benz



Alcatel-Lucent



YAMAHA



SAUB



**COUTH PERFORMANCE,
TOP PERFORMANCE.**

COUTH[®]

INDUSTRIAL MARKING SYSTEMS

www.couth.com

COUTH[®]
Zikuñaga 48, Hernani
Gipuzkoa · Spain
T.: +34 943 556 412
couth@couth.com