



GENTECH[®]
S C I E N T I F I C

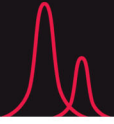
A PURITY SCIENTIFIC PORTFOLIO COMPANY

PRODUCT CATALOG

PHONE: 585.492.1068

WEBSITE: GENTECHSCIENTIFIC.COM

EMAIL: SALES@GENTECHSCIENTIFIC.COM



About Us

A pioneer in the refurbished instruments industry, GenTech has built a reputation as a trusted partner for laboratories across the globe. Over the last 26 + years, GenTech has provided scientists, universities, and corporations with quality, warranted analytical instrumentation, as well as installation, training, maintenance, and repair services to help further their research.

Acquired by Lakelet Capital in 2020, GenTech is now sister company to Conquer Scientific which Lakelet acquired in 2021. Consolidated under Purity Scientific, GenTech and Conquer are now headed by one executive management team and offer a combined inventory and other shared resources to better serve our customers.



GENTECH
SCIENTIFIC

MISSION

GenTech Scientific works to build trust, instill confidence, and alleviate the burden of laboratory logistics by offering analytical equipment across a wide spectrum of brands, mission-critical insight, and a robust support program.

VISION

To be unequivocally considered as the industry experts by reshaping the OEM analytical instrumentation market through experience, expertise, and empathy.

VALUES

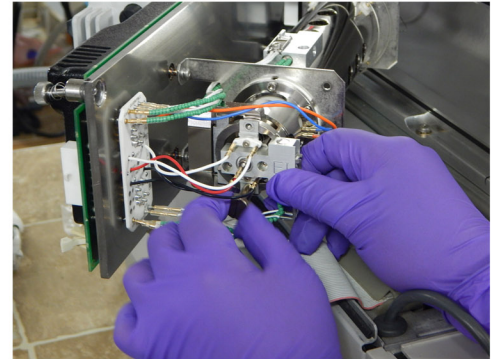
We understand how much is on the line with every research endeavor and value the trust placed in our team's knowledge and service. Our pioneering spirit drives us to explore new and innovative ways to better the personal and professional passions of our employees and greater scientific community.

Our Refurbishment Process



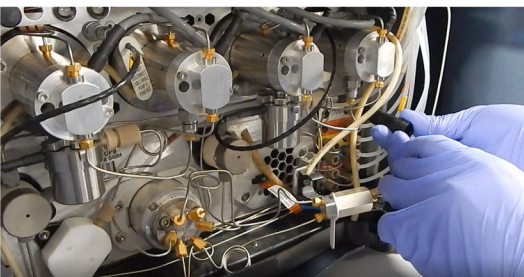
INSPECTION – GenTech’s staff of certified engineers inspect and evaluate all components of every piece of instrumentation we sell to ensure peak performance.

CONFIGURATION – After inspection, the GenTech team begins the process of custom configuration for each individual order with unique add-ons and accessories to create a custom system every time.



REFURBISHMENT – After evaluation and system configuration, our technicians begin the rigorous refurbishment process to restore the equipment. We verify all firmware and software applications and perform full product calibration and data verification.

PACKING & SHIPPING – Our shipping department inspects, packages and ships your instruments to ensure your investment will arrive safely to your lab.



INSTALLATION – GenTech offers professional lab set-up and familiarization training. This final step ensures that your instrument performs as well in your facility as it did in ours. Not only does our professional installation give you peace of mind in your investment, it protects your warranty coverage. We also offer hands-on training at your facility – ask your rep for more information.

Gas Chromatograph & GC/MS



Agilent 5977 MSD WITH 7890 GC AND 7693 AUTOSAMPLER



Agilent 8860 GC System



Agilent 5973 MSD WITH 6890 GC AND 7683 AUTOSAMPLER

GC & GC/MS ACCESSORIES



Agilent 7697A HEADSPACE SAMPLER



Agilent G1888 HEADSPACE SAMPLER



HP 7694 HEADSPACE SAMPLER

NEW GC & GC/MS Samplers



Reduce Bench Space with Versatile 2 in 1 Systems

NEW LIQUID & HEADSPACE SAMPLER



Liquid (HT3000A)

- 121 position (2ml) liquid vial rack
- Syringe volume: 0.5, 1, 5, 10, 25, 50 and 100 μ l
- Sample volume: as low as step of 0.1 μ l
- Air volume: as low as step of 0.1 μ l
- 10 μ l liquid syringe

Headspace (HT2000H)

- 42 Position (20 μ l) headspace vial rack
- 6 Oven Positions
- 2.5 heated headspace syringe
- Oven temperature range: 40-170 degrees celsius
- Orbital shaking capability

SPME (Option)

- SPME Fiber holder
- SPME Polydimethylsiloxane (PDMS) fiber

Two Applications in One System (HT2800T)

Performs headspace in one injector and liquid in the second injector



NEW LIQUID SAMPLER

- 209 (121 & 88 racks) for 2ml vials
- Syringe volume: 10 μ l
- Sample volume: as low as step of 0.1 μ l
- Air volume: as low as step of 0.1 μ l
- Filling speed: 1-100 μ l/sec
- Viscosity delay: 0-15s
- Bubble elimination: up to 15 pull up strokes

NEW HEADSPACE SAMPLER

- 42 Positions (20ml) headspace vial rack
- 6 Oven Positions
- 2.5ml heated headspace syringe
- Oven temperature range: 10-170 degrees celsius
- Orbital shaking capability

High Performance Liquid Chromatograph



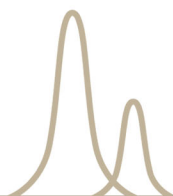
Waters ACQUITY
UPLC SYSTEMS



Thermo EASY-NLC SERIES



Agilent 1100, 1200,
1260, 1290 HPLC/UPLC



THERMO | AGILENT | WATERS & MORE



Shimadzu 20A & 30A HPLC

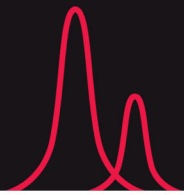


Dionex ULTIMATE 3000



Waters 2695 SYSTEMS

HPLC Modules



WE CARRY A WIDE VARIETY OF MODELS



Agilent | Waters | Dionex | Shimadzu

Autosamplers

- Thermostatted
- Preparative
- Well Plate
- PAL
- Multisampler

Pumps

- Quaternary
- Binary
- Isocratic
- Prep

Detectors

- Diode Array Detector (DAD)
- Variable Wavelength Detector (VWD)
- Fluorescence Detector (FLD)
- Refractive Index Detector (RID)
- Multiple Wavelength Detector (MWD)

Degassers

Fraction Collectors

Column Compartments

Liquid Chromatography / Mass Spectrometers



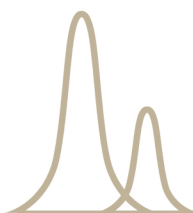
Shimadzu 8060
LC/MS/MS



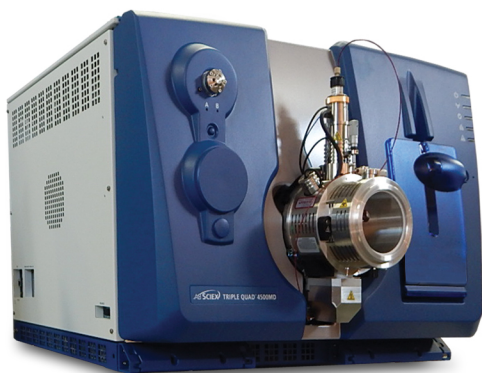
Agilent 6540
LC/MS/MS



Thermo LTQ XL
Orbitrap MS



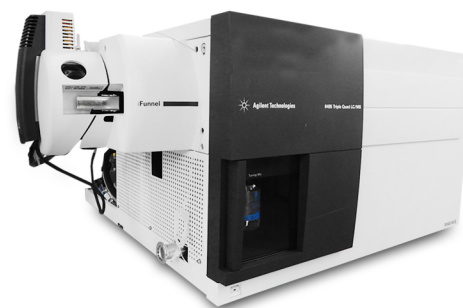
THERMO | AGILENT | WATERS & MORE



Sciex API 4500
LC/MS/MS



Waters Xevo
Acquity TQD



Agilent 6495
LC/MS/MS

Vacuum Pumps

Additional New, Used & Refurbished Pumps are Available!



Edwards E2M28
Vacuum Pump



Edwards E2M2
Mechanical Pump



Pfeiffer DUO 2.5
Vacuum Pump

EDWARDS | PFEIFFER | VARIAN | & MORE



Ulvac GHD-031
Vacuum Pump



Varian HS 602
Vacuum Pump



Edwards XDS Series
DryVacuum Pump

NEW LABTEK Generators

The **LABTEK N²35** produce high-purity nitrogen for laboratory applications such as Liquid Chromatography – Mass Spectrometry, Glove Boxes, and Evaporators.

FEATURES:

- Generate nitrogen on demand
- Designed for continuous use
- Dual-bed, PSA technology delivers up to 99.99% pure nitrogen (flow rate dependent)
- Exceptionally quiet
- Compact design fits smoothly under laboratory bench
- Touchscreen control displays status and maintenance alerts; remote monitoring and management capabilities



LABTEK's N² Tri-Gas is the only generator you'll need to provide gas requirements to the full suite of Sciex LCMS instruments

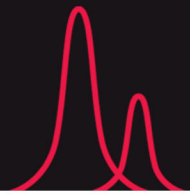
FEATURES:

- Provides 20 LPM of Curtain Gas (Nitrogen), 26 LPM of Source Gas (Zero Air), and 25 LPM of Exhaust Gas (Dry Air)
- Designed for continuous use
- Dual-bed, PSA technology delivers up to 99.99% pure nitrogen (flow rate dependent)
- Exceptionally quiet
- Compact design fits smoothly under laboratory bench
- Touchscreen control displays status and maintenance alerts; remote monitoring and management capabilities



Designed to meet the requirements of any of LC/MS Model

NEW NXT POWER UPS SYSTEMS



INTEGRITY MAX SERIES UPS LINE

Its sleek, forward-thinking, and eco-friendly design provides stable and uninterrupted power for your mission-critical application with industry-leading efficiency, durability, and performance.

BENEFITS & FEATURES

- Enjoy peace of mind knowing equipment is protected from problems due to common-mode voltage, power outages, spikes and transients, and more
- Stable output over a wide range of input voltage and frequencies
- (New) Online double conversion topology product line options range from 2 kVA to 10 kVA



INTEGRITY SINGLE-PHASE POWER CONDITIONER

Designed for use on those applications with dual-voltage requirements. For small or mid-range electronic systems.

BENEFITS & FEATURES:

- Let through voltage is less than 10 volts normal mode and less than 0.5 volts. Neutral-to-ground when tested to ANSI/IEEE C62.41, Category A&B.
- Product line options are from 2 kVA to 7 kVA.
- Provides clean power at 208 or 240 VAC input and 208/240/120 VAC output for loads up to 29 amps.

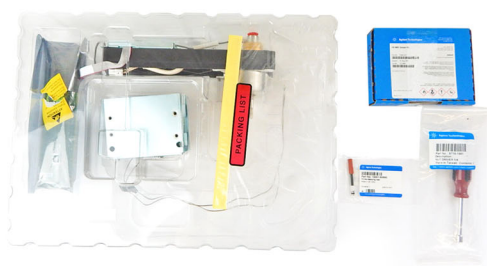


Tested Analytical Parts

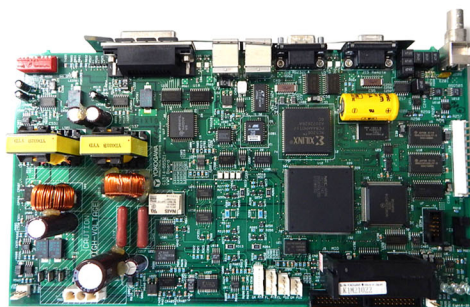
GenTech Puts New Life Into Old Instruments

Since 1996, GenTech has gained a wide range of hard to find & obsolete parts. GenTech's parts division provides tested parts with a **30 day warranty**.

DETECTOR KITS



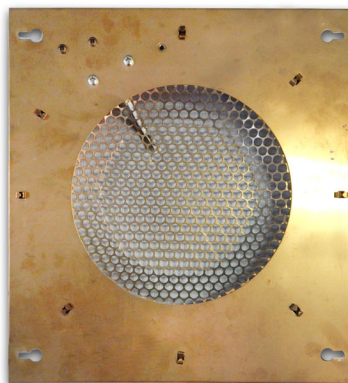
CIRCUIT BOARDS



TESTED PARTS



AGILENT | THERMO | WATERS | SCIEX | SHIMADZU & MORE





GENTECHTM
SCIENTIFIC

RENT OR BUY WITH CONFIDENCE

SCIENTIFIC INSTRUMENT RENTALS

Get up and running quickly on your next short-term project by coming to GenTech Scientific for your scientific instrument rentals! GenTech has a large, versatile inventory of analytical instruments to provide plenty of options and a fast rental turnaround. With affordable down payments and low monthly rental payments, you can preserve capital for other areas of your business instead of having it invested in a single piece of equipment.

BUYING

VS

RENTING

OWNERSHIP

Gain the future value by owning equipment. Keep the equipment as long as you want.

FREE LIFETIME SUPPORT

Receive remote support from GenTech Scientific.

WHY BUY NEW? WHEN YOU DON'T HAVE TO!

LESS INITIAL EXPENSE

Acquire equipment with minimal initial expenditures.

EASIER TO UPGRADE EQUIPMENT

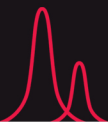
There's no burden of trying to sell an old instrument. You are able to upgrade your system after your lease expires.

TRY BEFORE YOU BUY!

Whether you buy or rent, you will still receive the same great service, support, installation and warranty.

Contact GenTech today for your laboratory needs.

BECKY@GENTECHSCIENTIFIC.COM



Instrument Installation & Training

LET GENTECH HELP GET YOUR LAB STARTED

CERTIFIED INSTALLATION

Our GenTech service engineers complete rigorous training to ensure your equipment installation meets the needs of your application method. With our Certified Install, your warranty is protected from any installation issues.

Installation Includes:

- Unpacking
- Laboratory set up
- Basic performance testing
- Initial familiarization training

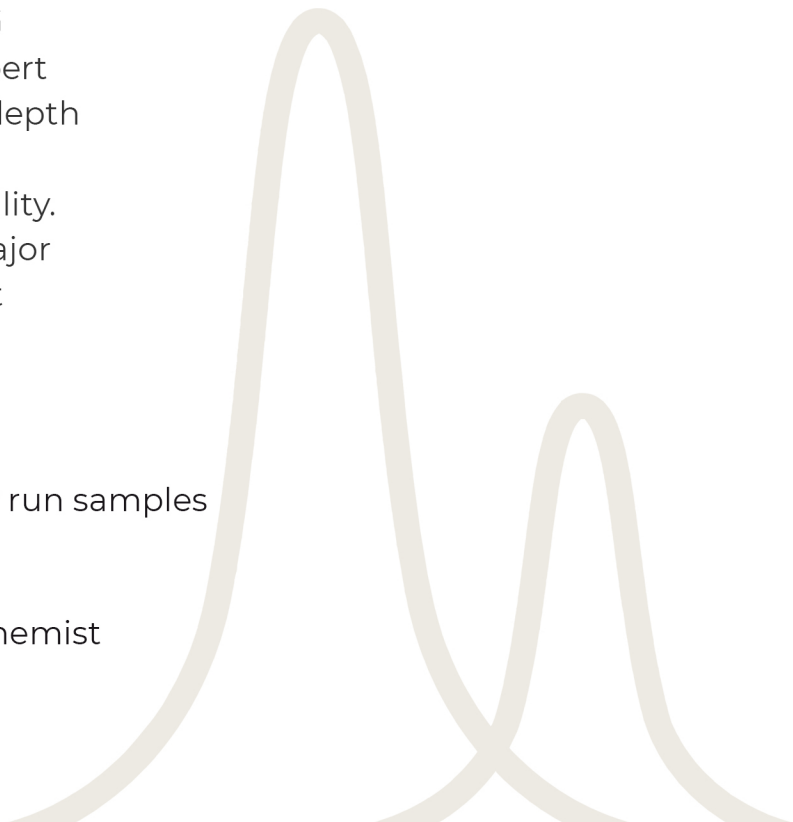


CUSTOMIZED INSTRUMENT TRAINING

GenTech Scientific is your best source for expert training! GenTech is equipped to provide in-depth training on applications related to the instrument, either at your site or our own facility. With expertise on instruments from most major manufacturers, let GenTech help your lab get started.

Familiarization Includes:

- Instrument operation and how to effectively run samples
- Troubleshooting and basic maintenance
- Testing theory of the instruments for your chemist
- Hands-on training at our location or yours
- Instrument application setup



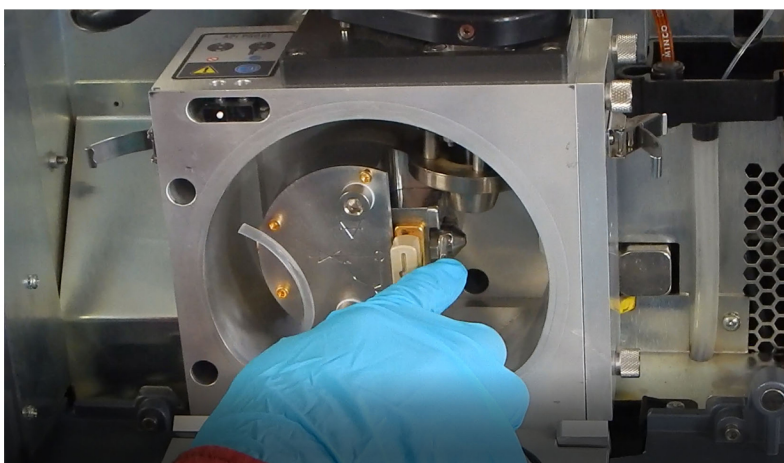
Instrument Repair & Service

SEND US YOUR EQUIPMENT FOR REPAIR

To **reduce your down time** and service costs, GenTech Scientific employs highly trained, expert technicians who deliver the most reliable, consistent, and competitively priced service in the industry. Our well-equipped and fully staffed repair shop in our Arcade, NY headquarters is available to perform expert repairs on most GC, GC/MS, LC and LC/MS systems and accessories. We offer reasonable service rates that are below manufacturers' standard rates.

SERVICES PROVIDED:

- In-House Service & Repair
- On-Site Service & Repair*
- Warranty Service & Repair
- Service Agreements*
- Preventative Maintenance*
- Warranty Extension
- Lab Relocation and Setup*
- OQ - Operational Qualification*
(GC, GC/MSD & HPLC)
- Circuit Board Repair
- Autosampler Repair



We Stand Behind Our Work

Warranty Coverage

INCLUDED WITH INSTALLATION OF A GENTECH CERTIFIED SYSTEM

Our warranty policy is designed to keep your instrument in working order. GenTech will get you started in the right direction when installing your instrument. As long as you continue to partner with GenTech, we can help you stay focused on your research.

STANDARD WARRANTY:

- Parts
- Labor
- Travel

IN-HOUSE REPAIR WARRANTY:

- Parts
- Labor

PARTS ONLY WARRANTY:

- Replacement of Disfunctional Part with Exchange from Customer

 GENTECH SCIENTIFIC	STANDARD WARRANTY	IN-HOUSE REPAIR WARRANTY	PARTS ONLY WARRANTY
Replacement Parts			
Telephone Support	✓	✓	✓
Software Telephone Support	✓	✓	✓
Repair			
Travel/Repair Visits	✓		
Repair Parts	✓	✓	✓
Labor	✓	✓	
Advanced Diagnostics			
Remote Service Hours	✓	✓	✓
Phone Support			
Phone Support	✓	✓	✓

Instruments We Carry

HPLC EQUIPMENT

Waters: 2690, 2695, 2790, 2795

- Detectors: 2487, 2996, 2414, 2475, 996
- Pumps: 1515, 1525
- Autosamplers: 717 and 717 Plus
- Acquity UPLC modules

Agilent/HP: 1100, 1200, 1260 and 1290

Shimadzu: LC-20, LC-30, LC-40 Modules and Systems

Thermo/Dionex: Easy nLC, Accela series, and Ultimate 3000

GC EQUIPMENT

Agilent/HP: 5890A, 5890 II, 6850, 6890A, 6890 Plus, 6890N, 7820, 7890B, 7890A, 8860

- Autosamplers: 7673, 6850, 6890 Series, 7683 A and B Series, 7693
- Headspace: 7694, 7697, G1888

Shimadzu: GC-2010

MASS SELECTIVE DETECTOR (MSD) EQUIPMENT

Agilent/HP: 5973A, 5973N, 5975, 5977A, 5977B

QUADRUPOLE TIME OF FLIGHT (QTOF) EQUIPMENT

Agilent: 6520, 6530, 6540, 6545, 6550, 7200

ICP/MS & ICP/OES EQUIPMENT

Agilent: 710, 720, 7500, 7700

LC/MS EQUIPMENT

Agilent: 6400 Series QQQ

Thermo/Finnigan:

- LTQ Series (LTQ, LTQ XL, Velos and Velos Pro)
- TSQ Quantum Series (Classic, Ultra, Vantage, Access, Endura)
- LTQ Orbitrap Series and Exactive Series
- LXQ

Waters: TQD, Xevo TQ and Xevo TQD

Sciex: API 3200/3200Q, API 5000, API 4000, API 4500, API 5500, API 6500

Shimadzu: 8030, 8040, 8045, 8050, 8060

ACCESSORIES

Leap/CTC: GC PAL, Combi PAL, LC PAL, HTS PAL, HTC PAL

HTA: HT2000H Headspace, HT2800T Two in One, HT3000A Liquid Sampler

Nitrogen Generators

Compressors

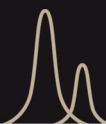
UPS Systems

Don't see what you're looking for here?

We're always acquiring new instrumentation - Call us with your request today!

585.492.1068

SALES@GENTECHSCIENTIFIC.COM



Analytical Instruments Wanted

Sell or Trade Your Unused Instruments



WE BUY GC, HPLC, MS, GC/MS, ICP/MS, ICP/OES

MASS SPECTROMETRY

- **Agilent** 5977, 5975 & 5973 MS
- **Agilent** 6400 Series
- **Thermo** Orbitrap Velos Pro
- **Thermo** Orbitrap Elite
- **Thermo** Q-Exactive Elite
- **Thermo** LTQ XL MS/MS Systems
- **Thermo** TSQ Series - (Endura, Quantiva, Quantis)
- **Sciex** 4000, 4500, 5500, 6500 MS/MS
- **Shimadzu** 8030, 8040, 8045, 8050, 8060

GAS CHROMATOGRAPHY

- **Agilent** 6890, 7890, 8860, 8890 GC
- **Agilent** 7673, 7683, 7693 AS
- **Agilent** 7697 & G1888 Headspace
- **CTC** CombiPAL Autosamplers

ICP/MS & ICP/OES

- **Agilent** 710, 720, 7500, 7700

Analytical Instruments Wanted

Sell or Trade Your Unused Instruments



MS/MS, LC/MS SYSTEMS & ACCESSORIES

LIQUID CHROMATOGRAPHY

- **Agilent** 1100 & 1200 HPLC Systems
- **Agilent** 1260 & 1290 UPLC Systems
- **Waters** 2410, 2414 & 2996 Detectors
- **Waters** e2695 HPLC Systems
- **Waters** Acquity UPLC Systems
- **Waters** Nano Acquity UPLC Systems
- **Shimadzu** LC-20, LC-30, LC-40 HPLC Systems
- **Dionex** Ion Chromatography Systems

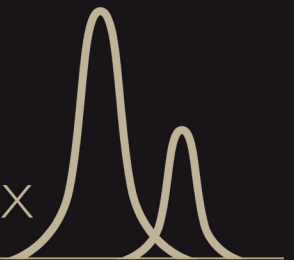


BUY1@GENTECHSCIENTIFIC.COM

WHY BUY NEW?

WHEN YOU DON'T HAVE TO!

AGILENT | THERMO | SHIMADZU | WATERS | SCIEX



GENTECH
SCIENTIFIC