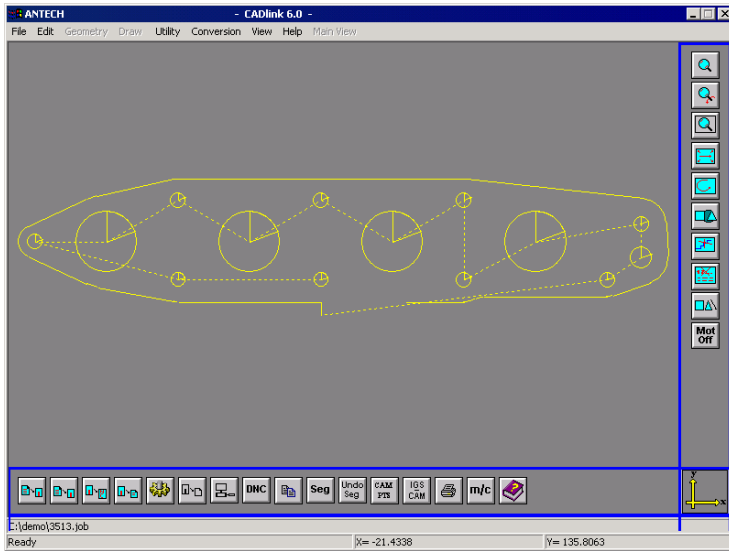


CADlink-8 from Antech is CAD based software for NC programming of CNC WIRE EDM machines. It allows user to take full benefit of geometry making of any CAD software. And with least questionnaire it converts dwg files into NC code compatible with CNC WIRE EDM of various makes. It also has various modules like GEAR/CAM and complex shape programming.

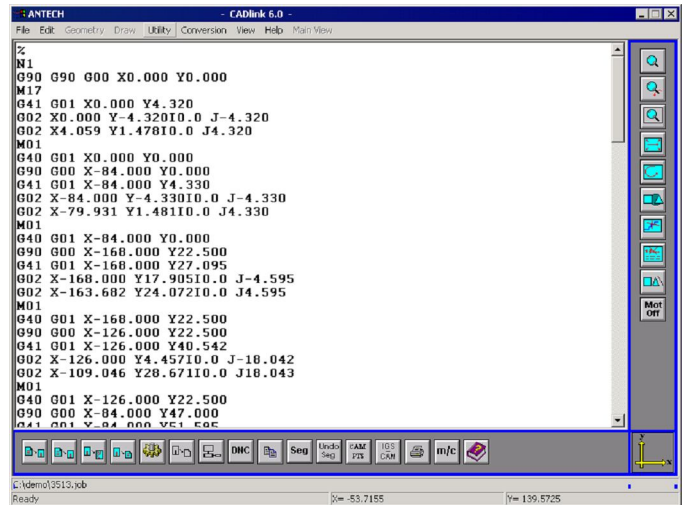
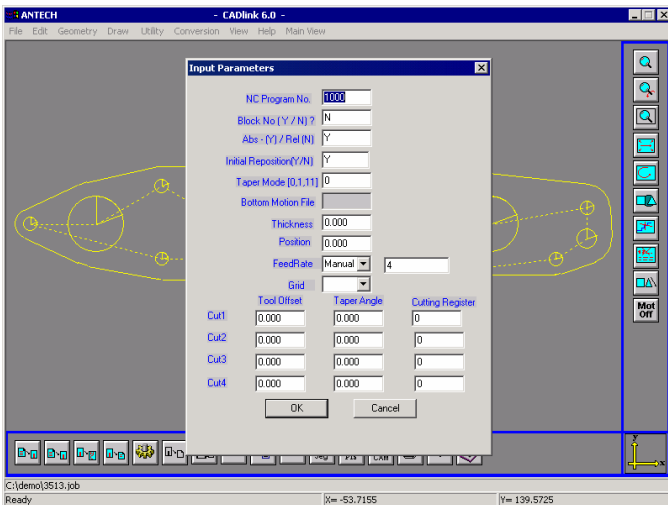


FEATURES

- **Compatible with ACAD 2004. Solid edge/Ideas/ProE/UG.**
- **Runs on Win 98/ WinNT/2000.**
- **DXF to Motion conversion.**
- **Motion to NC conversion.**
- **Post processor.**
- **DNC link.**
- **GEAR/CAM module.**
- **Variable Offset.**
- **Variable Taper.**
- **Core less machining.**
- **BTR RE93 for old NC.**

1. CAD TO CUTTER PATH :

After completing profile drawing in CAD, user can call CADlink module & prepare data for cutter path generation. No polyline concept. Module is intelligent enough to overcome small discontinuities (common problem with CAD users) and generates tool path automatically with erode length and move length. Facility of generating reverse program for more than single cut is also available with this module. Facility of converting Dxf file to Motion is also available.



2. Cutter PATH TO CAD :

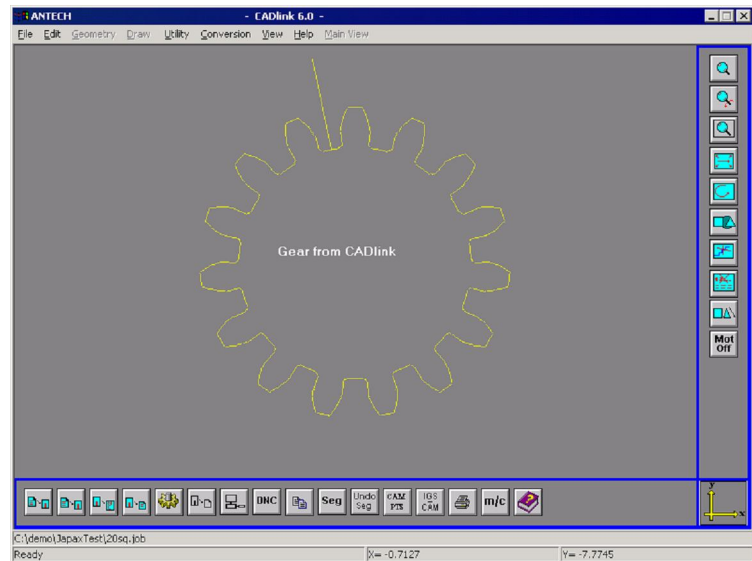
Cutter path file can be converted to IGES or script file, which can be opened as new drawing in any CAD enable user to create Gear profiles. This will be very useful for making any cavities with involute curves. CAD does not have any gear profile generation facility.

3. POST PROCESSOR :

Cutter path file is universal and is converted to final NC code with this module. Post processors **SODICK, JAPAX, FANUC, AGIE, SUPERCUT, CHARMELLES, MITSUBISHI, ARD, SMEAR, JOEMER, ONA** etc are presently available and generation of new one does not take much time. Post processor module take necessary inputs from the user and generates NC code compatible with CNC control.

4. GEAR:

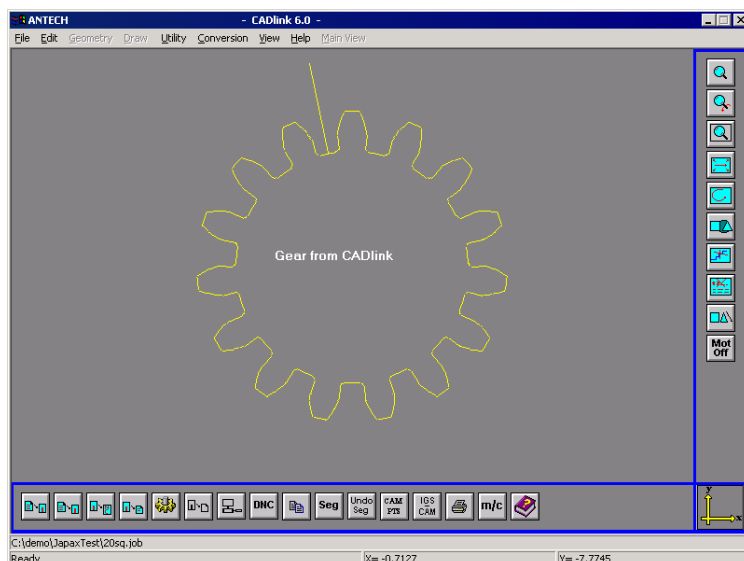
This is a standalone and specialized program for gear profile generation. It takes minimum input from user like module, no. of teeth and generates various parameters like PCD, BCD, TW, PA, RR, TR, MD, RD etc. User is allowed to provide allowances to this & with a press of button, it generates NC code. It also has additional definitions of Gear like with distance measured over teeth and distance measured over rollers. It also has shrinkage option. This can transferred to CAD as well.



5. CAM :

Specialised module to generate CAM profile with the help of CAD. CAM profile is an intelligent curve passing through given number of points / roller path / points with constant rise etc.

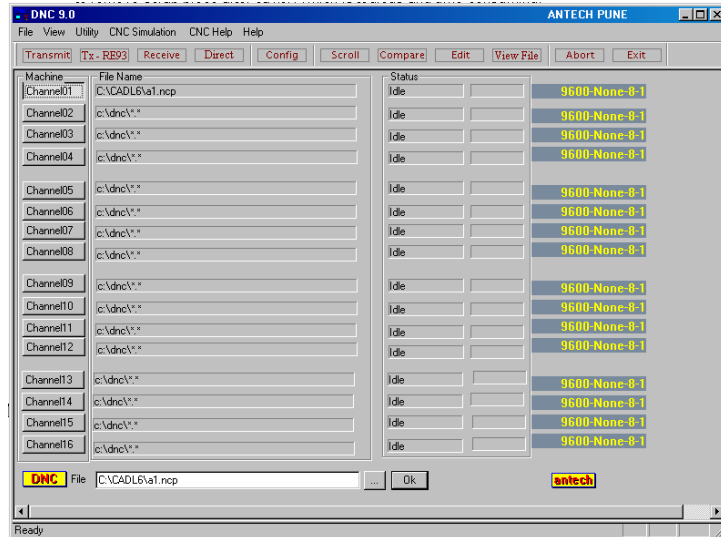
6. COMPLEX SHAPE PROGRAMMING:



Specialized module takes tool cutter path for top and bottom separately and generates 4 axis NC code with X Y Z co-ordinates. This is required for making extrusion dies required for manufacturers of jewelers and aluminum extrusion die manufacturers.

7. DNC EQUIPMENTS :

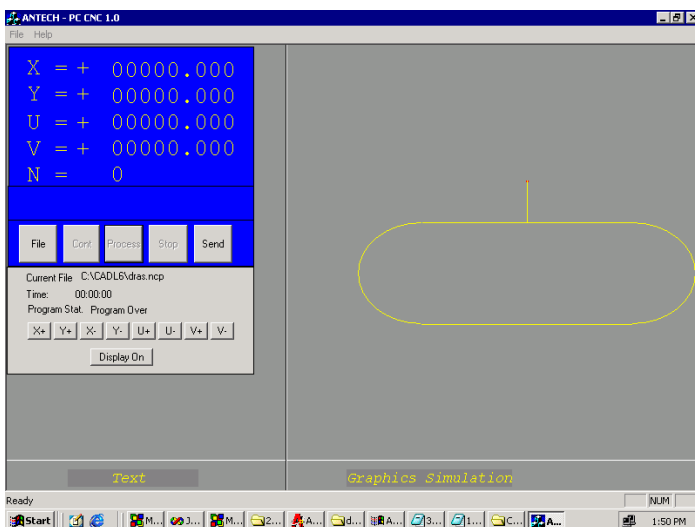
Generated NC programs can be transferred to CNC machines directly via RS232 port. Once DNC is active at PC end, NC programs can be called from CNC. This module can be used only if RS232/422 port is available with CNC. If RS232 port is not available, other DNC peripherals like RE93, 20 MA, TTY can be used for PC-CNC communication. Multiple CNC machines can be connected to DNC PC with additional hardware.



8. CORELESS MACHINING : (For WIRE EDM)

In case of multi cavity jobs operator needs to cut the wire tool after each cavity, remove scrap pieces, move CNC to next cavity and rethread the wire to start machining. In case if profiles are small time required for cutting and threading of wire is reasonably high. Now machines are available with automatic threading however still operator needs to be alert to remove scrap piece after each cavity, which is tedious and time consuming. With coreless machining option, tool cutter path is generated in such a way that scrap piece will not be generated and hence there will be an uninterrupted program execution. This extremely useful and economical at Electronic industry where there are number of small cavities to cut a single die. This is under development.

9. PC-CNC :



It is a PC based CNC controller. If loaded on PC can drive 4 axis of CNC WIRE CUT machine. It operates with printer port and does not need any add on card. This software is used for running old make Japax CNC WIRE CUT, replacing old NC controller. It works with an interface PCB which is compatible with NC controls of Old AGIE, CHARMELES and JAPAX WEDM.

For Further Information contact

ANTECH MICRO SYSTEMS PVT LTD

**4 Chandramohini Apt, 1227 Shukrawar Peth, Subhas nagar
Pune – 411 002.**

Tele FAX : 020 – 32921973 Cell : 09823041317 Email : antechmicro@vsnl.com

Email: antechmicro@vsnl.com, Visit us: www.antechmicro.com