



ERMAKSAN



FIBER LASER CUTTING MACHINES
TUBE CUTTING MACHINES
PLASMA CUTTING MACHINES
PRESS BRAKES
SHEAR CUTTING MACHINES
3D PRINTERS

ALL PRODUCTS

“Ermaksan is a global technology company that offers innovative solutions to industrial life.”



Who We Are ?

Ermaksan produces innovative, high-quality, and high value-added products and solutions with its brands. In its journey exceeding half a century, it has been taking determined steps towards the future by maintaining its strong stance in the fields of sheet metal processing, additive manufacturing, optoelectronics, and advanced defence technologies.

Continuing its investments on the path of sustainable growth without slowing down, Ermaksan contributes to efficient production in more than 120 countries through ERMAKUSA in the USA, ERMAK Deutschland GmbH in Germany and its various other distinguished dealers around the world. In order to meet the customer expectations of today's rapidly changing world and to offer the manufacturing technologies of the future today, the company produced Turkey's first metal 3D printer with the brand ERMAKSAN ADDITIVE and offered it to the additive manufacturing industry. EON PHOTONICS brand, which has Turkey's first private sector semiconductor Optoelectronic R&D centre, continues its production and development activities of high-tech products such as laser technologies, FBG sensors, CNC controllers, and Industry 4.0 applications.

With the innovative perspective of 21st century, Ermaksan continues its activities with the aim of being among the world's leading manufacturers in the fields of technology and R&D. By constantly monitoring new trends and customer expectations, Ermaksan designs and manufactures advanced technology, high value-added, environmentally friendly and energy-saving machines, and takes firm steps towards a more sustainable future by using resources effectively and efficiently.

Ermaksan's Innovative Product Approach

At Ermaksan, innovation is part of our DNA, driving us to continually push the boundaries of industry standards. With an unwavering commitment to excellence, we relentlessly pursue innovation, integrating the latest technological advancements into our products to deliver unparalleled performance and reliability.

Our diverse portfolio features a wide array of advanced solutions, each meticulously designed to showcase top-tier engineering and innovation. Whether you need state-of-the-art fiber laser cutting machines for precision cutting across various materials, or precision-engineered press brakes for bending and shaping sheet metal with unmatched accuracy, we have the perfect solution to elevate your operations.

Furthermore, our plasma cutting systems offer unparalleled versatility and performance, allowing you to effortlessly cut various materials with speed and precision. Additionally, our range of 3D printers enables you to unlock the possibilities of additive manufacturing, transforming your designs into reality with unmatched accuracy and creativity.

Explore our comprehensive range of advanced solutions and discover how our cutting-edge technologies can empower your business to thrive in today's competitive landscape.



PAGE
06

LASER CUTTING

- FIBERMAK MOMENTUM GEN-5
- FIBERMAK SIDE LOADING
- THUNDERBIRD LASER
- SPECIAL MACHINES
- LASER AUTOMATION



PAGE
16

PRESS BRAKE

- GREEN PRESS FX SERVO
- EVO III
- BSCRW
- SPEED BEND PRO
- POWER BEND FALCON
- POWER BEND PRO

- ECO BEND EXPERT
- POWER BEND ST
- MICRO BEND
- HEAVY DUTY



PAGE
12

TUBE CUTTING

- FIBERTUBE
- ECO-FIBERTUBE



PAGE
25

SHEAR CUTTING

- SPECIAL MACHINES
- CNC HVR
- CNC HGD
- CNC HGS

- GMR
- EKM
- EKN F/V



PAGE
14

PLASMA CUTTING

- EPL 3/5 AXIS PLASMA
- SMART PLASMA



PAGE
32

3D PRINTER

- ENAVISION 120
- ENAVISION 150 DUAL
- ENAVISION 165
- ENAVISION 250
- CUSTOMIZED SOLUTIONS





More info

Maximize Your Performance !

Introducing the FIBERMAK Momentum Gen-5, engineered to fulfill your every requirement. This cutting-edge system ensures unparalleled efficiency and top-tier performance, achieving remarkable cutting speeds thanks to its servo motor and 4G acceleration capabilities. Seamlessly integrated with Industry 4.0 standards, the intuitive control panel, meticulously crafted by Ermaksan engineers, enhances your production workflow by streamlining operations and harnessing the power of cutting-edge technology and engineering expertise. Plus, with its latest enhancements, you'll see a swift return on investment, making it a smart choice that pays off quickly.

- 2 kW – 30 kW power option
- 5 axis bevel cutting option
- ± 0.03 mm positioning accuracy
- 21.5" multi-touch control panel
- AI-aided manufacturing
- 2.5 - 4G acceleration option



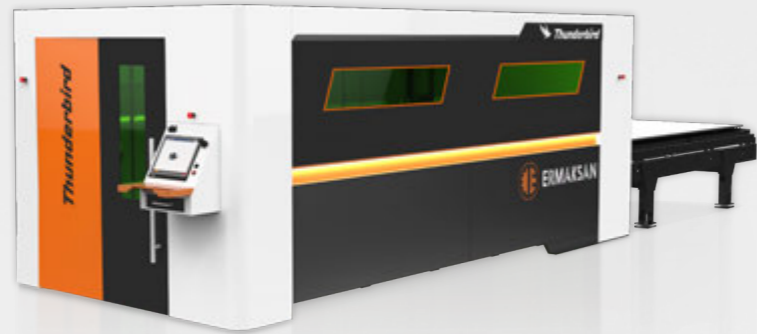
More info



Compact Design Providing 20% Space Advantage

Introducing the FiberMak SL with its innovative side-loading design, perfect for workshops with space constraints while maintaining G-Force standards and uncompromised quality. Requiring just 68 m2 of floor space for standard 3x1.5m machines, including the loading-unloading unit, it offers a compact solution without compromising on performance. Ideal for workplaces with limited hall space, this side-loading fiber laser machine ensures maximum productivity. Leveraging the high acceleration of G-Force series servo motor models, it slashes production time, boosting productivity by an average of 15% per hour.

- 2 kW – 30 kW power option
- Nozzle changer option
- 3x1,5 - 4x2 m length options
- 21.5" multi-touch control panel
- 6000 kg max. load capacity
- 2.5G acceleration



More info

Economical in Every Aspect

Experience seamless entry into the world of fiber laser cutting with the THUNDERBIRD. Its compact structure eliminates the need for expensive equipment, making it an accessible option for beginners. Designed specifically for 2D laser cutting, this entry-level machine boasts low investment costs without compromising on quality components, ensuring a competitive edge in the market. Choose from a range of laser sources, including IPG/MAX 2, 3, 4, and 6kW options, to suit your precise requirements.

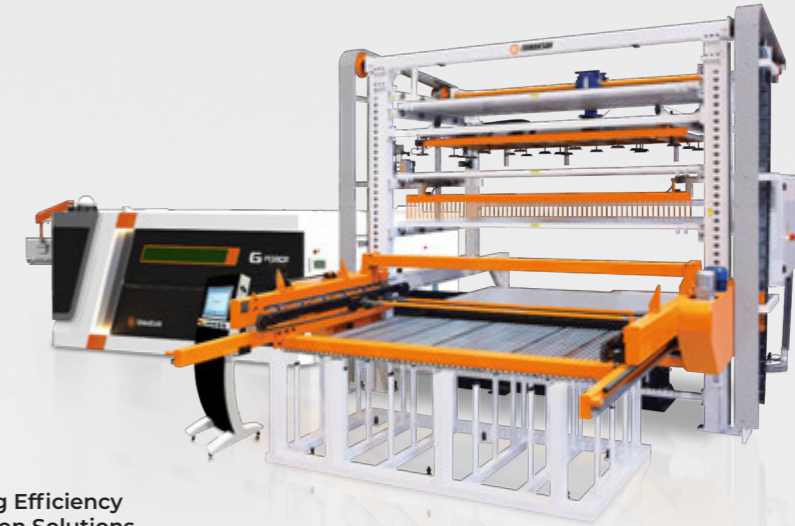
- 2 kW – 6 kW power option
- 3x1.5m table size
- 1.5G acceleration
- Simultaneous table change
- 8500 kg machine weight
- CALBEC option



More info

Boost Manufacturing Efficiency with Laser Automation Solutions

Introducing laser automation, a cutting-edge system designed for the unmanned loading and unloading of sheet metals for laser cutting machines. This innovative solution offers unparalleled reliability, flexibility, and user-friendliness. By implementing an automatic laser system, you can potentially increase your production capacity by over 60%, depending on various factors such as material type, thickness, size, and nesting. Incorporating smart laser automation into your metal processing departments not only streamlines factory operations but also leads to significant cost savings. Ermaksan offers a comprehensive range of specialized solutions to meet even the most specific laser automation requirements.



- Fully compatible with Fibermak
- Uncut sheet stock area
- Fully automatic sheet metal loading and unloading
- Zero time loss in work transitions
- Work list and work repetition features
- Cut sheet stock area



Tailored Machines for Unique Applications

In addition to our standard product range, we proudly provide turnkey solutions tailored to meet diverse demands within the laser cutting industry. Our lineup includes laser cutting machines in various sizes and configurations, meticulously crafted to match specific customer requirements. Designed for large-format projects, these robust machines streamline processing of long and wide sheets in a single operation, thereby saving valuable time and labor. By efficiently handling multiple small workpieces simultaneously, they not only boost productivity but also confer a competitive edge to their users.



More info

- Different size and power options
- Bevel cutting options
- Advanced engineering studies
- Factory automation
- Customized configurations
- Industry 4.0



More info



More info



Fully Automatic Solutions

The FIBERTUBE is an advanced tube and profile fiber laser cutting machine designed for high efficiency and precision. It features a fully automatic loading system, eliminating the need for operator intervention and streamlining the cutting process. This machine is capable of handling a wide range of tube shapes and sizes, including round, square, and Rectangular profiles, with diameters up to 150x7320mm. It offers exceptional cutting specifications, accommodating round tubes with diameters from 20 to 150mm, Square profiles from 20x20 to 140x140mm, and rectangular profiles from 20x30 to 100x150mm.

- | | |
|---|---------------------------------------|
| • Fully automatic loading systems | • BECKHOFF CP 6242 CNC |
| • Tube diameters from 20 to 150 mm | • PRECITEC ProCutter 2.0 Cutting Head |
| • Tubes and profiles up to 4000kg in weight | • Lantek/Metalix (MTube) CAD/CAM |

Semi-Automatic Solutions

The ECO-FIBERTUBE is a versatile tube and profile fiber laser cutting machine designed for efficiency and flexibility. It offers both semi-automatic and manual operation options, providing users with options to suit their specific needs and preferences. This machine boasts exceptional processing capabilities, capable of handling round, square, and rectangular profiles with diameters up to 200x6500 mm. Its cutting specifications cover a wide range, accommodating round tubes from 20 to 200mm in diameter, square profiles from 20x20 to 140x140 mm, and rectangular profiles from 20x30 to 100x150mm.

- | | |
|--|---|
| • Semi-automatic/ Manual loading option | • BECKHOFF CP 2215 CNC |
| • Tube diameters from 20 to 200 mm | • PRECITEC LightCutter Autofocus Cutting Head |
| • Tubes and profiles up to 960kg in weight | • Lantek/Metalix (MTube) CAD/CAM |



High Quality, Long Lasting Performance

Experience unmatched durability and lasting performance with our EPL Plasma series cutting machines. Built with a robust body boasting both dynamic and static rigidity, these machines are precision processed to ensure top-notch quality. Enhanced by Hypertherm technologies, they offer unparalleled strength and efficiency. Available with XPR and series power options to suit diverse customer needs, our EPL Plasma cutting machines deliver over a 40% increase in consumable life and more than 50% savings in operating costs, making them the ideal choice for long-term reliability and cost-effectiveness.

- XPR plasma power supplies
- True Bevel™ technology
- True Hole™ technology
- Pipe and profile cutting technology
- Oxygen cutting station
- PlateSaver™ technology

Maximize Productivity with Cost-Effective Solutions

The EPL Smart Plasma Series offers both high productivity and economical operation, providing cutting-edge plasma and oxygen cutting technologies tailored to your needs. Equipped with Hypertherm's MAXPRO power unit for high tonnage and capacity applications, as well as the POWER-MAX for increased cutting speeds, this series ensures optimal performance without compromising on efficiency or quality.

- MaxPro/Powermax plasma power supplies
- Auto gas console option
- ProNest LT software
- Compact structure
- Oxygen cutting option
- Filter unit



More info



More info



Sustainable Technology for a Greener Future

Introducing the Green Press FX Servo press brake, a part of our environmentally friendly machine lineup. With its quiet operation and low energy consumption, this machine sets a new standard in eco-conscious manufacturing. Compared to hydraulic press brakes, it consumes approximately 69% less energy and operates without the need for hydraulic oil. The absence of hydraulic components like filters and sealing elements minimizes maintenance costs, making it a cost-effective choice for businesses. Moreover, its oil-free operation eliminates the risk of environmental contamination from oil leaks, ensuring a cleaner and safer working environment for your team.

- | | |
|--|--------------------------------|
| • 1.6 - 2- 2.6 - 3 m length options | • Body guard light curtain |
| • 40-...- 100 ton capacity options | • ER99, Delem 66T |
| • Standard 6 axes - Y1, Y2, X, R, Z1, Z2 | • 98% energy saving in standby |

Next Generation Technology

As manufacturers increasingly prioritize energy efficiency and social responsibility, including environmental awareness and sustainable energy usage, the landscape of production is evolving. In response to these shifting priorities, we've leveraged over 30 years of press brake production expertise and integrated today's most cutting-edge technologies to introduce the EVO III series hybrid press brakes. This next-generation solution not only meets but exceeds the expectations of our customers, offering unparalleled performance and efficiency while aligning with their environmental and social responsibility goals.

- | | |
|--|--|
| • 2.6 - 4.1 m length options | • Very high speed cycle (200 - 10 - 190) |
| • 100 - 260 ton capacity options | • Large throat depth - 410 mm |
| • High stroke (275) and daylight (550) | • Std. 6 axes - Y1, Y2, X, R, Z1, Z2 |



More info



More info



This cabin design is offered as an option upon customer request for all press brakes.



Faster, Smarter, and Greener

Experience the BSCRW Series Ball Screw Servo Electric Press Brake, an advanced machine engineered to set new standards in productivity, precision, and sustainability. Equipped with a servo-driven ball screw mechanism, the BSCRW Series delivers unparalleled accuracy and high-speed positioning of the bending beam, ensuring flawless, repeatable results with every cycle. Available in a range of bending capacities and lengths, this press brake is designed to meet the demands of modern manufacturing.

- 40–60 Tons of Bending Force
- 1300/1600/2100 mm Bending Length
- Standard 4 Axes (Y1, Y2, X, R)
- Speeds of Up to 300 mm/s
- 100% Electric
- Ergonomic design

Experience Unrivaled Precision and Efficiency

In today's business landscape, efficiency is paramount for maintaining a competitive edge and maximizing profitability. That's why we've developed the Speed Bend Pro series press brakes, engineered to optimize production times and elevate your business efficiency. With swift and high-quality production capabilities, these press brakes empower your operations to thrive in even the most competitive environments. The Speed Bend Pro series features an expanded stroke for both the upper beam and daylight, enabling seamless execution of deep bends, particularly with longer dies. This advancement exemplifies our dedication to precision and efficiency, reshaping the possibilities of modern manufacturing.

- Standard 1.27 - ... - 6 m length options
- Standard 40 - ... - 600 ton capacity options
- 170 -...- 610 mm stroke, 387 -...- 1100 mm daylight
- Very high speed cycle (200 - 10 - 190 mm/s)
- 350 -...- 610 mm throat depth
- Standard 6 axes - Y1, Y2, X, R, Z1, Z2



More info



More info



Stronger, Faster and Deeper Bends

Introducing the Power-Bend Falcon Series, meticulously redesigned to meet user preferences and emerge as a uniquely capable machine with distinctive electronic and mechanical features. Renowned for its exceptional performance, this series leads the way in enhancing productivity while ensuring cost efficiency. Equipped with an intuitive CNC controller and requiring minimal hydraulic maintenance, the Power-Bend Falcon Series empowers operators to streamline operations and optimize efficiency. Elevate your bending capabilities with this series, setting new benchmarks for strength, speed, and depth of bends.

- 1 - ... - 6 m length options
- 40 - ... - 600 ton capacity options
- 170 - ... - 375 stroke 387- ... -650 daylight options
- High speed cycle (180 - 10 - 135 mm/s)
- 350 - ... - 510 throat depth
- Standard 4 axes - Y1, Y2, X, R

The Ultimate Fusion of Speed and Power

Experience unmatched efficiency with the Power-Bend Pro Series, meticulously crafted to cater to the evolving demands of users. Boasting a unique fusion of electronic and mechanical hardware, these press brakes deliver exceptional results across a spectrum of materials, from standard to stainless, thin to thick sheets. Designed to minimize production costs while maximizing output, they stand out for their high-speed performance. Equipped with user-friendly CNC control panels and low-maintenance hydraulic systems, the Power-Bend Pro Series offers a seamless workflow, making it the preferred choice for businesses seeking the perfect blend of speed and power.

- 1 - ... - 6 m length options
- 40-...- 400 ton capacity options
- 170 - ... - 375 strokes 387- ... -650 daylight options
- High speed cycle (180 - 10 - 135 mm/s)
- 350 -...- 510 throat depth
- Standard 3 axes - Y1, Y2, X



More info

An Affordable Solution to Elevate Your Business

Meet Eco-Bend, the CNC Hydraulic Press Brake designed to enhance your business's profitability without breaking the bank. With user-friendly features, both standard and optional, Eco-Bend offers a cost-effective solution that adds economic power to your operations. Equipped with a standard CNC control unit boasting a 2D graphic display and advanced programming capability, Eco-Bend ensures efficiency and productivity. Experience the benefits of low investment costs and high efficiency as Eco-Bend propels your business forward with its economical solutions.

- 80 – 200 tons of bending force
- 2600 – 4270 mm bending length
- Motorized/Manual crowning options
- Standard 3 axes Y1, Y2 and X
- 12" 2D touch screen
- Fixed front support arms



More info

Experience Effortless Bending, Right from Your Seat !

It is the perfect solution for our customers working with small and thin parts up to 1.27 meters, offering advantages in both cost and working area. Designed with ergonomics in mind, it boasts features such as a seating area with knee gap, adjustable working desk, height-adjustable CNC pendant arm with shock absorber, and integrated lighting systems, ensuring utmost comfort and ease of use. Every detail, from the adjustable seat to the controller arm and internal lighting system, has been meticulously crafted to enhance ergonomics, fostering a more comfortable and productive working environment.



- Up to 1.27 meters length
- Bending force up to 60 tons
- Working desk
- Height adjustable CNC pendant arm
- 250 - ... - 410 mm throat depth
- Backgauge stroke (X/R) 500 / 250 mm



More info

Unlock Efficiency in Limited Spaces

Introducing Micro-Bend, the most efficient and smallest Hydraulic Press Brake in its class. With its compact design, low investment cost, and exceptional efficiency, Micro-Bend is the perfect solution for space-constrained environments. Its ergonomic design and single axis backgauge ensure ease of use, while boasting impressive capabilities such as bending 5 mm black steel sheet full length with 1 m x 40 tons of press power.

- 40 tons of bending force
- 1000 mm bending length
- Standard 3 axes Y1, Y2 and X
- Double foot pedal
- Front support arms
- Ergonomic design



More info



The Optimal Solution for High Tonnage Bends

High tonnage press brakes, designed and produced under the esteemed Ermaksan brand, are available in various sizes and tonnages to meet diverse customer needs. These press brakes enable you to operate at full capacity, minimizing downtime and maximizing productivity. Renowned for their durability, they deliver high performance even in the hardest conditions, making them ideal for tough bending operations where efficiency is paramount.

- Different size and tonnage options
- Tandem / Tridem option
- Full-length bending
- Operating at full capacity
- Conical pole bends
- Automatic sheet loading/unloading systems



More info



More info



Flexible Solutions for Diverse Requirements

Ermaksan specializes in developing shears tailored to meet the distinct needs of different industries, offering precise solutions that optimize production. Customized to specific customer requirements, our shears are engineered with an innovative perspective and advanced engineering efforts, ensuring effortless cutting even with the most challenging materials. With hardened and ground blades, they deliver impeccable performance and enable long service life, even in the most demanding conditions, thanks to their durable and rigid construction.

- Different size and capacity options
- Customized configurations
- Advanced engineering studies
- Special throat depths
- Full/Semi-automatic systems
- Special safety systems

Streamlined Efficiency, Precision Cuts

With our automatic solutions, achieving perfect cuts has never been easier. Simply input the length, thickness, and type of metal sheet into the user-friendly programmable controller, and watch as the blade gap, cutting angle, and cutting length are automatically and instantly adjusted. This level of shears not only offers flexibility for accommodating various production requests but also eliminates downtime, ensuring high efficiency throughout the cutting process.

- 3 - 4 - 6 - 8 (opt.) m length options
- 350 mm throat depth
- 6 - ... - 40 mm capacity options
- ErCut7 Controller
- Automatic hydraulic cutting angle adjustment
- Automatic hydraulic feeler adjustment



More info

Impressive Cutting Solutions

Our HGD Series shears are meticulously designed to excel in cutting sheets ranging from 6 to 20 mm thickness. Crafted with high-quality materials and precision workmanship, these shears are built to withstand heavy-duty conditions for many years without any issues. The robust mono-block frame ensures rigidity even under maximum capacity, resulting in high-quality cuts and clean surfaces every time.

- 3-4 m length options
- 350 mm throat depth
- 4-...-20 mm capacity options
- Automatic hydraulic feeler adjustment
- ErCut7 Controller
- 2-side top blade



More info



High-Performance, Cost-Effective Solutions

Our machine offers both high performance and economic efficiency, boasting a modern design, robust steel welded construction body, and exceptional cutting quality. The top cutting beam ensures maximum durability, while the quick and precise blade gap adjustment system, conveniently located on the right side of the machine, allows for non-gradual adjustments from a single side, ensuring top-quality cutting results.

- 2-2.6-3-4 m length options
- 4-side bottom blade
- 6-8 mm capacity options
- ErCut7 Controller
- 2-side top blade
- Automatic hydraulic feeler adjustment



More info

More Work in Less Time

Manufactured by ERMAKSAN, renowned for its globally proven quality and extensive experience in sheet metal processing, the Guillotine Shear Machine with Reducer (GMR) is engineered to deliver superior performance even in the most demanding operating conditions. Designed with a welded construction that ensures both static and dynamic rigidity according to modern technology, this machine allows for more work to be accomplished in less time, making it an ideal solution for boosting productivity.

- 2.6 m x 4 mm capacity option
- ErCut5 CNC
- 750 mm stroke, non-folding backgauge
- 100 mm throat depth
- 2-side top blade
- 4-side bottom blade



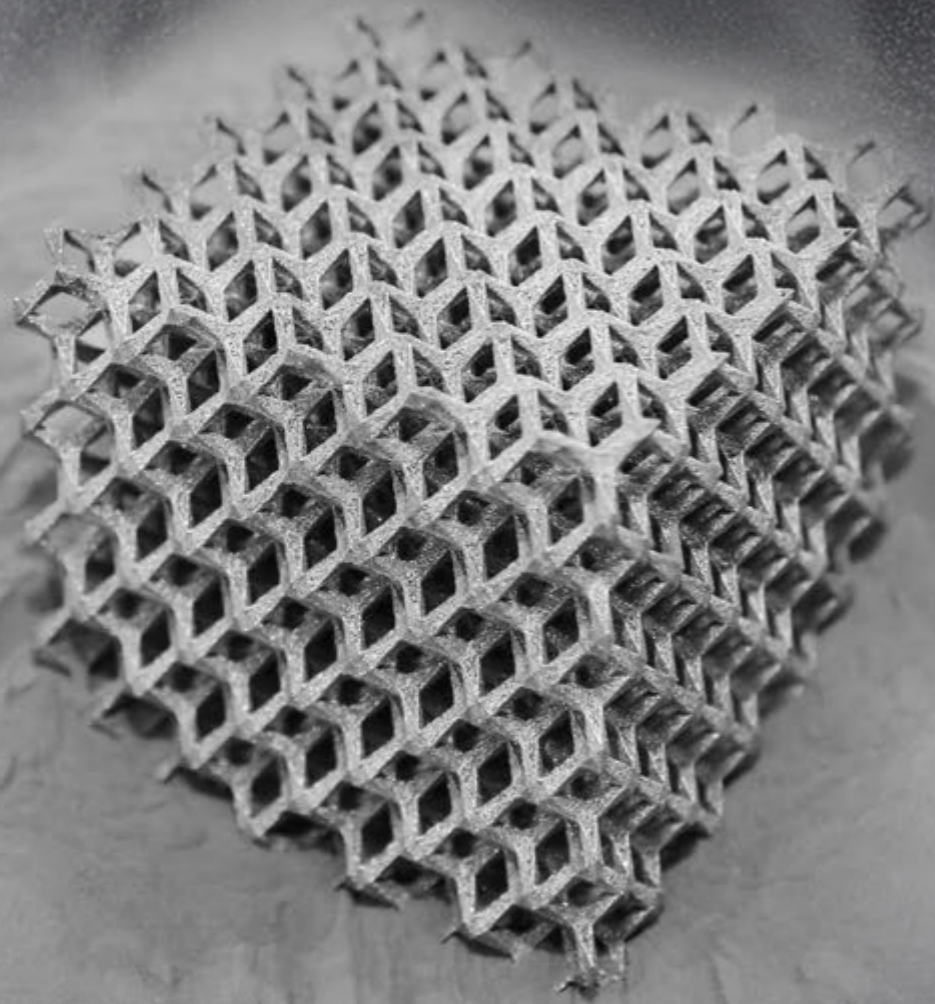
More info

Five Jobs on One Machine

The enhanced EKM series combined shears are meticulously designed using 3D CAD programs and manufactured with precision CNC machines. Featuring high-quality components, the EKM series offers punching, straight profile cutting, bevel profile cutting, solid square and circular profile cutting, flat sheet metal cutting, and corner notching stations all in one machine. With the ability to swiftly switch between processes without the need for tool changes, you can significantly boost productivity by completing multiple tasks in a short amount of time.

- Notching station
- Punching station
- 40-45-60 tons single cylinder, 55-...-175 tons double cylinder capacity
- Square / round cutting station
- Flat sheet metal cutting station
- L-profile cutting station







More info



More info



Customized Solutions for Varied Angles

ERMASAN EKN angle-adjustable hydraulic corner notching machines offer robust construction with a steel table that ensures both static and dynamic rigidity, along with superior upper beam material. The machine's upper table is meticulously processed with T-grooves to enable precise cutting. Equipped with an automatic feeler setting system, it eliminates the need for separate adjustments when cutting sheet metals of different thicknesses.

- T grooved upper table
- 4 hydraulic pressure cylinders
- Movable foot pedal
- 200x250 mm blade length
- 30 strokes per minute
- Auto feeler adjustment

Big Achievements on Small Sizes

Investing in the ENAVISION 120 additive manufacturing machine provides a fast, reliable, and cost-effective solution. With its compact design and a production volume of Ø120 mm x 80 mm, ENAVISION 120 seamlessly blends practical functionality with ergonomic design. Tailored for laboratories and office environments, the new design is the perfect solution for applications in dental, medical, universities, and research institutes.

- Production Area Ø 120x80 mm
- Machine Size 960x1120x2000 mm
- Machine Weight 800 kg
- 300 w Fiber Laser
- Adjustable Layer Height 20 - 100 µm
- Software Materialise Magics



More info



More info



Dual Laser Technology: Up to 50% Faster Production

The ENAVISION 150 Dual Metal 3D Printer is designed to optimize production efficiency and precision, making it an ideal solution for areas such as dental, medical, rapid prototyping, research institutions, and customization. This advanced 3D printing system is equipped with dual-laser technology, enabling faster and more accurate production of complex metal parts.

With its dual-laser configuration, the ENAVISION 150 reduces build times by up to 50%, significantly increasing productivity while maintaining high quality and repeatability. This enhanced performance not only accelerates output but also lowers operational costs without compromising precision or reliability.

- Production Area
Ø 150x70 mm
- Machine Size
1120x820x1900 mm
- Machine Weight
750 kg
- 2x300 w
Fiber Laser
- Adjustable Layer Height
20 - 100 µm
- Software
Materialise Magics

Enhanced Productivity on Compact Platforms

ENAVISION 165 with a production volume of Ø165 x 100 is presented to its users with a round production platform. It is designed for both industrial and laboratory environments with its compact and ergonomic structure. ENAVISION 165 developed to provide maximum productivity with lower investment costs, especially in the dental and medical sectors. It allows for customized applications in the dental and medical industries, also ideal for use in office production environments such as universities and research institutes.

- Production Area
Ø 165x100 mm
- Machine Size
1410x1400x1880 mm
- Machine Weight
1100 kg
- 300 w
Fiber Laser
- Adjustable Layer Height
20 - 100 µm
- Software
Materialise Magics



More info

Excellence at Every Layer

Ermaksan Additive offers ENAVISION 250 to overcome complex difficulties in the industrial field and to make easy production of complex geometries. With its open-access architecture, it allows the use of different types of powder in various sectors. ENAVISION 250; It has a production volume of 250 mm x 250 mm x 300 mm. Offering flexibility and unlimited freedom to users with its open parameter structure, this model is equipped with a single and dual laser versions to meet different customer demands.

- Production Area
□ 250x250x300 mm
- Machine Size
2700x1460x2350 mm
- Machine Weight
2400 kg
- 500 w
Fiber Laser
- Adjustable Layer Height
20 - 100 µm
- Software
Materialise Magics



More info



Small to Large: Together at Every Scale

In addition to our standard product portfolio, Ermaksan Additive provides tailored solutions for those with specialized requirements in the additive manufacturing realm. Our dedicated technical team is committed to delivering the precise additive manufacturing machine you require. We offer turn-key solutions accommodating various configurations, from machine table dimensions to scanning models, from resonator to scanner head selection, and even specialized powder and parameter considerations.

- Production Area
□ 800x800x500 mm
- In-Process Quality Assurance Technology
- 4x1000 w
Fiber Laser
- Automatic Powder Circulation System

ALL PRODUCTS



ERMAKSAN

İşiktepe OSB Mah. Lacivert Cad. No:8
16065 Nilüfer | Bursa | Türkiye

T : +90 224 294 75 00 F : +90 224 294 75 44
ermaksan.com.tr / sales@ermaksan.com.tr



ermaksanmachine



ermaksanTV