

# MG SRL

machines for sheet metal and profiles deformation





# INDEX

- [Introduction](#)
  - [History](#)
  - [Values](#)
  - [Delsy](#)
  - [Technology](#)
  - [Growth](#)
  - [MG in numbers](#)
  - [Industrial](#)
  - [Aftersales](#)
  - [Help desk](#)
- 

**OVER 62 YEARS OF HISTORY** in which we ranked among the leading manufacturers in the world: a strong brand, leader in technological innovation and customer service.

**OVER 62 YEARS OF EXPERIENCE** that have allowed us to expand production and the sales network all over the world, thanks to the constant search for quality, the use of cutting-edge components and solutions with a global footprint, proud to export The Made in Italy.



# THE HISTORY

MG SRL was born in Fossano, in the Cuneo area, in 1959.

Founded by Giovanni Roccia and Bruno Giraudo, it took its first steps as a contractor workshop of the "Bongioanni Spa".

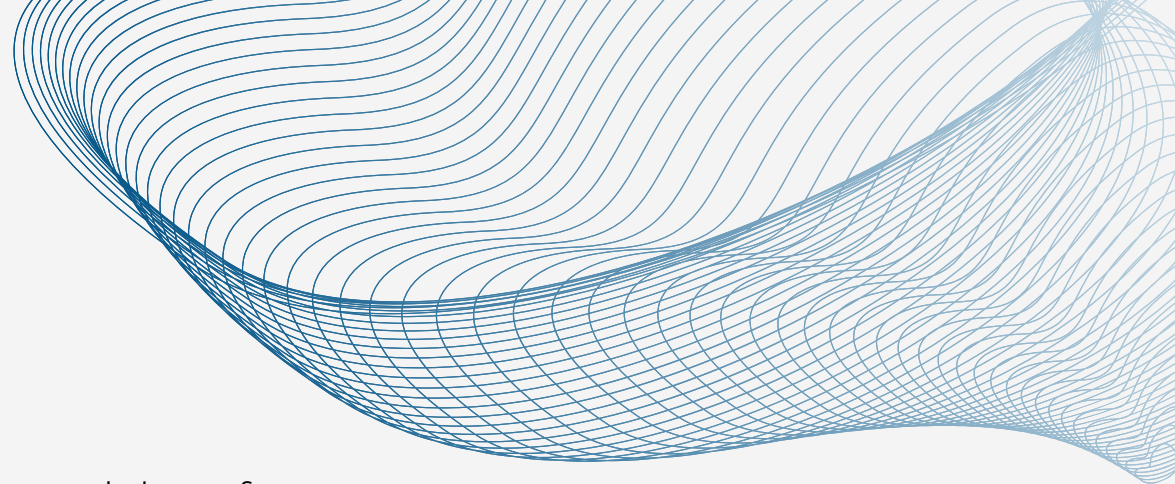
In 1981 the construction of machines for bending sheet metal and profiles began, a few years later the company concentrates efforts and investments aimed at improving production.

With a local unit in Forlì, the leading company subsequently specialized under the guidance of partners Mauro and Massimo Roccia, Giorgio Giraudo, sons of the founders, and Franco Barca who takes care of the design in the branch.

Currently the company is under the guidance of Massimo Roccia and Franco Barca.

**1959**

**Present**



01

—  
INTEGRITY

02

—  
RESPECT

03

—  
ENTHUSIASM

04

—  
COLLABORATION

05

—  
TEAM PLAY

06

—  
PRIDE

07

—  
EXCELLENCE

08

—  
COMMITMENT  
TO RESULTS

09

—  
TRAINING

# THE VALUES



# We do not only produce machines ***we create solutions!***



## **TECHNICAL DISCUSSION**

During this phase, the customer has to clearly expose his willings and intentions, together with the sales and technical departments that are ready to help and support him to find the best solution.



## **PROJECT PRESENTATIONS**

MG can show its expertise and propose a customized and tailor-made solutions to fulfil the customer's requirements. The whole MG team is involved in this phase.



## **LOOKING FOR THE BEST**

Every customization and every project has its own characteristics and for every application we focus our attention on details. The applied technology we decide to implement on a line at MG, is the key to a successful project.



## **GOAL - ORDER**

Once both the customer and MG agreed on the proposed solution, everything is put on paper and a new serial number is created so that MG engineering department can start engineering the machine.

**STEP 1**

**STEP 2**

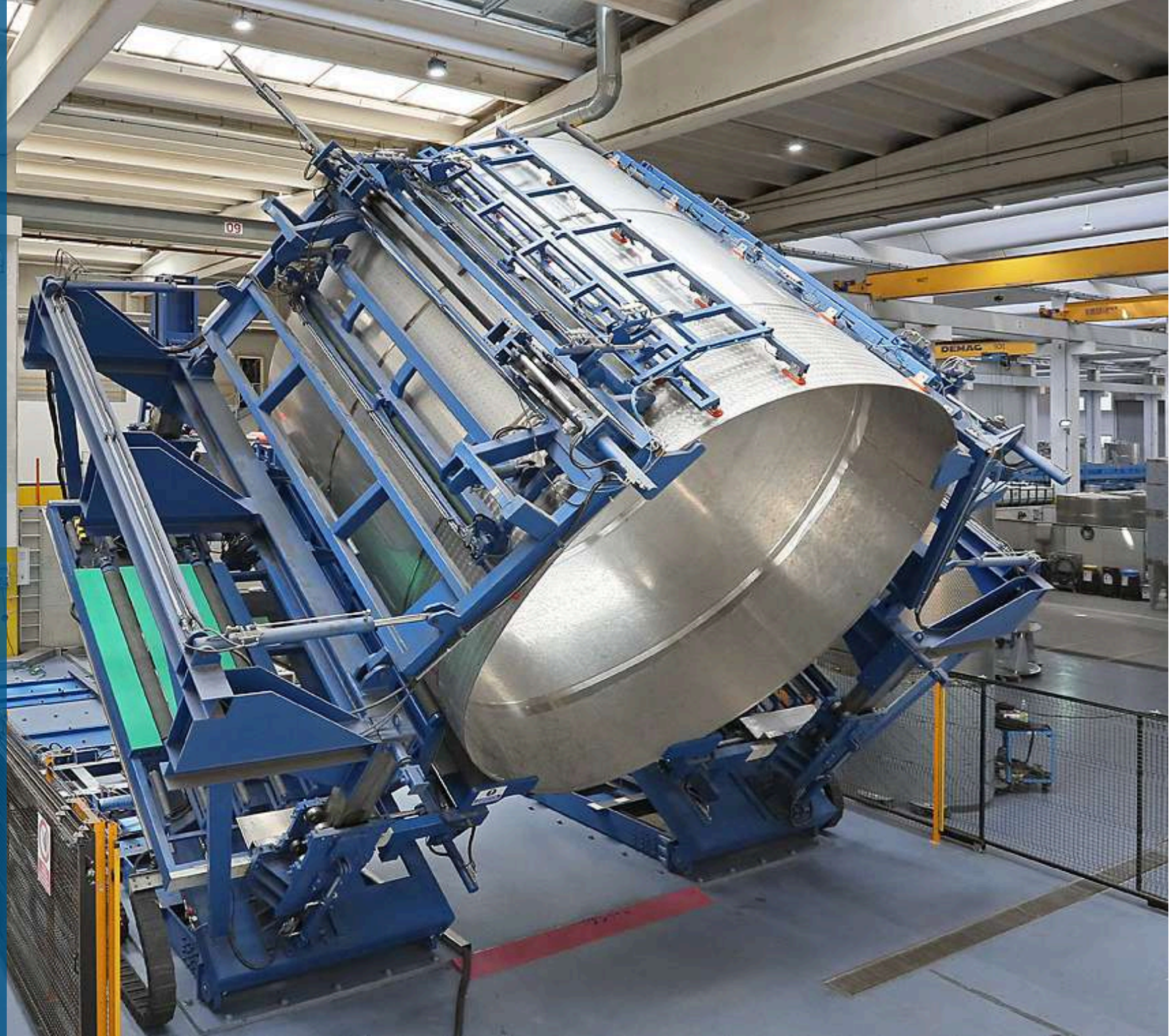
**STEP 3**

**STEP 4**

clear example  
**OF A  
CUSTOMIZED  
SOLUTION**

This machine has been developed and designed together with our customer and his experts.

We have developed a complete line to automatize a process that the customer was still handling mostly manually. A perfect piece of engineering.





**DELSY** (Digital ELectronic SYstem) was born in 1979 as a specialist manufacturer of industrial and civil digital electronics. In 1981 it starts the realization of projects that embrace different productive sectors.

In **2023** MG decided to make Delsy an integral part of the company, acquiring it with itself.

The specialization in the construction of CNC including dedicated software is consolidated, as well as the entire automation for hydraulic and electric machines.

Delsy is still the **leader** in the production of numerical controls in the sector.

The hardware, software and automation departments are always active to improve the components and applications necessary to **ensure excellence in production.**



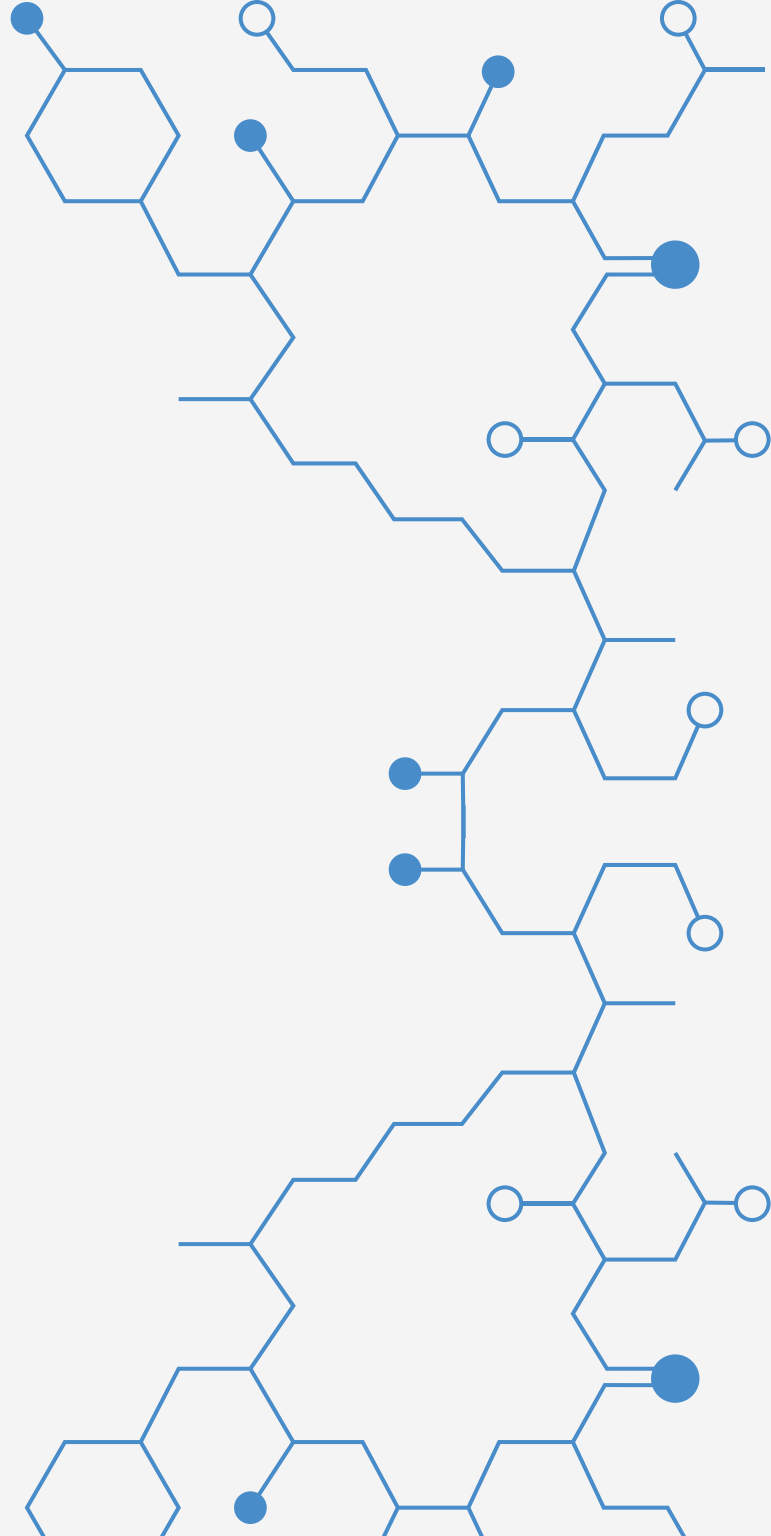
# THE TECHNOLOGY

**What we offer here in MG is a technology having 25+ years of research and development**

We satisfy any bending requirement and offer a wide range of models with useful length capacities from 300 mm to 12000 mm and thicknesses ranging from 1 mm to 300 mm capable of satisfying every need and solving any problem.

MG machines are designed and built to obtain performances equal to 3 times the diameter of their upper roll with plates having a yield strength of 260N/mm<sup>2</sup>.

The **"standard"** is not part of our philosophy: each machine is made and set up "tailored" according to the customer's needs, they are the result of constant research, use of cutting-edge components and solutions that make **our machines stronger and more and reliable.**



From 2023, in addition to Delsy, MG has decided to acquire **Roccia**, a company also belonging to the world of calenders and profile bending machines.

Thanks to this collaboration it has been and will be possible for us to increasingly expand our market in the world.





“

*In addition to the economic transaction there is more:  
a bond with the customer that creates real contact, with a sincere, honest and lasting relationship.  
For MG they are not just customers but people with desires and needs.*

**Massimo Roccia - President**



# OUR INVESTMENTS

€ 1.200.000

1959 - 2000

€ 3.000.000

2001 - 2010

€ 6.000.000

2011 - 2020

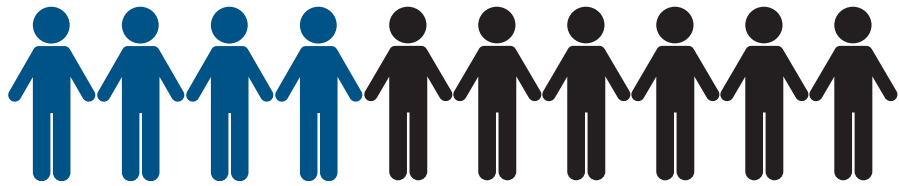
€ 8.000.000

from 2020





1959 - 2000  
20 EMPLOYEES



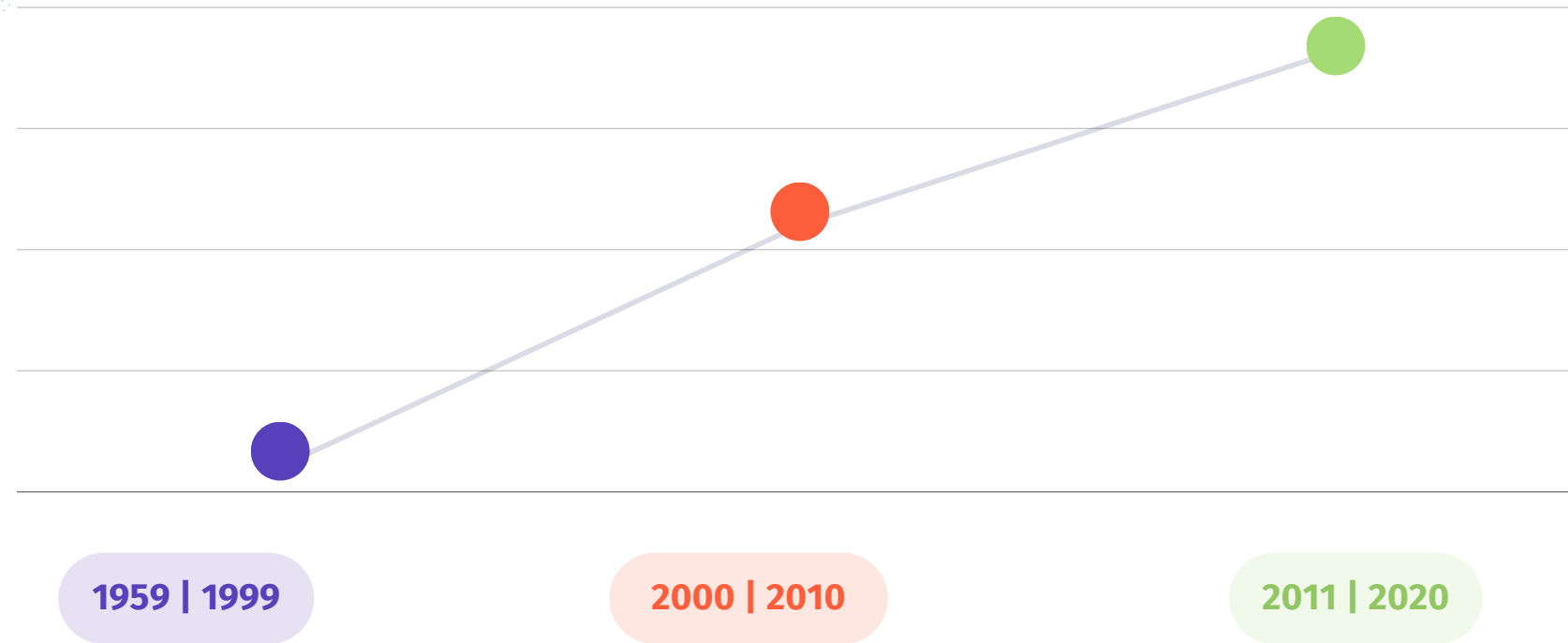
2001 - 2010  
46 EMPLOYEES



2010 - 2020  
98 EMPLOYEES



# THE GROWTH



IN 1959, WE WERE SELLING 2 MACHINES A MONTH  
TODAY WE SELL 35 MACHINES A MONTH



**98** EMPLOYEES



**21** SPECIALIZED TECHNICIANS



**32** MONTHLY PRODUCTION  
OF MACHINES

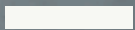


**10** PRODUCTION LINES



**208** DEALERS

# MG IN NUMBERS



# THE INDUSTRIAL



Flues



Heat exchangers



Boilers



Air Force



Metal structures



Autoclaves



Containers for the  
food industry



Automotive



Storage tanks



Pipelines



Wind towers



# THE AFTERSALES



**01**

Remote Support

**02**

On-site technical assistance

**03**

Full service maintenance contracts

**04**

Product upgrading and retrofitting

**05**

Customer staff training

# REMOTE SUPPORT

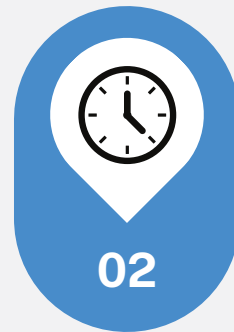
ALWAYS CONNECTED - Online service for our machines

As an option, all our control systems can be equipped with a special system to support the remote connection. **MG can basically connect to every single machine** or line (once the customer gives the related permissions and passcodes), in order to be able to check and assist during the troubleshooting operations.

This system is extremely sophisticated.



Request of assistance



Setting up the time slot



Connection to the machine

# CONTACT US

For any problem relating to a product purchased by us, you can contact us at the following contacts.

We will be ready to help you with any of your needs!



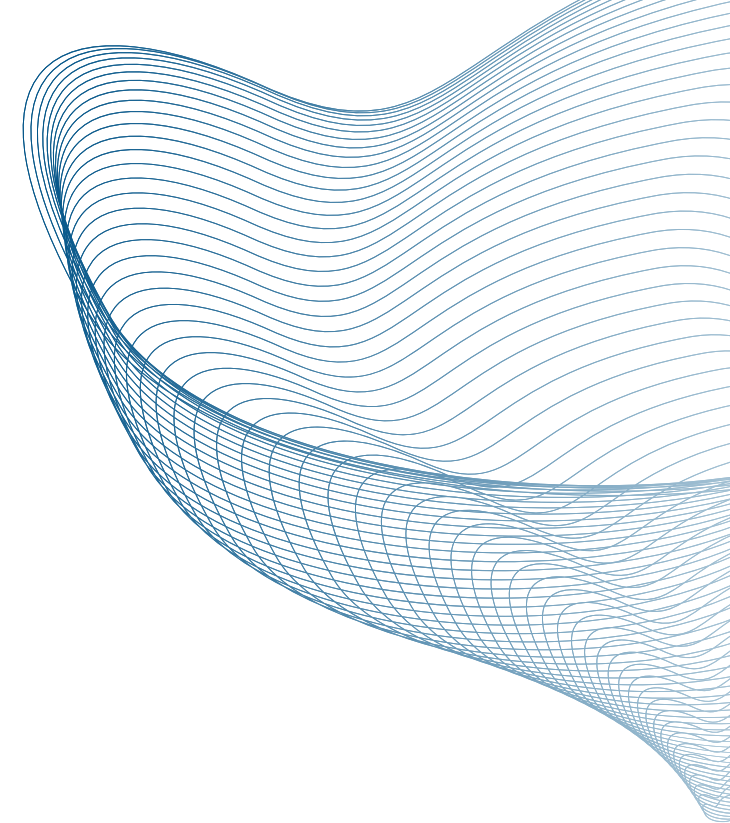
+39 0172 691327



+39 0543.441080



[info@mgsrl.com](mailto:info@mgsrl.com)



# SOCIAL CHANNELS



**Facebook**

mgsrl



**Instagram**

mgsrl59



**LinkedIn**

MG srl



**Youtube**

MG Plate Rolls



[mgsrl.com](http://mgsrl.com)





**OUR PRODUCTS**  
*contact us*

