

# FIRST CLASS MACHINE TOOLS

HORIZONTAL BORING  
& MILLING MACHINES

UNIVERSAL CENTRE  
LATHES

PORTAL MILLING  
MACHINES

VERTICAL TURNING  
LATHES

ACCESSORIES  
(TABLES, HEADS)

MODERNIZATION

SERVICE

# SMT

SMART CHOICE, SINCE 1911

## FIELDS OF APPLICATION



POWER GENERATION



SHIPBUILDING



OIL & GAS



TRANSPORTATION



EARTH MOVING



GENERAL MACHINING



DEFENSE



# FC SERIES

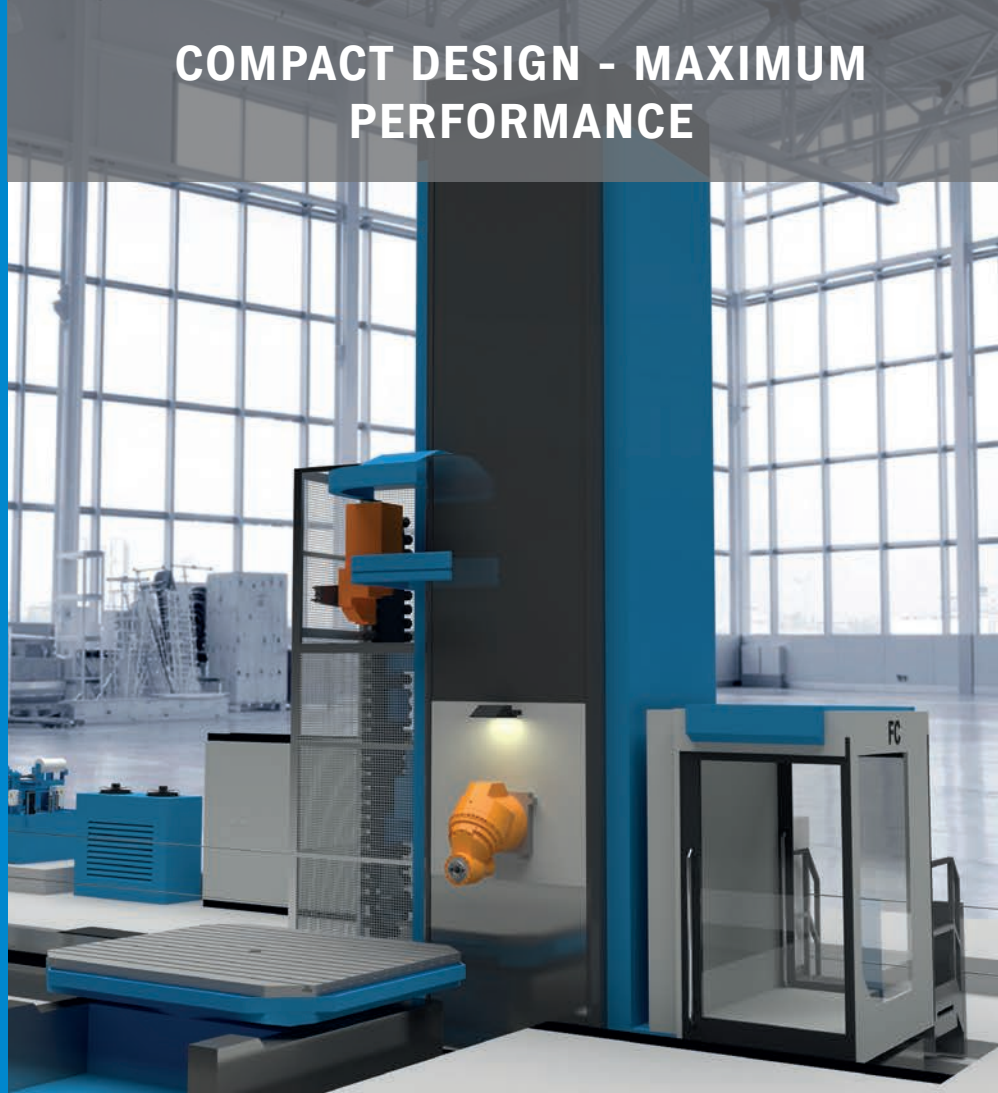
MAXIMUM PARAMETERS:

MAIN MOTOR POWER  
**43kW**

SPINDLE SPEED  
**6000 rpm**

TORQUE  
**920 Nm**

RAM SIZE  
**480 X 550 mm**



COMPACT DESIGN - MAXIMUM  
PERFORMANCE

FULLY CASTED AND FAST MOVING



# FCW SERIES

MAIN MOTOR POWER  
**81 kW**

SPINDLE SPEED  
**3 500 rpm**

TORQUE  
**3 000 Nm**

RAM + SPINDLE EXTENSION  
Z+W  
**2 500 mm**

# HCW 2000-4000 SERIES

MAXIMUM PARAMETERS:

MAIN MOTOR POWER  
**160 kW**

SPINDLE SPEED  
**3 500 rpm**

TORQUE  
**16 000 Nm**

RAM + SPINDLE EXTENSION  
Z+W  
**4 100 mm**

HIGH REVOLUTION  
FULLY HYDROSTATIC MACHINE



# HCW 1-4 SERIES

MAXIMUM PARAMETERS:

MAIN MOTOR POWER  
**147 kW**

SPINDLE SPEED  
**3 500 rpm**

TORQUE  
**36 000 Nm**

RAM + SPINDLE EXTENSION  
Z+W  
**3 800 mm**



# SR 1-5 SERIES

MAXIMUM PARAMETERS:

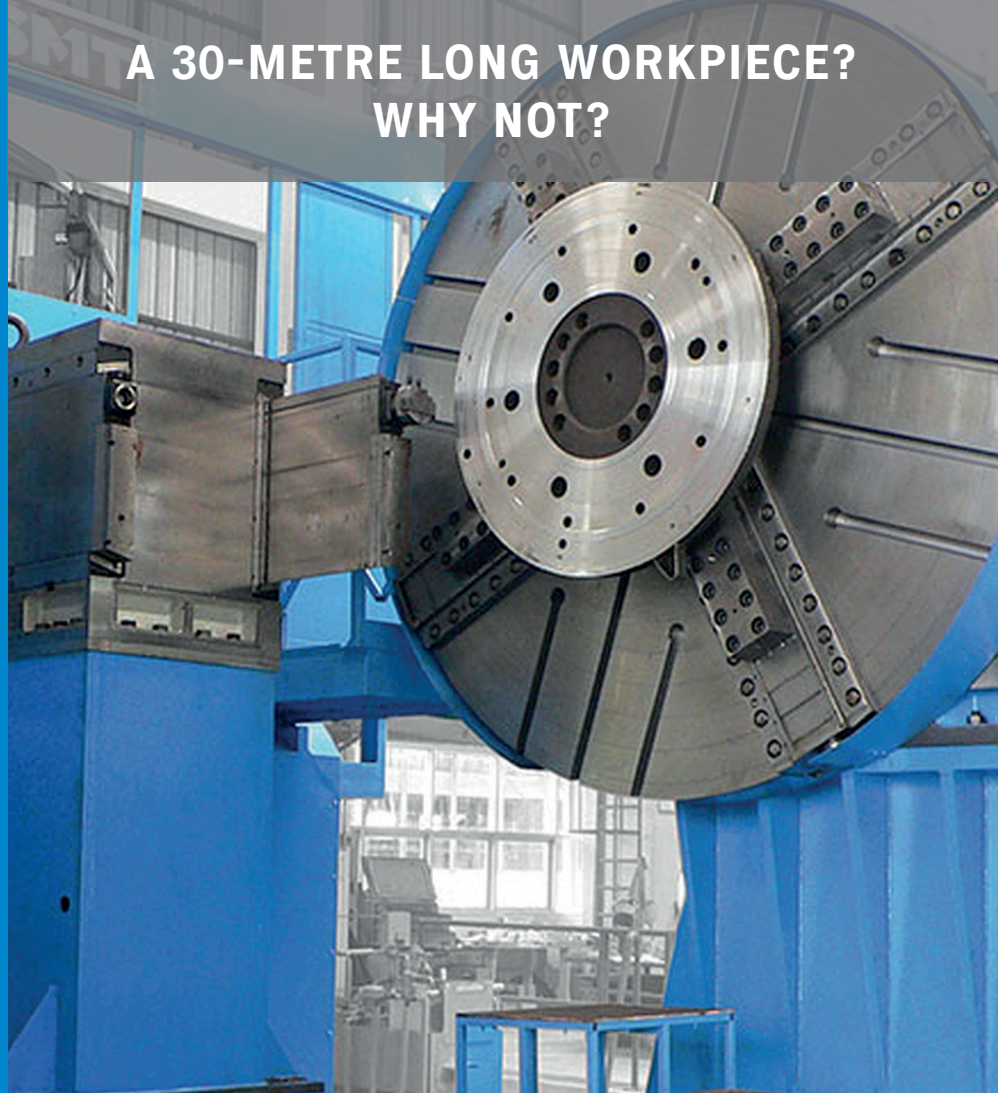
SWING OVER BED  
**6 000 mm**

DISTANCE BETWEEN CENTRES  
**30 000 mm**

WORKPIECE WEIGHT  
**350 t**

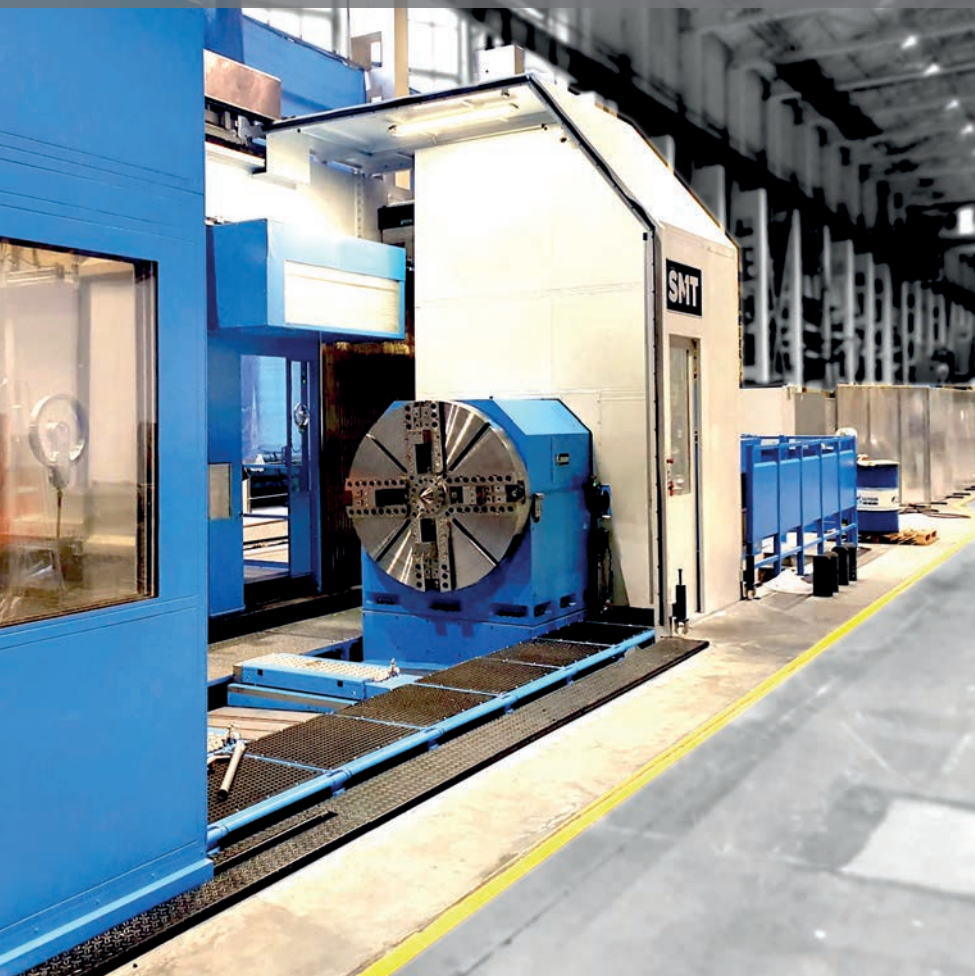
POWER  
**335 kW**

SPEED  
**700 rpm**



A 30-METRE LONG WORKPIECE?  
WHY NOT?

COMPLETE MACHINING  
IN ONE SETUP



# S-MT SERIES

MAXIMUM PARAMETERS:

WORKPIECE WEIGHT  
**250 t**

DIAMETER  
**5 000 mm**

DISTANCE BETWEEN CENTRES  
**15 000 mm**

ROTATION/MILLING SPEED  
**700/3 500 rpm**

# WP SERIES

MAXIMUM PARAMETERS:

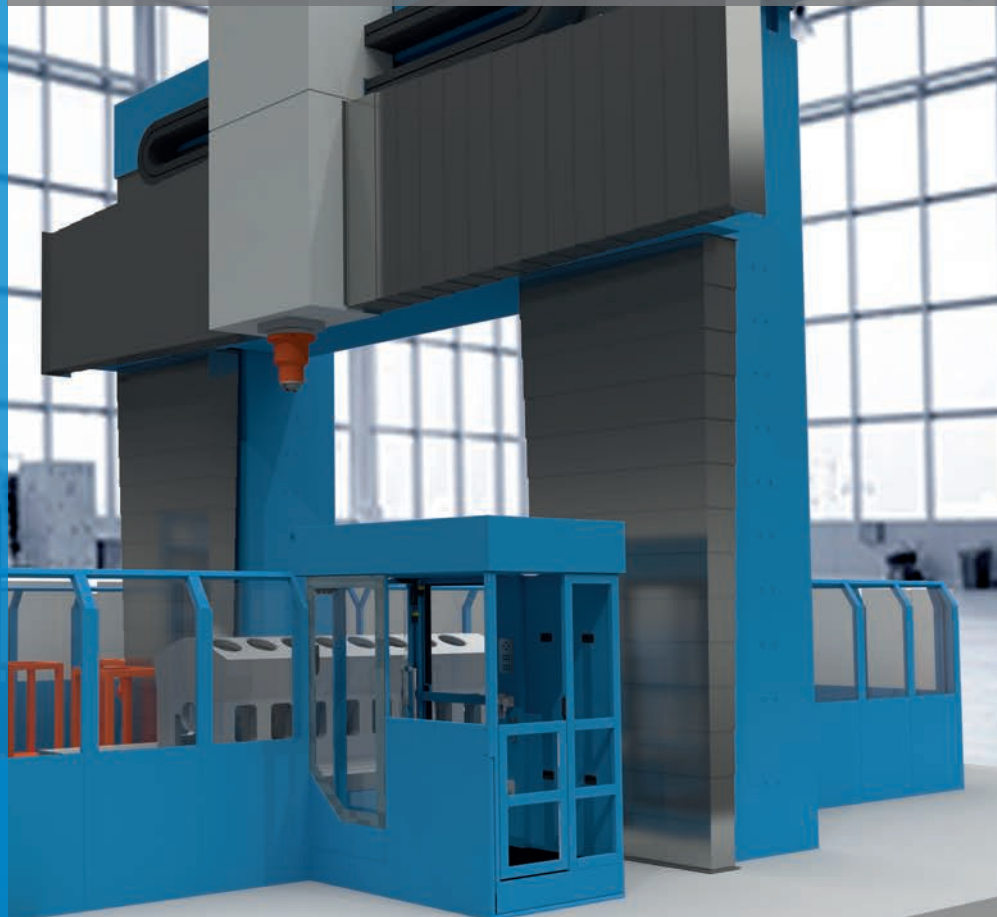
CLEARANCE BETWEEN  
COLUMNS  
**4 000 – 10 000 mm**

POWER  
**110 kW**

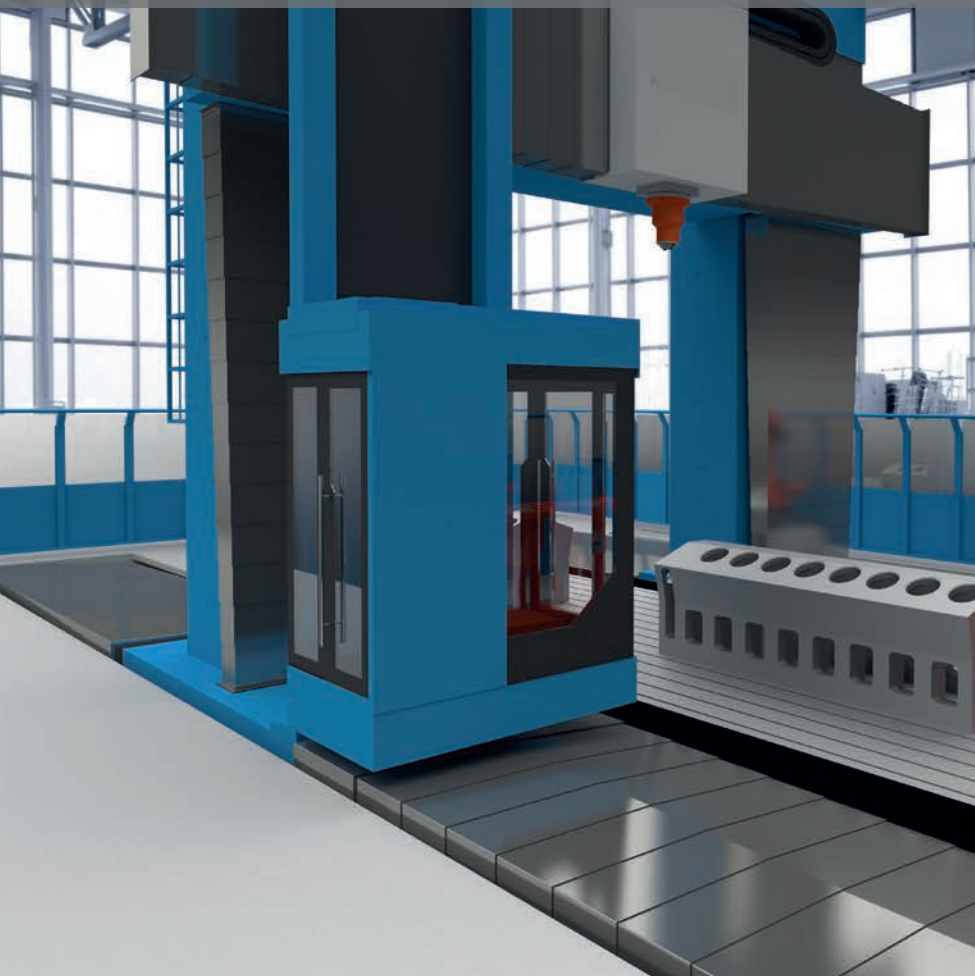
SPINDLE SPEED  
**4 000 rpm**

TORQUE  
**8 400 Nm**

# PORTAL MILLING MACHINE TABLE TYPE



# PORTAL MILLING MACHINE GANTRY TYPE



# WPA SERIES

MAXIMUM PARAMETERS:

CLEARANCE BETWEEN  
COLUMNS  
**4 000 – 10 000 mm**

POWER  
**110 kW**

SPINDLE SPEED  
**4 000 rpm**

TORQUE  
**8 400 Nm**



# SV/SVA SERIES

## VERTICAL TURNING LATHE

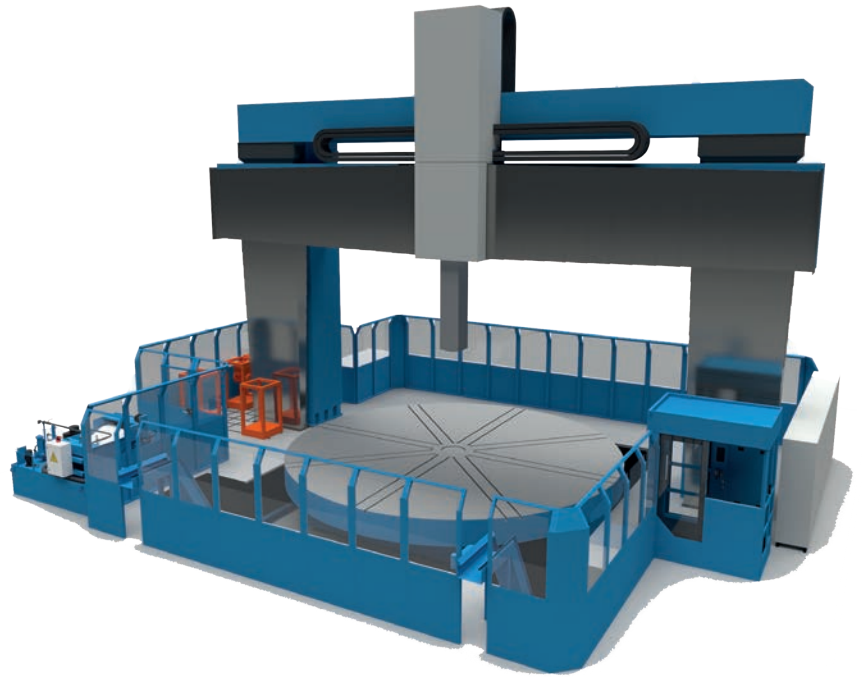
MAXIMUM PARAMETERS:

DIAMETER OF WORKPIECE  
**10 000 mm**

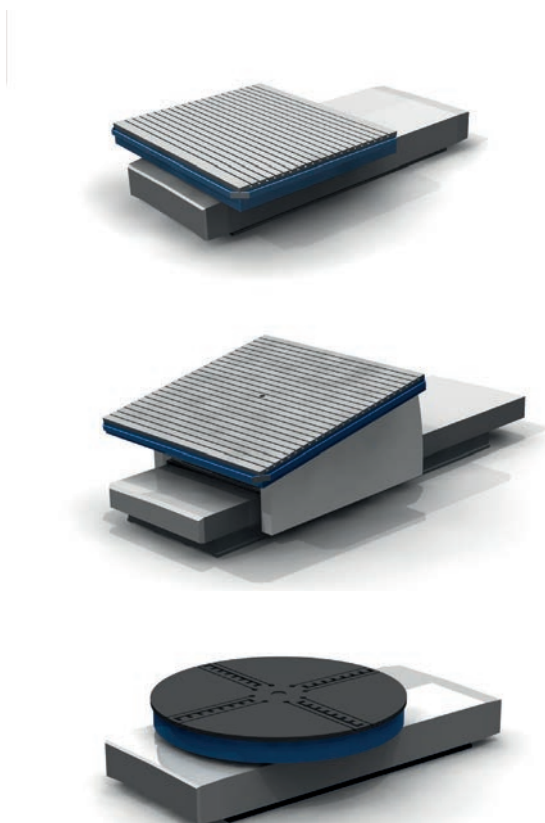
DIAMETER OF CLAMPING  
PLATE  
**8 000 mm**

WORKPIECE WEIGHT  
**320 t**

HEIGHT OF WORKPIECE  
**6 000 mm**



## EXCEPTIONAL DURABILITY



## TABLES

**ROTARY & TRAVERSABLE  
TILTING TABLES  
CAROUSEL TABLES**

MAXIMUM PARAMETERS:

LOADING CAPACITY  
**400 t**

TABLE PLATE  
**6 000 × 8 000 mm**

TRAVEL V  
**8 000 mm**

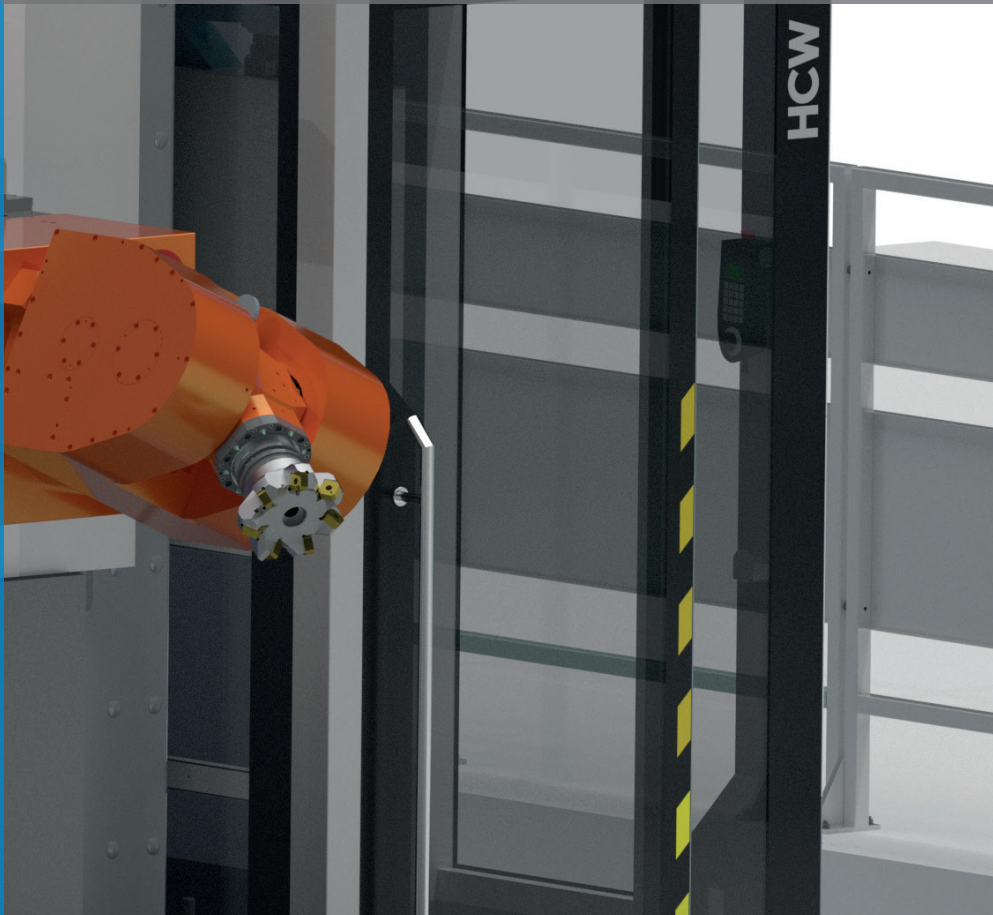
# BORING & MILLING HEADS

EXTEND YOUR MACHINE OPTIONS

MORE THAN 30 TYPES  
OF MILLING AND BORING  
HEADS

AUTOMATIC HEAD CHANGER  
SYSTEM

PALETTE HEAD  
CHANGE SYSTEM



MANUAL 1-AXIS HEAD  
IFVW 2C,4C



MANUAL 2-AXIS HEAD  
IFVW 3C



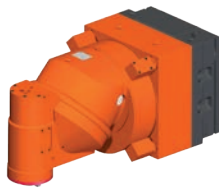
EXTENSION MILLING HEAD  
IFVW40



SMALL RIGHT ANGLE HEAD  
IFVW 112,113



RIGHT ANGLE HEAD  
IFVW 101,102,103,104



UNIVERSAL 45-DEGREE HEAD  
IFVW 203



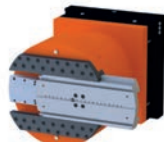
UNIVERSAL 90-DEGREE HEAD  
IFVW 206,207,208



CNC UNIVERSAL HEAD  
UFK 600, 1000, 2000, 2400



STANDARD FACING HEAD  
IWD 125, 200, 320,  
500, 700



NC FACING HEAD  
IVW 320 NC, 500NC, 630NC, 800  
NC, 1000NC



LARGE SIZE FACING HEAD  
IWD 1100, 2000



MICRO INDEX 1-AXIS HEAD  
IFVW 110 MI



MICRO INDEX 2-AXIS HEAD  
IFVW 203 MI, 210 MI

# CHANGE OF TOOLS

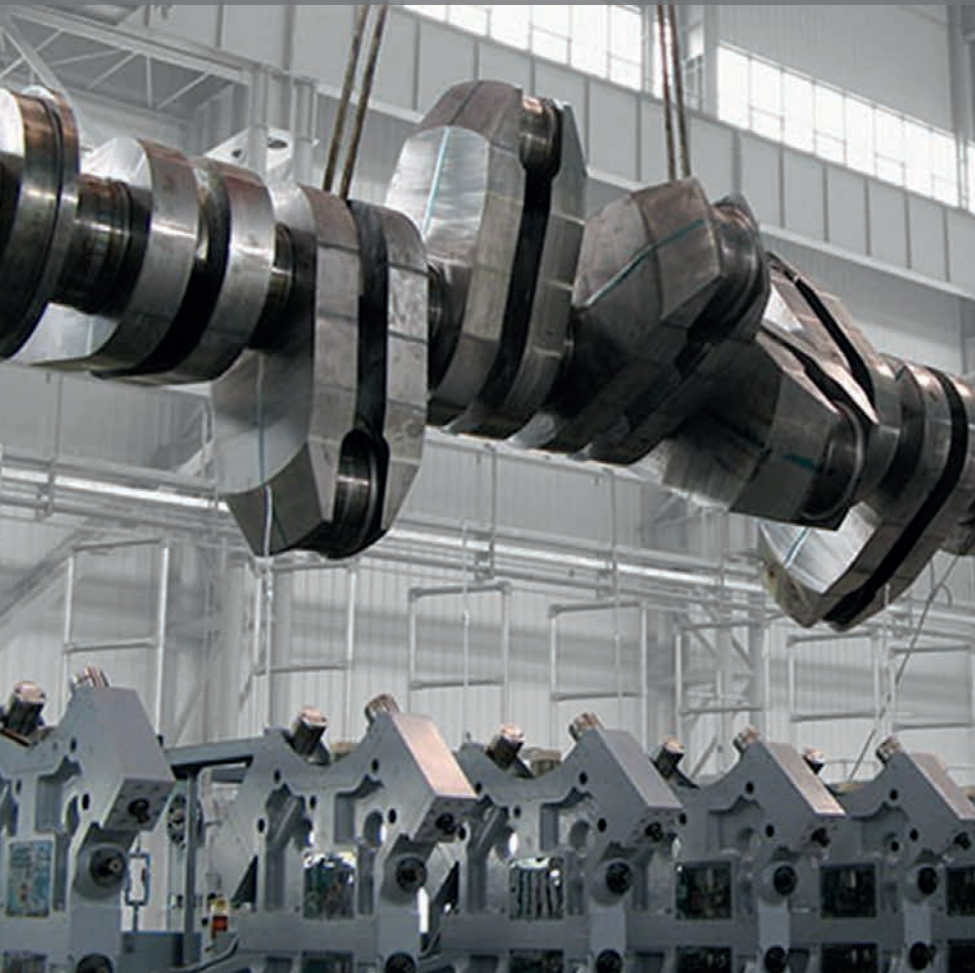
ROBOTIC TOOL CHANGERS

AUTOMATIC TOOL CHANGERS

CAN I HELP YOU? I'M YOUR ROBOT...



WITH YOUR MACHINE  
BEYOND THE LIMITS



## SPECIAL ACCESSORIES

WORKSTATION FOR MACHINING OF GENERATOR AND TURBINE ROTORS

WORKSTATION OF LATHES FOR MACHINING OF CRANKSHAFTS

DEEP HOLE BORING

# TURN-KEY SUPPLY

COLISION  
SIMULATIONS

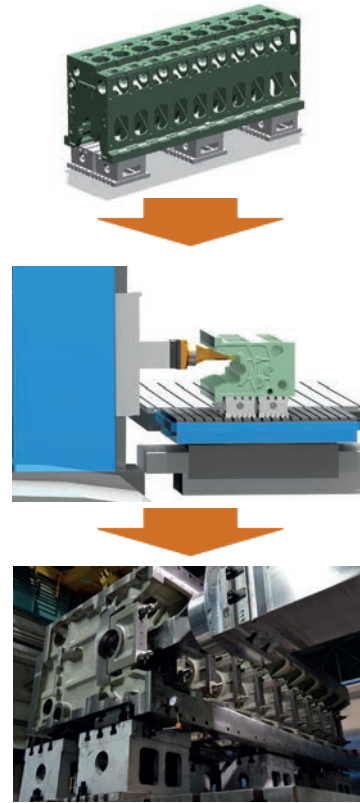
CASE AND TIME  
STUDIES

3D SIMULATIONS

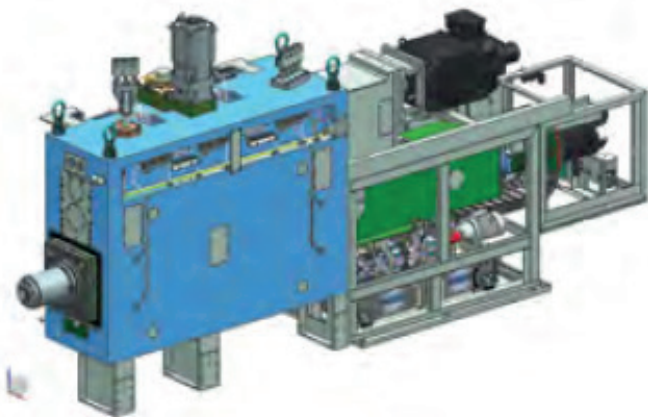
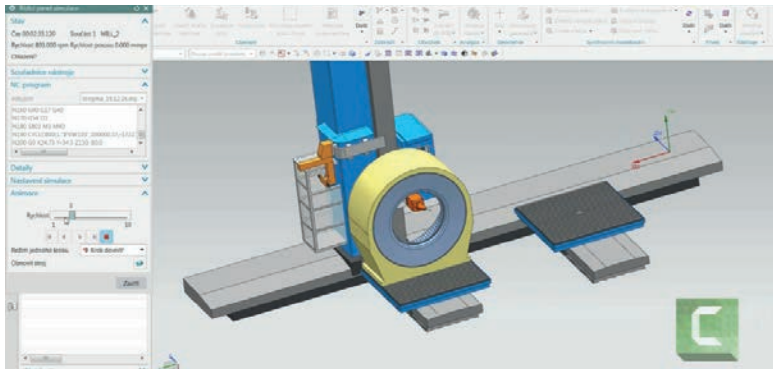
POST PROCESORS



## GIVE US A WORKPIECE, GET THE TECHNOLOGY



## ENGINEERING & APPLICATION TECHNOLOGIES



## INDUSTRY 4.0



### TEAMCENTER



# SERVICE

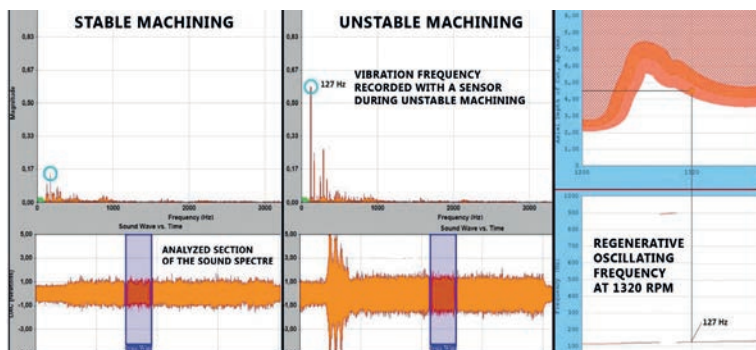
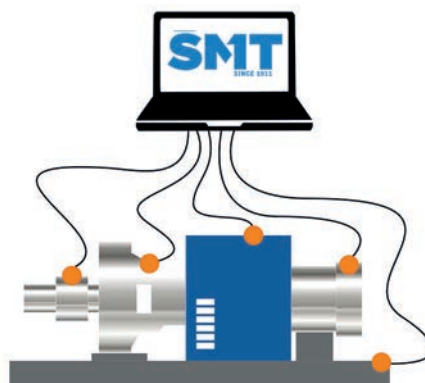


service@cz-smt.cz  
hot-mail@cz-smt.cz









+420 736 755 183  
+420 735 799 799



# HVD HEADSTOCK VIBRATION DIAGNOSTIC



# ŠMT MONITORING SYSTEM

-  **HMS**  
Headstock Monitoring Sensors
-  **RTC**  
Ram Thermal Compensation
-  **AMS**  
Attachment Monitoring Sensors
-  **MMD**  
Machine Maintenance Diagnostics
-  **AGC**  
Attachment Geometry Calibration
-  **TCC**  
Table Control Calibration
-  **SME**  
SMT Machine Efficiency
-  **TEL**  
Table Excentric Load

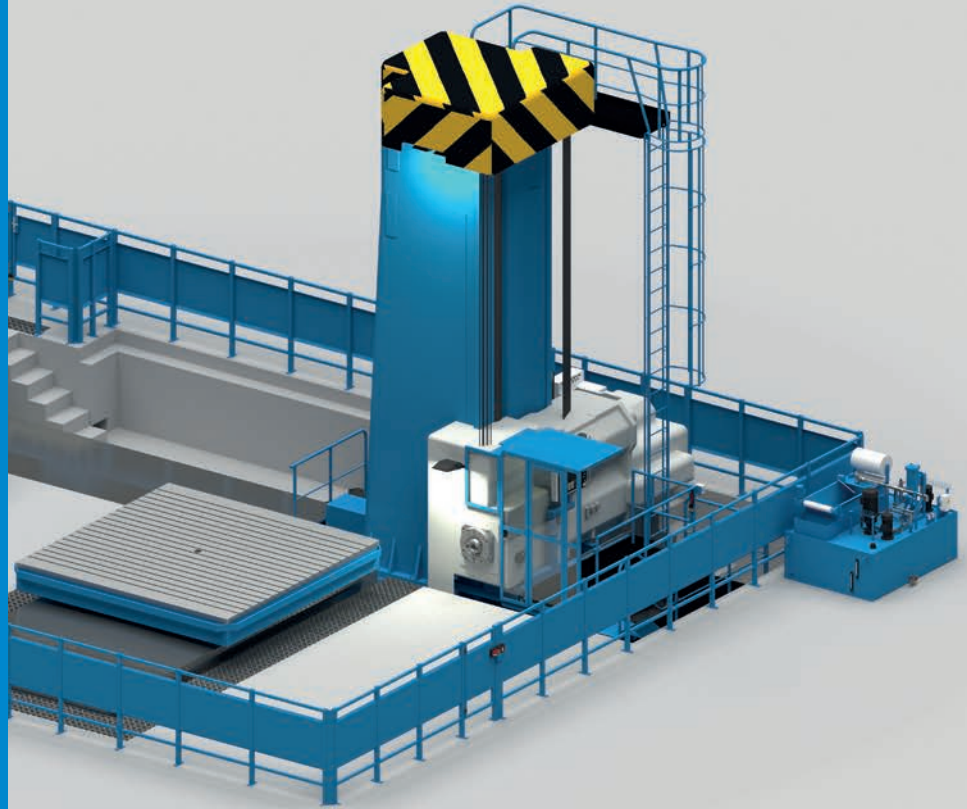
# MODERNISATION AND OVERHAULING

MORE EFFICIENCY,  
BETTER MACHINE,  
LOWER COSTS...

GET UP TO 40%  
MORE FROM YOUR  
SMT MACHINE



WE KNOW EVERYTHING ABOUT  
(Y)OUR MACHINE.



CHOOSE THE RIGHT LEVEL  
OF UPGRADE!

PRODUCTIVITY INCREASE

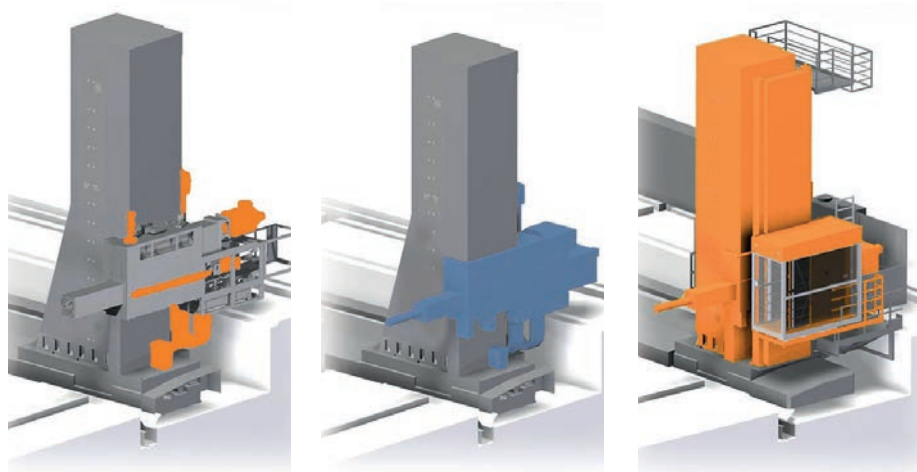
MINIMISING DOWNTIME

UNIQUE KNOW-HOW

NO FOUNDATION

BUYBACK OPTION

BETTER ACCURACY



# SMT

Your partner for first-class machine tools.  
We are your connection to precision, innovation and performance  
in the world of High-End machine tool since 1911.



**New  
Machines**



**Modernization,  
overhauling**



**Service,  
spare parts**



**Consulting,  
training**

## Get in Touch for Expert Machine Tool Solutions Today!

- Horizontal boring and milling machines
- Universal centre lathes
- Vertical lathes
- Portal milling machines
- Special purpose machine
- Tables - rotary, tilting, carousel
- Boring and milling heads
- R&D dept.
- Modernization, overhauling
- Training, consultation
- Monitoring system, remote control

## OUR BENEFITS

- More than :
  - 110 years of innovation, High-End technical solution
  - 4000 heavy duty machines sold worldwide
- Accuracy in thousandths of a millimeter
- Precision machine tools enabling the machining of the heaviest, most complex and precision-demanding parts
- Long lifecycle with minimum cost of maintenance
- Digitization, virtual twins of machine for simulation of machining, remote service, cloud-based documentation solutions

